



## Riley Area Construction: October 29 Update

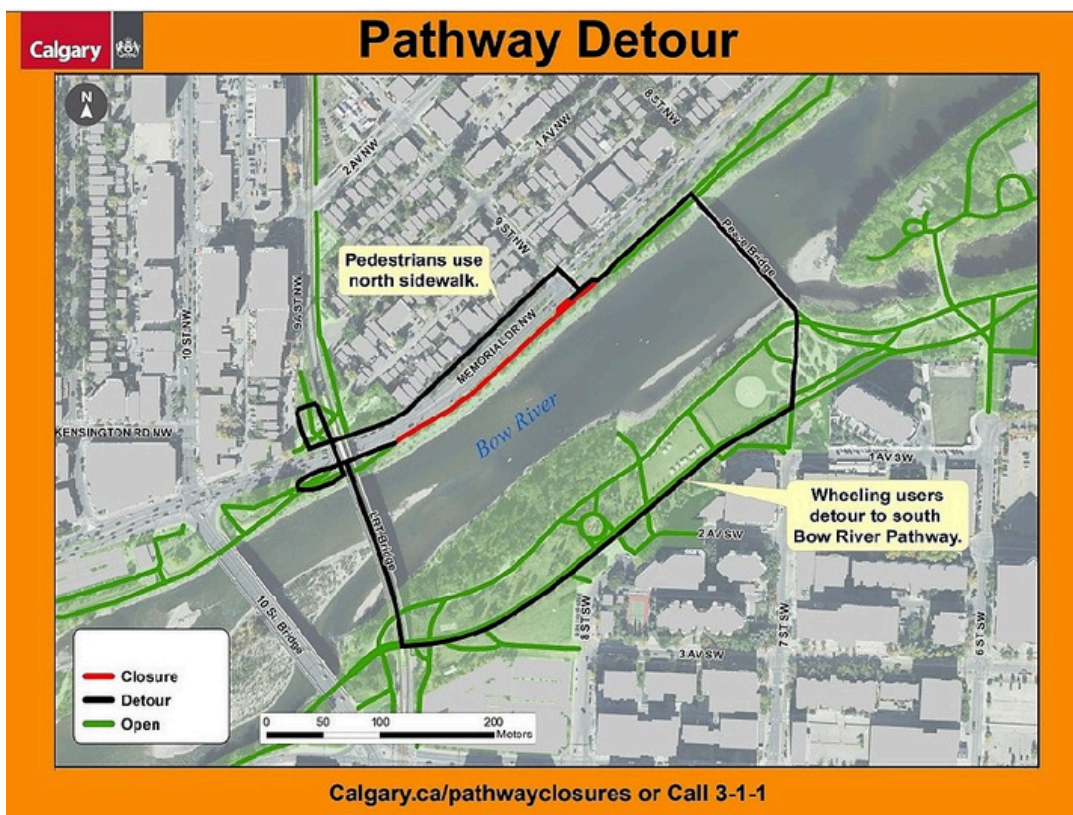
### Upcoming Closure Information

#### **Sunnyside Flood Barrier:**

#### **Pathway Closure: Bow River Pathway near 9 St and 9A St N.W.**

Starting October 30 and continuing into mid-November the northside of the Bow River Pathway will be closed near 9 St N.W. to 9A St N.W. (see map below)

Pedestrians to use north sidewalk and wheeling users detour to south Bow River Pathway.



## Upcoming Road Closures:

Right lane of Eastbound Memorial Dr N.W. between 8 St to 9A St N.W. will be closed daily from 9 a.m. to 3 p.m. starting on October 31 and continuing into mid-November

Two lanes of Westbound Memorial Dr N.W. will be closed from Centre St to 4A St N.W. for two weeks in mid-November.

## 3 Avenue N.W. Public Realm Improvements

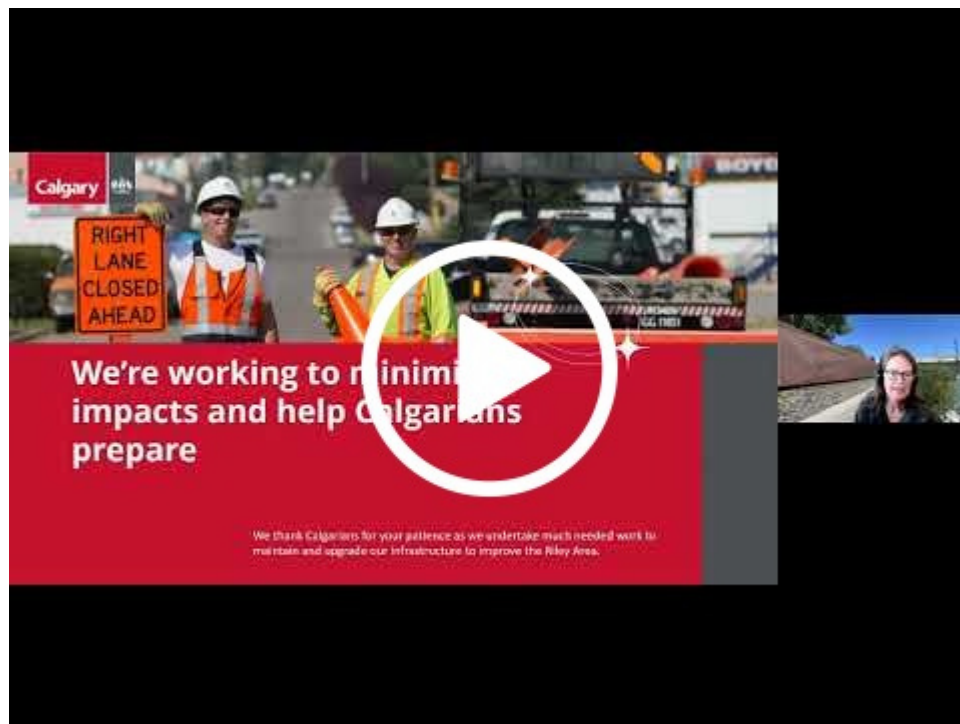
### Road Closure: 3 Avenue between 9A St and 10 St N.W.

From 7 a.m. to 9 p.m. on November 4, 3 Avenue N.W. will be fully closed between 9A St N.W. and 10 St N.W. Local business and residential access will be maintained. Pedestrians and vehicles to follow detour signage in the area.

This work will follow the third-party utility work that is occurring in the same area on November 2 and November 3.

## Fall 2024 Update: Recording Available

On October 16, project teams provided an update to the community answering questions and updating on the progress of work. If you were not able to join us, watch a recording of this live event below.



---

## Project Webpage and Additional Information

For more information, please go to [Calgary.ca/RileyConstruction](https://Calgary.ca/RileyConstruction)

Email us at [RileyAreaProjects@Calgary.ca](mailto:RileyAreaProjects@Calgary.ca)