



Who works at CPS

33.9% Female
63.4% Male
2.7% Transgender/Genderqueer/Intersex



Sworn
19.3% F
80.6% M



Civilian
65.6% F
34.4% M

35 - 44
Average age



7% identified with **a disability**

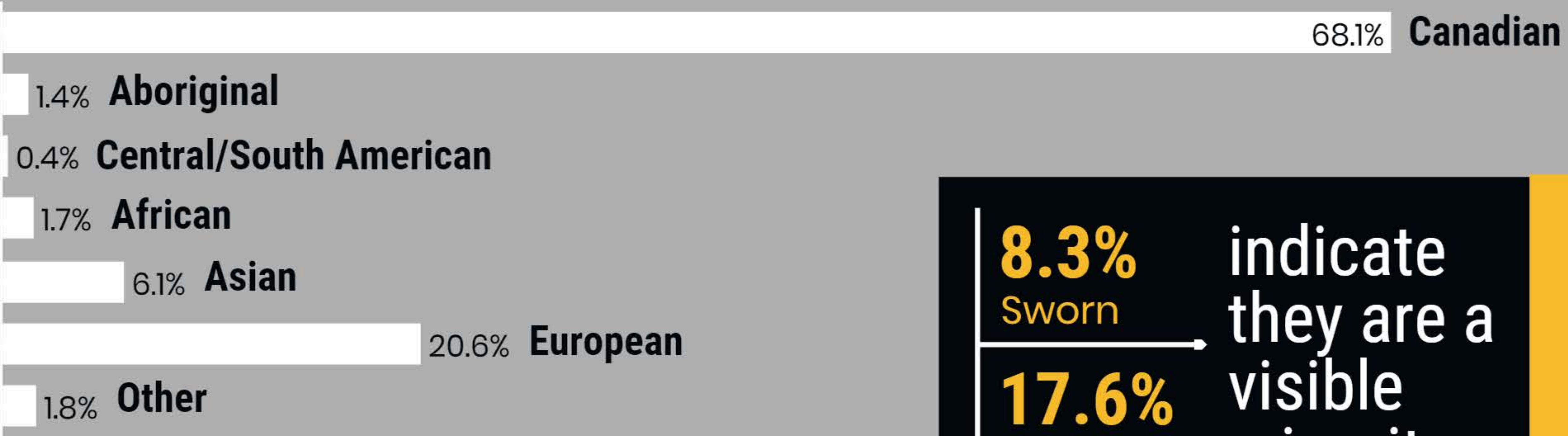
May include physical, mental, sensory, psychiatric and/or learning impairment

11.7
Average years of service

4.2% identified as LGBTQ+ community members



Where we are from



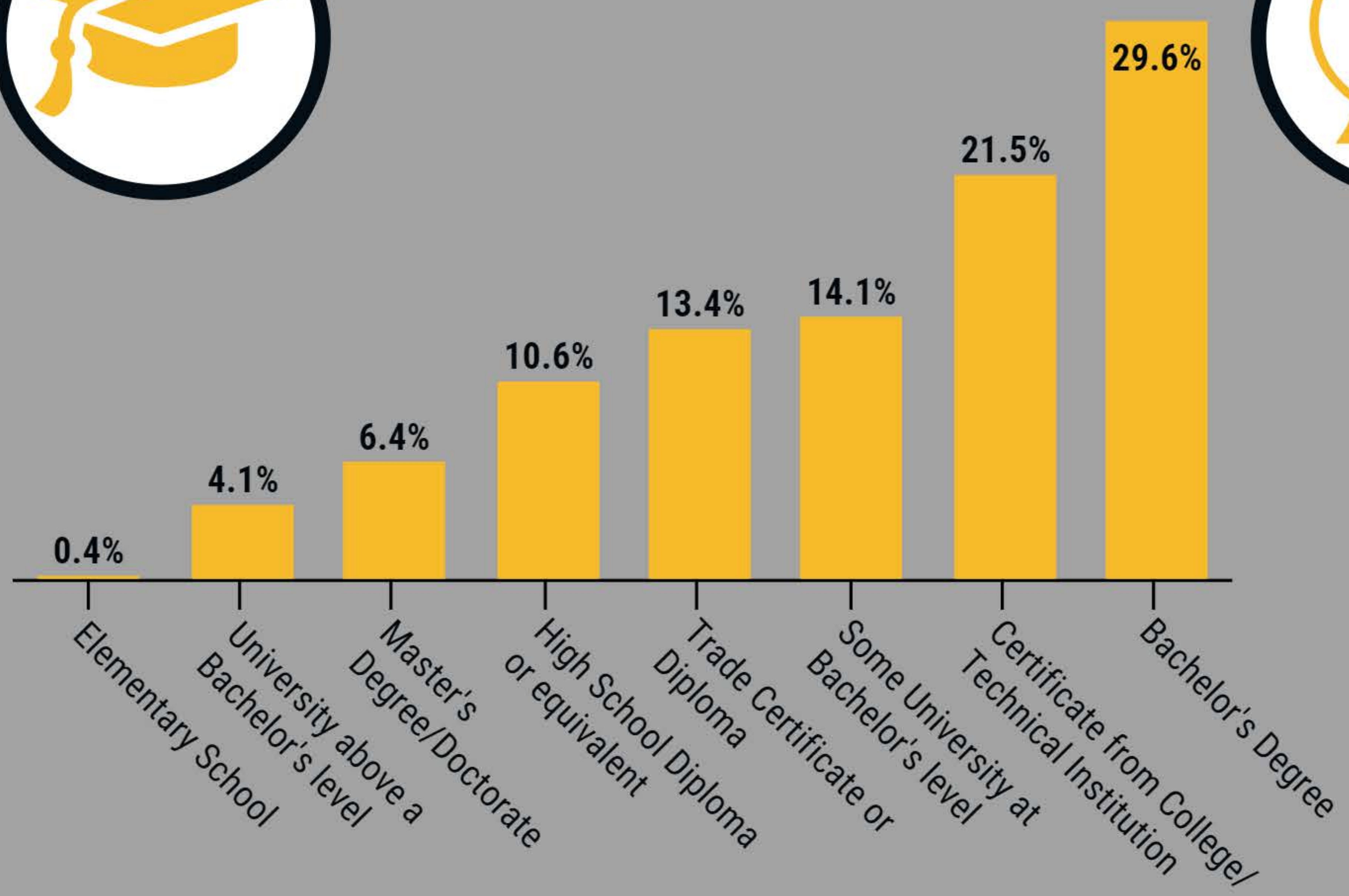
11.4%
of respondents identify as a **visible minority**

8.3% Sworn indicate they are a visible minority
17.6% Civilians

SUPERVISORS
6.7% visible minorities | **12.6%** non-visible minorities



Education we have



Languages we speak

Aboriginal	English & French
0.2%	8.6%
African	European
0.3%	4.3%
Asiatic	Indo-Iranian
4.2%	1.8%
English only	Languages related to physical disabilities
79.9%	0.1%



Our families

12.3% **married to someone** at CPS

11.3% **related to someone** at CPS

Married

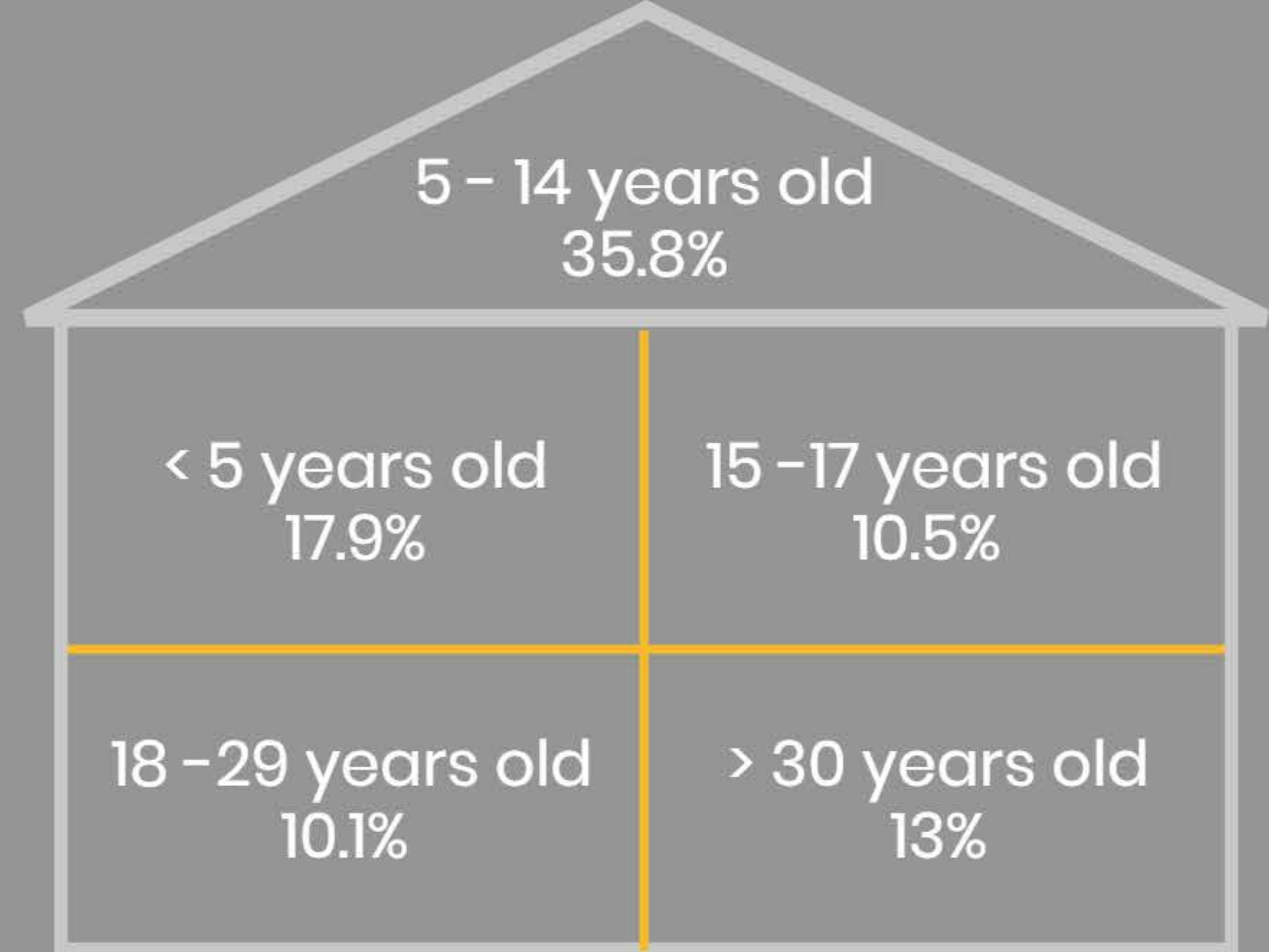


65%

care for dependents

including children, family members, pets friends & neighbours

Percentage of respondents with dependents aged:



54% of all respondents care for children

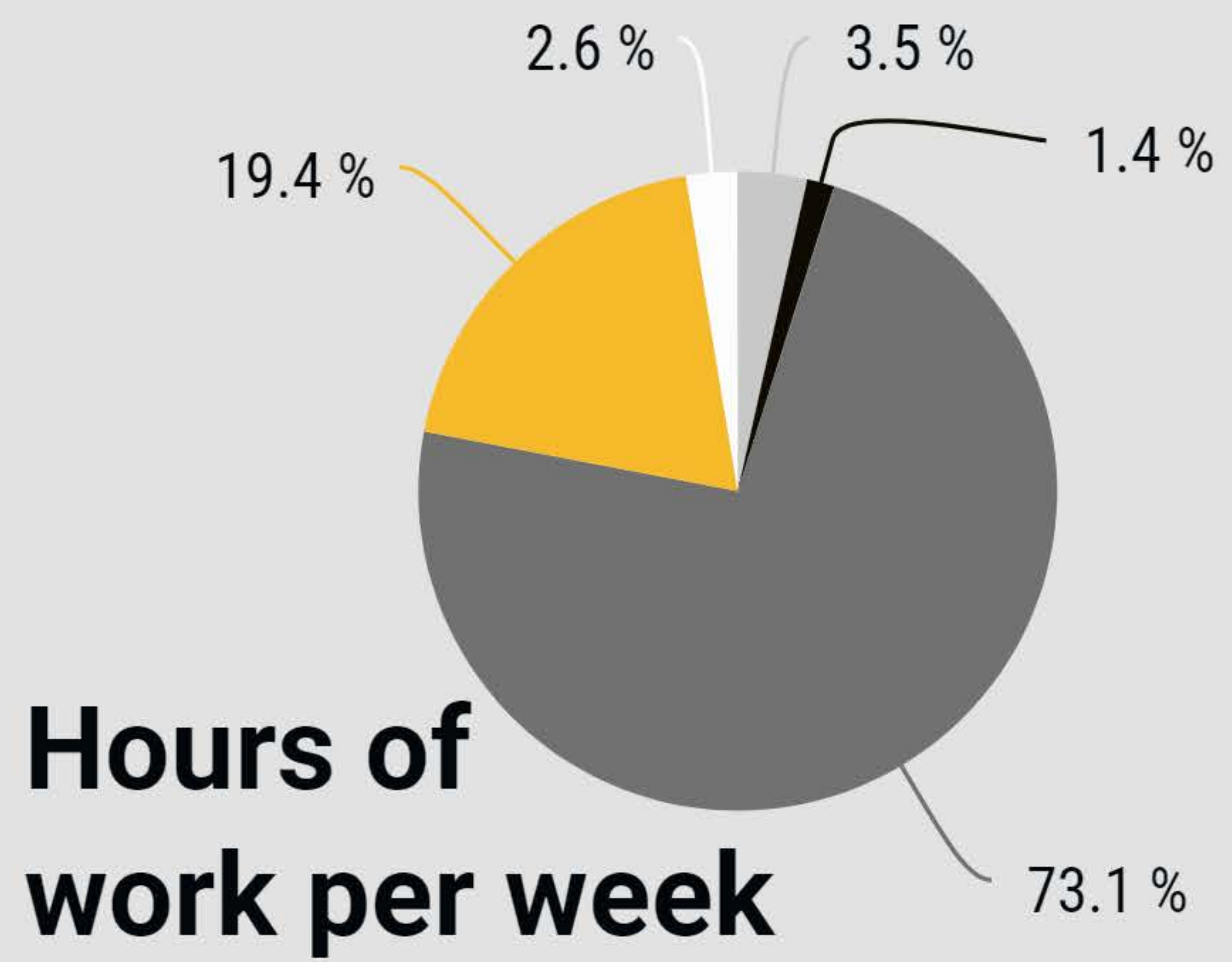


Time to work & at work

Average **30 MINUTES ONE WAY**

96% use a vehicle

6% USE multiple modes of transportation

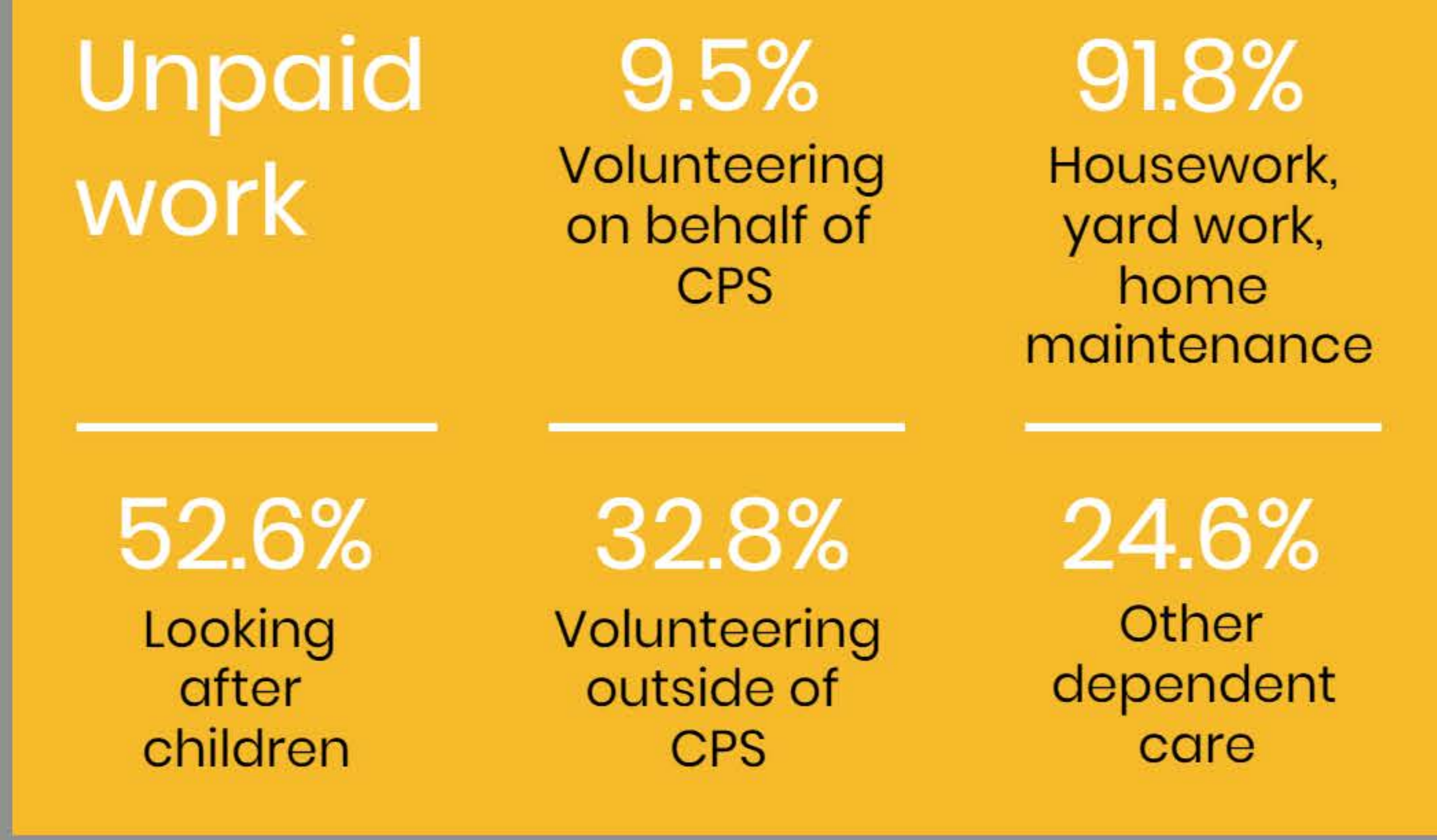
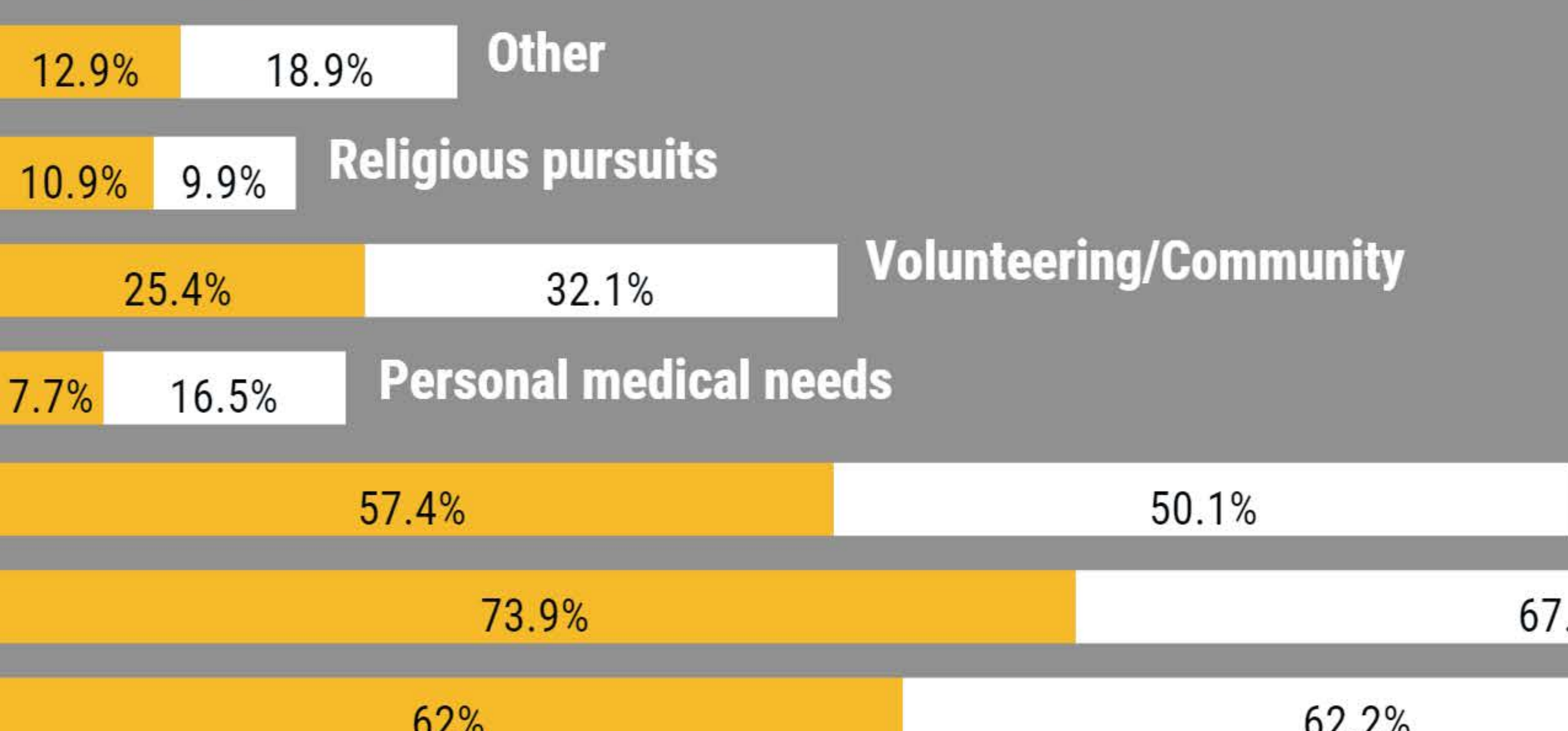


48% work 1-14 hrs OT/week

Hours of work per week



What we do outside of work



● Men ● Women