

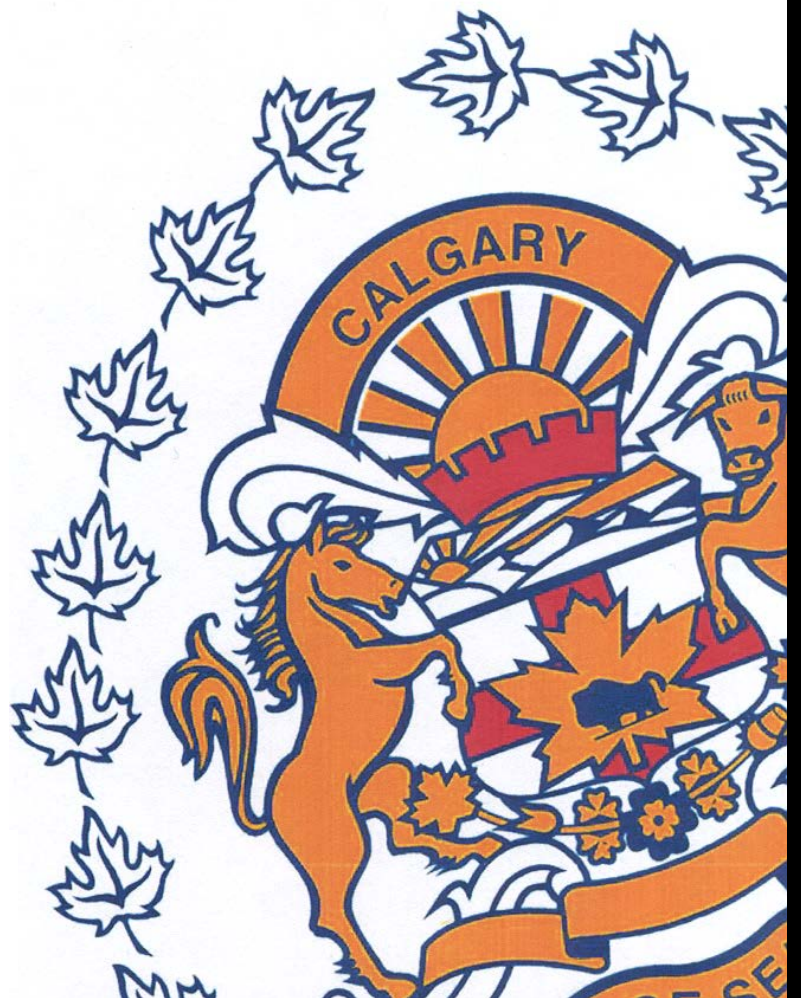
AUGUST

Monthly Statistical

REPORT

2015

Compiled by: Centralized Analysis Unit
Crime and Intelligence Analytical Section
Strategic Services Division
© Calgary Police Service 2015



The Calgary Police Service provides this information in good faith but it provides no warranty, nor accepts any liability arising from any incorrect, incomplete or misleading information.

TABLE OF CONTENTS

	<i>Page</i>
Monthly Highlights - STATIC NUMBER COMPARISON	1
Calgary Crime Statistics – STATIC NUMBERS	
Person Crimes	2
Property Crimes	3
Other Criminal Code/Selected Other/Drug Offences	4
Calgary Traffic Collisions – CUMULATIVE NUMBERS	5
Calgary Crime Statistics - CUMULATIVE NUMBERS	6

REPORT NOTES

Most of the statistical data in this report are derived from the Police Information Management System (PIMS) and compiled by the Centralized Analysis Unit. The numbers reported may change on a daily basis due to the dynamic nature of offences being reported and cleared. Disorder data is derived from the CAD system and is static.

To a large extent, the data in this report are based on accumulated to date information. ***(Except for the Monthly Highlights which are based on static information (i.e.: a snap-shot in time).***

- For offences based on accumulated to date information, the number of offences recorded may be higher than previously reported (i.e. in previous statistical reports) due to late reporting. Although this does not greatly affect the number of occurrences for all offences, for some categories it may be as high as a 30-40% increase. The published data for the current period can therefore be expected to increase as time passes. As a result, readers should exercise caution when making comparisons between historical data and current data (i.e. previous year to this year) as data for the historic period will now include late reported offences, but data for the current period will not at this time. To achieve an effective comparison, current data should be evaluated against the originally published data for the historic period.
- Likewise, late reporting affects the number and percentage of offences cleared. Cases are often cleared months and sometimes years later. Consequently, clearances for previous years may appear to be much higher than those of the present year. Cases “cleared by charge” and those “cleared otherwise” are included in these totals.
- For offences based on “static” or “snap-shot” information, data totals will only reflect the number of offences reported in the original publication. They are not updated. Although late reporting may occur, and offences may continue to be cleared as time passes, these new events are not taken into account when preparing this statistical report.

A single incident may result in multiple offences, with each unique *Criminal Code* violation within the incident being counted as an offence. Furthermore, person crime offences are typically counted by the number of victims. Please note that offences are assigned to the month in which the offence "started", not the month they were reported or cleared. Also note that “attempted” incidents are included in these totals. For a more detailed explanation of the Offence counting procedure, please contact the Centralized Analysis Unit.

Monthly Highlights – STATIC NUMBER COMPARISON

To reduce the impact of late reporting, comments on this page are a comparison between the CPS August 2015 Statistical Report and the CPS August 2014 Statistical Report. To achieve an effective comparison, current data should be evaluated against the originally published data for the historic period.

AUGUST 2015

PERSON CRIME

- ◆ Reported **person crimes** for the month of August 2015 increased 7.0% when compared to August 2014 (796 offences in August 2015 vs. 744 in August 2014). This increase is almost identical when compared to the five year average (8.2%).
- ◆ Total **robbery** offences for the month of August 2015 increased 26.8% when compared to August 2014 (90 offences in August 2015 vs. 71 in August 2014); During August 2015 there were:
 - 10 **financial robberies** (compared to 4 in August 2014);
 - 15 **commercial robberies** (compared to 15 in August 2014);
 - 61 **person robberies** (compared to 49 in August 2014); and
 - 4 **home invasions** (compared to 3 in August 2014).
- ◆ **Assaults** increased 5.3% this month (596 offences in August 2015 vs. 566 in August 2014).
- ◆ **Sex offences** increased 6.0% this month (71 in August 2015 compared to 67 in August 2014).

PROPERTY CRIME

- ◆ Reported **property crimes** this month increased by 31.3% when compared to August 2014 (4589 offences in August 2015 compared to 3495 in August 2014). Property crimes remained very slightly below the five year average, by -1.2%.
- ◆ **Vehicle theft** (including attempts) increased 46.3% this month when compared to August 2014 (575 offences in August 2015 vs. 393 in August 2014).
- ◆ **Theft** offences increased 22.1% this month when compared to August 2014 (2229 offences in August 2015 vs. 1826 in August 2014).
- ◆ **Break and enter** offences this month increased 63.0% when compared to August 2014 (802 offences this month compared to 492 in August 2014).
 - **Residential break and enter** offences this month increased 15.8% when compared to August 2014 (316 offences in August 2015 vs. 273 in August 2014);
 - **Commercial break and enter** offences increased 148.8% this month when compared to August 2014 (311 offences in August 2015 vs. 125 in August 2014).
- ◆ **Fraud related** offences increased 82.9% this month (256 offences in August 2015 vs. 140 in August 2014).

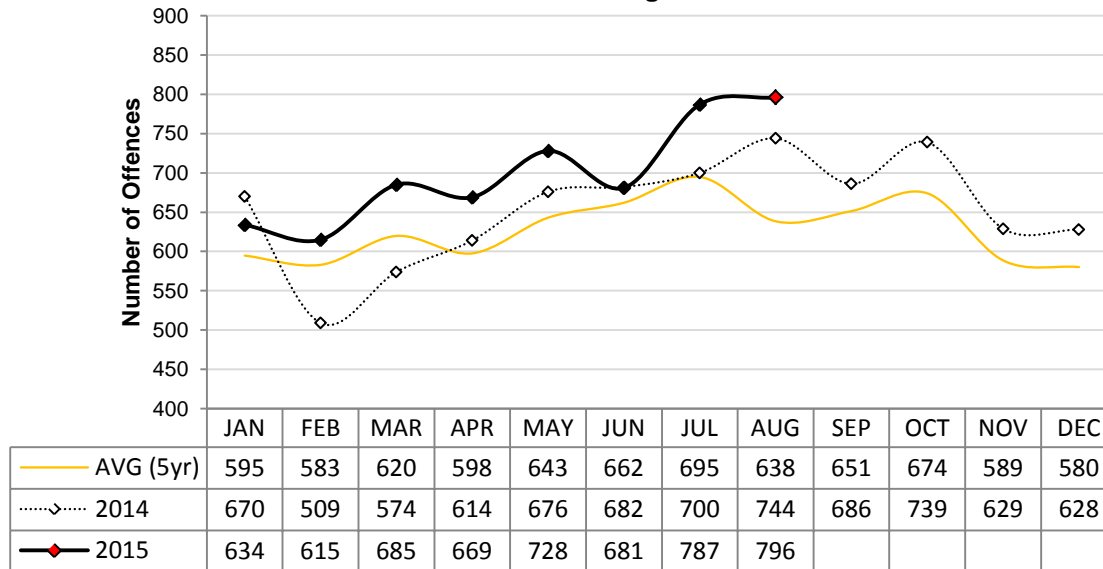
Calgary Person Crime Statistics – STATIC NUMBERS

The static crime numbers on this page are derived from historical Calgary Police Service Monthly Statistical Reports. These statistics are used when writing the Monthly Highlights page in order to make a fair comparison using data which has not been allowed to increase due to late reporting of crime. Using static numbers allows us to compare crime levels at a specific point in time and make an accurate determination of increases or decreases. The cumulative crime numbers (pages 7 – 10) are statistics derived from the CPS Police Information Management System. P.I.M.S. cannot produce static numbers and therefore the cumulative numbers reflect any late reporting of crime. To achieve an effective comparison, current data should be evaluated against the originally published data for the historic period. *Due to the dynamic nature of ongoing homicide investigations these numbers may have been manually updated to reflect the current homicide count. Due to manually updating, it's possible 1 or more homicides may be reflected within the assault category. The homicide counts are provided by the homicide unit.

August 2015

	Current Month Number Of Offences			Year To Date Number Of Offences			% Cleared 2015
	2014	2015	% Change (2014-2015)	2014	2015	% Change (2014-2015)	
PERSON CRIMES							
Homicide*	1	3	200.0%	23	18	-21.7%	55.6%
Other Offences Causing Death	0	0	N/A	0	1	N/A	100.0%
Attempted Homicide	1	1	0.0%	4	7	75.0%	28.6%
Sex Offences	67	71	6.0%	530	533	0.6%	33.2%
Robbery:							
Financial	4	10	150.0%	21	41	95.2%	68.3%
Commercial	15	15	0.0%	130	166	27.7%	26.5%
Person	49	61	24.5%	409	395	-3.4%	24.6%
Home Invasion	3	4	33.3%	35	53	51.4%	17.0%
Total Robbery	71	90	26.8%	595	655	10.1%	27.2%
Assault:							
Level 3 - Aggravated	5	11	120.0%	70	69	-1.4%	59.4%
Level 2 - Weapon/Bodily Harm	133	149	12.0%	932	1060	13.7%	57.4%
Level 1 - Common Assault	405	412	1.7%	2876	3057	6.3%	71.1%
Assault Police Officer	15	19	26.7%	110	152	38.2%	97.4%
Discharge Firearm with Intent	3	1	-66.7%	12	6	-50.0%	33.3%
Other Assaults	5	4	-20.0%	17	31	82.4%	90.3%
Total Assault	566	596	5.3%	4017	4375	8.9%	68.8%
Misc Person Crimes	38	35	-7.9%	283	344	21.6%	48.0%
TOTAL PERSON CRIMES	744	796	7.0%	5452	5933	8.8%	59.6%

**Person Crime-Static Numbers
YTD Jan 01 to Aug 31 2015**



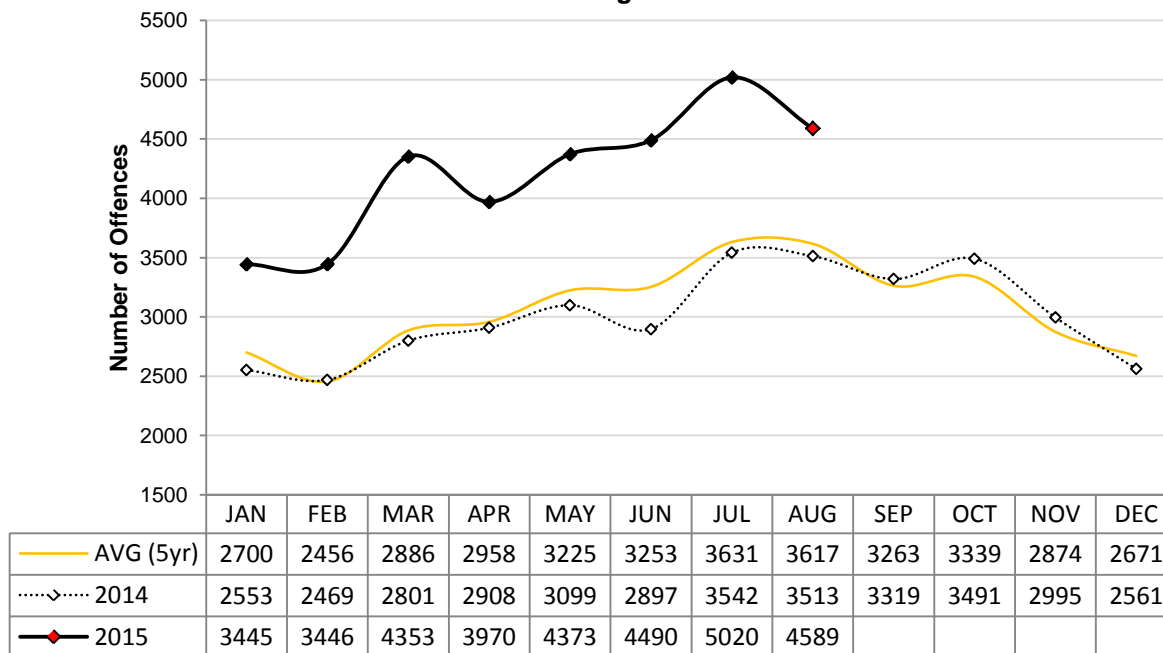
Calgary Property Crime Statistics – STATIC NUMBERS

The static crime numbers on this page are derived from historical Calgary Police Service Monthly Statistical Reports. These statistics are used when writing the Monthly Highlights page in order to make a fair comparison using data which has not been allowed to increase due to late reporting of crime. Using static numbers allows us to compare crime levels at a specific point in time and make an accurate determination of increases or decreases. The cumulative crime numbers (pages 7 – 10) are statistics derived from the CPS Police Information Management System. P.I.M.S. cannot produce static numbers and therefore the cumulative numbers reflect any late reporting of crime. To achieve an effective comparison, current data should be evaluated against the originally published data for the historic period.

August 2015

	Current Month Number Of Offences			Year To Date Number Of Offences			% Cleared 2015
	2014	2015	% Change (2014-2015)	2014	2015	% Change (2014-2015)	
PROPERTY CRIMES							
Break and Enter:							
<i>Residential B&E</i>	273	316	15.8%	1700	2344	37.9%	11.9%
<i>Commercial B&E</i>	125	311	148.8%	1277	2399	87.9%	8.2%
<i>Other B&E</i>	86	173	101.2%	798	1245	56.0%	5.1%
<i>Unlawfully in Residence</i>	8	2	-75.0%	40	23	-42.5%	69.6%
Total Break and Enter	492	802	63.0%	3815	6011	57.6%	9.2%
Theft	1826	2229	22.1%	13026	17655	35.5%	21.3%
Vehicle Theft (including attempts)	393	575	46.3%	3055	5254	72.0%	8.2%
Fraud Related	140	256	82.9%	1944	2390	22.9%	32.3%
Other Property Crimes	644	727	12.9%	4633	5129	10.7%	23.0%
TOTAL PROPERTY CRIMES	3495	4589	31.3%	26473	36439	37.6%	18.4%

**Property Crime-Static Numbers
YTD Jan 01 to Aug 31 2015**




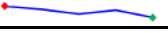




Calgary Other Crime Statistics – STATIC NUMBERS

The static crime numbers on this page are derived from historical Calgary Police Service Monthly Statistical Reports. These statistics are used when writing the Monthly Highlights page in order to make a fair comparison using data which has not been allowed to increase due to late reporting of crime. Using static numbers allows us to compare crime levels at a specific point in time and make an accurate determination of increases or decreases. The cumulative crime numbers (pages 7 – 10) are statistics derived from the CPS Police Information Management System. P.I.M.S. cannot produce static numbers and therefore the cumulative numbers reflect any late reporting of crime. To achieve an effective comparison, current data should be evaluated against the originally published data for the historic period.

August 2015

	Current Month Number Of Offences			Year To Date Number Of Offences			% Cleared 2015
	2014	2015	% Change (2014-2015)	2014	2015	% Change (2014-2015)	
OTHER CRIMINAL CODE							
Vice	0	0	N/A	57	10	-82.5%	98.2%
Gaming	0	0	N/A	1	0	-100.0%	100.0%
Weapon Related	64	71	10.9%	577	705	22.2%	99.3%
Misc	583	649	11.3%	4490	4895	9.0%	89.0%
TOTAL OTHER CRIMINAL CODE	647	720	11.3%	5125	5610	9.5%	90.3%
TOTAL OVERALL CRIMINAL CODE (excluding traffic)	4886	6105	24.9%	37050	47982	29.5%	31.6%
SELECTED OTHER							
Criminal Code Traffic	203	188	-7.4%	1809	1467	-18.9%	99.9%
Drugs	129	104	-19.4%	1293	980	-24.2%	100.0%
Selected Non Criminal Code:							
<i>Accidental/Sudden Death</i>	49	50	2.0%	456	479	5.0%	N/A
<i>Missing Persons</i>	272	277	1.8%	1862	2095	12.5%	N/A
<i>Court Order</i>	109	124	13.8%	785	952	21.3%	N/A
<i>Domestic Information</i>	1169	1172	0.3%	8492	9113	7.3%	N/A
<i>Domestic Information Standby</i>	97	82	-15.5%	548	645	17.7%	N/A
Total Selected Non Criminal Code	1696	1705	0.5%	12143	13284	9.4%	N/A
Statutes (Federal/Provincial/Municipal)	49	67	36.7%	552	580	5.1%	99.8%

Number of Drug Offences Year To Date

	2011	2012	2013	2014	2015	Trend
Demand	634	660	683	765	588	
Supply	604	542	458	528	392	
Total	1238	1202	1141	1293	980	
	Drug Type					
Cannabis	776	688	693	727	441	
Cocaine/Crack	350	411	336	415	311	
Heroin	15	18	23	33	63	
All Other Drugs	97	85	89	118	165	
Total	1238	1202	1141	1293	980	

Calgary Traffic Collisions – CUMULATIVE NUMBERS

AUGUST 2015

	Current Month # of Collisions			Year To Date # of Collisions			Year To Date Rate per 100,000 population		
	2013	2014	2015	2013	2014	2015	2013	2014	2015
Fatal Collisions	4	2	4	25	17	19	2.2	1.4	1.5
Injury Collisions	249	230	165	1768	1862	1656	152.9	155.8	134.5
Property Damage Collisions	3059	2877	2498	25867	28125	26206	2236.3	2353.2	2129.0
e-Collision Reports*	19	43	243	207	174	859	17.9	14.6	69.8
Total Collisions	3331	3152	2910	27867	30178	28740	2409.2	2524.9	2334.8
<i>Parking Lot Collisions</i>	699	662	537	5961	5864	5396	515.4	490.6	438.4
Total Reportable Collisions	2632	2490	2373	21906	24314	23344	1893.9	2034.3	1896.5

Source: Cumulative data; PIMS (September 2015)

NOTE: Total Reportable Collisions exclude collisions along private roadways or public parking lots.

The number of reported traffic collisions may continue to increase over time. Due to data collection and reporting methods, totals for the current month may not be comparable to previous years.

* e-Collision reporting is a data system which became operational in July 2009. At the time this report was published it was not possible to separate all collisions based on level of severity or to determine whether they occurred in a parking lot. Therefore, as e-Collision reports are completed and entered into the CPS records management system, it is determined whether or not they are reportable, and they are removed from the e-Collision count total and reclassified based on level of severity.

Top Collision Locations and Primary Cause of Events

Number of Collisions	Location	Primary Cause of Event	Primary Direction of Travel
25	Deerfoot Trail SE & Glenmore Trail SE	Rear End	S
23	Deerfoot Trail NE & 16 Avenue NE	Rear End	N
18	Deerfoot Trail NE & Memorial Drive E	Rear End	W
10	Deerfoot Trail SE & 17 Avenue SE	Rear End	W
8	Crowchild Trail NW & 5 Avenue NW	Rear End	N
8	Deerfoot Trail NE & McKnight Boulevard NE	Rear End	N
8	Deerfoot Trail SE & Southland Drive SE	Rear End	S
7	Crowchild Trail NW & 24 Avenue NW	Rear End	S

Source: Static data; PIMS (October 2015)

When interpreting these data, it is imperative to consider that these figures represent only the number of collisions and they do not account for associated traffic volumes, weather conditions, collision types, driver experience, or any other variables which may or may not be significant factors. The locations denoted might be associated with intersections, on/off ramps, or mid-block locations, which are in close proximity but not necessarily at the exact specified locations. Collisions occurring on private property, such as shopping mall parking lots have been excluded from the data in order to strictly assess intersection related collisions.

Calgary Crime Statistics - CUMULATIVE NUMBERS

AUGUST 2015

PERSON CRIMES	Current Month			Year To Date			Accumulated To Date		
	Number Of Offences			Number Of Offences			Percentage Cleared		
	2013	2014	2015	2013	2014	2015	2013	2014	2015
Homicide									
1st Degree	0	0	3	5	12	10	80.0%	66.7%	40.0%
2nd Degree	1	1	0	12	9	7	91.7%	88.9%	71.4%
Manslaughter	1	0	0	1	2	1	100.0%	50.0%	100.0%
Infanticide	0	0	0	0	0	0	-	-	-
TOTAL	2	1	3	18	23	18	88.9%	73.9%	55.6%
Other Offences Causing Death									
Criminal Negligence	0	0	0	0	0	1	-	-	100.0%
Other Offences Causing Death	0	0	0	0	0	0	-	-	-
TOTAL	0	0	0	0	0	1	-	-	100.0%
Attempted Homicide									
Attempted Murder	2	1	1	7	4	7	71.4%	50.0%	28.6%
Conspiracy To Commit	0	0	0	4	0	0	100.0%	-	-
TOTAL	2	1	1	11	4	7	81.8%	50.0%	28.6%
Sex Offences									
Level 3 Aggravated Sexual Assault	0	0	0	2	2	0	50.0%	0.0%	-
Level 2 Weapon/Threat/Bodily Harm	1	0	0	5	5	3	100.0%	60.0%	66.7%
Level 1 Sexual Assault	60	59	55	394	371	377	27.4%	28.6%	29.2%
Indecent Acts	16	21	10	100	126	95	46.0%	42.9%	35.8%
Other	6	14	6	67	92	58	52.2%	46.7%	53.4%
TOTAL	83	94	71	568	596	533	34.3%	34.6%	33.2%
Robbery									
Financial	4	4	10	20	21	41	65.0%	71.4%	68.3%
Commercial	17	15	15	102	131	166	38.2%	40.5%	26.5%
Person	60	53	61	409	414	395	22.5%	22.5%	24.6%
Home Invasion	3	3	4	30	35	53	13.3%	20.0%	17.0%
Robbery of Firearm	0	0	0	0	0	0	-	-	-
TOTAL	84	75	90	561	601	655	26.4%	28.0%	27.2%
Assault									
Level 3 - Aggravated	9	6	11	86	73	69	75.6%	65.8%	59.4%
Level 2 - Weapon/Bodily Harm	143	137	149	968	944	1060	60.4%	58.8%	57.4%
Level 1 - Common Assault	326	428	412	2463	2933	3057	70.4%	69.7%	71.1%
Assault Police Officer	17	16	19	150	111	152	98.7%	100.0%	97.4%
Discharge Firearm with Intent	0	3	1	10	13	6	40.0%	23.1%	33.3%
Other Assaults	1	6	4	11	19	31	90.9%	78.9%	90.3%
TOTAL	496	596	596	3688	4093	4375	69.0%	67.8%	68.6%
Miscellaneous Person Crimes									
Kidnapping/Abduction	2	2	1	20	20	12	45.0%	30.0%	50.0%
Forcible Confinement	5	10	10	73	87	70	80.8%	80.5%	72.9%
Extortion	2	6	6	19	33	61	63.2%	42.4%	19.7%
Criminal Harassment	19	35	13	187	153	162	61.0%	54.2%	50.0%
Indecent/Harassing Calls	4	4	5	28	25	39	25.0%	24.0%	38.5%
TOTAL	32	57	35	327	318	344	61.5%	56.3%	48.0%
TOTAL PERSON CRIMES	699	824	796	5173	5635	5933	60.2%	59.4%	59.6%

Calgary Crime Statistics - CUMULATIVE NUMBERS

AUGUST 2015

PROPERTY CRIMES	Current Month			Year To Date			Accumulated To Date		
	Number Of Offences			Number Of Offences			Percentage Cleared		
	2013	2014	2015	2013	2014	2015	2013	2014	2015
Break and Enter									
Residential	255	288	316	1516	1718	2344	19.1%	16.5%	11.9%
Commercial	211	136	311	1308	1300	2399	16.0%	15.9%	8.2%
Other B&E	112	95	173	733	812	1243	9.8%	15.1%	5.1%
Unlawfully in Residence	3	10	2	23	42	23	87.0%	81.0%	69.6%
B&E Firearms	0	0	0	0	1	2	-	0.0%	0.0%
TOTAL	581	529	802	3580	3873	6011	16.5%	16.7%	9.2%
Theft									
Theft Over	25	25	27	186	174	204	14.5%	12.6%	9.3%
Theft Under	776	655	634	4704	4816	5298	9.9%	10.0%	8.0%
Possession Stolen Property	91	110	126	648	694	1025	100.0%	100.0%	100.0%
From Vehicle Over	4	7	6	64	50	84	4.7%	6.0%	0.0%
From Vehicle Under	845	821	1112	5453	4937	7950	3.8%	3.5%	2.2%
Shoplift Over	0	1	3	5	8	12	20.0%	37.5%	16.7%
Shoplift Under	293	353	321	2305	2688	3082	73.6%	73.1%	68.4%
TOTAL	2034	1976	2229	13365	13367	17655	22.8%	25.0%	21.3%
Vehicle Theft									
Theft Over	352	337	462	2786	2590	4110	9.1%	10.2%	7.5%
Theft Under	64	70	99	421	437	971	19.5%	19.2%	12.7%
Attempted	20	17	14	111	94	173	1.8%	2.1%	1.7%
TOTAL	436	424	575	3318	3121	5254	10.2%	11.2%	8.2%
Fraud Related									
False Pretences	1	3	0	20	20	14	75.0%	60.0%	57.1%
Forgery/Uttering	30	25	40	257	249	226	79.0%	59.8%	60.2%
Forgery-Credit Card	11	23	28	144	222	267	31.9%	26.1%	17.6%
Impersonation	18	47	41	222	356	359	62.2%	38.8%	45.4%
Food/Lodging/Transportation	19	17	28	159	151	211	55.3%	62.9%	58.3%
Defraud Person (Under/Over)	132	124	112	1070	1168	1230	40.4%	29.1%	20.7%
Other Fraud	6	7	7	65	92	83	63.1%	51.1%	47.0%
TOTAL	217	246	256	1937	2258	2390	49.7%	37.2%	32.3%
Other Property Crimes									
Mischief Over \$5,000	9	6	10	48	65	70	20.8%	21.5%	20.0%
Mischief Under \$5,000	281	225	266	1977	1779	1840	32.4%	26.2%	20.8%
Other Mischief	149	112	90	934	750	733	85.4%	83.1%	76.1%
Vehicle Damage	316	322	338	2102	1985	2336	8.3%	9.1%	8.5%
Arson	13	18	23	113	136	150	22.1%	14.7%	19.3%
TOTAL	768	683	727	5174	4715	5129	31.9%	27.6%	23.0%
TOTAL PROPERTY CRIMES	4036	3854	4589	27374	27334	36439	24.1%	23.7%	18.4%

Calgary Crime Statistics - CUMULATIVE NUMBERS

AUGUST 2015

OTHER CRIMINAL CODE	Current Month Number Of Offences			Year To Date Number Of Offences			Accumulated To Date Percentage Cleared		
	2013	2014	2015	2013	2014	2015	2013	2014	2015
Vice									
Impede/Communicate	0	0	0	29	48	0	100.0%	100.0%	-
Live on Avails	2	1	0	9	3	0	100.0%	100.0%	-
Bawdy House	1	0	0	7	3	0	100.0%	100.0%	-
Procure/Solicit	6	2	0	25	10	10	92.0%	80.0%	30.0%
TOTAL	9	3	0	70	64	10	97.1%	96.9%	30.0%
Gaming									
Gaming House	0	0	0	1	0	0	100.0%	-	-
Betting	0	0	0	0	0	0	-	-	-
Lotteries/Games	0	0	0	0	0	0	-	-	-
Other	0	0	0	0	1	0	-	100.0%	-
TOTAL	0	0	0	1	1	0	100.0%	100.0%	-
Weapon Related									
Prohibited	8	11	5	93	105	93	100.0%	100.0%	100.0%
Restricted	14	17	24	136	151	196	100.0%	100.0%	100.0%
Explosives	0	0	0	1	0	1	100.0%	-	0.0%
Possess Prohibited	0	0	0	0	0	0	-	-	-
Use Firearm in Offence	0	1	0	4	2	1	100.0%	100.0%	100.0%
FAC Related	11	5	9	57	57	91	100.0%	100.0%	100.0%
Other	44	39	33	388	273	323	98.5%	98.2%	98.1%
TOTAL	77	73	71	679	588	705	99.1%	99.1%	99.0%
Miscellaneous									
Counterfeiting	6	18	50	103	166	405	3.9%	4.8%	16.0%
Obstruct Peace Officer	42	45	51	366	356	400	98.6%	99.2%	99.0%
Bail Violation/Fail to attend	295	332	302	2087	2436	2331	100.0%	100.0%	100.0%
Fail to comply with Probation	40	61	62	424	405	468	100.0%	100.0%	99.8%
Escape Custody/UAL	17	9	26	131	93	151	100.0%	98.9%	94.7%
Attempt to commit/accessory	2	3	1	16	17	24	100.0%	94.1%	66.7%
Miscellaneous	113	158	157	1026	1153	1116	72.7%	70.9%	71.1%
TOTAL	515	626	649	4153	4626	4895	90.7%	89.2%	86.0%
TOTAL OTHER CRIMINAL CODE	601	702	720	4903	5279	5610	92.0%	90.4%	87.5%
TOTAL CRIMINAL CODE (EXCL. TRAFFIC)	5336	5380	6105	37450	38248	47982	38.0%	38.2%	31.5%

Calgary Crime Statistics - CUMULATIVE NUMBERS

AUGUST 2015

SELECTED OTHER	Current Month			Year To Date			Accumulated To Date		
	Number Of Offences			Number Of Offences			Percentage Cleared		
	2013	2014	2015	2013	2014	2015	2013	2014	2015
Criminal Code Traffic									
Impaired Causing Death	0	0	1	0	0	4	-	-	100.0%
Impaired Causing Bodily Harm	0	0	0	3	2	5	100.0%	100.0%	100.0%
Impaired > .08	89	73	66	729	644	488	100.0%	100.0%	100.0%
Impaired Driving	107	96	79	925	833	655	99.9%	100.0%	100.0%
Fail/Refuse	27	28	21	236	245	214	100.0%	100.0%	100.0%
Dangerous Causing Death	0	0	0	1	0	4	100.0%	-	100.0%
Dangerous Operation Causing Harm	0	1	0	6	4	3	100.0%	100.0%	100.0%
Dangerous Operation of Motor Vehicle	12	10	21	95	105	94	98.9%	100.0%	97.9%
Impaired Driving (Drugs)	0	1	0	1	1	0	100.0%	100.0%	-
TOTAL	235	209	188	1996	1834	1467	99.9%	100.0%	99.9%
Drugs									
CDSA/NCA/FDA Possession	84	83	71	694	772	588	100.0%	100.0%	100.0%
CDSA/NCA/FDA Trafficking	17	22	6	145	221	71	100.0%	100.0%	100.0%
CDSA/NCA/FDA Possession for Purpose	31	37	24	318	299	306	100.0%	100.0%	100.0%
CDSA/NCA Importation/Export	0	0	2	1	0	3	100.0%	-	100.0%
CDSA/NCA Cultivation/Production	3	1	1	27	17	12	100.0%	100.0%	100.0%
CDSA/NCA/FDA Prop./Proc. from Trafficking	0	0	0	0	0	0	-	-	-
TOTAL	135	143	104	1185	1309	980	100.0%	100.0%	100.0%
Selected Non Criminal Code Incidents									
Accidental/Sudden Death	51	49	50	474	459	479	N/A	N/A	N/A
Missing Persons	241	282	277	2037	1878	2095	N/A	N/A	N/A
Court Order	102	111	124	875	787	952	N/A	N/A	N/A
Domestic Information	1183	1194	1172	8809	8587	9113	N/A	N/A	N/A
Domestic Information Standby	72	100	82	623	559	645	N/A	N/A	N/A
TOTAL	1649	1736	1705	12818	12270	13284	N/A	N/A	N/A
Statutes									
Federal	21	17	21	205	227	199	100.0%	100.0%	99.5%
Provincial	39	39	40	325	290	331	99.4%	98.6%	99.1%
Municipal	7	3	6	63	49	50	100.0%	100.0%	100.0%
TOTAL	67	59	67	593	566	580	99.7%	99.3%	99.3%
TOTAL SELECTED OTHER	2086	2147	2064	16592	15979	16311	99.9%	99.9%	99.8%