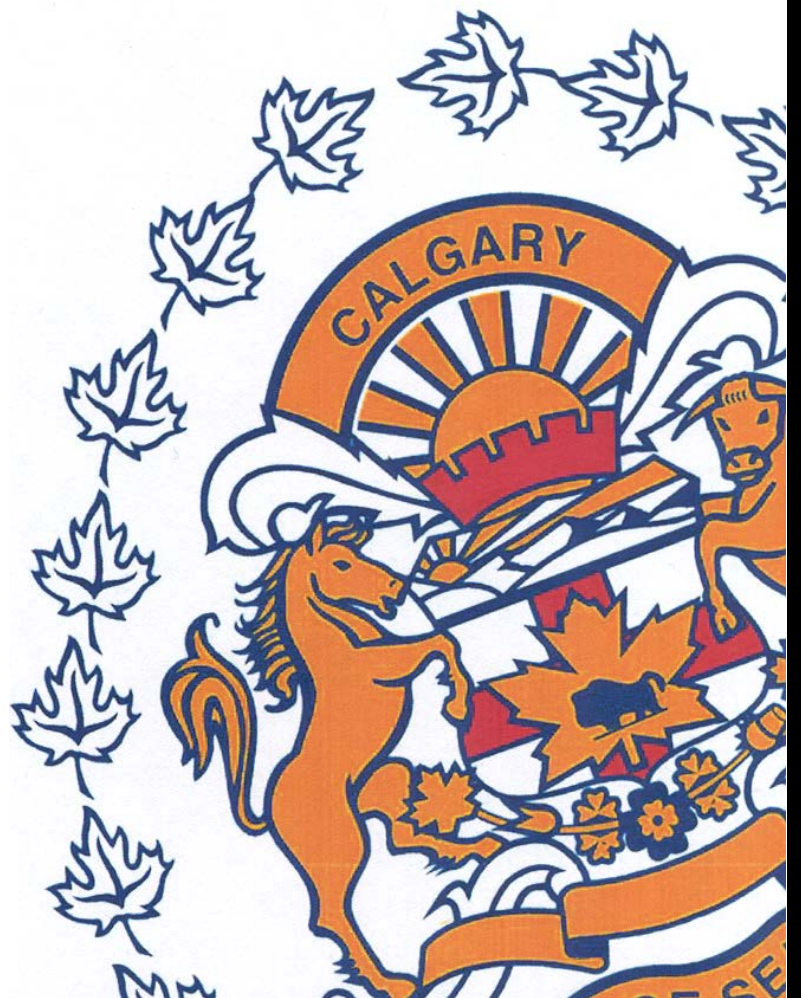


NOVEMBER

Monthly Statistical REPORT 2015

Compiled by: Centralized Analysis Unit
Crime and Intelligence Analytical Section
Strategic Services Division
© Calgary Police Service 2016



The Calgary Police Service provides this information in good faith but it provides no warranty, nor accepts any liability arising from any incorrect, incomplete or misleading information.

TABLE OF CONTENTS

	<i>Page</i>
Monthly Highlights - STATIC NUMBER COMPARISON	1
Calgary Crime Statistics – STATIC NUMBERS	
Person Crimes	2
Property Crimes	3
Other Criminal Code/Selected Other/Drug Offences	4
Calgary Traffic Collisions – CUMULATIVE NUMBERS	5
Calgary Crime Statistics - CUMULATIVE NUMBERS	6

REPORT NOTES

Most of the statistical data in this report are derived from the Police Information Management System (PIMS) and compiled by the Centralized Analysis Unit. The numbers reported may change on a daily basis due to the dynamic nature of offences being reported and cleared. Disorder data is derived from the CAD system and is static.

To a large extent, the data in this report are based on accumulated to date information. ***(Except for the Monthly Highlights which are based on static information (i.e.: a snap-shot in time).***

- For offences based on accumulated to date information, the number of offences recorded may be higher than previously reported (i.e. in previous statistical reports) due to late reporting. Although this does not greatly affect the number of occurrences for all offences, for some categories it may be as high as a 30-40% increase. The published data for the current period can therefore be expected to increase as time passes. As a result, readers should exercise caution when making comparisons between historical data and current data (i.e. previous year to this year) as data for the historic period will now include late reported offences, but data for the current period will not at this time. To achieve an effective comparison, current data should be evaluated against the originally published data for the historic period.
- Likewise, late reporting affects the number and percentage of offences cleared. Cases are often cleared months and sometimes years later. Consequently, clearances for previous years may appear to be much higher than those of the present year. Cases “cleared by charge” and those “cleared otherwise” are included in these totals.
- For offences based on “static” or “snap-shot” information, data totals will only reflect the number of offences reported in the original publication. They are not updated. Although late reporting may occur, and offences may continue to be cleared as time passes, these new events are not taken into account when preparing this statistical report.

A single incident may result in multiple offences, with each unique *Criminal Code* violation within the incident being counted as an offence. Furthermore, person crime offences are typically counted by the number of victims. Please note that offences are assigned to the month in which the offence "started", not the month they were reported or cleared. Also note that “attempted” incidents are included in these totals. For a more detailed explanation of the Offence counting procedure, please contact the Centralized Analysis Unit.

Monthly Highlights – STATIC NUMBER COMPARISON

To reduce the impact of late reporting, comments on this page are a comparison between the CPS November 2015 Statistical Report and the CPS November 2014 Statistical Report. To achieve an effective comparison, current data should be evaluated against the originally published data for the historic period.

NOVEMBER 2015

PERSON CRIME

- ◆ Reported **person crimes** for the month of November 2015 increased 15.9% when compared to November 2014 (729 offences in November 2015 vs. 629 in November 2014). Additionally, person crimes increased over the five year average for November by 23.9% (or by 140 counts).
- ◆ Total **robbery** offences for the month of November 2015 increased 70.0% when compared to November 2014 (85 offences in November 2015 vs. 50 in November 2014). During November 2015 there were:
 - 6 **financial robberies** (compared to 2 in November 2014);
 - 27 **commercial robberies** (compared to 13 in November 2014);
 - 46 **commercial robberies** (compared to 32 in November 2014); and
 - 6 **home invasions** (compared to 3 in November 2014).
- ◆ **Assaults** increased 9.1% this month (542 offences in November 2015 vs. 497 in November 2014).
- ◆ **Sex offences** increased 6.5% this month (49 offences in November 2015 compared to 46 in November 2014).

PROPERTY CRIME

- ◆ Reported **property crimes** this month increased 36.0% when compared to November 2014 (4079 offences in November 2015 compared to 3000 in November 2014). Property crimes were also 41.9% above the five year average for November, or by 1205 incidents.
- ◆ **Vehicle theft** (including attempts) increased 35.3% when compared to November 2014 (582 offences in November 2015 vs. 430 in November 2014).
- ◆ **Theft** offences increased 40.3% this month when compared to November 2014 (2079 offences in November 2015 vs. 1482 in November 2014).
- ◆ **Break and enter** offences this month increased 36.3% when compared to November 2014 (631 offences this month compared to 463 in November 2014).
 - **Residential break and enter** offences this month increased 18.5% when compared to November 2014 (243 offences in November 2015 vs. 205 in November 2014); and
 - **Commercial break and enter** offences increased 48.1% this month when compared to November 2014 (231 offences in November 2015 vs. 156 in November 2014).
- ◆ **Fraud related** offences increased 49.0% this month (234 offences in November 2015 vs. 157 in November 2014).

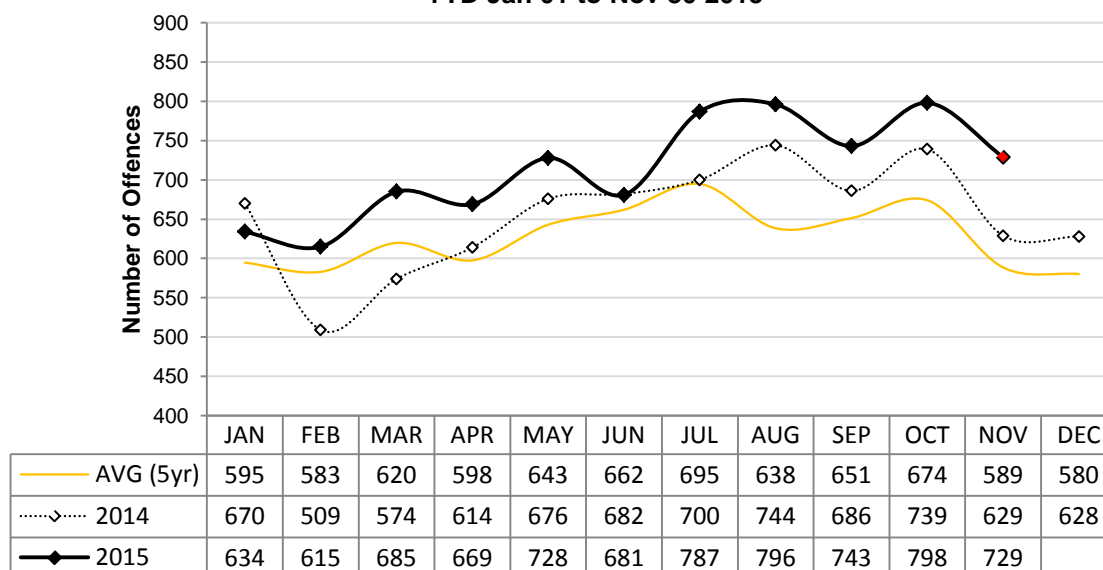
Calgary Person Crime Statistics – STATIC NUMBERS

The static crime numbers on this page are derived from historical Calgary Police Service Monthly Statistical Reports. These statistics are used when writing the Monthly Highlights page in order to make a fair comparison using data which has not been allowed to increase due to late reporting of crime. Using static numbers allows us to compare crime levels at a specific point in time and make an accurate determination of increases or decreases. The cumulative crime numbers (pages 7 – 10) are statistics derived from the CPS Police Information Management System. P.I.M.S. cannot produce static numbers and therefore the cumulative numbers reflect any late reporting of crime. To achieve an effective comparison, current data should be evaluated against the originally published data for the historic period. *Due to the dynamic nature of ongoing homicide investigations these numbers may have been manually updated to reflect the current homicide count. Due to manually updating, it's possible 1 or more homicides may be reflected within the assault category. The homicide counts are provided by the homicide unit.

NOVEMBER 2015

	Current Month Number Of Offences			Year To Date Number Of Offences			% Cleared 2015
	2014	2015	% Change (2014-2015)	2014	2015	% Change (2014-2015)	
PERSON CRIMES							
Homicide*	0	3	N/A	28	33	17.9%	43.8%
Other Offences Causing Death	0	0	N/A	0	1	N/A	69.2%
Attempted Homicide	0	7	N/A	5	18	260.0%	75.0%
Sex Offences	46	49	6.5%	721	779	8.0%	57.6%
Robbery:							
Financial	2	6	200.0%	31	54	74.2%	79.6%
Commercial	13	27	107.7%	177	264	49.2%	22.3%
Person	32	46	43.8%	558	554	-0.7%	23.8%
Home Invasion	3	6	100.0%	48	75	56.3%	20.0%
Total Robbery	50	85	70.0%	814	947	16.3%	26.3%
Assault:							
Level 3 - Aggravated	8	13	62.5%	102	103	1.0%	57.3%
Level 2 - Weapon/Bodily Harm	116	134	15.5%	1341	1490	11.1%	59.9%
Level 1 - Common Assault	344	377	9.6%	4044	4250	5.1%	70.7%
Assault Police Officer	27	13	-51.9%	172	206	19.8%	98.5%
Discharge Firearm with Intent	0	2	N/A	19	10	-47.4%	40.0%
Other Assaults	2	3	50.0%	22	45	104.5%	86.7%
Total Assault	497	542	9.1%	5700	6104	7.1%	68.8%
Misc Person Crimes	36	43	19.4%	426	536	25.8%	48.3%
TOTAL PERSON CRIMES	629	729	15.9%	7694	8418	9.4%	59.5%

**Person Crime-Static Numbers
YTD Jan 01 to Nov 30 2015**



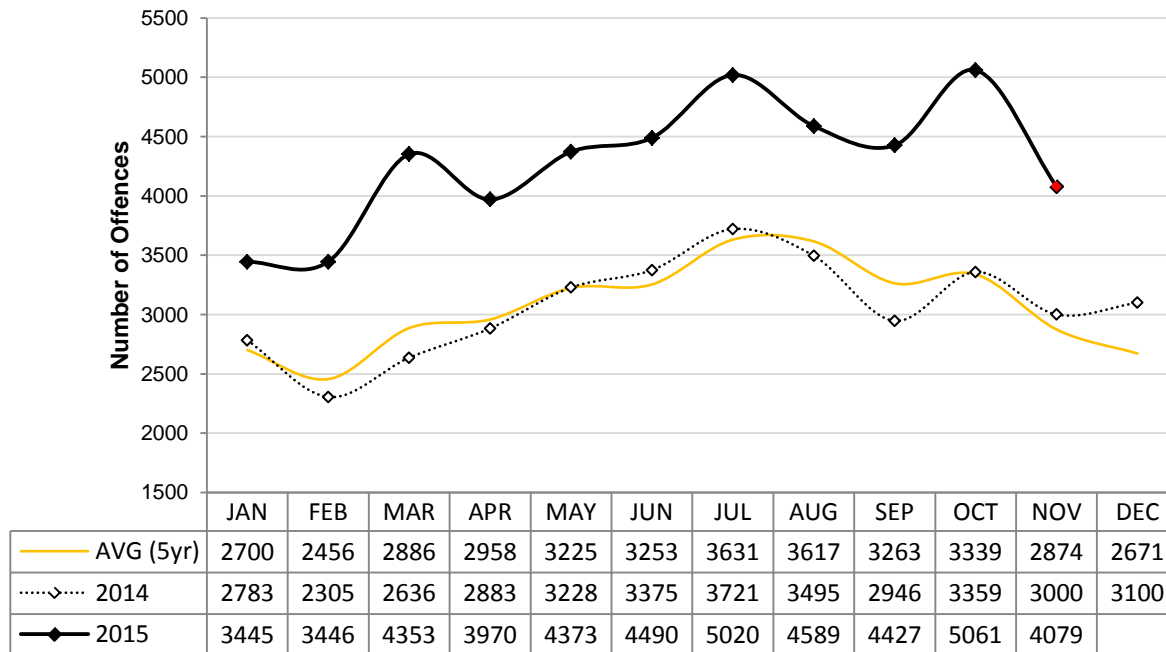
Calgary Property Crime Statistics – STATIC NUMBERS

The static crime numbers on this page are derived from historical Calgary Police Service Monthly Statistical Reports. These statistics are used when writing the Monthly Highlights page in order to make a fair comparison using data which has not been allowed to increase due to late reporting of crime. Using static numbers allows us to compare crime levels at a specific point in time and make an accurate determination of increases or decreases. The cumulative crime numbers (pages 7 – 10) are statistics derived from the CPS Police Information Management System. P.I.M.S. cannot produce static numbers and therefore the cumulative numbers reflect any late reporting of crime. To achieve an effective comparison, current data should be evaluated against the originally published data for the historic period.

NOVEMBER 2015

	Current Month Number Of Offences			Year To Date Number Of Offences			
	2014	2015	% Change (2014-2015)	2014	2015	% Change (2014-2015)	% Cleared 2015
	PROPERTY CRIMES						
Break and Enter:							
<i>Residential B&E</i>	205	243	18.5%	2285	3248	42.1%	14.1%
<i>Commercial B&E</i>	156	231	48.1%	1699	3333	96.2%	11.0%
<i>Other B&E</i>	97	150	54.6%	1110	1813	63.3%	5.3%
<i>Unlawfully in Residence</i>	5	7	40.0%	55	41	-25.5%	75.6%
Total Break and Enter	463	631	36.3%	5149	8435	63.8%	11.3%
Theft	1482	2079	40.3%	17352	25205	45.3%	21.2%
Vehicle Theft (including attempts)	430	582	35.3%	4356	7287	67.3%	8.3%
Fraud Related	157	234	49.0%	2745	3589	30.7%	31.7%
Other Property Crimes	468	553	18.2%	6383	7203	12.8%	24.2%
TOTAL PROPERTY CRIMES	3000	4079	36.0%	35985	51719	43.7%	18.9%

**Property Crime-Static Numbers
YTD Jan 01 to Nov 30 2015**



Calgary Other Crime Statistics – STATIC NUMBERS

The static crime numbers on this page are derived from historical Calgary Police Service Monthly Statistical Reports. These statistics are used when writing the Monthly Highlights page in order to make a fair comparison using data which has not been allowed to increase due to late reporting of crime. Using static numbers allows us to compare crime levels at a specific point in time and make an accurate determination of increases or decreases. The cumulative crime numbers (pages 7 – 10) are statistics derived from the CPS Police Information Management System. P.I.M.S. cannot produce static numbers and therefore the cumulative numbers reflect any late reporting of crime. To achieve an effective comparison, current data should be evaluated against the originally published data for the historic period.

NOVEMBER 2015

	Current Month Number Of Offences			Year To Date Number Of Offences			% Cleared 2015
	2014	2015	% Change (2014-2015)	2014	2015	% Change (2014-2015)	
OTHER CRIMINAL CODE							
Vice	0	0	N/A	65	14	-78.5%	50.0%
Gaming	0	0	N/A	1	0	-100.0%	-
Weapon Related	89	92	3.4%	816	1021	25.1%	98.9%
Misc	447	523	17.0%	6064	6815	12.4%	86.3%
TOTAL OTHER CRIMINAL CODE	536	615	14.7%	6946	7850	13.0%	87.9%
TOTAL OVERALL CRIMINAL CODE (excluding traffic)	4165	5423	30.2%	51486	67987	32.0%	31.9%
SELECTED OTHER							
Criminal Code Traffic	183	200	9.3%	2460	2042	-17.0%	99.9%
Drugs	108	106	-1.9%	1690	1379	-18.4%	100.0%
Selected Non Criminal Code:							
<i>Accidental/Sudden Death</i>	53	71	34.0%	632	655	3.6%	N/A
<i>Missing Persons</i>	230	235	2.2%	2687	2919	8.6%	N/A
<i>Court Order</i>	107	105	-1.9%	1092	1308	19.8%	N/A
<i>Domestic Information</i>	1033	1035	0.2%	11688	12424	6.3%	N/A
<i>Domestic Information Standby</i>	79	78	-1.3%	781	914	17.0%	N/A
Total Selected Non Criminal Code	1502	1524	1.5%	16880	18220	7.9%	N/A
Statutes (Federal/Provincial/Municipal)	50	78	56.0%	745	821	10.2%	99.5%
TOTAL SELECTED OTHER	1843	1908	3.5%	21775	22462	3.2%	99.9%

Number of Drug Offences Year To Date

	2011	2012	2013	2014	2015	Trend
Demand	874	936	974	999	837	
Supply	793	716	646	691	542	
Total	1667	1652	1620	1690	1379	
	Drug Type					
Cannabis	1052	951	980	933	626	
Cocaine/Crack	474	544	483	538	424	
Heroin	20	24	35	53	88	
All Other Drugs	121	133	122	166	241	
Total	1667	1652	1620	1690	1379	

Calgary Traffic Collisions – CUMULATIVE NUMBERS

NOVEMBER 2015

	Current Month # of Collisions			Year To Date # of Collisions			Year To Date Rate per 100,000 population		
	2013	2014	2015	2013	2014	2015	2013	2014	2015
Fatal Collisions	2	3	1	35	27	21	3.0	2.3	1.7
Injury Collisions	279	265	207	2609	2719	2452	225.6	227.5	199.2
Property Damage Collisions	4468	5154	3521	37428	40352	37688	3235.8	3376.2	3061.8
e-Collision Reports*	21	57	195	277	300	876	23.9	25.1	71.2
Total Collisions	4770	5479	3924	40349	43398	41037	3488.3	3631.0	3333.9
<i>Parking Lot Collisions</i>	740	722	520	8158	7993	7385	705.3	668.8	600.0
Total Reportable Collisions	4030	4757	3404	32191	35405	33652	2783.0	2962.3	2733.9

Source: Cumulative data; PIMS (December 2015)

NOTE: Total Reportable Collisions exclude collisions along private roadways or public parking lots.

The number of reported traffic collisions may continue to increase over time. Due to data collection and reporting methods, totals for the current month may not be comparable to previous years.

* e-Collision reporting is a data system which became operational in July 2009. At the time this report was published it was not possible to separate all collisions based on level of severity or to determine whether they occurred in a parking lot. Therefore, as e-Collision reports are completed and entered into the CPS records management system, it is determined whether or not they are reportable, and they are removed from the e-Collision count total and reclassified based on level of severity.

Top Collision Locations and Primary Cause of Events

Number of Collisions	Location	Primary Cause of Event	Primary Direction of Travel
27	Deerfoot Trail SE & Glenmore Trail SE	Rear End	E
21	Deerfoot Trail NE & Memorial Trail E	Rear End	S
16	Crowchild Trail SW & Glenmore Trail SW	Rear End	S / E
15	Deerfoot Trail SE & Southland Drive SE	Rear End	N / S
15	Glenmore Trail SW & 14 Street SW	Rear End	E
13	Deerfoot Trail NE & 64 Avenue NE	Rear End	N
12	Blackfoot Trail SE & Glenmore Trail SE	Rear End	W
12	Deerfoot Trail NE & 16 Avenue NE	Rear End	N
11	Anderson Road SE & Deerfoot Trail SE	Rear End	N
11	Deerfoot Trail NE & 32 Avenue NE	Rear End	N / S
11	16 Avenue NE & 36 Street NE	Rear End	S

Source: Static data; PIMS (January 2016)

When interpreting these data, it is imperative to consider that these figures represent only the number of collisions and they do not account for associated traffic volumes, weather conditions, collision types, driver experience, or any other variables which may or may not be significant factors. The locations denoted might be associated with intersections, on/off ramps, or mid-block locations, which are in close proximity but not necessarily at the exact specified locations. Collisions occurring on private property, such as shopping mall parking lots have been excluded from the data in order to strictly assess intersection related collisions.

NOTE: This table excludes reports made through the e-Collision reporting system.

Calgary Crime Statistics - CUMULATIVE NUMBERS

NOVEMBER 2015

<i>PERSON CRIMES</i>	Current Month			Year To Date			Accumulated To Date		
	Number Of Offences			Number Of Offences			Percentage Cleared		
	2013	2014	2015	2013	2014	2015	2013	2014	2015
Homicide									
1st Degree	1	0	2	9	14	16	77.8%	64.3%	43.8%
2nd Degree	0	0	1	12	12	13	91.7%	91.7%	69.2%
Manslaughter	0	0	0	1	2	4	100.0%	50.0%	75.0%
Infanticide	0	0	0	0	0	0	-	-	-
TOTAL	1	0	3	22	28	33	86.4%	75.0%	57.6%
Other Offences Causing Death									
Criminal Negligence	0	0	0	3	0	1	100.0%	-	100.0%
Other Offences Causing Death	0	0	0	0	0	0	-	-	-
TOTAL	0	0	0	3	0	1	100.0%	-	100.0%
Attempted Homicide									
Attempted Murder	1	0	7	9	5	18	66.7%	60.0%	38.9%
Conspiracy To Commit	0	0	0	4	0	0	100.0%	-	-
TOTAL	1	0	7	13	5	18	76.9%	60.0%	38.9%
Sex Offences									
Level 3 Aggravated Sexual Assault	0	1	0	4	3	0	25.0%	33.3%	-
Level 2 Weapon/Threat/Bodily Harm	2	1	3	9	6	6	66.7%	66.7%	50.0%
Level 1 Sexual Assault	47	35	32	536	511	538	28.0%	27.2%	31.4%
Indecent Acts	5	8	11	136	153	145	47.1%	40.5%	40.0%
Other	8	7	3	108	109	90	56.5%	47.7%	52.2%
TOTAL	62	52	49	793	782	779	35.6%	33.0%	35.6%
Robbery									
Financial	1	2	6	31	31	54	67.7%	77.4%	79.6%
Commercial	27	13	27	182	177	264	40.7%	42.9%	22.3%
Person	49	32	46	557	563	554	22.3%	22.6%	23.8%
Home Invasion	6	3	6	43	48	75	20.9%	18.8%	20.0%
Robbery of Firearm	0	0	0	0	0	0	-	-	-
TOTAL	83	50	85	813	819	947	28.0%	28.8%	26.3%
Assault									
Level 3 - Aggravated	8	10	13	106	107	103	76.4%	72.0%	57.3%
Level 2 - Weapon/Bodily Harm	115	123	134	1338	1351	1490	59.0%	58.0%	59.9%
Level 1 - Common Assault	297	368	377	3374	4094	4250	69.0%	69.0%	70.7%
Assault Police Officer	19	29	13	200	175	206	98.5%	99.4%	98.5%
Discharge Firearm with Intent	0	0	2	16	19	10	62.5%	31.6%	40.0%
Other Assaults	4	2	3	17	25	45	94.1%	84.0%	86.7%
TOTAL	443	532	542	5051	5771	6104	67.7%	67.3%	68.8%
Miscellaneous Person Crimes									
Kidnapping/Abduction	6	6	4	36	33	24	47.2%	36.4%	33.3%
Forcible Confinement	15	16	8	101	125	110	82.2%	83.2%	72.7%
Extortion	4	3	4	27	46	81	48.1%	41.3%	21.0%
Criminal Harassment	16	21	26	262	232	270	58.4%	52.6%	50.0%
Indecent/Harassing Calls	1	6	1	42	39	51	28.6%	20.5%	37.3%
TOTAL	42	52	43	468	475	536	59.4%	55.8%	48.3%
TOTAL PERSON CRIMES	632	686	729	7163	7880	8418	59.2%	59.2%	59.5%

Calgary Crime Statistics - CUMULATIVE NUMBERS

NOVEMBER 2015

<i>PROPERTY CRIMES</i>	Current Month			Year To Date			Accumulated To Date		
	Number Of Offences			Number Of Offences			Percentage Cleared		
	2013	2014	2015	2013	2014	2015	2013	2014	2015
Break and Enter									
Residential	219	219	243	2356	2309	3248	21.6%	16.6%	14.1%
Commercial	153	171	231	1857	1730	3333	15.8%	14.4%	11.0%
Other B&E	75	100	150	991	1119	1811	9.1%	12.7%	5.3%
Unlawfully in Residence	1	6	7	36	56	41	83.3%	82.1%	75.6%
B&E Firearms	0	0	0	0	1	2	-	0.0%	0.0%
TOTAL	448	496	631	5240	5215	8435	17.6%	15.7%	11.3%
Theft									
Theft Over	30	25	21	256	244	278	14.8%	13.1%	9.0%
Theft Under	584	565	588	6674	6634	7517	10.0%	9.8%	8.1%
Possession Stolen Property	70	114	115	902	940	1529	100.0%	100.0%	100.0%
From Vehicle Over	4	3	7	82	69	112	4.9%	4.3%	0.9%
From Vehicle Under	684	624	907	7607	7040	11386	3.9%	3.2%	2.3%
Shoplift Over	0	3	1	8	15	15	25.0%	33.3%	26.7%
Shoplift Under	309	322	438	3178	3662	4368	72.4%	72.9%	66.9%
TOTAL	1681	1656	2079	18707	18604	25205	22.5%	24.4%	21.2%
Vehicle Theft									
Theft Over	405	377	465	4003	3643	5687	8.6%	10.0%	7.6%
Theft Under	46	80	104	608	672	1372	18.9%	18.6%	12.2%
Attempted	18	9	13	169	124	228	2.4%	2.4%	1.3%
TOTAL	469	466	582	4780	4439	7287	9.7%	11.1%	8.3%
Fraud Related									
False Pretences	3	3	0	27	27	24	70.4%	66.7%	45.8%
Forgery/Uttering	23	26	15	317	342	331	75.1%	60.8%	55.6%
Forgery-Credit Card	26	25	29	207	304	426	33.3%	25.3%	20.9%
Impersonation	32	44	40	320	500	578	58.4%	38.2%	44.3%
Food/Lodging/Transportation	14	17	23	212	206	296	59.4%	58.7%	54.4%
Defraud Person (Under/Over)	131	151	113	1503	1623	1804	38.4%	28.0%	20.8%
Other Fraud	8	14	14	88	135	130	64.8%	56.3%	45.4%
TOTAL	237	280	234	2674	3137	3589	47.6%	36.5%	31.7%
Other Property Crimes									
Mischief Over \$5,000	9	5	8	70	87	108	22.9%	21.8%	25.0%
Mischief Under \$5,000	208	168	201	2716	2372	2592	31.6%	25.3%	21.5%
Other Mischief	77	74	95	1277	987	1072	83.3%	83.2%	77.7%
Vehicle Damage	239	240	240	2949	2819	3244	8.1%	8.3%	8.7%
Arson	14	24	9	173	222	187	17.3%	18.9%	22.5%
TOTAL	547	511	553	7185	6487	7203	30.7%	26.5%	24.2%
TOTAL PROPERTY CRIMES	3382	3409	4079	38586	37882	51719	23.55	23.0%	18.9%

Calgary Crime Statistics - CUMULATIVE NUMBERS

NOVEMBER 2015

<i>OTHER CRIMINAL CODE</i>	Current Month			Year To Date			Accumulated To Date		
	Number Of Offences			Number Of Offences			Percentage Cleared		
	2013	2014	2015	2013	2014	2015	2013	2014	2015
Vice									
Impede/Communicate	0	0	0	92	48	0	100.0%	100.0%	-
Live on Avails	0	0	0	9	3	0	100.0%	100.0%	-
Bawdy House	0	0	0	7	3	0	100.0%	100.0%	-
Procure/Solicit	6	1	0	35	13	14	94.3%	84.6%	50.0%
TOTAL	6	1	0	143	67	14	98.6%	97.0%	50.0%
Gaming									
Gaming House	0	0	0	1	0	0	100.0%	-	-
Betting	0	0	0	0	0	0	-	-	-
Lotteries/Games	0	0	0	0	0	0	-	-	-
Other	0	0	0	0	1	0	-	100.0%	-
TOTAL	0	0	0	1	1	0	100.0%	100.0%	-
Weapon Related									
Prohibited	6	10	15	120	136	129	100.0%	100.0%	100.0%
Restricted	22	28	20	200	216	268	99.5%	100.0%	100.0%
Explosives	0	0	0	1	0	1	100.0%	-	0.0%
Possess Prohibited	0	0	0	0	0	0	-	-	-
Use Firearm in Offence	0	1	0	6	6	4	100.0%	100.0%	100.0%
FAC Related	7	19	13	80	87	144	100.0%	100.0%	100.0%
Other	29	48	44	499	404	475	98.4%	98.0%	97.9%
TOTAL	64	106	92	906	849	1021	99.0%	99.1%	98.9%
Miscellaneous									
Counterfeiting	5	17	29	124	203	519	3.2%	4.9%	16.6%
Obstruct Peace Officer	30	29	47	471	473	549	98.7%	98.9%	98.9%
Bail Violation/Fail to attend	277	235	259	2980	3210	3247	99.9%	100.0%	100.0%
Fail to comply with Probation	39	40	43	572	548	652	100.0%	100.0%	100.0%
Escape Custody/UAL	17	18	10	179	134	199	100.0%	98.5%	95.0%
Attempt to commit/accessory	5	2	2	29	26	32	96.6%	92.3%	71.9%
Miscellaneous	118	174	133	1391	1621	1617	72.1%	71.7%	70.6%
TOTAL	491	515	523	5746	6215	6815	91.0%	89.4%	86.3%
TOTAL OTHER CRIMINAL CODE	561	622	615	6796	7132	7850	92.2%	90.6%	87.9%
TOTAL CRIMINAL CODE (EXCL. TRAFFIC)	4575	4717	5423	52545	52894	67989	37.3%	36.4%	31.9%

Calgary Crime Statistics - CUMULATIVE NUMBERS

NOVEMBER 2015

<i>SELECTED OTHER</i>	Current Month			Year To Date			Accumulated To Date		
	Number Of Offences			Number Of Offences			Percentage Cleared		
	2013	2014	2015	2013	2014	2015	2013	2014	2015
Criminal Code Traffic									
Impaired Causing Death	0	1	0	3	1	4	100.0%	100.0%	100.0%
Impaired Causing Bodily Harm	0	0	0	6	2	7	100.0%	100.0%	100.0%
Impaired > .08	75	63	76	981	856	680	100.0%	100.0%	100.0%
Impaired Driving	110	89	93	1267	1129	909	99.9%	100.0%	100.0%
Fail/Refuse	42	26	18	339	341	292	100.0%	100.0%	100.0%
Dangerous Causing Death	0	0	0	4	0	4	100.0%	-	100.0%
Dangerous Operation Causing Harm	0	0	0	12	5	10	100.0%	100.0%	100.0%
Dangerous Operation of Motor Vehicle	12	10	13	129	149	136	99.2%	99.3%	98.5%
Impaired Driving (Drugs)	0	0	0	1	1	0	100.0%	100.0%	-
TOTAL	239	189	200	2742	2484	2042	99.9%	100.0%	99.9%
Drugs									
CDSA/NCA/FDA Possession	95	62	66	991	1012	837	100.0%	100.0%	100.0%
CDSA/NCA/FDA Trafficking	16	12	2	202	258	97	100.0%	100.0%	100.0%
CDSA/NCA/FDA Possession for Purpose	40	36	37	435	419	429	100.0%	100.0%	100.0%
CDSA/NCA Importation/Export	0	0	0	2	0	3	100.0%	-	100.0%
CDSA/NCA Cultivation/Production	3	2	1	34	26	13	100.0%	100.0%	100.0%
CDSA/NCA/FDA Prop./Proc. from Trafficking	0	0	0	0	0	0	-	-	-
TOTAL	154	112	106	1664	1715	1379	100.0%	100.0%	100.0%
Selected Non Criminal Code Incidents									
Accidental/Sudden Death	64	54	71	658	635	655	N/A	N/A	N/A
Missing Persons	173	234	235	2657	2696	2919	N/A	N/A	N/A
Court Order	102	105	105	1170	1090	1308	N/A	N/A	N/A
Domestic Information	1044	1057	1035	12072	11777	12424	N/A	N/A	N/A
Domestic Information Standby	58	83	78	832	792	914	N/A	N/A	N/A
TOTAL	1441	1533	1524	17389	16990	18220	N/A	N/A	N/A
Statutes									
Federal	32	17	16	285	283	266	99.3%	100.0%	99.6%
Provincial	20	34	54	416	409	483	99.5%	98.5%	99.4%
Municipal	5	3	8	85	67	72	100.0%	100.0%	100.0%
TOTAL	57	54	78	786	759	821	99.5%	99.2%	99.5%
TOTAL SELECTED OTHER	1891	1888	1908	22581	21948	22462	99.9%	99.8%	99.9%