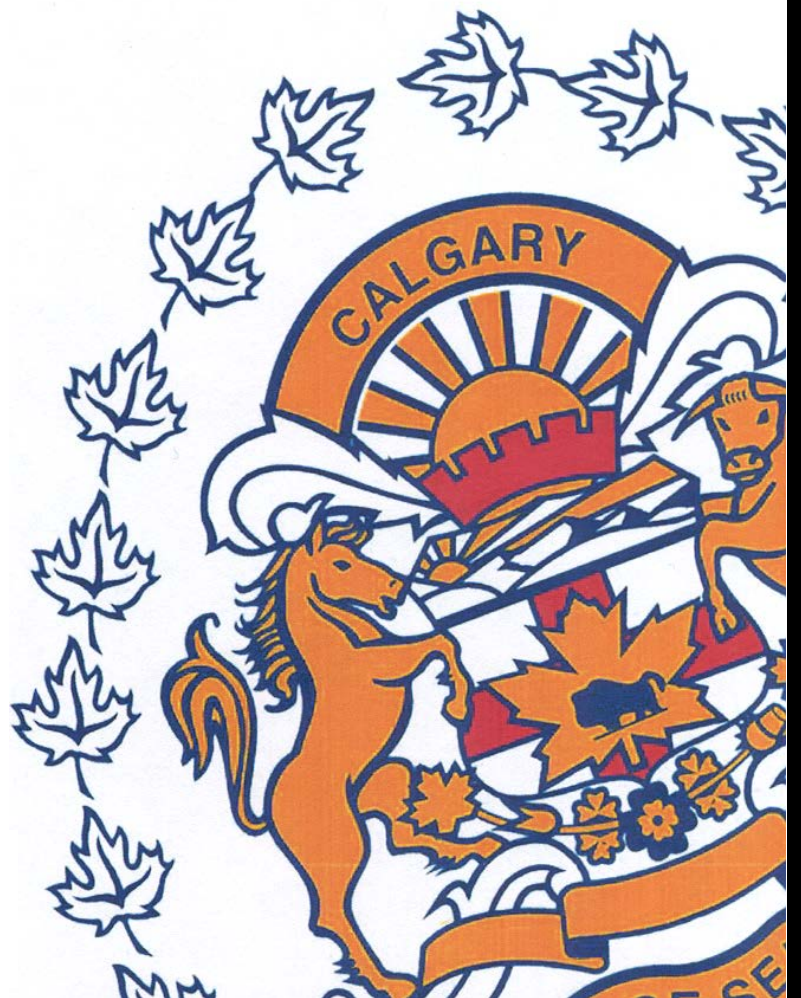


DECEMBER

Monthly Statistical REPORT 2015

Compiled by: Centralized Analysis Unit
Crime and Intelligence Analytical Section
Strategic Services Division
© Calgary Police Service 2016



The Calgary Police Service provides this information in good faith but it provides no warranty, nor accepts any liability arising from any incorrect, incomplete or misleading information.

TABLE OF CONTENTS

	<i>Page</i>
Monthly Highlights - STATIC NUMBER COMPARISON	1
Calgary Crime Statistics – STATIC NUMBERS	
Person Crimes	2
Property Crimes	3
Other Criminal Code/Selected Other/Drug Offences	4
Calgary Traffic Collisions – CUMULATIVE NUMBERS	5
Calgary Crime Statistics - CUMULATIVE NUMBERS	6

REPORT NOTES

Most of the statistical data in this report are derived from the Police Information Management System (PIMS) and compiled by the Centralized Analysis Unit. The numbers reported may change on a daily basis due to the dynamic nature of offences being reported and cleared. Disorder data is derived from the CAD system and is static.

To a large extent, the data in this report are based on accumulated to date information. ***(Except for the Monthly Highlights which are based on static information (i.e.: a snap-shot in time).***

- For offences based on accumulated to date information, the number of offences recorded may be higher than previously reported (i.e. in previous statistical reports) due to late reporting. Although this does not greatly affect the number of occurrences for all offences, for some categories it may be as high as a 30-40% increase. The published data for the current period can therefore be expected to increase as time passes. As a result, readers should exercise caution when making comparisons between historical data and current data (i.e. previous year to this year) as data for the historic period will now include late reported offences, but data for the current period will not at this time. To achieve an effective comparison, current data should be evaluated against the originally published data for the historic period.
- Likewise, late reporting affects the number and percentage of offences cleared. Cases are often cleared months and sometimes years later. Consequently, clearances for previous years may appear to be much higher than those of the present year. Cases “cleared by charge” and those “cleared otherwise” are included in these totals.
- For offences based on “static” or “snap-shot” information, data totals will only reflect the number of offences reported in the original publication. They are not updated. Although late reporting may occur, and offences may continue to be cleared as time passes, these new events are not taken into account when preparing this statistical report.

A single incident may result in multiple offences, with each unique *Criminal Code* violation within the incident being counted as an offence. Furthermore, person crime offences are typically counted by the number of victims. Please note that offences are assigned to the month in which the offence "started", not the month they were reported or cleared. Also note that “attempted” incidents are included in these totals. For a more detailed explanation of the Offence counting procedure, please contact the Centralized Analysis Unit.

Monthly Highlights – STATIC NUMBER COMPARISON

To reduce the impact of late reporting, comments on this page are a comparison between the CPS December 2015 Statistical Report and the CPS December 2014 Statistical Report. To achieve an effective comparison, current data should be evaluated against the originally published data for the historic period.

DECEMBER 2015

PERSON CRIME

- ◆ Reported **person crimes** for the month of December 2015 increased 13.0% when compared to December 2014 (711 offences in Dec. 2015 vs. 629 in Dec. 2014).
- ◆ Total **robbery** offences in December 2015 increased 30.0% when compared to December 2014 (91 offences in Dec. 2015 vs. 70 in Dec. 2014); During December 2015 there were:
 - 4 **financial robberies** (compared to 4 in Dec. 2014);
 - 38 **commercial robberies** (compared to 18 in Dec. 2014);
 - 44 **person robberies** (compared to 46 in Dec. 2014); and
 - 5 **home invasions** (compared to 2 in Dec. 2014).
- ◆ **Assaults** increased 12.7% this month (531 offences in Dec. 2015 compared to 471 in Dec. 2014).
- ◆ **Sex offences** increased 34.1% this month (55 offences in Dec. 2015 vs. 41 in Dec. 2014).

PROPERTY CRIME

- ◆ Reported **property crimes** this month increased 30.0% when compared to December 2014 (4030 offences in Dec. 2015 compared to 3100 in Dec. 2014).
- ◆ **Vehicle theft** (including attempts) increased 55.3% when compared to Dec. 2014 (632 offences in Dec. 2015 vs. 407 in Dec. 2014).
- ◆ **Theft** offences increased 39.5% this month when compared to December 2014 (1982 offences in Dec. 2015 vs. 1421 in Dec. 2014).
- ◆ **Break and enter** offences this month decreased 5.1% when compared to December 2014 (600 offences this month compared to 632 in Dec. 2014).
 - **Residential break and enter** offences this month increased 8.7% when compared to December 2014 (250 offences in Dec. 2015 vs. 230 in Dec. 2014); and
 - **Commercial break and enter** offences decreased 24.0% this month when compared to December 2014 (212 offences in Dec. 2015 vs. 279 in Dec. 2014).
- ◆ **Fraud related** offences increased by 72.9% this month when compared to December 2014 (287 offences in Dec. 2015 vs. 166 offences in Dec. 2014).

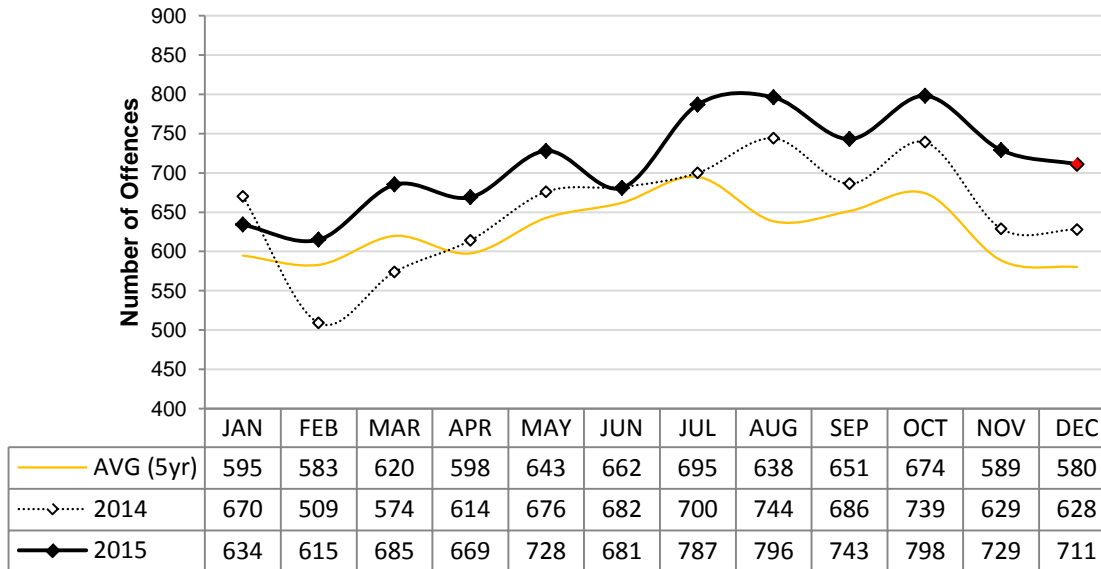
Calgary Person Crime Statistics – STATIC NUMBERS

The static crime numbers on this page are derived from historical Calgary Police Service Monthly Statistical Reports. These statistics are used when writing the Monthly Highlights page in order to make a fair comparison using data which has not been allowed to increase due to late reporting of crime. Using static numbers allows us to compare crime levels at a specific point in time and make an accurate determination of increases or decreases. The cumulative crime numbers (pages 7 – 10) are statistics derived from the CPS Police Information Management System. P.I.M.S. cannot produce static numbers and therefore the cumulative numbers reflect any late reporting of crime. To achieve an effective comparison, current data should be evaluated against the originally published data for the historic period. *Due to the dynamic nature of ongoing homicide investigations these numbers may have been manually updated to reflect the current homicide count. Due to manually updating, it's possible 1 or more homicides may be reflected within the assault category. The homicide counts are provided by the homicide unit.

DECEMBER 2015

	Current Month Number Of Offences			Year To Date Number Of Offences			% Cleared 2015
	2014	2015	% Change (2014-2015)	2014	2015	% Change (2014-2015)	
PERSON CRIMES							
Homicide*	2	1	-50.0%	31	34	9.7%	61.8%
Other Offences Causing Death	0	0	N/A	0	1	N/A	100.0%
Attempted Homicide	1	1	0.0%	6	21	250.0%	38.1%
Sex Offences	41	55	34.1%	772	855	10.8%	35.6%
Robbery:							
Financial	4	4	0.0%	35	58	65.7%	74.1%
Commercial	18	38	111.1%	195	303	55.4%	23.1%
Person	46	44	-4.3%	604	599	-0.8%	24.0%
Home Invasion	2	5	150.0%	50	80	60.0%	21.3%
Total Robbery	70	91	30.0%	884	1040	17.6%	26.3%
Assault:							
Level 3 - Aggravated	5	2	-60.0%	109	106	-2.8%	62.3%
Level 2 - Weapon/Bodily Harm	124	119	-4.0%	1475	1618	9.7%	60.1%
Level 1 - Common Assault	324	377	16.4%	4387	4647	5.9%	70.4%
Assault Police Officer	15	29	93.3%	189	239	26.5%	98.3%
Discharge Firearm with Intent	2	1	-50.0%	21	12	-42.9%	58.3%
Other Assaults	1	3	200.0%	25	48	92.0%	87.5%
Total Assault	471	531	12.7%	6206	6670	7.5%	68.9%
Misc Person Crimes	44	32	-27.3%	488	588	20.5%	48.1%
TOTAL PERSON CRIMES	629	711	13.0%	8387	9209	9.8%	59.6%

**Person Crime-Static Numbers
YTD Jan 01 to Dec 31 2015**



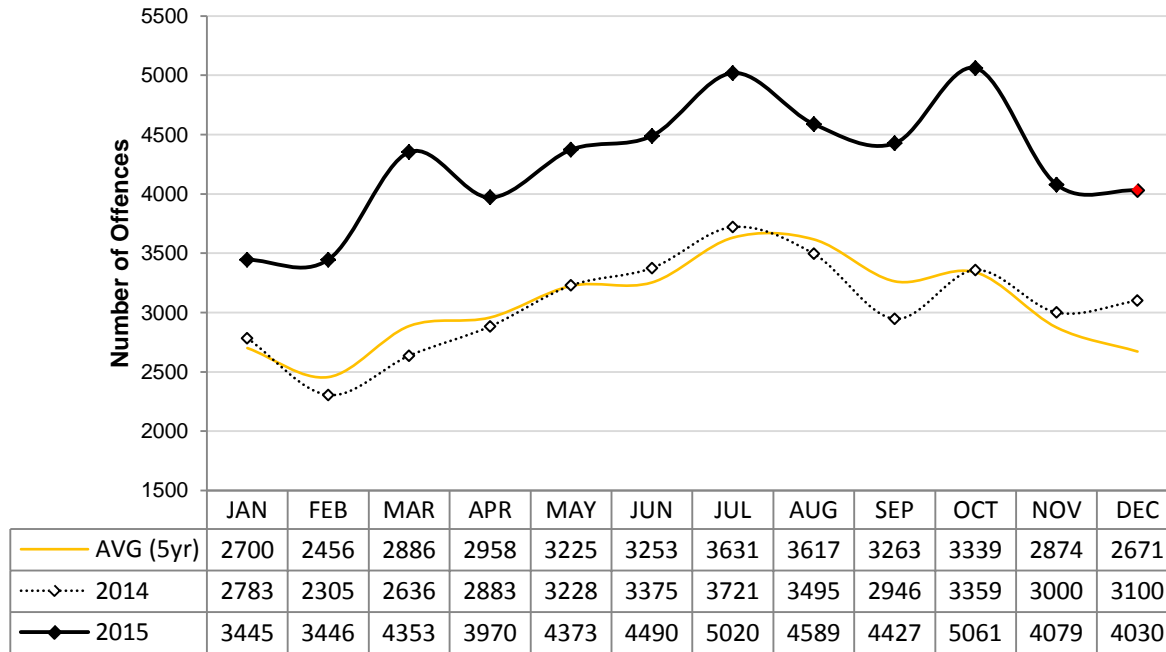
Calgary Property Crime Statistics – STATIC NUMBERS

The static crime numbers on this page are derived from historical Calgary Police Service Monthly Statistical Reports. These statistics are used when writing the Monthly Highlights page in order to make a fair comparison using data which has not been allowed to increase due to late reporting of crime. Using static numbers allows us to compare crime levels at a specific point in time and make an accurate determination of increases or decreases. The cumulative crime numbers (pages 7 – 10) are statistics derived from the CPS Police Information Management System. P.I.M.S. cannot produce static numbers and therefore the cumulative numbers reflect any late reporting of crime. To achieve an effective comparison, current data should be evaluated against the originally published data for the historic period.

DECEMBER 2015

	Current Month Number Of Offences			Year To Date Number Of Offences			% Cleared 2015
	2014	2015	% Change (2014-2015)	2014	2015	% Change (2014-2015)	
PROPERTY CRIMES							
Break and Enter:							
<i>Residential B&E</i>	230	250	8.7%	2528	3505	38.6%	14.6%
<i>Commercial B&E</i>	279	212	-24.0%	1993	3563	78.8%	11.2%
<i>Other B&E</i>	120	137	14.2%	1231	1966	59.7%	5.3%
<i>Unlawfully in Residence</i>	3	1	-66.7%	59	43	-27.1%	76.7%
Total Break and Enter	632	600	-5.1%	5811	9077	56.2%	11.5%
Theft	1421	1982	39.5%	19788	27416	38.5%	21.5%
Vehicle Theft (including attempts)	407	632	55.3%	4787	7935	65.8%	8.4%
Fraud Related	166	287	72.9%	3052	4073	33.5%	31.3%
Other Property Crimes	474	529	11.6%	6894	7769	12.7%	24.7%
TOTAL PROPERTY CRIMES	3100	4030	30.0%	40332	56270	39.5%	19.2%

**Property Crime-Static Numbers
YTD Jan 01 to Dec 31 2015**




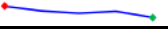




Calgary Other Crime Statistics – STATIC NUMBERS

The static crime numbers on this page are derived from historical Calgary Police Service Monthly Statistical Reports. These statistics are used when writing the Monthly Highlights page in order to make a fair comparison using data which has not been allowed to increase due to late reporting of crime. Using static numbers allows us to compare crime levels at a specific point in time and make an accurate determination of increases or decreases. The cumulative crime numbers (pages 7 – 10) are statistics derived from the CPS Police Information Management System. P.I.M.S. cannot produce static numbers and therefore the cumulative numbers reflect any late reporting of crime. To achieve an effective comparison, current data should be evaluated against the originally published data for the historic period.

DECEMBER 2015

	Current Month Number Of Offences			Year To Date Number Of Offences			% Cleared 2015
	2014	2015	% Change (2014-2015)	2014	2015	% Change (2014-2015)	
OTHER CRIMINAL CODE							
Vice	0	1	N/A	66	15	-77.3%	53.3%
Gaming	0	0	N/A	1	1	0.0%	100.0%
Weapon Related	63	95	50.8%	884	1121	26.8%	98.9%
Misc	428	559	30.6%	6530	7415	13.6%	86.5%
TOTAL OTHER CRIMINAL CODE	491	655	33.4%	7481	8552	14.3%	88.1%
TOTAL OVERALL CRIMINAL CODE (excluding traffic)	4220	5396	27.9%	56200	74031	31.7%	32.2%
SELECTED OTHER							
Criminal Code Traffic	242	196	-19.0%	2707	2247	-17.0%	99.9%
Drugs	115	99	-13.9%	1808	1503	-16.9%	100.0%
Selected Non Criminal Code:							
Accidental/Sudden Death	61	65	6.6%	696	723	3.9%	N/A
Missing Persons	240	268	11.7%	2936	3192	8.7%	N/A
Court Order	92	103	12.0%	1183	1412	19.4%	N/A
Domestic Information	1127	1111	-1.4%	12833	13557	5.6%	N/A
Domestic Information Standby	75	80	6.7%	861	996	15.7%	N/A
Total Selected Non Criminal Code	1595	1627	2.0%	18509	19880	7.4%	N/A
Statutes (Federal/Provincial/Municipal)	63	67	6.3%	812	900	10.8%	99.4%
TOTAL SELECTED OTHER	2015	1989	-1.3%	23836	24530	2.9%	99.8%

Number of Drug Offences Year To Date

	2011	2012	2013	2014	2015	Trend
Demand	950	1013	1037	1073	904	
Supply	851	747	695	735	599	
Total	1801	1760	1732	1808	1503	
Drug Type						
Cannabis	1139	1021	1037	988	681	
Cocaine/Crack	510	576	526	582	459	
Heroin	26	26	37	60	92	
All Other Drugs	126	137	132	178	271	
Total	1801	1760	1732	1808	1503	

Calgary Traffic Collisions – CUMULATIVE NUMBERS

DECEMBER 2015

	Current Month # of Collisions			Year To Date # of Collisions			Year To Date Rate per 100,000 population		
	2013	2014	2015	2013	2014	2015	2013	2014	2015
Fatal Collisions	3	1	1	38	28	22	3.3	2.3	1.8
Injury Collisions	226	251	151	2835	2970	2639	245.1	248.5	214.4
Property Damage Collisions	5547	3798	3438	42975	44150	41611	3715.4	3694.0	3380.5
e-Collision Reports*	14	42	714	291	341	1499	25.2	28.5	121.8
Total Collisions	5790	4092	4304	46139	47489	45771	3988.9	3973.3	3718.5
<i>Parking Lot Collisions</i>	937	675	514	9095	8668	7990	786.3	725.2	649.1
Total Reportable Collisions	4853	3417	3790	37044	38821	37781	3202.6	3248.1	3069.3

Source: Cumulative data; PIMS (January 2016)

NOTE: Total Reportable Collisions exclude collisions along private roadways or public parking lots.

The number of reported traffic collisions may continue to increase over time. Due to data collection and reporting methods, totals for the current month may not be comparable to previous years.

* e-Collision reporting is a data system which became operational in July 2009. At the time this report was published it was not possible to separate all collisions based on level of severity or to determine whether they occurred in a parking lot. Therefore, as e-Collision reports are completed and entered into the CPS records management system, it is determined whether or not they are reportable, and they are removed from the e-Collision count total and reclassified based on level of severity.

Top Collision Locations and Primary Cause of Events

Number of Collisions	Location	Primary Cause of Event	Primary Direction of Travel
33	Deerfoot Trail NE & Memorial Drive E	Sideswipe / Rear End	N / S
25	Deerfoot Trail SE & Glenmore Trail SE	Rear End	N / S
23	Deerfoot Trail NE & 16 Avenue NE	Rear End	E
17	Crowchild Trail SW & Glenmore Trail SW	Rear End	S / W
14	16 Avenue NE & 36 Street NE	Rear End	S / W
14	Beddington Trail NE & Deerfoot Trail NE	Struck Object / Rear End	S
13	Deerfoot Trail NE & McKnight Boulevard NE	Rear End	S
13	Deerfoot Trail NE & 64 Avenue NE	Struck Object / Rear End	N
12	Crowchild Trail NW & Shaganappi Trail NW	Rear End	E
12	Deerfoot Trail SE & 17 Avenue SE	Sideswipe / Rear End	E
12	Glenmore Trail SW & 14 Street SW	Rear End	E
12	Bow Trail SW & Sarcee Trail SW	Rear End	N

Source: Static data; PIMS (January 2016)

When interpreting these data, it is imperative to consider that these figures represent only the number of collisions and they do not account for associated traffic volumes, weather conditions, collision types, driver experience, or any other variables which may or may not be significant factors. The locations denoted might be associated with intersections, on/off ramps, or mid-block locations, which are in close proximity but not necessarily at the exact specified locations. Collisions occurring on private property, such as shopping mall parking lots have been excluded from the data in order to strictly assess intersection related collisions.

NOTE: This table excludes reports made through the e-Collision reporting system.

Calgary Crime Statistics - CUMULATIVE NUMBERS

DECEMBER 2015

<i>PERSON CRIMES</i>	Current Month			Year To Date			Accumulated To Date		
	Number Of Offences			Number Of Offences			Percentage Cleared		
	2013	2014	2015	2013	2014	2015	2013	2014	2015
Homicide									
1st Degree	1	1	1	10	15	17	70.0%	60.0%	41.2%
2nd Degree	0	0	0	12	12	13	91.7%	91.7%	76.9%
Manslaughter	0	0	0	1	2	4	100.0%	50.0%	100.0%
Infanticide	0	0	0	0	0	0	-	-	-
TOTAL	1	1	1	23	29	34	82.6%	72.4%	61.8%
Other Offences Causing Death									
Criminal Negligence	0	0	0	3	0	1	100.0%	-	100.0%
Other Offences Causing Death	0	0	0	0	0	0	-	-	-
TOTAL	0	0	0	3	0	1	100.0%	-	100.0%
Attempted Homicide									
Attempted Murder	0	1	1	9	6	21	66.7%	50.0%	38.1%
Conspiracy To Commit	0	0	0	4	0	0	100.0%	-	-
TOTAL	0	1	1	13	6	21	76.9%	50.0%	38.1%
Sex Offences									
Level 3 Aggravated Sexual Assault	0	1	1	4	4	1	25.0%	50.0%	100.0%
Level 2 Weapon/Threat/Bodily Harm	0	1	0	9	7	6	66.7%	57.1%	50.0%
Level 1 Sexual Assault	38	45	40	574	556	591	28.4%	27.0%	30.6%
Indecent Acts	12	4	13	148	157	160	45.9%	40.8%	41.3%
Other	4	10	1	112	119	97	56.3%	49.6%	54.6%
TOTAL	54	61	55	847	843	855	35.5%	33.1%	35.6%
Robbery									
Financial	3	4	4	34	35	58	61.8%	77.1%	74.1%
Commercial	26	19	38	208	196	303	39.9%	42.3%	23.1%
Person	37	47	44	594	610	599	22.7%	22.6%	24.0%
Home Invasion	2	2	5	45	50	80	24.4%	18.0%	21.3%
Robbery of Firearm	0	0	0	0	0	0	-	-	-
TOTAL	68	72	91	881	891	1040	28.4%	28.8%	26.3%
Assault									
Level 3 - Aggravated	8	6	2	114	113	106	77.2%	72.6%	62.3%
Level 2 - Weapon/Bodily Harm	108	130	119	1446	1481	1618	58.8%	58.3%	60.1%
Level 1 - Common Assault	297	352	377	3671	4446	4647	69.0%	69.0%	70.4%
Assault Police Officer	17	16	29	217	191	239	98.6%	99.5%	98.3%
Discharge Firearm with Intent	0	2	1	16	21	12	62.5%	28.6%	58.3%
Other Assaults	2	1	3	19	26	48	89.5%	84.6%	87.5%
TOTAL	432	507	531	5483	6278	6670	67.7%	67.4%	68.9%
Miscellaneous Person Crimes									
Kidnapping/Abduction	0	8	2	36	41	29	47.2%	43.9%	31.0%
Forcible Confinement	5	11	12	106	136	122	83.0%	82.4%	74.6%
Extortion	5	10	6	32	56	92	50.0%	44.6%	21.7%
Criminal Harassment	16	26	11	278	258	291	59.7%	51.6%	49.1%
Indecent/Harassing Calls	3	3	1	45	42	54	26.7%	23.8%	37.0%
TOTAL	29	58	32	497	533	588	60.2%	55.9%	48.1%
TOTAL PERSON CRIMES	584	700	711	7747	8580	9209	59.3%	59.3%	59.6%

Calgary Crime Statistics - CUMULATIVE NUMBERS

DECEMBER 2015

<i>PROPERTY CRIMES</i>	Current Month			Year To Date			Accumulated To Date		
	Number Of Offences			Number Of Offences			Percentage Cleared		
	2013	2014	2015	2013	2014	2015	2013	2014	2015
Break and Enter									
Residential	152	239	250	2508	2548	3505	21.1%	16.2%	14.6%
Commercial	196	315	212	2053	2045	3563	17.3%	13.8%	11.2%
Other B&E	73	137	135	1064	1256	1962	8.8%	11.9%	5.3%
Unlawfully in Residence	2	3	1	38	59	43	81.6%	78.0%	76.7%
B&E Firearms	0	0	2	0	1	4	-	0.0%	0.0%
TOTAL	423	694	600	5663	5909	9077	17.8%	15.1%	11.5%
Theft									
Theft Over	19	27	20	275	271	306	13.8%	13.3%	8.8%
Theft Under	484	555	526	7158	7189	8119	10.1%	9.8%	8.2%
Possession Stolen Property	71	118	127	973	1058	1719	100.0%	100.0%	100.0%
From Vehicle Over	7	10	7	89	79	119	4.5%	3.8%	0.8%
From Vehicle Under	492	607	893	8099	7647	12348	3.8%	3.1%	2.3%
Shoplift Over	1	0	4	9	15	19	33.3%	33.3%	21.1%
Shoplift Under	296	344	405	3474	4006	4786	72.5%	72.9%	67.0%
TOTAL	1370	1661	1982	20077	20265	27416	22.7%	24.5%	21.5%
Vehicle Theft									
Theft Over	369	353	496	4372	3996	6192	8.4%	10.5%	7.6%
Theft Under	64	78	121	672	750	1500	17.6%	18.1%	12.5%
Attempted	13	13	15	182	137	243	2.2%	2.2%	1.2%
TOTAL	446	444	632	5226	4883	7935	9.4%	11.4%	8.4%
Fraud Related									
False Pretences	2	4	0	29	31	27	65.5%	67.7%	40.7%
Forgery/Uttering	36	35	18	353	377	368	73.7%	60.2%	55.4%
Forgery-Credit Card	25	40	31	232	344	472	31.5%	23.5%	21.4%
Impersonation	56	33	40	376	533	650	57.4%	37.5%	44.2%
Food/Lodging/Transportation	17	27	19	229	233	317	60.7%	59.2%	54.3%
Defraud Person (Under/Over)	142	147	169	1645	1770	2087	37.8%	28.1%	20.7%
Other Fraud	9	11	10	97	146	152	64.9%	56.2%	43.4%
TOTAL	287	297	287	2961	3434	4073	47.0%	36.3%	31.3%
Other Property Crimes									
Mischief Over \$5,000	6	5	11	76	92	123	22.4%	22.8%	23.6%
Mischief Under \$5,000	178	192	205	2894	2564	2809	31.8%	25.4%	21.7%
Other Mischief	84	88	100	1361	1075	1178	83.5%	82.4%	78.6%
Vehicle Damage	202	225	204	3151	3044	3462	8.0%	8.4%	8.9%
Arson	12	20	9	185	242	197	17.8%	22.3%	22.3%
TOTAL	482	530	529	7667	7017	7769	30.8%	26.6%	24.7%
TOTAL PROPERTY CRIMES	3008	3626	4030	41594	41508	56270	23.6%	22.9%	19.2%

Calgary Crime Statistics - CUMULATIVE NUMBERS

DECEMBER 2015

<i>OTHER CRIMINAL CODE</i>	Current Month			Year To Date			Accumulated To Date		
	Number Of Offences			Number Of Offences			Percentage Cleared		
	2013	2014	2015	2013	2014	2015	2013	2014	2015
Vice									
Impede/Communicate	0	0	0	92	48	0	100.0%	100.0%	-
Live on Avails	0	0	0	9	3	0	100.0%	100.0%	-
Bawdy House	0	0	0	7	3	0	100.0%	100.0%	-
Procure/Solicit	1	0	1	36	13	15	94.4%	84.6%	53.3%
TOTAL	1	0	1	144	67	15	98.6%	97.0%	53.3%
Gaming									
Gaming House	0	0	0	1	0	1	100.0%	-	100.0%
Betting	0	0	0	0	0	0	-	-	-
Lotteries/Games	0	0	0	0	0	0	-	-	-
Other	0	0	0	0	1	0	-	100.0%	-
TOTAL	0	0	0	1	1	1	100.0%	100.0%	100.0%
Weapon Related									
Prohibited	9	13	17	129	149	147	100.0%	100.0%	100.0%
Restricted	18	21	24	218	237	294	99.5%	100.0%	100.0%
Explosives	0	0	0	1	0	1	100.0%	-	0.0%
Possess Prohibited	0	0	0	0	0	0	-	-	-
Use Firearm in Offence	1	0	0	7	6	4	100.0%	100.0%	100.0%
FAC Related	5	9	16	85	96	160	100.0%	100.0%	100.0%
Other	34	37	38	533	441	515	98.5%	98.0%	97.9%
TOTAL	67	80	95	973	929	1121	99.1%	99.0%	98.9%
Miscellaneous									
Counterfeiting	6	18	29	130	221	554	3.1%	5.0%	16.4%
Obstruct Peace Officer	41	33	60	512	506	613	98.4%	99.0%	98.7%
Bail Violation/Fail to attend	243	252	280	3223	3462	3540	99.9%	100.0%	100.0%
Fail to comply with Probation	43	44	59	615	592	714	100.0%	100.0%	100.0%
Escape Custody/UAL	13	10	13	192	144	212	100.0%	98.6%	95.3%
Attempt to commit/accessory	3	3	2	32	29	38	96.9%	86.2%	76.3%
Miscellaneous	110	131	116	1501	1752	1744	72.0%	71.7%	70.8%
TOTAL	459	491	559	6205	6706	7415	91.0%	89.3%	86.5%
TOTAL OTHER CRIMINAL CODE	527	571	655	7323	7703	8552	92.2%	90.5%	88.1%
TOTAL CRIMINAL CODE (EXCL. TRAFFIC)	4119	4897	5396	56664	57791	74031	37.4%	37.4%	32.2%

Calgary Crime Statistics - CUMULATIVE NUMBERS

DECEMBER 2015

<i>SELECTED OTHER</i>	Current Month			Year To Date			Accumulated To Date		
	Number Of Offences			Number Of Offences			Percentage Cleared		
	2013	2014	2015	2013	2014	2015	2013	2014	2015
Criminal Code Traffic									
Impaired Causing Death	0	0	0	3	1	4	100.0%	100.0%	100.0%
Impaired Causing Bodily Harm	0	1	0	6	3	7	100.0%	100.0%	100.0%
Impaired > .08	86	85	69	1067	941	753	100.0%	100.0%	100.0%
Impaired Driving	114	116	86	1381	1245	999	99.9%	100.0%	100.0%
Fail/Refuse	32	35	25	371	376	317	100.0%	100.0%	100.0%
Dangerous Causing Death	0	0	0	4	0	4	100.0%	-	100.0%
Dangerous Operation Causing Harm	0	1	1	12	6	12	100.0%	100.0%	100.0%
Dangerous Operation of Motor Vehicle	4	10	15	133	159	151	99.2%	99.4%	98.7%
Impaired Driving (Drugs)	0	1	0	1	2	0	100.0%	100.0%	-
TOTAL	236	249	196	2978	2733	2247	99.9%	100.0%	99.9%
Drugs									
CDSA/NCA/FDA Possession	60	78	63	1051	1090	904	100.0%	100.0%	100.0%
CDSA/NCA/FDA Trafficking	12	11	7	214	269	114	100.0%	100.0%	100.0%
CDSA/NCA/FDA Possession for Purpose	28	41	28	463	460	468	100.0%	100.0%	100.0%
CDSA/NCA Importation/Export	0	0	1	2	0	4	100.0%	-	100.0%
CDSA/NCA Cultivation/Production	1	1	0	35	27	13	100.0%	100.0%	100.0%
CDSA/NCA/FDA Prop./Proc. from Trafficking	0	0	0	0	0	0	-	-	-
TOTAL	101	131	99	1765	1846	1503	100.0%	100.0%	100.0%
Selected Non Criminal Code Incidents									
Accidental/Sudden Death	79	62	65	737	697	723	N/A	N/A	N/A
Missing Persons	180	245	268	2837	2941	3192	N/A	N/A	N/A
Court Order	64	94	103	1234	1184	1412	N/A	N/A	N/A
Domestic Information	1135	1165	1111	13207	12942	13557	N/A	N/A	N/A
Domestic Information Standby	59	81	80	891	873	996	N/A	N/A	N/A
TOTAL	1517	1647	1627	18906	18637	19880	N/A	N/A	N/A
Statutes									
Federal	19	21	21	304	304	289	99.3%	100.0%	99.7%
Provincial	20	40	42	436	449	535	99.5%	98.7%	99.3%
Municipal	4	6	4	89	73	76	100.0%	100.0%	100.0%
TOTAL	43	67	67	829	826	900	99.5%	99.3%	99.4%
TOTAL SELECTED OTHER	1897	2094	1889	24478	24042	24530	99.8 %	99.9%	99.8%