

December

Monthly Statistical

REPORT

2012

Compiled by: Centralized Analysis Unit
Crime and Intelligence Analytical Section
Strategic Services Division
© Calgary Police Service 2013



The Calgary Police Service provides this information in good faith but it provides no warranty, nor accepts any liability arising from any incorrect, incomplete or misleading information.

TABLE OF CONTENTS

	Page
Monthly Highlights - STATIC NUMBER COMPARISON	1
Calgary Crime Statistics – STATIC NUMBERS	
Person Crimes	2
Property Crimes	3
Other Criminal Code/Selected Other/Drug Offences	4
Calgary Disorder Statistics – CALLS FOR SERVICE	5
Calgary Traffic Collisions - CUMULATIVE NUMBERS	6
Calgary Crime Statistics - CUMULATIVE NUMBERS	7

REPORT NOTES

Most of the statistical data in this report are derived from the Police Information Management System (PIMS) and compiled by the Centralized Analysis Unit. The numbers reported may change on a daily basis due to the dynamic nature of offences being reported and cleared. Disorder data is derived from the CAD system and is static.

To a large extent, the data in this report are based on accumulated to date information. **(Except for the Monthly Highlights which are based on static information (i.e.: a snap-shot in time).**

- For offences based on accumulated to date information, the number of offences recorded may be higher than previously reported (i.e. in previous statistical reports) due to late reporting. Although this does not greatly affect the number of occurrences for all offences, for some categories it may be as high as a 30-40% increase. The published data for the current period can therefore be expected to increase as time passes. As a result, readers should exercise caution when making comparisons between historical data and current data (i.e. previous year to this year) as data for the historic period will now include late reported offences, but data for the current period will not at this time. To achieve an effective comparison, current data should be evaluated against the originally published data for the historic period.
- Likewise, late reporting affects the number and percentage of offences cleared. Cases are often cleared months and sometimes years later. Consequently, clearances for previous years may appear to be much higher than those of the present year. Cases “cleared by charge” and those “cleared otherwise” are included in these totals.
- For offences based on “static” or “snap-shot” information, data totals will only reflect the number of offences reported in the original publication. They are not updated. Although late reporting may occur, and offences may continue to be cleared as time passes, these new events are not taken into account when preparing this statistical report.

A single incident may result in multiple offences, with each unique *Criminal Code* violation within the incident being counted as an offence. Furthermore, person crime offences are typically counted by the number of victims. Please note that offences are assigned to the month in which the offence "started", not the month they were reported or cleared. Also note that “attempted” incidents are included in these totals. For a more detailed explanation of the Offence counting procedure, please contact the Centralized Analysis Unit.

Monthly Highlights – STATIC NUMBER COMPARISON

To reduce the impact of late reporting, comments on this page are a comparison between the current month's data and the originally published data from the same month of last year.

DECEMBER 2012

PERSON CRIME

- ◆ Reported **person crimes** for the month of December 2012 decreased 15.7% when compared to December 2011 (509 offences in December 2012 vs. 604 in December 2011). Additionally, person crimes were 15.0% below the five year average for December.
- ◆ Total **robbery** offences in December 2012 decreased 40.7% when compared to December 2011 (51 offences in December 2012 vs. 86 in December 2011); During December 2012 there were:
 - 0 **financial robberies** (compared to 3 in December 2011);
 - 9 **commercial robberies** (compared to 20 in December 2011); and
 - 6 **home invasions** (compared to 7 in December 2011).
- ◆ **Assaults** decreased 12.4% this month (388 offences in December 2012 vs. 443 in December 2011).
- ◆ **Sex offences** decreased 26.7% this month (33 **sex offences** in December 2012 compared to 45 in December 2011).

PROPERTY CRIME

- ◆ Reported **property crimes** this month decreased 10.0% when compared to December 2011 (2407 offences in December 2012 compared to 2673 in December 2011). Property crimes were also below the five year average by 14.0%.
- ◆ **Vehicle theft** (including attempts) increased 11.3% when compared to December 2011 (355 offences in December 2012 vs. 319 in December 2011).
- ◆ **Theft** offences decreased 16.1% this month when compared to December 2011 (1095 offences in December 2012 vs. 1305 in December 2011).
- ◆ **Break and enter** offences this month decreased 1.0% when compared to December 2011 (409 offences this month compared to 413 in December 2011).
 - **Residential break and enter** offences this month decreased 24.7% when compared to December 2011 (171 offences in December 2012 vs. 227 in December 2011); and
 - **Commercial break and enter** offences increased 30.1% this month when compared to December 2011 (177 offences in December 2012 vs. 136 in December 2011).
- ◆ **Fraud related** offences increased by 5.1% this month (124 offences in December 2012 vs. 118 in December 2011).

DISORDER

- ◆ December 2012 decreased 8.3% compared to December 2011 with 469 fewer incidents recorded (5176 incidents in December 2012 compared to 5645 in December 2011). Disorder incidents were slightly higher (+1.3%) than the five year average for December.
- ◆ Overall, physical disorder incidents (abandoned auto, fire and property damage) decreased this month by 5.9% (529 incidents in December 2012 vs. 562 in December 2011) driven primarily by a considerable decrease of **property damage** (55 fewer incidents). In contrast, **abandoned auto** incidents saw a slight increase (+15 incidents) as did **fire** (+7 incidents); however, both event types noted decreases YTD when compared to 2011 YTD volumes.
- ◆ Social disorder incidents decreased 8.6% when compared to December 2011 (4647 incidents in December 2012 vs. 5083 in December 2011). **Suspicious person** and **disturbances** both recorded decreases in December; however, both event types noted large numerical increases YTD. **Unwanted guests** saw an increase compared to December 2011 (+114 incidents) and also noted an increase YTD (8862 incidents in December 2012 vs. 8416 incidents in December 2011).

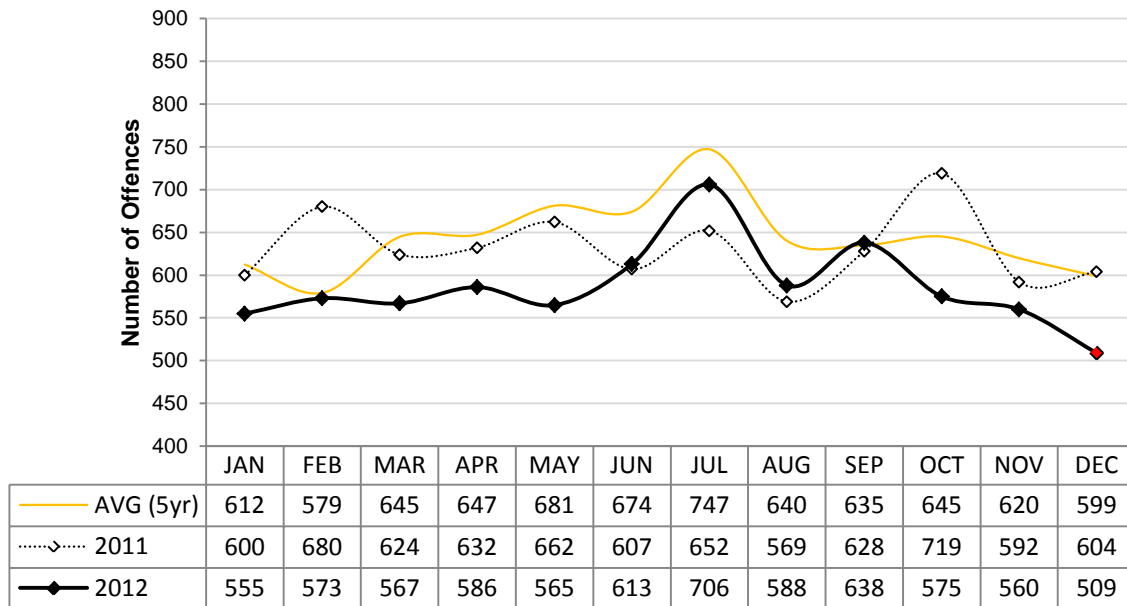
Calgary Person Crime Statistics – STATIC NUMBERS

The static crime numbers on this page are derived from historical Calgary Police Service Monthly Statistical Reports. These statistics are used when writing the Monthly Highlights page in order to make a fair comparison using data which has not been allowed to increase due to late reporting of crime. Using static numbers allows us to compare crime levels at a specific point in time and make an accurate determination of increases or decreases. The cumulative crime numbers (pages 7 – 10) are statistics derived from the CPS Police Information Management System. P.I.M.S. cannot produce static numbers and therefore the cumulative numbers reflect any late reporting of crime. To achieve an effective comparison, current data should be evaluated against the originally published data for the historic period. *Due to the dynamic nature of ongoing homicide investigations these numbers may have been manually updated to reflect the current homicide count. Due to manually updating, it's possible 1 or more homicides may be reflected within the assault category. The homicide counts are provided by the homicide unit.

DECEMBER 2012

	Current Month Number Of Offences			Year To Date Number Of Offences			% Cleared 2012
	2011	2012	% Change (2011-2012)	2011	2012	% Change (2011-2012)	
PERSON CRIMES							
Homicide*	0	0	N/A	9	18	100.0%	61.1%
Other Offences Causing Death	0	0	N/A	2	0	-100.0%	-
Attempted Homicide	1	0	-100.0%	12	11	-8.3%	45.5%
Sex Offences	45	33	-26.7%	765	804	5.1%	32.0%
Robbery:							
<i>Financial</i>	3	0	-100.0%	52	26	-50.0%	65.4%
<i>Commercial</i>	20	9	-55.0%	266	202	-24.1%	44.1%
<i>Person</i>	56	36	-35.7%	651	606	-6.9%	27.9%
<i>Home Invasion</i>	7	6	-14.3%	63	39	-38.1%	23.1%
Total Robbery	86	51	-40.7%	1032	873	-15.4%	32.5%
Assault:							
<i>Level 3 - Aggravated</i>	8	10	25.0%	113	108	-4.4%	69.4%
<i>Level 2 - Weapon/Bodily Harm</i>	124	75	-39.5%	1414	1295	-8.4%	59.0%
<i>Level 1 - Common Assault</i>	279	278	-0.4%	3930	3680	-6.4%	70.4%
<i>Assault Police Officer</i>	29	19	-34.5%	258	238	-7.8%	98.3%
<i>Discharge Firearm with Intent</i>	0	1	N/A	10	13	30.0%	100.0%
<i>Other Assaults</i>	3	5	66.7%	35	29	-17.1%	82.8%
Total Assault	443	388	-12.4%	5760	5363	-6.9%	69.0%
Misc Person Crimes	29	37	27.6%	516	502	-2.7%	64.9%
TOTAL PERSON CRIMES	604	509	-15.7%	8096	7571	-6.5%	60.6%

**Person Crime-Static Numbers
YTD Jan 01 to Dec 31 2012**



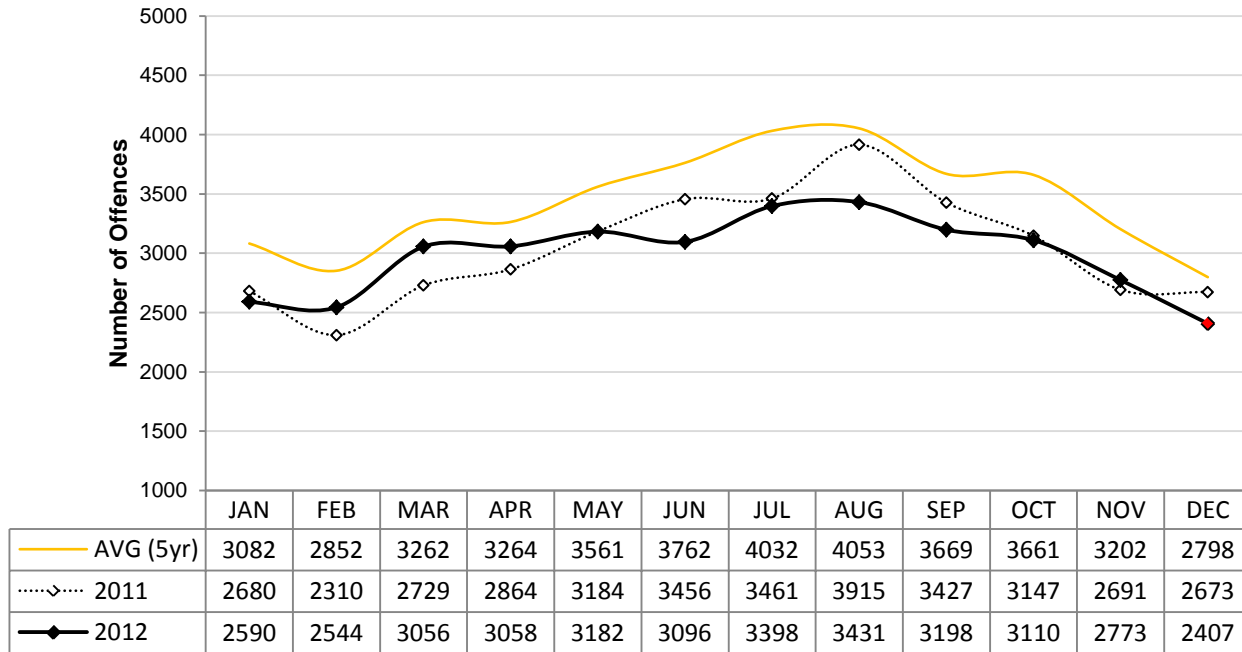
Calgary Property Crime Statistics – STATIC NUMBERS

The static crime numbers on this page are derived from historical Calgary Police Service Monthly Statistical Reports. These statistics are used when writing the Monthly Highlights page in order to make a fair comparison using data which has not been allowed to increase due to late reporting of crime. Using static numbers allows us to compare crime levels at a specific point in time and make an accurate determination of increases or decreases. The cumulative crime numbers (pages 7 – 10) are statistics derived from the CPS Police Information Management System. P.I.M.S. cannot produce static numbers and therefore the cumulative numbers reflect any late reporting of crime. To achieve an effective comparison, current data should be evaluated against the originally published data for the historic period.

DECEMBER 2012

	Current Month Number Of Offences			Year To Date Number Of Offences			% Cleared 2012
	2011	2012	% Change (2011-2012)	2011	2012	% Change (2011-2012)	
PROPERTY CRIMES							
Break and Enter:							
<i>Residential B&E</i>	227	171	-24.7%	2518	2555	1.5%	14.7%
<i>Commercial B&E</i>	136	177	30.1%	2060	2121	3.0%	13.1%
<i>Other B&E</i>	44	58	31.8%	780	862	10.5%	8.7%
<i>Unlawfully in Residence</i>	6	3	-50.0%	62	40	-35.5%	80.0%
Total Break and Enter	413	409	-1.0%	5420	5578	2.9%	13.7%
Theft	1305	1095	-16.1%	20376	19180	-5.9%	25.5%
Vehicle Theft (including attempts)	319	355	11.3%	4185	4441	6.1%	10.8%
Fraud Related	118	124	5.1%	2599	2427	-6.6%	46.3%
Other Property Crimes	518	424	-18.1%	8230	7597	-7.7%	26.2%
TOTAL PROPERTY CRIMES	2673	2407	-10.0%	40810	39223	-3.9%	23.5%

**Property Crime-Static Numbers
YTD Jan 01 to Dec 31 2012**



Calgary Other Crime Statistics – STATIC NUMBERS

The static crime numbers on this page are derived from historical Calgary Police Service Monthly Statistical Reports. These statistics are used when writing the Monthly Highlights page in order to make a fair comparison using data which has not been allowed to increase due to late reporting of crime. Using static numbers allows us to compare crime levels at a specific point in time and make an accurate determination of increases or decreases. The cumulative crime numbers (pages 7 – 10) are statistics derived from the CPS Police Information Management System. P.I.M.S. cannot produce static numbers and therefore the cumulative numbers reflect any late reporting of crime. To achieve an effective comparison, current data should be evaluated against the originally published data for the historic period.

DECEMBER 2012

	Current Month Number Of Offences			Year To Date Number Of Offences			% Cleared 2012
	2011	2012	% Change (2011-2012)	2011	2012	% Change (2011-2012)	
OTHER CRIMINAL CODE							
Vice	0	0	N/A	131	66	-49.6%	98.5%
Gaming	0	0	N/A	1	1	0.0%	100.0%
Weapon Related	68	80	17.6%	1185	1059	-10.6%	99.4%
Misc	517	433	-16.2%	6949	6428	-7.5%	89.9%
TOTAL OTHER CRIMINAL CODE	585	513	-12.3%	8266	7554	-8.6%	91.3%
TOTAL OVERALL CRIMINAL CODE (excluding traffic)	3862	3429	-11.2%	57172	54348	-4.9%	37.1%
SELECTED OTHER							
Criminal Code Traffic	262	267	1.9%	3542	3462	-2.3%	100.0%
Drugs	115	104	-9.6%	1801	1760	-2.3%	100.0%
Selected Non Criminal Code:							
<i>Accidental/Sudden Death</i>	67	77	14.9%	653	745	14.1%	N/A
<i>Missing Persons</i>	258	193	-25.2%	3615	3163	-12.5%	N/A
<i>Court Order</i>	104	77	-26.0%	1177	1105	-6.1%	N/A
<i>Domestic Information</i>	1071	1094	2.1%	12454	12667	1.7%	N/A
<i>Domestic Information Standby</i>	66	67	1.5%	856	876	2.3%	N/A
Total Selected Non Criminal Code	1566	1508	-3.7%	18755	18556	-1.1%	N/A
Statutes (Federal/Provincial/Municipal)	64	74	15.6%	988	942	-4.7%	99.4%
TOTAL SELECTED OTHER	2007	1953	-2.7%	25086	24720	-1.5%	97.4%

Number of Drug Offences Year To Date

	2008	2009	2010	2011	2012	Trend
Demand	868	926	1102	950	1013	
Supply	811	1378	1208	851	747	
Total	1679	2304	2310	1801	1760	
	Drug Type					
Cocaine/Crack	771	1185	835	510	576	
Cannabis	796	971	1290	1139	1021	
All Other Drugs	112	148	185	152	163	
Total	1679	2304	2310	1801	1760	

*Note-drug offences in this table are cumulative

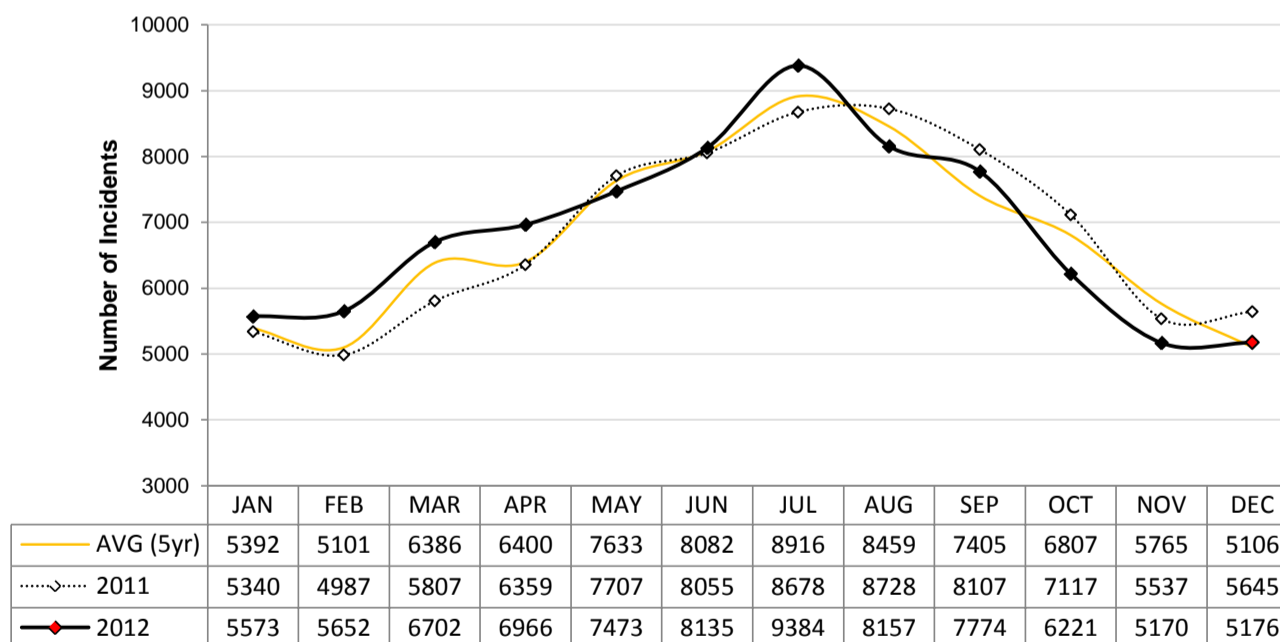
Calgary Disorder Statistics – CALLS FOR SERVICE

In addition to monitoring crime levels, the Calgary Police Service uses a range of incident types to record levels of "Social & Physical Disorder". The incident types selected for this disorder index are those which can have a negative impact on citizens' quality of life and perception of safety, particularly in public places. These incidents do not tend to be represented well in "traditional" crime statistics which have a propensity to focus more on person and property crime.

DECEMBER 2012 PUBLIC GENERATED CALLS FOR SERVICE

	Current Month				Year To Date			
	2011	2012	N Change (2011 to 2012)	% Change (2011-2012)	2011	2012	N Change (2011 to 2012)	% Change (2011-2012)
SOCIAL DISORDER								
Disturbance	746	680	-66	-8.8%	9308	10116	808	8.7%
Drugs	156	122	-34	-21.8%	2229	2344	115	5.2%
Indecent Act	24	28	4	16.7%	554	591	37	6.7%
Intoxicated Person	493	351	-142	-28.8%	5712	5663	-49	-0.9%
Juvenile Complaint	109	46	-63	-57.8%	2487	1945	-542	-21.8%
Landlord Tenant	167	164	-3	-1.8%	2380	2286	-94	-3.9%
Mental Health Concern	181	190	9	5.0%	2289	2475	186	8.1%
Neighbour Dispute	118	114	-4	-3.4%	1931	1915	-16	-0.8%
Noise Complaint	437	372	-65	-14.9%	7006	6688	-318	-4.5%
Party Complaint	116	82	-34	-29.3%	2600	2492	-108	-4.2%
Possible Gunshots	35	25	-10	-28.6%	748	765	17	2.3%
Prostitution	12	10	-2	-16.7%	492	370	-122	-24.8%
Prowler	22	28	6	27.3%	398	456	58	14.6%
Speeder	25	19	-6	-24.0%	633	676	43	6.8%
Suspicious Auto	557	536	-21	-3.8%	8319	8005	-314	-3.8%
Suspicious Person	929	835	-94	-10.1%	14171	14534	363	2.6%
Threats	228	203	-25	-11.0%	3084	3033	-51	-1.7%
Unwanted Guest	728	842	114	15.7%	8416	8862	446	5.3%
TOTAL SOCIAL DISORDER	5083	4647	-436	-8.6%	72757	73216	459	0.6%
PHYSICAL DISORDER								
Abandoned Auto	23	38	15	65.2%	368	296	-72	-19.6%
Fire	122	129	7	5.7%	2122	2047	-75	-3.5%
Property Damage*	417	362	-55	-13.2%	6820	6824	4	0.1%
TOTAL PHYSICAL DISORDER	562	529	-33	-5.9%	9310	9167	-143	-1.5%
TOTAL DISORDER	5645	5176	-469	-8.3%	82067	82383	316	0.4%

**Public Generated Disorder Calls for Service
YTD Jan 01 to Dec 31 2012**



***Data Notes:**

- 1) Dispatched, Advised, Call Back and Web Calls are included.
- 2) 130 calls in current month were reported at district front counters (walkins) and are excluded from this dataset.
- 3) Current Month: In addition to the 5,176 public generated calls, officers proactively generated 1,295 calls (these are not included in this report).
- 4) *The majority of Property Damage calls result in criminal code reports which are counted under Other Property Crimes in this report.

Calgary Traffic Collisions – CUMULATIVE NUMBERS

DECEMBER 2012

	Current Month # of Collisions			Year To Date # of Collisions			Year To Date Rates (per 100,000 population)		
	2010	2011	2012	2010	2011	2012	2010	2011	2012
Fatal Collisions	0	3	5	23	20	32	2.1	1.8	2.9
Injury Collisions	251	224	217	2498	2496	2664	233.1	228.8	237.8
Property Damage Collisions	4695	3284	2038	44815	38926	36108	4182.4	3568.1	3223.3
E-Collision Reports*	25	38	2412	277	336	3770	-	30.8	336.5
Total Collisions	4926	3549	4672	47336	41778	42574	4417.7	3829.6	3800.5
<i>Parking Lot Collisions</i>	1113	694	242	12372	8630	7375	1154.6	791.1	658.3
Total Reportable Collisions	3813	2855	4430	34964	33148	35199	3263.0	3038.5	3142.1

NOTE: Total Reportable Collisions exclude collisions along private roadways or public parking lots.

The number of reported traffic collisions may continue to increase over time. Due to data collection and reporting methods, totals for the current month may not be comparable to previous years.

* E-Collision reporting is a new data system which became operational in July 2009. At the time of printing this report it was not possible to separate collisions based on level of severity or to determine whether they occurred in a parking lot. Therefore, as E-Collision reports are completed and entered into the records management system, the determination of whether or not they are reportable is made, and such, they are removed from the E-Collision total and reclassified based on level of severity.

Top Collision Locations and Cause of Events

Number of Collisions	Location	Primary Cause of Event	Primary Direction of Travel
33	Deerfoot TR & Glenmore TR SE	Rear End	S
18	Deerfoot TR & 17 AV SE	Rear End	S
17	Crowchild TR & Glenmore TR SW	Rear End	E
15	Deerfoot TR & 16 AV NE	Rear End	S
15	Deerfoot TR & Peigan TR SE	Rear End	E
15	Deerfoot TR & Southland DR SE	Rear End	S
13	Deerfoot TR & Anderson RD SE	Rear End	S
13	Glenmore TR SW & 14 ST SW	Rear End	N
13	Deerfoot TR & Beddington TR NE	Struck Object	E
12	Crowchild TR & Shaganappi TR NW	Struck Object	E
12	Deerfoot TR & Memorial DR E	Rear End	S
12	Deerfoot TR & 64 AV NE	Left Turn Across Path / Rear End / Sideswipe	N

When interpreting this data, it is imperative to consider that these figures represent only the number of collisions and they do not account for associated traffic volumes, weather conditions, types of collisions, driver experience, or any other variables which may or may not be significant factors. The locations denoted might be associated with intersections, on/off ramps, or mid-block locations, which are close but not necessarily at the exact specified locations. Collisions occurring on private properties, such as shopping mall parking lots have been excluded from the data in order to strictly assess intersection related collisions.

NOTE: This table excludes reports made through the E-Collision reporting system.

Calgary Crime Statistics - CUMULATIVE NUMBERS

DECEMBER 2012

PERSON CRIMES	Current Month			Year To Date			Accumulated To Date		
	Number Of Offences			Number Of Offences			Percentage Cleared		
	2010	2011	2012	2010	2011	2012	2010	2011	2012
Homicide									
1st Degree	0	0	0	5	5	6	60.0%	60.0%	50.0%
2nd Degree	0	1	0	8	5	7	87.5%	100.0%	85.7%
Manslaughter	0	0	0	1	0	2	0.0%	-	100.0%
Infanticide	0	0	0	0	0	0	-	-	-
TOTAL	0	1	0	14	10	18	71.4%	80.0%	73.3%
Other Offences Causing Death									
Criminal Negligence	0	0	0	0	2	0	-	100.0%	-
Other Offences Causing Death	0	0	0	0	0	0	-	-	-
TOTAL	0	0	0	0	2	0	-	100.0%	-
Attempted Homicide									
Attempted Murder	1	1	0	14	12	11	57.1%	50.0%	45.5%
Conspiracy To Commit	0	0	0	0	0	0	-	-	-
TOTAL	1	1	0	14	12	11	57.1%	50.0%	45.5%
Sex Offences									
Level 3 Aggravated Sexual Assault	0	0	0	6	4	0	66.7%	100.0%	-
Level 2 Weapon/Threat/Bodily Harm	0	0	1	9	11	3	66.7%	72.7%	33.3%
Level 1 Sexual Assault	43	47	27	558	559	581	34.2%	32.0%	24.3%
Indecent Acts	7	8	3	223	140	131	38.1%	37.1%	51.1%
Other	6	10	2	104	99	89	64.4%	48.5%	53.9%
TOTAL	56	65	33	900	813	804	39.2%	35.8%	32.0%
Robbery									
Financial	0	3	0	31	52	26	74.2%	63.5%	65.4%
Commercial	43	20	9	305	266	202	52.8%	45.5%	44.1%
Person	47	61	36	798	661	606	33.5%	32.7%	27.9%
Home Invasion	10	7	6	86	65	39	32.6%	26.2%	23.1%
Robbery of Firearm	0	0	0	0	0	0	-	-	-
TOTAL	100	91	51	1220	1044	873	39.3%	37.1%	32.5%
Assault									
Level 3 - Aggravated	11	8	10	101	114	108	81.2%	68.4%	69.4%
Level 2 - Weapon/Bodily Harm	109	129	75	1543	1433	1295	71.2%	64.8%	59.0%
Level 1 - Common Assault	322	293	278	4106	3970	3680	77.5%	75.3%	70.4%
Assault Police Officer	36	33	19	365	263	238	100.0%	98.1%	98.3%
Discharge Firearm with Intent	6	0	1	11	11	13	63.6%	81.8%	100.0%
Other Assaults	3	4	5	58	37	29	87.9%	89.2%	82.8%
TOTAL	487	467	388	6184	5828	5363	77.4%	73.7%	69.0%
Miscellaneous Person Crimes									
Kidnapping/Abduction	1	2	2	24	32	30	58.3%	46.9%	46.7%
Forcible Confinement	9	14	14	166	135	125	83.1%	76.3%	77.6%
Extortion	1	3	2	24	41	33	50.0%	53.7%	72.7%
Criminal Harassment	33	18	18	325	294	274	71.4%	69.4%	65.0%
Indecent/Harassing Calls	7	2	1	75	45	40	41.3%	35.6%	32.5%
TOTAL	51	39	37	614	547	502	69.5%	65.8%	64.9%
TOTAL PERSON CRIMES	695	664	509	8946	8256	7571	67.8%	64.8%	60.6%

Calgary Crime Statistics - CUMULATIVE NUMBERS

DECEMBER 2012

PROPERTY CRIMES	Current Month			Year To Date			Accumulated To Date		
	Number Of Offences			Number Of Offences			Percentage Cleared		
	2010	2011	2012	2010	2011	2012	2010	2011	2012
Break and Enter									
Residential	204	242	171	2841	2554	2554	22.1%	13.7%	14.7%
Commercial	189	149	177	3143	2093	2121	21.3%	16.0%	13.1%
Other B&E	44	48	58	809	791	862	11.6%	6.6%	8.7%
Unlawfully in Residence	3	6	3	57	62	40	73.7%	85.5%	80.0%
B&E Firearms	0	0	0	0	0	1	-	-	100.0%
TOTAL	440	445	409	6850	5500	5578	20.9%	14.3%	13.7%
Theft									
Theft Over	61	18	15	611	373	231	11.1%	14.2%	16.9%
Theft Under	466	469	368	6564	6620	6099	14.1%	13.9%	12.1%
Possession Stolen Property	75	61	57	990	946	929	100.0%	99.6%	100.0%
From Vehicle Over	6	3	6	99	107	115	6.1%	1.9%	1.7%
From Vehicle Under	525	521	388	8263	8403	8060	5.5%	5.1%	3.9%
Shoptlift Over	1	0	0	10	12	10	50.0%	50.0%	60.0%
Shoptlift Under	347	347	261	4317	4256	3736	81.6%	83.1%	77.2%
TOTAL	1481	1419	1095	20854	20717	19180	28.6%	26.1%	21.9%
Vehicle Theft									
Theft Over	176	297	314	2204	3178	3807	13.3%	12.3%	10.1%
Theft Under	133	35	35	1877	796	499	12.7%	14.8%	18.2%
Attempted	29	22	6	544	272	135	3.7%	5.5%	1.5%
TOTAL	338	354	355	4625	4246	4441	11.9%	12.3%	10.8%
Fraud Related									
False Pretences	3	2	0	38	28	30	76.3%	60.7%	40.0%
Forgery/Uttering	26	22	17	393	355	265	75.1%	73.8%	66.4%
Forgery-Credit Card	23	21	7	363	367	271	43.5%	39.0%	32.1%
Impersonation	26	30	19	265	343	275	65.7%	67.6%	60.4%
Food/Lodging/Transportation	24	18	12	297	247	223	61.3%	64.0%	62.8%
Defraud Person (Under/Over)	99	107	64	1430	1372	1224	47.1%	46.2%	37.2%
Other Fraud	30	13	5	248	242	139	56.9%	71.5%	62.6%
TOTAL	231	213	124	3034	2954	2427	54.4%	54.8%	46.3%
Other Property Crimes									
Mischief Over \$5,000	4	8	3	55	68	67	34.5%	30.9%	22.4%
Mischief Under \$5,000	182	224	192	2720	3085	2873	26.7%	31.5%	24.2%
Other Mischief	88	119	71	1351	1491	1146	84.0%	86.2%	83.2%
Vehicle Damage	250	227	152	4406	3666	3307	9.3%	9.4%	8.6%
Arson	10	7	6	224	188	204	17.9%	11.7%	18.6%
TOTAL	534	585	424	8756	8498	7597	26.6%	31.1%	26.2%
TOTAL PROPERTY CRIMES	3024	3016	2407	44119	41915	39223	27.1%	26.2%	21.8%

Calgary Crime Statistics - CUMULATIVE NUMBERS

DECEMBER 2012

OTHER CRIMINAL CODE	Current Month Number Of Offences			Year To Date Number Of Offences			Accumulated To Date Percentage Cleared		
	2010	2011	2012	2010	2011	2012	2010	2011	2012
Vice									
Impede/Communicate	0	0	0	190	103	62	100.0%	100.0%	100.0%
Live on Avails	0	0	0	3	8	1	100.0%	87.5%	100.0%
Bawdy House	0	1	0	24	11	1	100.0%	100.0%	100.0%
Procure/Solicit	2	0	0	12	14	2	100.0%	92.9%	50.0%
TOTAL	2	1	0	229	136	66	100.0%	98.5%	98.5%
Gaming									
Gaming House	0	0	0	0	0	0	-	-	-
Betting	0	0	0	0	0	0	-	-	-
Lotteries/Games	0	0	0	0	0	0	-	-	-
Other	0	0	0	5	1	1	100.0%	0.0%	100.0%
TOTAL	0	0	0	5	1	1	100.0%	0.0%	100.0%
Weapon Related									
Prohibited	9	9	14	218	180	170	100.0%	100.0%	100.0%
Restricted	21	15	17	330	226	225	100.0%	99.6%	99.6%
Explosives	1	0	0	2	4	1	100.0%	100.0%	100.0%
Possess Prohibited	0	0	0	0	0	0	-	-	-
Use Firearm in Offence	2	0	2	14	5	7	92.9%	100.0%	100.0%
FAC Related	4	4	7	105	83	77	100.0%	100.0%	100.0%
Other	63	44	40	978	717	579	99.4%	98.5%	99.1%
TOTAL	100	72	80	1647	1215	1059	99.6%	99.0%	99.4%
Miscellaneous									
Counterfeiting	21	12	17	582	366	242	8.1%	6.8%	5.8%
Obstruct Peace Officer	56	54	50	782	643	603	99.2%	99.5%	99.3%
Bail Violation/Fail to attend	249	301	186	3327	3306	3186	99.9%	100.0%	100.0%
Fail to comply with Probation	49	39	72	811	755	676	100.0%	100.0%	100.0%
Escape Custody/UAL	17	17	17	217	184	218	98.2%	98.9%	98.6%
Attempt to commit/accessory	4	6	0	58	37	36	94.8%	97.3%	88.9%
Miscellaneous	158	138	91	1970	1867	1467	77.6%	78.6%	72.1%
TOTAL	554	567	433	7747	7158	6428	87.2%	89.6%	89.9%
TOTAL OTHER CRIMINAL CODE	656	640	513	9628	8510	7554	89.6%	91.0%	91.3%

Calgary Crime Statistics - CUMULATIVE NUMBERS

DECEMBER 2012

SELECTED OTHER	Current Month			Year To Date			Accumulated To Date		
	Number Of Offences			Number Of Offences			Percentage Cleared		
	2010	2011	2012	2010	2011	2012	2010	2011	2012
Criminal Code Traffic									
Impaired Causing Death	0	0	0	0	3	3	-	100.0%	100.0%
Impaired Causing Bodily Harm	0	0	1	14	9	10	100.0%	88.9%	100.0%
Impaired > .08	99	100	99	1292	1270	1263	100.0%	99.9%	100.0%
Impaired Driving	128	129	121	1629	1657	1613	99.9%	100.0%	100.0%
Fail/Refuse	32	37	39	356	458	433	100.0%	100.0%	100.0%
Dangerous Causing Death	0	0	0	0	4	6	-	100.0%	100.0%
Dangerous Operation Causing Harm	1	0	1	11	16	7	100.0%	87.5%	100.0%
Dangerous Operation of Motor Vehicle	10	9	6	165	149	127	100.0%	98.7%	99.2%
Impaired Driving (Drugs)	0	1	0	4	5	0	100.0%	100.0%	-
TOTAL	270	276	267	3471	3571	3462	100.0%	99.8%	100.0%
Drugs									
CDSA/NCA/FDA Possession	91	75	74	1102	954	1013	100.0%	99.9%	100.0%
CDSA/NCA/FDA Trafficking	18	14	9	473	297	292	100.0%	100.0%	100.0%
CDSA/NCA/FDA Possession for Purpose	33	35	20	659	512	400	100.0%	99.8%	100.0%
CDSA/NCA Importation/Export	0	0	0	0	0	5	-	-	100.0%
CDSA/NCA Cultivation/Production	5	5	1	76	80	50	100.0%	100.0%	100.0%
CDSA/NCA/FDA Prop./Proc. from Trafficking	0	0	0	0	0	0	-	-	-
TOTAL	147	129	104	2310	1843	1760	100.0%	99.9%	100.0%
Selected Non Criminal Code Incidents									
Accidental/Sudden Death	51	70	77	658	656	745	0.0%	0.0%	0.0%
Missing Persons	267	264	193	3267	3632	3163	0.0%	0.0%	0.0%
Court Order	83	106	77	942	1184	1105	0.0%	0.0%	0.0%
Domestic Information	1053	1108	1094	12317	12565	12667	0.0%	0.0%	0.0%
Domestic Information Standby	72	69	67	784	864	876	0.0%	0.0%	0.0%
TOTAL	1526	1617	1508	17968	18901	18556	0.0%	0.0%	0.0%
Statutes									
Federal	28	29	32	425	444	392	100.0%	100.0%	100.0%
Provincial	27	30	32	577	409	439	99.0%	99.3%	99.1%
Municipal	8	9	10	258	163	111	98.8%	100.0%	98.2%
TOTAL	63	68	74	1260	1016	942	99.3%	99.7%	99.4%
TOTAL SELECTED OTHER	2006	2090	1953	25009	25331	24720	28.1%	25.3%	24.9%