

November Monthly Statistical REPORT 2012

Compiled by: Centralized Analysis Unit
Crime and Intelligence Analytical Section
Strategic Services Division
© Calgary Police Service 2013



The Calgary Police Service provides this information in good faith but it provides no warranty, nor accepts any liability arising from any incorrect, incomplete or misleading information.

TABLE OF CONTENTS

	Page
Monthly Highlights - STATIC NUMBER COMPARISON	1
Calgary Crime Statistics – STATIC NUMBERS	
Person Crimes	2
Property Crimes	3
Other Criminal Code/Selected Other/Drug Offences	4
Calgary Disorder Statistics – CALLS FOR SERVICE	5
Calgary Traffic Collisions - CUMULATIVE NUMBERS	6
Calgary Crime Statistics - CUMULATIVE NUMBERS	7

REPORT NOTES

Most of the statistical data in this report are derived from the Police Information Management System (PIMS) and compiled by the Centralized Analysis Unit. The numbers reported may change on a daily basis due to the dynamic nature of offences being reported and cleared. Disorder data is derived from the CAD system and is static.

To a large extent, the data in this report are based on accumulated to date information. **(Except for the Monthly Highlights which are based on static information (i.e.: a snap-shot in time).**

- For offences based on accumulated to date information, the number of offences recorded may be higher than previously reported (i.e. in previous statistical reports) due to late reporting. Although this does not greatly affect the number of occurrences for all offences, for some categories it may be as high as a 30-40% increase. The published data for the current period can therefore be expected to increase as time passes. As a result, readers should exercise caution when making comparisons between historical data and current data (i.e. previous year to this year) as data for the historic period will now include late reported offences, but data for the current period will not at this time. To achieve an effective comparison, current data should be evaluated against the originally published data for the historic period.
- Likewise, late reporting affects the number and percentage of offences cleared. Cases are often cleared months and sometimes years later. Consequently, clearances for previous years may appear to be much higher than those of the present year. Cases “cleared by charge” and those “cleared otherwise” are included in these totals.
- For offences based on “static” or “snap-shot” information, data totals will only reflect the number of offences reported in the original publication. They are not updated. Although late reporting may occur, and offences may continue to be cleared as time passes, these new events are not taken into account when preparing this statistical report.

A single incident may result in multiple offences, with each unique *Criminal Code* violation within the incident being counted as an offence. Furthermore, person crime offences are typically counted by the number of victims. Please note that offences are assigned to the month in which the offence "started", not the month they were reported or cleared. Also note that “attempted” incidents are included in these totals. For a more detailed explanation of the Offence counting procedure, please contact the Centralized Analysis Unit.

Monthly Highlights – STATIC NUMBER COMPARISON

To reduce the impact of late reporting, comments on this page are a comparison between the current month's data and the originally published data from the same month of last year.

NOVEMBER 2012

PERSON CRIME

- ◆ Reported **person crimes** for the month of November 2012 decreased 5.4% when compared to November 2011 (560 offences in November 2012 vs. 592 in November 2011). Additionally, person crimes decreased over the five year average for November by 9.6%.
- ◆ Total **robbery** offences for the month of November 2012 decreased 23.2% when compared to November 2011 (63 offences in November 2012 vs. 82 in November 2011); During November 2012 there were:
 - 2 **financial robberies** (compared to 8 in November 2011);
 - 15 **commercial robberies** (compared to 36 in November 2011); and
 - 2 **home invasions** (compared to 3 in November 2011).
- ◆ **Assaults** decreased 3.5% this month (410 offences in November 2012 vs. 425 in November 2011).
- ◆ **Sex offences** increased 3.6% this month (57 **sex offences** in November 2012 compared to 55 in November 2011).

PROPERTY CRIME

- ◆ Reported **property crimes** this month increased 3.0% when compared to November 2011 (2773 offences in November 2012 compared to 2691 in November 2011). Property crimes were also well below the five year average by 13.4%.
- ◆ **Vehicle theft** (including attempts) increased 24.3% when compared to November 2011 (353 offences in November 2012 vs. 284 in November 2011).
- ◆ **Theft** offences decreased 4.8% this month when compared to November 2011 (1356 offences in November 2012 vs. 1424 in November 2011).
- ◆ **Break and enter** offences this month increased 35.1% when compared to November 2011 (481 offences this month compared to 356 in November 2011).
 - **Residential break and enter** offences this month increased 15.9% when compared to November 2011 (204 offences in November 2012 vs. 176 in November 2011); and
 - **Commercial break and enter** offences increased 56.4% this month when compared to November 2011 (183 offences in November 2012 vs. 117 in November 2011).
- ◆ **Fraud related** offences increased 12.4% this month (127 offences in November 2012 vs. 113 in November 2011).

DISORDER

- ◆ November 2012 decreased 6.6% compared to November 2011 with 367 fewer incidents recorded (5170 incidents in November 2012 compared to 5537 in November 2011). Disorder incidents were 10.3% below the five year average for November.
- ◆ Overall, physical disorder incidents (abandoned auto, fire and property damage) decreased this month by 14.8% (593 incidents in November 2012 vs. 696 in November 2011). All physical disorder event types noted decreases compared to November 2011 as well as to each of their respective five year averages for November.
- ◆ Social disorder incidents decreased 5.5% when compared to November 2011 (4577 incidents in November 2012 vs. 4841 in November 2011). **Suspicious persons** saw the most notable decrease (836 this month compared to 900 in November 2011); however, year-to-date figures reflect a 3.5% increase (+457 incidents above YTD volume in November 2011). **Intoxicated persons** recorded the most notable increase (377 incidents this month compared to 355 in November 2011).

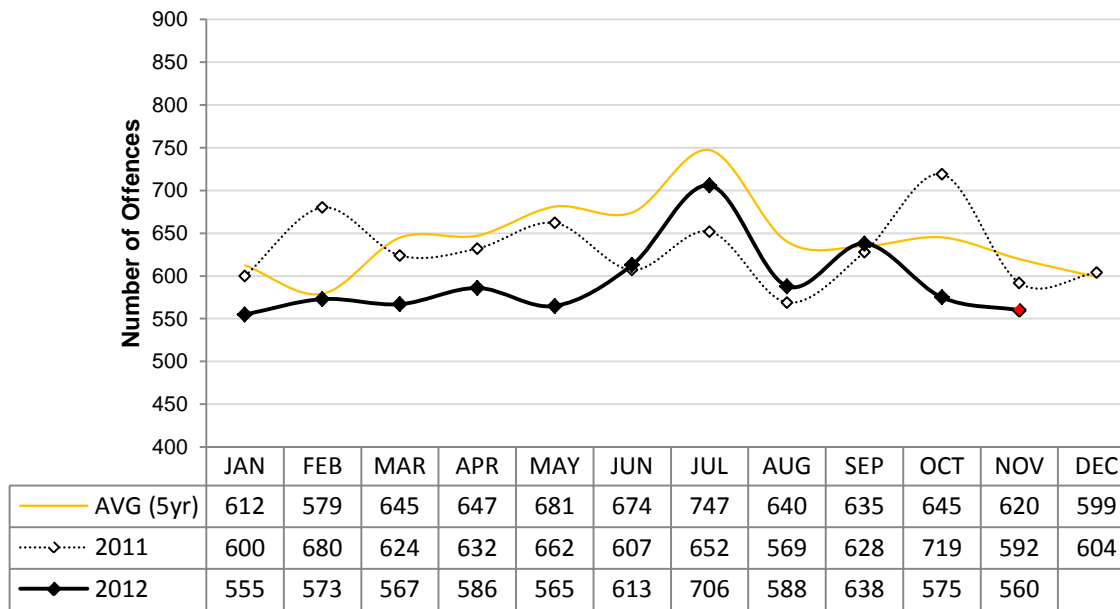
Calgary Person Crime Statistics – STATIC NUMBERS

The static crime numbers on this page are derived from historical Calgary Police Service Monthly Statistical Reports. These statistics are used when writing the Monthly Highlights page in order to make a fair comparison using data which has not been allowed to increase due to late reporting of crime. Using static numbers allows us to compare crime levels at a specific point in time and make an accurate determination of increases or decreases. The cumulative crime numbers (pages 7 – 10) are statistics derived from the CPS Police Information Management System. P.I.M.S. cannot produce static numbers and therefore the cumulative numbers reflect any late reporting of crime. To achieve an effective comparison, current data should be evaluated against the originally published data for the historic period. *Due to the dynamic nature of ongoing homicide investigations these numbers may have been manually updated to reflect the current homicide count. Due to manually updating, it's possible 1 or more homicides may be reflected within the assault category. The homicide counts are provided by the homicide unit.

NOVEMBER 2012

	Current Month Number Of Offences			Year To Date Number Of Offences			% Cleared 2012
	2011	2012	% Change (2011-2012)	2011	2012	% Change (2011-2012)	
PERSON CRIMES							
Homicide*	1	1	0.0%	8	18	125.0%	55.6%
Other Offences Causing Death	0	0	N/A	2	0	-100.0%	-
Attempted Homicide	0	0	N/A	11	10	-9.1%	50.0%
Sex Offences	55	57	3.6%	697	754	8.2%	31.4%
Robbery:							
<i>Financial</i>	8	2	-75.0%	49	26	-46.9%	65.4%
<i>Commercial</i>	36	15	-58.3%	246	193	-21.5%	43.0%
<i>Person</i>	35	44	25.7%	592	568	-4.1%	28.3%
<i>Home Invasion</i>	3	2	-33.3%	53	33	-37.7%	24.2%
Total Robbery	82	63	-23.2%	940	820	-12.8%	32.8%
Assault:							
<i>Level 3 - Aggravated</i>	6	8	33.3%	104	97	-6.7%	69.1%
<i>Level 2 - Weapon/Bodily Harm</i>	63	88	39.7%	1280	1217	-4.9%	58.6%
<i>Level 1 - Common Assault</i>	321	302	-5.9%	3618	3383	-6.5%	69.7%
<i>Assault Police Officer</i>	10	10	0.0%	229	218	-4.8%	99.1%
<i>Discharge Firearm with Intent</i>	3	0	-100.0%	10	12	20.0%	100.0%
<i>Other Assaults</i>	2	2	0.0%	32	24	-25.0%	79.2%
Total Assault	425	410	-3.5%	5273	4951	-6.1%	68.4%
Misc Person Crimes	29	29	0.0%	467	457	-2.1%	64.3%
TOTAL PERSON CRIMES	592	560	-5.4%	7398	7010	-5.2%	60.0%

**Person Crime-Static Numbers
YTD Jan 01 to Nov 30 2012**



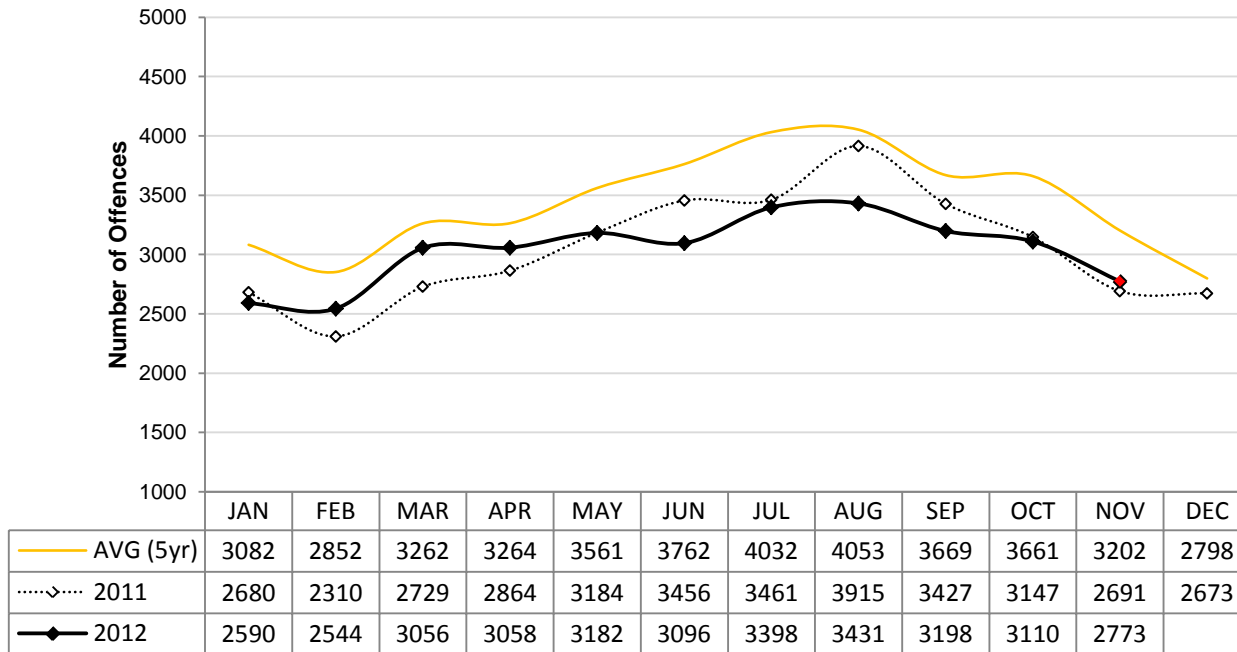
Calgary Property Crime Statistics – STATIC NUMBERS

The static crime numbers on this page are derived from historical Calgary Police Service Monthly Statistical Reports. These statistics are used when writing the Monthly Highlights page in order to make a fair comparison using data which has not been allowed to increase due to late reporting of crime. Using static numbers allows us to compare crime levels at a specific point in time and make an accurate determination of increases or decreases. The cumulative crime numbers (pages 7 – 10) are statistics derived from the CPS Police Information Management System. P.I.M.S. cannot produce static numbers and therefore the cumulative numbers reflect any late reporting of crime. To achieve an effective comparison, current data should be evaluated against the originally published data for the historic period.

NOVEMBER 2012

	Current Month Number Of Offences			Year To Date Number Of Offences			% Cleared 2012
	2011	2012	% Change (2011-2012)	2011	2012	% Change (2011-2012)	
PROPERTY CRIMES							
Break and Enter:							
<i>Residential B&E</i>	176	204	15.9%	2278	2374	4.2%	14.9%
<i>Commercial B&E</i>	117	183	56.4%	1899	1901	0.1%	11.5%
<i>Other B&E</i>	60	91	51.7%	730	796	9.0%	9.3%
<i>Unlawfully in Residence</i>	3	3	0.0%	56	38	-32.1%	81.6%
Total Break and Enter	356	481	35.1%	4963	5109	2.9%	13.3%
Theft	1424	1356	-4.8%	18834	17954	-4.7%	21.7%
Vehicle Theft (including attempts)	284	353	24.3%	3828	4063	6.1%	10.7%
Fraud Related	113	127	12.4%	2367	2197	-7.2%	46.2%
Other Property Crimes	514	456	-11.3%	7620	7132	-6.4%	25.9%
TOTAL PROPERTY CRIMES	2691	2773	3.0%	37612	36455	-3.1%	21.6%

**Property Crime-Static Numbers
YTD Jan 01 to Nov 30 2012**



Calgary Other Crime Statistics – STATIC NUMBERS

The static crime numbers on this page are derived from historical Calgary Police Service Monthly Statistical Reports. These statistics are used when writing the Monthly Highlights page in order to make a fair comparison using data which has not been allowed to increase due to late reporting of crime. Using static numbers allows us to compare crime levels at a specific point in time and make an accurate determination of increases or decreases. The cumulative crime numbers (pages 7 – 10) are statistics derived from the CPS Police Information Management System. P.I.M.S. cannot produce static numbers and therefore the cumulative numbers reflect any late reporting of crime. To achieve an effective comparison, current data should be evaluated against the originally published data for the historic period.

NOVEMBER 2012

	Current Month Number Of Offences			Year To Date Number Of Offences			% Cleared 2012
	2011	2012	% Change (2011-2012)	2011	2012	% Change (2011-2012)	
OTHER CRIMINAL CODE							
Vice	0	1	N/A	131	66	-49.6%	98.5%
Gaming	0	0	N/A	1	1	0.0%	100.0%
Weapon Related	83	71	-14.5%	1107	971	-12.3%	99.4%
Misc	468	522	11.5%	6370	5947	-6.6%	89.8%
TOTAL OTHER CRIMINAL CODE	551	594	7.8%	7609	6985	-8.2%	91.2%
TOTAL OVERALL CRIMINAL CODE (excluding traffic)	3834	3927	2.4%	52619	50450	-4.1%	36.8%
SELECTED OTHER							
Criminal Code Traffic	277	253	-8.7%	3266	3174	-2.8%	99.9%
Drugs	111	126	13.5%	1667	1652	-0.9%	100.0%
Selected Non Criminal Code:							
Accidental/Sudden Death	58	69	19.0%	582	667	14.6%	N/A
Missing Persons	277	253	-8.7%	3349	2963	-11.5%	N/A
Court Order	96	106	10.4%	1073	1027	-4.3%	N/A
Domestic Information	931	1024	10.0%	11305	11537	2.1%	N/A
Domestic Information Standby	62	62	0.0%	783	808	3.2%	N/A
Total Selected Non Criminal Code	1424	1514	6.3%	17092	17002	-0.5%	N/A
Statutes (Federal/Provincial/Municipal)	73	59	-19.2%	909	861	-5.3%	99.4%
TOTAL SELECTED OTHER	1885	1952	3.6%	22934	22689	-1.1%	99.9%

Number of Drug Offences Year To Date

	2008	2009	2010	2011	2012	Trend
Demand	813	859	1011	874	936	
Supply	768	1295	1152	793	716	
Total	1581	2154	2163	1667	1652	
	Drug Type					
Cocaine/Crack	742	1118	795	474	544	
Cannabis	738	893	1191	1052	951	
All Other Drugs	101	143	177	141	157	
Total	1581	2154	2163	1667	1652	

*Note-drug offences in this table are cumulative

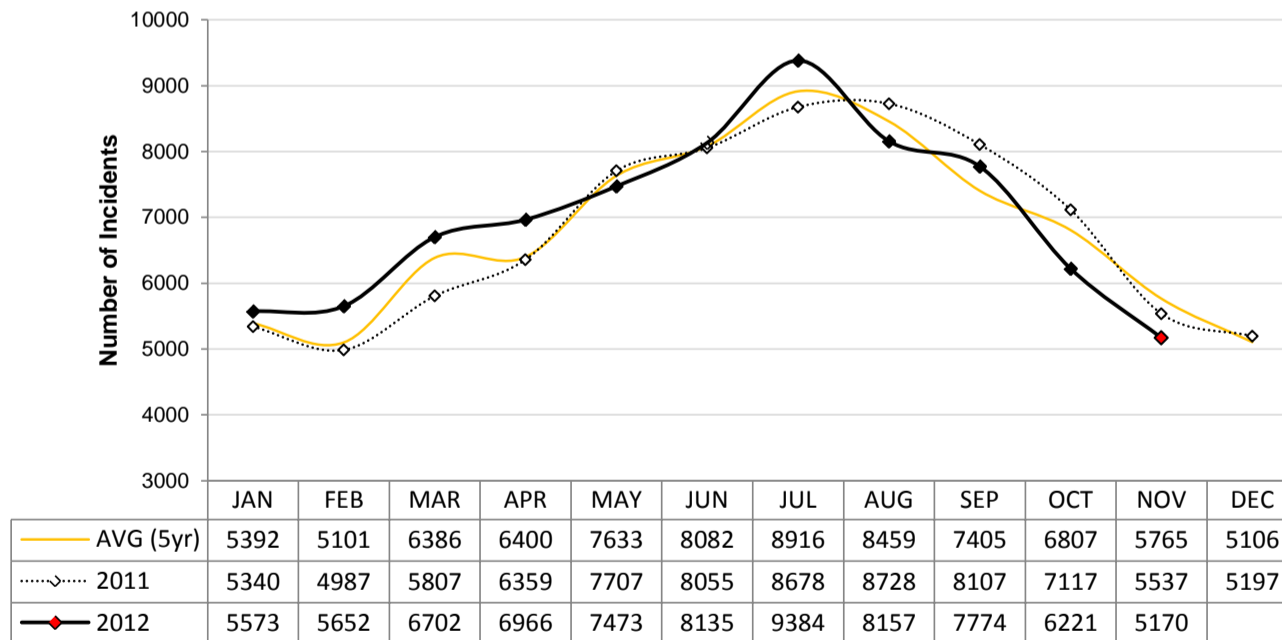
Calgary Disorder Statistics – CALLS FOR SERVICE

In addition to monitoring crime levels, the Calgary Police Service uses a range of incident types to record levels of "Social & Physical Disorder". The incident types selected for this disorder index are those which can have a negative impact on citizens' quality of life and perception of safety, particularly in public places. These incidents do not tend to be represented well in "traditional" crime statistics which have a propensity to focus more on person and property crime.

NOVEMBER 2012 PUBLIC GENERATED CALLS FOR SERVICE

PUBLIC GENERATED CALLS FOR SERVICE								
	Current Month				Year To Date			
	2011	2012	N Change (2011 to 2012)	% Change (2011-2012)	2011	2012	N Change (2011 to 2012)	% Change (2011-2012)
SOCIAL DISORDER								
Disturbance	679	675	-4	-0.6%	8562	9436	874	10.2%
Drugs	139	122	-17	-12.2%	2073	2222	149	7.2%
Indecent Act	41	26	-15	-36.6%	530	563	33	6.2%
Intoxicated Person	355	377	22	6.2%	5219	5312	93	1.8%
Juvenile Complaint	91	80	-11	-12.1%	2378	1899	-479	-20.1%
Landlord Tenant	164	168	4	2.4%	2213	2122	-91	-4.1%
Mental Health Concern	214	178	-36	-16.8%	2108	2285	177	8.4%
Neighbour Dispute	122	116	-6	-4.9%	1813	1801	-12	-0.7%
Noise Complaint	371	364	-7	-1.9%	6569	6316	-253	-3.9%
Party Complaint	102	89	-13	-12.7%	2484	2410	-74	-3.0%
Possible Gunshots	34	19	-15	-44.1%	713	740	27	3.8%
Prostitution	16	17	1	6.3%	480	360	-120	-25.0%
Prowler	30	27	-3	-10.0%	376	428	52	13.8%
Speeder	35	36	1	2.9%	608	657	49	8.1%
Suspicious Auto	592	531	-61	-10.3%	7762	7469	-293	-3.8%
Suspicious Person	900	836	-64	-7.1%	13242	13699	457	3.5%
Threats	251	229	-22	-8.8%	2856	2830	-26	-0.9%
Unwanted Guest	705	687	-18	-2.6%	7688	8020	332	4.3%
TOTAL SOCIAL DISORDER	4841	4577	-264	-5.5%	67674	68569	895	1.3%
PHYSICAL DISORDER								
Abandoned Auto	24	20	-4	-16.7%	345	258	-87	-25.2%
Fire	175	124	-51	-29.1%	2000	1918	-82	-4.1%
Property Damage*	497	449	-48	-9.7%	6403	6462	59	0.9%
TOTAL PHYSICAL DISORDER	696	593	-103	-14.8%	8748	8638	-110	-1.3%
TOTAL DISORDER	5537	5170	-367	-6.6%	76422	77207	785	1.0%

**Public Generated Disorder Calls for Service
YTD Jan 01 to Nov 30 2012**



***Data Notes:**

- 1) Dispatched, Advised, Call Back and Web Calls are included.
- 2) 128 calls in current month were reported at district front counters (walkins) and are excluded from this dataset.
- 3) Current Month: In addition to the 5,170 public generated calls, officers proactively generated 1,281 calls (these are not included in this report).
- 4) *The majority of Property Damage calls result in criminal code reports which are counted under Other Property Crimes in this report.

Calgary Traffic Collisions – CUMULATIVE NUMBERS

NOVEMBER 2012

	Current Month # of Collisions			Year To Date # of Collisions			Year To Date Rates (per 100,000 population)		
	2010	2011	2012	2010	2011	2012	2010	2011	2012
Fatal Collisions	1	1	0	23	17	27	2.1	1.6	2.4
Injury Collisions	205	212	220	2247	2272	2429	209.7	208.3	216.8
Property Damage Collisions	5085	3656	3505	40140	35642	34009	3746.1	3267.1	3035.9
E-Collision Reports*	14	95	574	252	299	1281	-	27.4	114.4
Total Collisions	5291	3964	4299	42410	38230	37746	3957.9	3504.3	3369.5
<i>Parking Lot Collisions</i>	1092	609	542	11259	7936	7118	1050.8	727.4	635.4
Total Reportable Collisions	4199	3355	3757	31151	30294	30628	2907.2	2776.9	2734.1

NOTE: Total Reportable Collisions exclude collisions along private roadways or public parking lots.

The number of reported traffic collisions may continue to increase over time. Due to data collection and reporting methods, totals for the current month may not be comparable to previous years.

* E-Collision reporting is a new data system which became operational in July 2009. At the time of printing this report it was not possible to separate collisions based on level of severity or to determine whether they occurred in a parking lot. Therefore, as E-Collision reports are completed and entered into the records management system, the determination of whether or not they are reportable is made, and such, they are removed from the E-Collision total and reclassified based on level of severity.

Top Collision Locations and Cause of Events

Number of Collisions	Location	Primary Cause of Event	Primary Direction of Travel
28	Deerfoot TR NE & 16 AV NE	Rear End	N/S
27	Deerfoot TR SE & Glenmore TR SE	Rear End	S
18	Crowchild TR SW & Glenmore TR SW	Rear End	E
17	Deerfoot TR NE & McKnight BV NE	Rear End	S
17	Deerfoot TR SE & Peigan TR SE	Rear End	S
16	Deerfoot TR NE & 32 AV NE	Sideswipe	N
14	Glenmore TR SW & 14 ST SW	Rear End	W
13	Deerfoot TR NE & Memorial DR E	Rear End	S
13	Deerfoot TR SE & 17 AV SE	Rear End	W
11	Crowchild TR NW & 5 AV NW	Rear End	N

When interpreting this data, it is imperative to consider that these figures represent only the number of collisions and they do not account for associated traffic volumes, weather conditions, types of collisions, driver experience, or any other variables which may or may not be significant factors. The locations denoted might be associated with intersections, on/off ramps, or mid-block locations, which are close but not necessarily at the exact specified locations. Collisions occurring on private properties, such as shopping mall parking lots have been excluded from the data in order to strictly assess intersection related collisions.

NOTE: This table excludes reports made through the E-Collision reporting system.

Calgary Crime Statistics - CUMULATIVE NUMBERS

NOVEMBER 2012

PERSON CRIMES	Current Month			Year To Date			Accumulated To Date		
	Number Of Offences			Number Of Offences			Percentage Cleared		
	2010	2011	2012	2010	2011	2012	2010	2011	2012
Homicide									
1st Degree	1	0	0	5	5	7	60.0%	60.0%	50.0%
2nd Degree	1	2	1	8	4	8	87.5%	100.0%	100.0%
Manslaughter	0	0	0	1	0	3	0.0%	-	100.0%
Infanticide	0	0	0	0	0	0	-	-	-
TOTAL	2	2	1	14	9	18	71.4%	77.8%	78.6%
Other Offences Causing Death									
Criminal Negligence	0	0	0	0	2	0	-	100.0%	-
Other Offences Causing Death	0	0	0	0	0	0	-	-	-
TOTAL	0	0	0	0	2	0	-	100.0%	-
Attempted Homicide									
Attempted Murder	3	0	0	13	11	10	53.8%	54.5%	50.0%
Conspiracy To Commit	0	0	0	0	0	0	-	-	-
TOTAL	3	0	0	13	11	10	53.8%	54.5%	50.0%
Sex Offences									
Level 3 Aggravated Sexual Assault	0	0	0	6	4	0	66.7%	100.0%	-
Level 2 Weapon/Threat/Bodily Harm	0	2	0	9	11	2	66.7%	72.7%	0.0%
Level 1 Sexual Assault	41	53	44	515	512	540	33.4%	30.9%	24.4%
Indecent Acts	9	12	10	216	132	126	36.6%	37.1%	48.4%
Other	5	4	3	98	89	86	64.3%	46.1%	51.2%
TOTAL	55	71	57	844	748	754	38.4%	34.8%	31.4%
Robbery									
Financial	0	8	2	31	49	26	74.2%	63.3%	65.4%
Commercial	31	36	15	262	246	193	48.5%	43.1%	43.0%
Person	48	42	44	751	600	568	33.7%	33.5%	28.3%
Home Invasion	4	5	2	76	58	33	31.6%	24.1%	24.2%
Robbery of Firearm	0	0	0	0	0	0	-	-	-
TOTAL	83	91	63	1120	953	820	38.1%	36.9%	32.8%
Assault									
Level 3 - Aggravated	12	8	8	90	106	97	82.2%	67.0%	69.1%
Level 2 - Weapon/Bodily Harm	119	88	88	1434	1304	1217	71.5%	65.9%	58.6%
Level 1 - Common Assault	295	339	302	3784	3677	3383	77.8%	75.5%	69.7%
Assault Police Officer	22	10	10	329	230	218	100.0%	97.8%	99.1%
Discharge Firearm with Intent	0	4	0	5	11	12	100.0%	81.8%	100.0%
Other Assaults	2	3	2	55	33	24	89.1%	90.9%	79.2%
TOTAL	450	452	410	5697	5361	4951	77.7%	74.1%	68.4%
Miscellaneous Person Crimes									
Kidnapping/Abduction	0	1	3	23	30	28	60.9%	46.7%	46.4%
Forcible Confinement	18	11	5	157	121	110	82.2%	74.4%	80.0%
Extortion	5	3	0	23	38	31	52.2%	55.3%	74.2%
Criminal Harassment	17	15	17	292	276	251	73.6%	68.5%	63.7%
Indecent/Harassing Calls	8	5	4	68	43	37	42.6%	37.2%	27.0%
TOTAL	48	35	29	563	508	457	70.9%	65.0%	64.3%
TOTAL PERSON CRIMES	641	651	560	8251	7592	7010	67.8%	64.9%	60.0%

Calgary Crime Statistics - CUMULATIVE NUMBERS

NOVEMBER 2012

PROPERTY CRIMES	Current Month			Year To Date			Accumulated To Date		
	Number Of Offences			Number Of Offences			Percentage Cleared		
	2010	2011	2012	2010	2011	2012	2010	2011	2012
Break and Enter									
Residential	270	187	204	2637	2312	2373	22.5%	13.2%	14.9%
Commercial	237	136	183	2954	1944	1901	21.7%	16.5%	11.5%
Other B&E	58	62	91	765	743	796	11.9%	6.7%	9.3%
Unlawfully in Residence	6	3	3	54	56	38	75.9%	87.5%	81.6%
B&E Firearms	0	0	0	0	0	1	-	-	100.0%
TOTAL	571	388	481	6410	5055	5109	21.3%	14.3%	13.3%
Theft									
Theft Over	38	19	11	550	355	213	11.6%	14.1%	17.4%
Theft Under	495	494	417	6098	6151	5671	14.0%	14.1%	12.0%
Possession Stolen Property	86	108	85	915	885	872	100.0%	99.6%	100.0%
From Vehicle Over	7	12	5	93	104	108	5.4%	1.9%	1.9%
From Vehicle Under	534	584	552	7738	7882	7621	5.6%	5.1%	3.9%
Shoplift Over	0	1	3	9	12	10	44.4%	50.0%	60.0%
Shoplift Under	311	355	283	3970	3909	3459	81.3%	82.9%	77.1%
TOTAL	1471	1573	1356	19373	19298	17954	28.4%	25.9%	21.7%
Vehicle Theft									
Theft Over	172	270	306	2028	2881	3479	13.3%	12.7%	10.1%
Theft Under	154	34	40	1744	761	456	12.8%	14.3%	17.5%
Attempted	30	15	7	515	250	128	3.7%	6.0%	1.6%
TOTAL	356	319	353	4287	3892	4063	12.0%	12.6%	10.7%
Fraud Related									
False Pretences	6	4	1	35	26	31	74.3%	61.5%	38.7%
Forgery/Uttering	36	22	12	367	333	228	75.5%	73.6%	69.7%
Forgery-Credit Card	31	36	10	340	346	258	43.5%	39.9%	30.6%
Impersonation	42	12	10	239	313	244	66.9%	67.1%	61.1%
Food/Lodging/Transportation	15	17	21	273	229	210	60.1%	65.1%	61.4%
Defraud Person (Under/Over)	128	88	67	1331	1265	1104	46.9%	46.9%	37.1%
Other Fraud	48	13	6	218	229	122	55.5%	73.4%	62.3%
TOTAL	306	192	127	2803	2741	2197	54.2%	55.4%	46.2%
Other Property Crimes									
Mischief Over \$5,000	5	2	3	51	60	62	37.3%	31.7%	24.2%
Mischief Under \$5,000	174	231	193	2538	2861	2677	26.0%	31.4%	23.8%
Other Mischief	108	99	66	1263	1372	1063	83.8%	86.4%	83.5%
Vehicle Damage	299	225	179	4156	3439	3133	9.4%	9.3%	8.5%
Arson	13	12	15	214	181	197	17.3%	11.6%	18.8%
TOTAL	599	569	456	8222	7913	7132	26.3%	30.9%	25.9%
TOTAL PROPERTY CRIMES	3303	3041	2773	41095	38899	36455	26.9%	26.2%	21.6%

Calgary Crime Statistics - CUMULATIVE NUMBERS

NOVEMBER 2012

OTHER CRIMINAL CODE	Current Month Number Of Offences			Year To Date Number Of Offences			Accumulated To Date Percentage Cleared		
	2010	2011	2012	2010	2011	2012	2010	2011	2012
Vice									
Impede/Communicate	0	0	1	190	103	62	100.0%	100.0%	100.0%
Live on Avails	1	0	0	3	8	1	100.0%	87.5%	100.0%
Bawdy House	0	0	0	24	10	1	100.0%	100.0%	100.0%
Procure/Solicit	3	0	0	10	14	2	100.0%	92.9%	50.0%
TOTAL	4	0	1	227	135	66	100.0%	98.5%	98.5%
Gaming									
Gaming House	0	0	0	0	0	0	-	-	-
Betting	0	0	0	0	0	0	-	-	-
Lotteries/Games	0	0	0	0	0	0	-	-	-
Other	0	0	0	5	1	1	100.0%	0.0%	100.0%
TOTAL	0	0	0	5	1	1	100.0%	0.0%	100.0%
Weapon Related									
Prohibited	21	13	11	209	171	155	100.0%	100.0%	100.0%
Restricted	20	24	17	309	211	208	100.0%	99.5%	99.5%
Explosives	0	0	0	1	4	1	100.0%	100.0%	100.0%
Possess Prohibited	0	0	0	0	0	0	-	-	-
Use Firearm in Offence	0	0	1	12	5	4	100.0%	100.0%	100.0%
FAC Related	8	5	5	101	79	70	100.0%	100.0%	100.0%
Other	69	57	37	915	673	533	99.3%	98.5%	99.1%
TOTAL	118	99	71	1547	1143	971	99.6%	99.0%	99.4%
Miscellaneous									
Counterfeiting	30	19	43	561	354	224	8.0%	7.1%	6.3%
Obstruct Peace Officer	57	38	38	726	589	550	99.2%	99.5%	99.6%
Bail Violation/Fail to attend	251	275	258	3078	3005	2977	99.9%	100.0%	100.0%
Fail to comply with Probation	57	40	54	762	716	603	100.0%	100.0%	100.0%
Escape Custody/UAL	17	24	15	200	167	201	98.5%	98.8%	98.5%
Attempt to commit/accessory	3	2	0	54	31	35	94.4%	96.8%	88.6%
Miscellaneous	145	129	114	1812	1729	1357	76.7%	78.9%	71.4%
TOTAL	560	527	522	7193	6591	5947	86.7%	89.4%	89.8%
TOTAL OTHER CRIMINAL CODE	682	626	594	8972	7870	6985	89.3%	90.9%	91.2%
TOTAL CRIMINAL CODE (EXCL. TRAFFIC)	4626	4318	3927	58318	54361	50450	42.3%	41.1%	36.8%

Calgary Crime Statistics - CUMULATIVE NUMBERS

NOVEMBER 2012

SELECTED OTHER	Current Month			Year To Date			Accumulated To Date		
	Number Of Offences			Number Of Offences			Percentage Cleared		
	2010	2011	2012	2010	2011	2012	2010	2011	2012
Criminal Code Traffic									
Impaired Causing Death	0	1	0	0	3	3	-	100.0%	100.0%
Impaired Causing Bodily Harm	2	0	0	14	9	9	100.0%	88.9%	100.0%
Impaired > .08	102	110	87	1193	1170	1155	100.0%	99.9%	100.0%
Impaired Driving	123	133	117	1501	1528	1484	99.9%	100.0%	100.0%
Fail/Refuse	25	30	40	324	421	393	100.0%	100.0%	100.0%
Dangerous Causing Death	0	1	0	0	4	6	-	100.0%	100.0%
Dangerous Operation Causing Harm	1	3	0	10	16	6	100.0%	87.5%	100.0%
Dangerous Operation of Motor Vehicle	14	9	9	155	140	118	100.0%	98.6%	98.3%
Impaired Driving (Drugs)	0	0	0	4	4	0	100.0%	100.0%	-
TOTAL	267	287	253	3201	3295	3174	100.0%	99.8%	99.9%
Drugs									
CDSA/NCA/FDA Possession	69	61	83	1011	879	936	100.0%	100.0%	100.0%
CDSA/NCA/FDA Trafficking	67	13	18	455	283	283	100.0%	100.0%	100.0%
CDSA/NCA/FDA Possession for Purpose	49	37	23	626	477	379	100.0%	100.0%	100.0%
CDSA/NCA Importation/Export	0	0	0	0	0	5	-	-	100.0%
CDSA/NCA Cultivation/Production	7	4	2	71	75	49	100.0%	100.0%	100.0%
CDSA/NCA/FDA Prop./Proc. from Trafficking	0	0	0	0	0	0	-	-	-
TOTAL	192	115	126	2163	1714	1652	100.0%	100.0%	100.0%
Selected Non Criminal Code Incidents									
Accidental/Sudden Death	79	59	69	607	586	667	0.0%	0.0%	0.0%
Missing Persons	257	283	253	3000	3368	2963	0.0%	0.0%	0.0%
Court Order	76	94	106	859	1078	1027	0.0%	0.0%	0.0%
Domestic Information	1048	960	1024	11264	11457	11537	0.0%	0.0%	0.0%
Domestic Information Standby	64	66	62	712	795	808	0.0%	0.0%	0.0%
TOTAL	1524	1462	1514	16442	17284	17002	0.0%	0.0%	0.0%
Statutes									
Federal	26	40	25	397	415	358	100.0%	100.0%	100.0%
Provincial	34	34	26	550	379	403	98.9%	99.2%	99.3%
Municipal	9	6	8	250	154	100	98.8%	100.0%	98.0%
TOTAL	69	80	59	1197	948	861	99.2%	99.7%	99.4%
TOTAL SELECTED OTHER	2052	1944	1952	23003	23241	22689	28.5%	25.6%	25.0%