

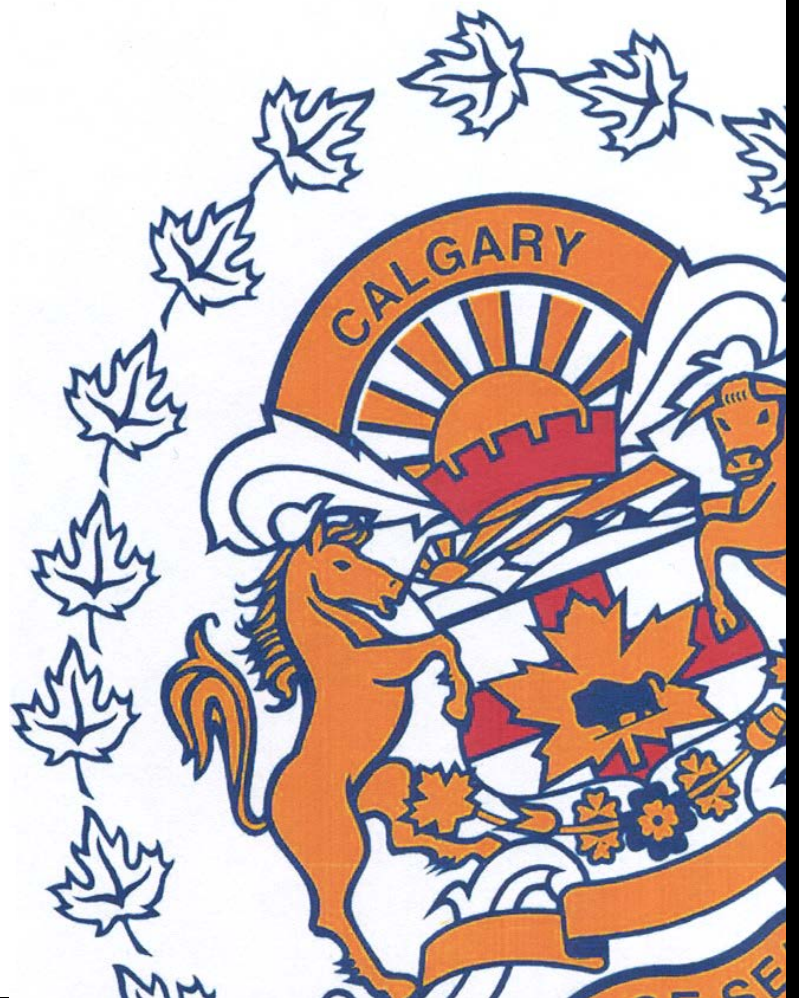
December

Monthly Statistical

REPORT

2013

Compiled by: Centralized Analysis Unit
Crime and Intelligence Analytical Section
Strategic Services Division
© Calgary Police Service 2014



The Calgary Police Service provides this information in good faith but it provides no warranty, nor accepts any liability arising from any incorrect, incomplete or misleading information.

TABLE OF CONTENTS

	Page
Monthly Highlights - STATIC NUMBER COMPARISON	1
Calgary Crime Statistics – STATIC NUMBERS	
Person Crimes	2
Property Crimes	3
Other Criminal Code/Selected Other/Drug Offences	4
Calgary Disorder Statistics – CALLS FOR SERVICE	5
Calgary Traffic Collisions - CUMULATIVE NUMBERS	6
Calgary Crime Statistics - CUMULATIVE NUMBERS	7

REPORT NOTES

Most of the statistical data in this report are derived from the Police Information Management System (PIMS) and compiled by the Centralized Analysis Unit. The numbers reported may change on a daily basis due to the dynamic nature of offences being reported and cleared. Disorder data is derived from the CAD system and is static.

To a large extent, the data in this report are based on accumulated to date information. **(Except for the Monthly Highlights which are based on static information (i.e.: a snap-shot in time).**

- For offences based on accumulated to date information, the number of offences recorded may be higher than previously reported (i.e. in previous statistical reports) due to late reporting. Although this does not greatly affect the number of occurrences for all offences, for some categories it may be as high as a 30-40% increase. The published data for the current period can therefore be expected to increase as time passes. As a result, readers should exercise caution when making comparisons between historical data and current data (i.e. previous year to this year) as data for the historic period will now include late reported offences, but data for the current period will not at this time. To achieve an effective comparison, current data should be evaluated against the originally published data for the historic period.
- Likewise, late reporting affects the number and percentage of offences cleared. Cases are often cleared months and sometimes years later. Consequently, clearances for previous years may appear to be much higher than those of the present year. Cases “cleared by charge” and those “cleared otherwise” are included in these totals.
- For offences based on “static” or “snap-shot” information, data totals will only reflect the number of offences reported in the original publication. They are not updated. Although late reporting may occur, and offences may continue to be cleared as time passes, these new events are not taken into account when preparing this statistical report.

A single incident may result in multiple offences, with each unique *Criminal Code* violation within the incident being counted as an offence. Furthermore, person crime offences are typically counted by the number of victims. Please note that offences are assigned to the month in which the offence "started", not the month they were reported or cleared. Also note that “attempted” incidents are included in these totals. For a more detailed explanation of the Offence counting procedure, please contact the Centralized Analysis Unit.

Monthly Highlights – STATIC NUMBER COMPARISON

To reduce the impact of late reporting, comments on this page are a comparison between the current month's data and the originally published data from the same month of last year.

DECEMBER 2013

PERSON CRIME

- ◆ Reported **person crimes** for the month of December 2013 increased 2.9% when compared to December 2012 (524 offences in December 2013 vs. 509 in December 2012). Additionally, person crimes were 9.5% below the five year average for December.
- ◆ Total **robbery** offences in December 2013 increased 31.4% when compared to December 2012 (67 offences in December 2013 vs. 51 in December 2012); During December 2013 there were:
 - 3 **financial robberies** (compared to 0 in December 2012);
 - 26 **commercial robberies** (compared to 9 in December 2012);
 - 36 **commercial robberies** (compared to 36 in December 2012); and
 - 2 **home invasions** (compared to 6 in December 2012).
- ◆ **Assaults** increased 3.6% this month (402 offences in December 2013 vs. 388 in December 2012).
- ◆ **Sex offences** increased 9.1% this month (36 **sex offences** in December 2013 compared to 33 in December 2012).

PROPERTY CRIME

- ◆ Reported **property crimes** this month increased 6.4% when compared to December 2012 (2561 offences in December compared to 2407 in December 2012). Property crimes were also below the five year average by 2.8%.
- ◆ **Vehicle theft** (including attempts) increased 17.7% when compared to December 2012 (418 offences in December 2013 vs. 355 in December 2012).
- ◆ **Theft** offences increased 9.6% this month when compared to December 2012 (1200 offences in December 2013 vs. 1095 in December 2012).
- ◆ **Break and enter** offences this month decreased 3.9% when compared to December 2012 (393 offences this month compared to 409 in December 2012).
 - **Residential break and enter** offences this month decreased 15.2 when compared to December 2012 (145 offences in December 2013 vs. 171 in December 2012); and
 - **Commercial break and enter** offences increased 1.7% this month when compared to December 2012 (180 offences in December 2013 vs. 177 in December 2012).
- ◆ **Fraud related** offences increased by 3.2% this month (128 offences in December 2013 vs. 124 in December 2012).

DISORDER

- ◆ There were 5681 disorder incidents this December, a 9.8% increase above volume last December (+505 incidents) and an 11.7% increase above the 5 year average (roughly +593 incidents).
- ◆ Physical disorder remained on par with volumes observed last December (533 incidents this month vs. 529 incidents in December 2012); a 12.8% reduction was noted against the 5 year average (N=611 incidents). **Abandoned auto** and **fire** incidents both noted an increase compared to last December while **property damage** incidents recorded a decline.
- ◆ Social disorder noted a 10.8% increase when compared to December 2012 (5148 incidents this month vs. 4647 in December 2012). **Intoxicated persons**, **neighbor disputes** and **unwanted guest** incidents held the most noteworthy increases compared to last December and against each of their respective 5 year averages; YTD volumes reached 6 year highs within **intoxicated persons** and **unwanted guests** as well. **Noise complaints** and **threats** noted the greatest declines compared to December 2012; both event types also recorded decreases against their 5 year averages as well.

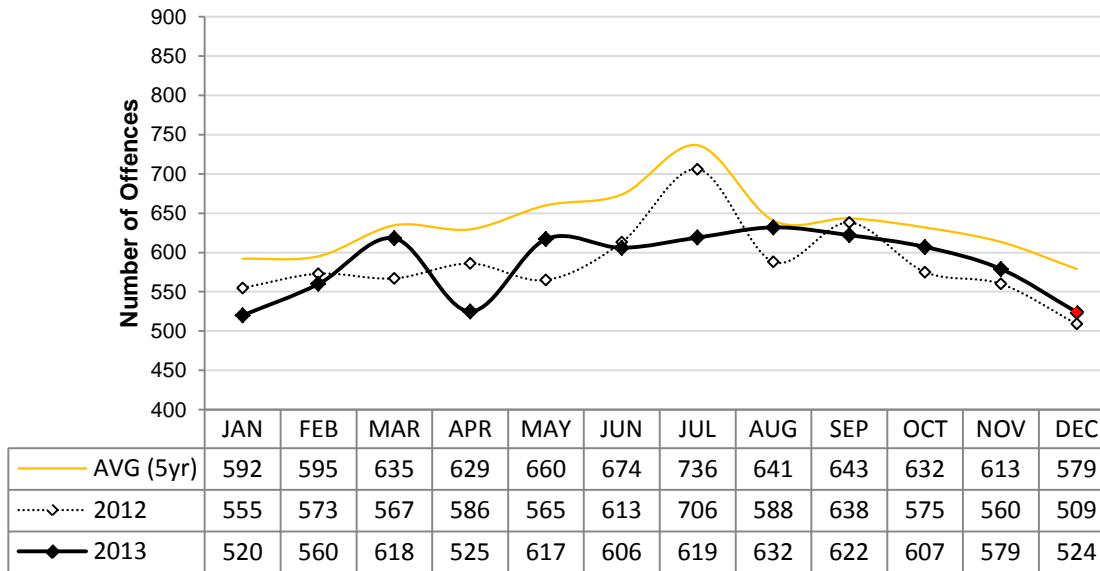
Calgary Person Crime Statistics – STATIC NUMBERS

The static crime numbers on this page are derived from historical Calgary Police Service Monthly Statistical Reports. These statistics are used when writing the Monthly Highlights page in order to make a fair comparison using data which has not been allowed to increase due to late reporting of crime. Using static numbers allows us to compare crime levels at a specific point in time and make an accurate determination of increases or decreases. The cumulative crime numbers (pages 7 – 10) are statistics derived from the CPS Police Information Management System. P.I.M.S. cannot produce static numbers and therefore the cumulative numbers reflect any late reporting of crime. To achieve an effective comparison, current data should be evaluated against the originally published data for the historic period. *Due to the dynamic nature of ongoing homicide investigations these numbers may have been manually updated to reflect the current homicide count. Due to manually updating, it's possible 1 or more homicides may be reflected within the assault category. The homicide counts are provided by the homicide unit.

DECEMBER 2013

	Current Month Number Of Offences			Year To Date Number Of Offences			% Cleared 2013
	2012	2013	% Change (2012-2013)	2012	2013	% Change (2012-2013)	
PERSON CRIMES							
Homicide*	0	1	N/A	18	22	22.2%	86.4%
Other Offences Causing Death	0	0	N/A	0	0	N/A	-
Attempted Homicide	0	0	N/A	11	13	18.2%	69.2%
Sex Offences	33	36	9.1%	804	779	-3.1%	31.5%
Robbery:							
Financial	0	3	N/A	26	34	30.8%	58.8%
Commercial	9	26	188.9%	202	207	2.5%	34.8%
Person	36	36	0.0%	606	588	-3.0%	21.8%
Home Invasion	6	2	-66.7%	39	44	12.8%	22.7%
Total Robbery	51	67	31.4%	873	873	0.0%	26.3%
Assault:							
Level 3 - Aggravated	10	8	-20.0%	108	110	1.9%	73.6%
Level 2 - Weapon/Bodily Harm	75	99	32.0%	1295	1427	10.2%	58.5%
Level 1 - Common Assault	278	276	-0.7%	3680	3621	-1.6%	68.4%
Assault Police Officer	19	17	-10.5%	238	218	-8.4%	97.7%
Discharge Firearm with Intent	1	0	-100.0%	13	14	7.7%	57.1%
Other Assaults	5	2	-60.0%	29	19	-34.5%	89.5%
Total Assault	388	402	3.6%	5363	5409	0.9%	67.1%
Misc Person Crimes	37	18	-51.4%	502	461	-8.2%	59.9%
TOTAL PERSON CRIMES	509	524	2.9%	7571	7557	-0.2%	58.3%

**Person Crime-Static Numbers
YTD Jan 01 to Dec 31 2013**



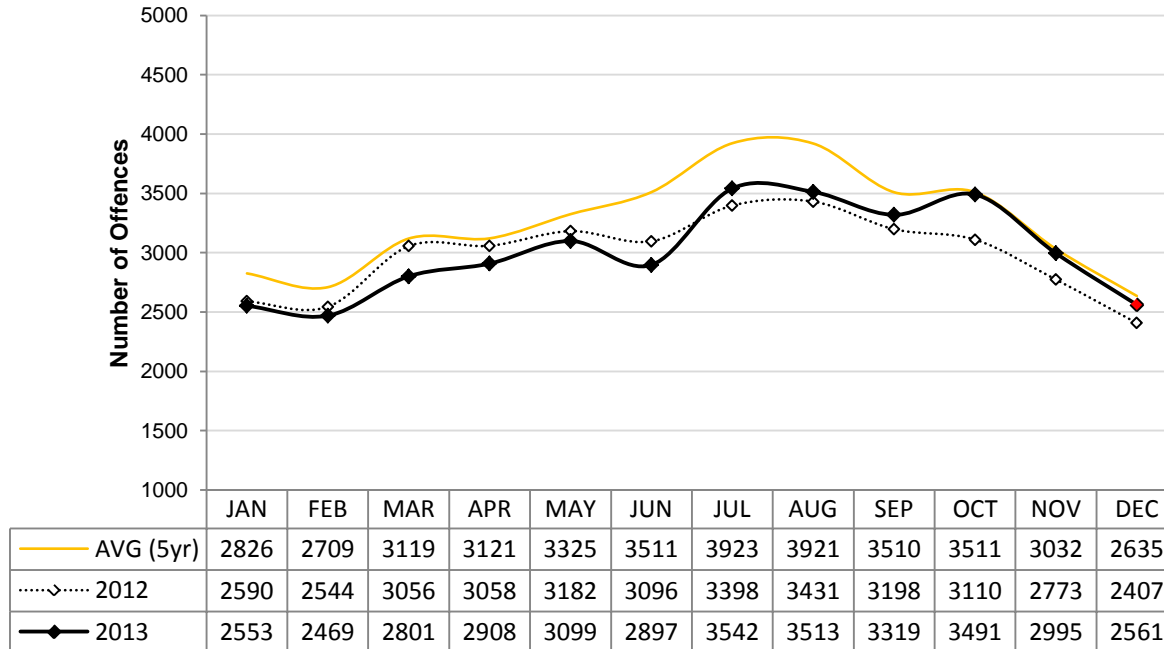
Calgary Property Crime Statistics – STATIC NUMBERS

The static crime numbers on this page are derived from historical Calgary Police Service Monthly Statistical Reports. These statistics are used when writing the Monthly Highlights page in order to make a fair comparison using data which has not been allowed to increase due to late reporting of crime. Using static numbers allows us to compare crime levels at a specific point in time and make an accurate determination of increases or decreases. The cumulative crime numbers (pages 7 – 10) are statistics derived from the CPS Police Information Management System. P.I.M.S. cannot produce static numbers and therefore the cumulative numbers reflect any late reporting of crime. To achieve an effective comparison, current data should be evaluated against the originally published data for the historic period.

DECEMBER 2013

	Current Month			Year To Date			
	Number Of Offences			Number Of Offences			
	2012	2013	% Change (2012-2013)	2012	2013	% Change (2012-2013)	% Cleared 2013
PROPERTY CRIMES							
Break and Enter:							
<i>Residential B&E</i>	171	145	-15.2%	2555	2479	-3.0%	15.8%
<i>Commercial B&E</i>	177	180	1.7%	2121	2022	-4.7%	13.5%
<i>Other B&E</i>	58	66	13.8%	862	1045	21.2%	8.8%
<i>Unlawfully in Residence</i>	3	2	-33.3%	40	38	-5.0%	78.9%
Total Break and Enter	409	393	-3.9%	5578	5584	0.1%	14.1%
Theft	1095	1200	9.6%	19180	19667	2.5%	21.9%
Vehicle Theft (including attempts)	355	418	17.7%	4441	5137	15.7%	8.6%
Fraud Related	124	128	3.2%	2427	2547	4.9%	45.2%
Other Property Crimes	424	422	-0.5%	7597	7058	-7.1%	25.5%
TOTAL PROPERTY CRIMES	2407	2561	6.4%	39223	39993	2.0%	21.2%

**Property Crime-Static Numbers
YTD Jan 01 to Dec 31 2013**



Calgary Other Crime Statistics – STATIC NUMBERS

The static crime numbers on this page are derived from historical Calgary Police Service Monthly Statistical Reports. These statistics are used when writing the Monthly Highlights page in order to make a fair comparison using data which has not been allowed to increase due to late reporting of crime. Using static numbers allows us to compare crime levels at a specific point in time and make an accurate determination of increases or decreases. The cumulative crime numbers (pages 7 – 10) are statistics derived from the CPS Police Information Management System. P.I.M.S. cannot produce static numbers and therefore the cumulative numbers reflect any late reporting of crime. To achieve an effective comparison, current data should be evaluated against the originally published data for the historic period.

DECEMBER 2013

	Current Month Number Of Offences			Year To Date Number Of Offences			% Cleared 2013
	2012	2013	% Change (2012-2013)	2012	2013	% Change (2012-2013)	
OTHER CRIMINAL CODE							
Vice	0	0	N/A	66	132	100.0%	98.5%
Gaming	0	0	N/A	1	1	0.0%	100.0%
Weapon Related	80	53	-33.8%	1059	943	-11.0%	98.8%
Misc	433	390	-9.9%	6428	6047	-5.9%	90.9%
TOTAL OTHER CRIMINAL CODE	513	443	-13.6%	7554	7123	-5.7%	92.1%
TOTAL OVERALL CRIMINAL CODE (excluding traffic)	3429	3528	2.9%	54348	54673	0.6%	35.6%
SELECTED OTHER							
Criminal Code Traffic	267	230	-13.9%	3462	2944	-15.0%	99.9%
Drugs	104	92	-11.5%	1760	1732	-1.6%	99.9%
Selected Non Criminal Code:							
<i>Accidental/Sudden Death</i>	77	79	2.6%	745	734	-1.5%	N/A
<i>Missing Persons</i>	193	179	-7.3%	3163	2832	-10.5%	N/A
<i>Court Order</i>	77	62	-19.5%	1105	1231	11.4%	N/A
<i>Domestic Information</i>	1094	1100	0.5%	12667	13120	3.6%	N/A
<i>Domestic Information Standby</i>	67	57	-14.9%	876	886	1.1%	N/A
Total Selected Non Criminal Code	1508	1477	-2.1%	18556	18803	1.3%	N/A
Statutes (Federal/Provincial/Municipal)	74	37	-50.0%	942	811	-13.9%	99.5%
TOTAL SELECTED OTHER	1953	1836	-6.0%	24720	24290	-1.7%	99.8%

Number of Drug Offences Year To Date

	2009	2010	2011	2012	2013	Trend
Demand	926	1102	950	1013	1037	
Supply	1378	1208	851	747	695	
Total	2304	2310	1801	1760	1732	
	Drug Type					
Cocaine/Crack	1185	835	510	576	526	
Cannabis	971	1290	1139	1021	1037	
All Other Drugs	148	185	152	163	169	
Total	2304	2310	1801	1760	1732	

*Note-drug offences in this table are cumulative

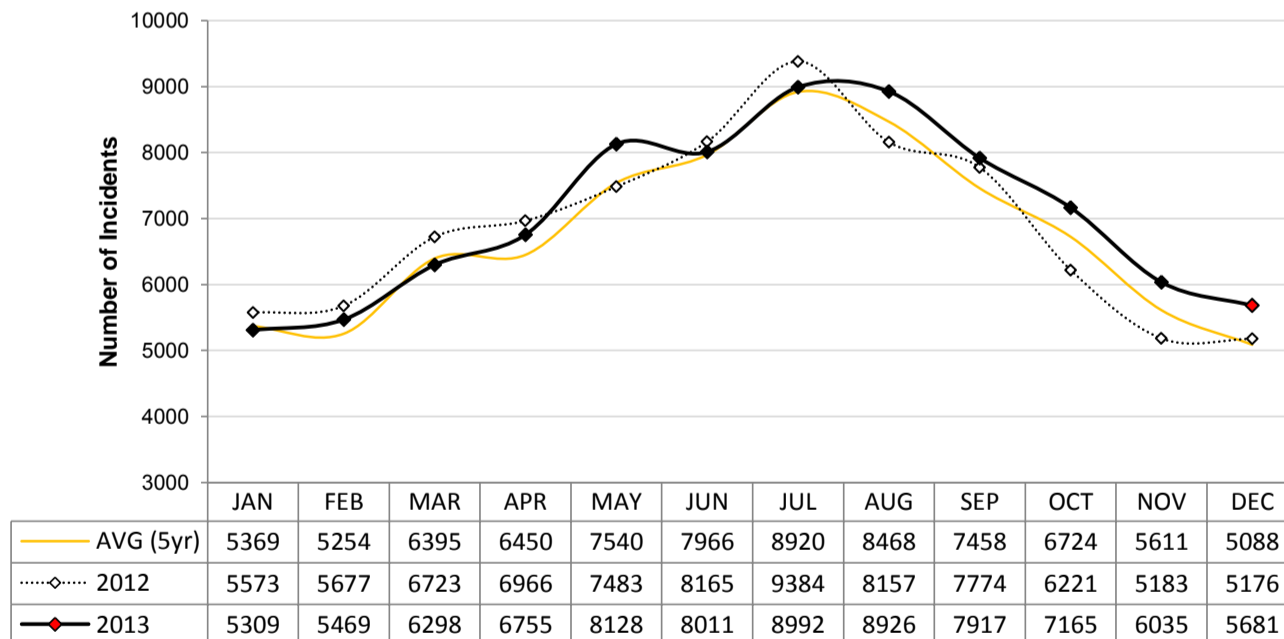
Calgary Disorder Statistics – CALLS FOR SERVICE

In addition to monitoring crime levels, the Calgary Police Service uses a range of incident types to record levels of "Social & Physical Disorder". The incident types selected for this disorder index are those which can have a negative impact on citizens' quality of life and perception of safety, particularly in public places. These incidents do not tend to be represented well in "traditional" crime statistics which have a propensity to focus more on person and property crime.

DECEMBER 2013 PUBLIC GENERATED CALLS FOR SERVICE

	Current Month				Year To Date			
	2012	2013	N Change (2012 to 2013)	% Change (2012-2013)	2012	2013	N Change (2012 to 2013)	% Change (2012-2013)
SOCIAL DISORDER								
Disturbance	680	705	25	3.7%	10126	10079	-47	-0.5%
Drugs	122	123	1	0.8%	2350	2291	-59	-2.5%
Indecent Act	28	26	-2	-7.1%	591	594	3	0.5%
Intoxicated Person	351	431	80	22.8%	5675	6044	369	6.5%
Juvenile Complaint	46	44	-2	-4.3%	1946	1550	-396	-20.3%
Landlord Tenant	164	166	2	1.2%	2287	2487	200	8.7%
Mental Health Concern	190	215	25	13.2%	2481	2835	354	14.3%
Neighbour Dispute	114	162	48	42.1%	1918	1896	-22	-1.1%
Noise Complaint	372	344	-28	-7.5%	6691	6163	-528	-7.9%
Party Complaint	82	82	0	0.0%	2493	2062	-431	-17.3%
Possible Gunshots	25	16	-9	-36.0%	766	768	2	0.3%
Prostitution	10	11	1	10.0%	370	374	4	1.1%
Prowler	28	32	4	14.3%	456	555	99	21.7%
Speeder	19	16	-3	-15.8%	676	666	-10	-1.5%
Suspicious Auto	536	536	0	0.0%	8018	8322	304	3.8%
Suspicious Person	835	872	37	4.4%	14549	15106	557	3.8%
Threats	203	187	-16	-7.9%	3036	2873	-163	-5.4%
Unwanted Guest	842	1180	338	40.1%	8873	11826	2953	33.3%
TOTAL SOCIAL DISORDER	4647	5148	501	10.8%	73302	76491	3189	4.4%
PHYSICAL DISORDER								
Abandoned Auto	38	57	19	50.0%	296	359	63	21.3%
Fire	129	146	17	13.2%	2048	2028	-20	-1.0%
Property Damage*	362	330	-32	-8.8%	6836	5808	-1028	-15.0%
TOTAL PHYSICAL DISORDER	529	533	4	0.8%	9180	8195	-985	-10.7%
TOTAL DISORDER	5176	5681	505	9.8%	82482	84686	2204	2.7%

**Public Generated Disorder Calls for Service
YTD Jan 01 to December 31 2013**



***Data Notes:**

- 1) Dispatched, Advised, Call Back and Web Calls are included.
- 2) 132 calls in current month were reported at district front counters (walkins) and are excluded from this dataset.
- 3) Current Month: In addition to the 5,681 public generated calls, officers proactively generated 1,061 calls (these are not included in this report).
- 4) *The majority of Property Damage calls result in criminal code reports which are counted under Other Property Crimes in this report.

Calgary Traffic Collisions – CUMULATIVE NUMBERS

DECEMBER 2013

	Current Month # of Collisions			Year To Date # of Collisions			Year To Date Rate per 100,000 population		
	2011	2012	2013	2011	2012	2013	2011	2012	2013
Fatal Collisions	3	5	2	20	32	37	1.8	2.9	3.2
Injury Collisions	229	233	203	2523	2694	2790	231.3	240.5	242.7
Property Damage Collisions	3451	2194	4329	39415	36408	40368	3613.0	3250.1	3511.6
e-Collision Reports*	35	74	830	284	446	2100	26.0	39.8	182.7
Total Collisions	3718	2506	5364	42242	39580	45295	3872.1	3533.2	3940.2
<i>Parking Lot Collisions</i>	748	281	704	8812	7468	8555	807.7	666.7	744.2
Total Reportable Collisions	2970	2225	4660	33430	32112	36740	3064.3	2866.6	3196.0

Source: Cumulative data; PIMS (January 2014)

NOTE: Total Reportable Collisions exclude collisions along private roadways or public parking lots.

The number of reported traffic collisions may continue to increase over time. Due to data collection and reporting methods, totals for the current month may not be comparable to previous years.

* e-Collision reporting is a data system which became operational in July 2009. At the time this report was published it was not possible to separate all collisions based on level of severity or to determine whether they occurred in a parking lot. Therefore, as e-Collision reports are completed and entered into the CPS records management system, it is determined whether or not they are reportable, and they are removed from the e-Collision count total and reclassified based on level of severity.

Top Collision Locations and Primary Cause of Events

Number of Collisions	Location	Primary Cause of Event	Primary Direction of Travel
29	Deerfoot Trail NE & 16 Avenue NE	Rear End	E
22	Deerfoot Trail NE & Memorial Drive E	Rear End	S
22	Deerfoot Trail NE & Beddington Trail NE	Struck Object	N
21	Deerfoot Trail SE & Stoney Trail NE	Struck Object	E
18	Deerfoot Trail SE & Glenmore Trail SE	Struck Object	S
16	Deerfoot Trail NE & 32 Avenue NE	Struck Object	S / N
15	Anderson Road SE & Bonaventure Drive SE	Rear End	E
15	Blackfoot Trail SE & Glenmore Trail SE	Rear End / Struck Object	W
15	Deerfoot Trail NE & Airport Trail NE	Struck Object	N
14	16 Avenue NE & 36 Street NE	Rear End	N
13	Crowchild Trail SW & 33 Avenue SW	Struck Object	S

Source: Static data; PIMS (January 2014)

When interpreting these data, it is imperative to consider that these figures represent only the number of collisions and they do not account for associated traffic volumes, weather conditions, collision types, driver experience, or any other variables which may or may not be significant factors. The locations denoted might be associated with intersections, on/off ramps, or mid-block locations, which are in close proximity but not necessarily at the exact specified locations. Collisions occurring on private property, such as shopping mall parking lots have been excluded from the data in order to strictly assess intersection related collisions.

NOTE: This table excludes reports made through the e-Collision reporting system.

Calgary Crime Statistics - CUMULATIVE NUMBERS

DECEMBER 2013

PERSON CRIMES	Current Month			Year To Date			Accumulated To Date		
	Number Of Offences			Number Of Offences			Percentage Cleared		
	2011	2012	2013	2011	2012	2013	2011	2012	2013
Homicide									
1st Degree	0	0	1	5	7	8	60.0%	57.1%	62.5%
2nd Degree	1	0	0	5	8	13	100.0%	87.5%	100.0%
Manslaughter	0	0	0	0	2	1	-	100.0%	100.0%
Infanticide	0	0	0	0	0	0	-	-	-
TOTAL	1	0	1	10	17	22	80.0%	76.5%	86.4%
Other Offences Causing Death									
Criminal Negligence	0	0	0	2	0	0	100.0%	-	-
Other Offences Causing Death	0	0	0	0	0	0	-	-	-
TOTAL	0	0	0	2	0	0	100.0%	-	-
Attempted Homicide									
Attempted Murder	1	0	0	12	14	9	50.0%	35.7%	55.6%
Conspiracy To Commit	0	0	0	0	4	4	-	100.0%	100.0%
TOTAL	1	0	0	12	18	13	50.0%	50.0%	69.2%
Sex Offences									
Level 3 Aggravated Sexual Assault	0	1	0	4	1	4	100.0%	100.0%	25.0%
Level 2 Weapon/Threat/Bodily Harm	0	1	0	11	3	8	72.7%	33.3%	75.0%
Level 1 Sexual Assault	47	45	26	559	626	534	32.0%	27.8%	24.2%
Indecent Acts	8	4	8	140	137	141	37.1%	53.3%	44.0%
Other	10	9	2	99	109	92	48.5%	54.1%	51.1%
TOTAL	65	60	36	813	876	779	35.8%	35.2%	31.5%
Robbery									
Financial	3	1	3	52	27	34	63.5%	77.8%	58.8%
Commercial	20	8	26	266	202	207	45.5%	45.0%	34.8%
Person	61	37	36	661	605	588	32.7%	29.6%	21.8%
Home Invasion	7	6	2	65	39	44	26.2%	23.1%	22.7%
Robbery of Firearm	0	0	0	0	0	0	-	-	-
TOTAL	91	52	67	1044	873	873	37.1%	34.4%	26.3%
Assault									
Level 3 - Aggravated	8	10	8	114	115	110	68.4%	68.7%	73.6%
Level 2 - Weapon/Bodily Harm	129	78	99	1433	1308	1427	64.8%	59.7%	58.5%
Level 1 - Common Assault	293	298	276	3970	3739	3621	75.3%	70.6%	68.4%
Assault Police Officer	33	20	17	263	237	218	98.1%	98.7%	97.7%
Discharge Firearm with Intent	0	1	0	11	13	14	81.8%	100.0%	57.1%
Other Assaults	4	6	2	37	30	19	89.2%	83.3%	89.5%
TOTAL	467	413	402	5828	5442	5409	73.7%	69.3%	67.1%
Miscellaneous Person Crimes									
Kidnapping/Abduction	2	2	0	32	30	34	46.9%	46.7%	38.2%
Forcible Confinement	14	15	4	135	134	104	76.3%	76.9%	81.7%
Extortion	3	2	3	41	35	29	53.7%	74.3%	51.7%
Criminal Harassment	18	30	9	294	307	252	69.4%	65.1%	61.1%
Indecent/Harassing Calls	2	1	2	45	41	42	35.6%	34.1%	21.4%
TOTAL	39	50	18	547	547	461	65.8%	65.3%	59.9%
TOTAL PERSON CRIMES	664	575	524	8256	7773	7557	64.8%	61.2%	58.3%

Calgary Crime Statistics - CUMULATIVE NUMBERS

DECEMBER 2013

PROPERTY CRIMES	Current Month			Year To Date			Accumulated To Date		
	Number Of Offences			Number Of Offences			Percentage Cleared		
	2011	2012	2013	2011	2012	2013	2011	2012	2013
Break and Enter									
Residential	242	177	145	2554	2579	2479	13.7%	18.0%	15.8%
Commercial	149	198	180	2093	2164	2022	16.0%	15.9%	13.5%
Other B&E	48	62	66	791	871	1045	6.6%	9.9%	8.8%
Unlawfully in Residence	6	3	2	62	40	38	85.5%	80.0%	78.9%
B&E Firearms	0	0	0	0	1	0	-	100.0%	-
TOTAL	445	440	393	5500	5655	5584	14.3%	16.4%	14.1%
Theft									
Theft Over	18	20	16	373	257	257	14.2%	20.2%	12.1%
Theft Under	469	436	402	6620	6267	6978	13.9%	12.9%	9.2%
Possession Stolen Property	61	65	46	949	967	886	99.6%	100.0%	100.0%
From Vehicle Over	3	6	6	107	115	88	1.9%	6.1%	3.4%
From Vehicle Under	521	446	448	8403	8174	8002	5.1%	4.4%	3.5%
Shoplift Over	0	0	1	12	10	10	50.0%	60.0%	30.0%
Shoplift Under	347	276	281	4256	3765	3446	83.1%	77.6%	71.8%
TOTAL	1419	1249	1200	20720	19555	19667	28.5%	26.2%	21.9%
Vehicle Theft									
Theft Over	297	340	349	3178	3859	4319	12.3%	10.9%	7.8%
Theft Under	35	42	56	796	515	637	14.8%	20.4%	16.0%
Attempted	22	7	13	272	136	181	5.5%	2.2%	2.2%
TOTAL	354	389	418	4246	4510	5137	12.3%	11.7%	8.6%
Fraud Related									
False Pretences	2	2	0	28	35	22	60.7%	51.4%	77.3%
Forgery/Uttering	22	39	16	355	330	304	73.8%	71.8%	70.4%
Forgery-Credit Card	21	18	8	367	300	200	39.0%	33.3%	29.0%
Impersonation	30	59	13	343	371	275	67.6%	63.6%	60.0%
Food/Lodging/Transportation	18	13	16	247	225	227	64.0%	62.7%	60.8%
Defraud Person (Under/Over)	107	147	71	1372	1452	1433	46.2%	42.3%	35.4%
Other Fraud	13	15	4	242	168	86	71.5%	67.9%	61.6%
TOTAL	213	293	128	2954	2881	2547	54.8%	50.7%	45.2%
Other Property Crimes									
Mischief Over \$5,000	8	4	4	68	68	73	30.9%	23.5%	20.5%
Mischief Under \$5,000	224	210	155	3085	2954	2610	31.5%	25.6%	25.1%
Other Mischief	119	86	71	1491	1215	1082	86.2%	84.2%	79.4%
Vehicle Damage	227	179	181	3666	3369	3111	9.4%	8.8%	7.7%
Arson	7	7	11	188	205	182	11.7%	19.0%	16.5%
TOTAL	585	486	422	8498	7811	7058	31.1%	27.3%	25.5%
TOTAL PROPERTY CRIMES	3016	2857	2561	41918	40412	39993	27.4%	25.2%	21.2%

Calgary Crime Statistics - CUMULATIVE NUMBERS

DECEMBER 2013

OTHER CRIMINAL CODE	Current Month			Year To Date			Accumulated To Date		
	Number Of Offences			Number Of Offences			Percentage Cleared		
	2011	2012	2013	2011	2012	2013	2011	2012	2013
Vice									
Impede/Communicate	0	0	0	103	62	92	100.0%	100.0%	100.0%
Live on Avails	0	0	0	8	3	8	87.5%	66.7%	100.0%
Bawdy House	1	3	0	11	6	7	100.0%	100.0%	100.0%
Procure/Solicit	0	2	0	14	8	25	92.9%	87.5%	92.0%
TOTAL	1	5	0	136	79	132	98.5%	97.5%	98.5%
Gaming									
Gaming House	0	0	0	0	0	1	-	-	100.0%
Betting	0	0	0	0	0	0	-	-	-
Lotteries/Games	0	0	0	0	0	0	-	-	-
Other	0	0	0	1	2	0	0.0%	100.0%	-
TOTAL	0	0	0	1	2	1	0.0%	100.0%	100.0%
Weapon Related									
Prohibited	9	14	10	180	170	131	100.0%	100.0%	100.0%
Restricted	15	21	15	226	234	208	99.6%	100.0%	99.5%
Explosives	0	0	0	4	1	1	100.0%	100.0%	100.0%
Possess Prohibited	0	0	0	0	0	0	-	-	-
Use Firearm in Offence	0	2	0	5	6	6	100.0%	100.0%	100.0%
FAC Related	4	7	4	83	80	82	100.0%	100.0%	100.0%
Other	44	43	24	717	589	515	98.5%	99.0%	98.1%
TOTAL	72	87	53	1215	1080	943	99.0%	99.4%	98.8%
Miscellaneous									
Counterfeiting	12	19	5	366	249	126	6.8%	5.6%	3.2%
Obstruct Peace Officer	54	51	35	643	605	503	99.5%	99.3%	98.4%
Bail Violation/Fail to attend	301	216	211	3306	3236	3150	100.0%	100.0%	99.8%
Fail to comply with Probation	39	77	40	755	683	610	100.0%	100.0%	100.0%
Escape Custody/UAL	17	17	13	184	218	192	98.9%	99.5%	100.0%
Attempt to commit/accessory	6	0	1	37	36	26	97.3%	88.9%	96.2%
Miscellaneous	138	103	85	1867	1522	1440	78.6%	72.7%	71.1%
TOTAL	567	483	390	7158	6549	6047	89.6%	89.9%	90.9%
TOTAL OTHER CRIMINAL CODE	640	575	443	8510	7710	7123	91.0%	91.3%	92.1%
TOTAL CRIMINAL CODE (EXCL. TRAFFIC)	4320	4007	3528	58684	55895	54673	41.9%	39.3%	35.6%

Calgary Crime Statistics - CUMULATIVE NUMBERS

DECEMBER 2013

SELECTED OTHER	Current Month			Year To Date			Accumulated To Date		
	Number Of Offences			Number Of Offences			Percentage Cleared		
	2011	2012	2013	2011	2012	2013	2011	2012	2013
Criminal Code Traffic									
Impaired Causing Death	0	1	0	3	4	1	100.0%	100.0%	100.0%
Impaired Causing Bodily Harm	0	2	0	9	11	5	88.9%	100.0%	100.0%
Impaired > .08	100	102	84	1270	1271	1056	99.9%	100.0%	100.0%
Impaired Driving	129	126	111	1657	1624	1367	100.0%	100.0%	99.9%
Fail/Refuse	37	41	31	458	436	370	100.0%	100.0%	100.0%
Dangerous Causing Death	0	1	0	4	7	3	100.0%	100.0%	100.0%
Dangerous Operation Causing Harm	0	1	0	16	7	11	87.5%	100.0%	100.0%
Dangerous Operation of Motor Vehicle	9	6	4	149	128	130	98.7%	99.2%	99.2%
Impaired Driving (Drugs)	1	0	0	5	0	1	100.0%	-	100.0%
TOTAL	276	280	230	3571	3488	2944	99.8%	100.0%	99.9%
Drugs									
CDSA/NCA/FDA Possession	75	79	56	954	1025	1037	99.9%	100.0%	99.9%
CDSA/NCA/FDA Trafficking	14	13	11	297	297	204	100.0%	100.0%	100.0%
CDSA/NCA/FDA Possession for Purpose	35	22	25	512	410	455	99.8%	100.0%	100.0%
CDSA/NCA Importation/Export	0	0	0	0	5	2	-	100.0%	100.0%
CDSA/NCA Cultivation/Production	5	1	0	80	51	34	100.0%	100.0%	100.0%
CDSA/NCA/FDA Prop./Proc. from Trafficking	0	0	0	0	0	0	-	-	-
TOTAL	129	115	92	1843	1788	1732	99.9%	100.0%	99.9%
Selected Non Criminal Code Incidents									
Accidental/Sudden Death	70	81	79	656	750	734	N/A	N/A	N/A
Missing Persons	264	197	179	3632	3177	2832	N/A	N/A	N/A
Court Order	106	78	62	1184	1110	1231	N/A	N/A	N/A
Domestic Information	1108	1127	1100	12565	12765	13120	N/A	N/A	N/A
Domestic Information Standby	69	68	57	864	884	886	N/A	N/A	N/A
TOTAL	1617	1551	1477	18901	18686	18803	N/A	N/A	N/A
Statutes									
Federal	29	34	14	444	399	290	100.0%	100.0%	99.3%
Provincial	30	36	19	409	442	433	99.3%	99.1%	99.5%
Municipal	9	11	4	163	112	88	100.0%	99.1%	100.0%
TOTAL	68	81	37	1016	953	811	99.7%	99.5%	99.5%
TOTAL SELECTED OTHER	2090	2027	1836	25331	24915	24290	99.8%	99.9%	99.8%