

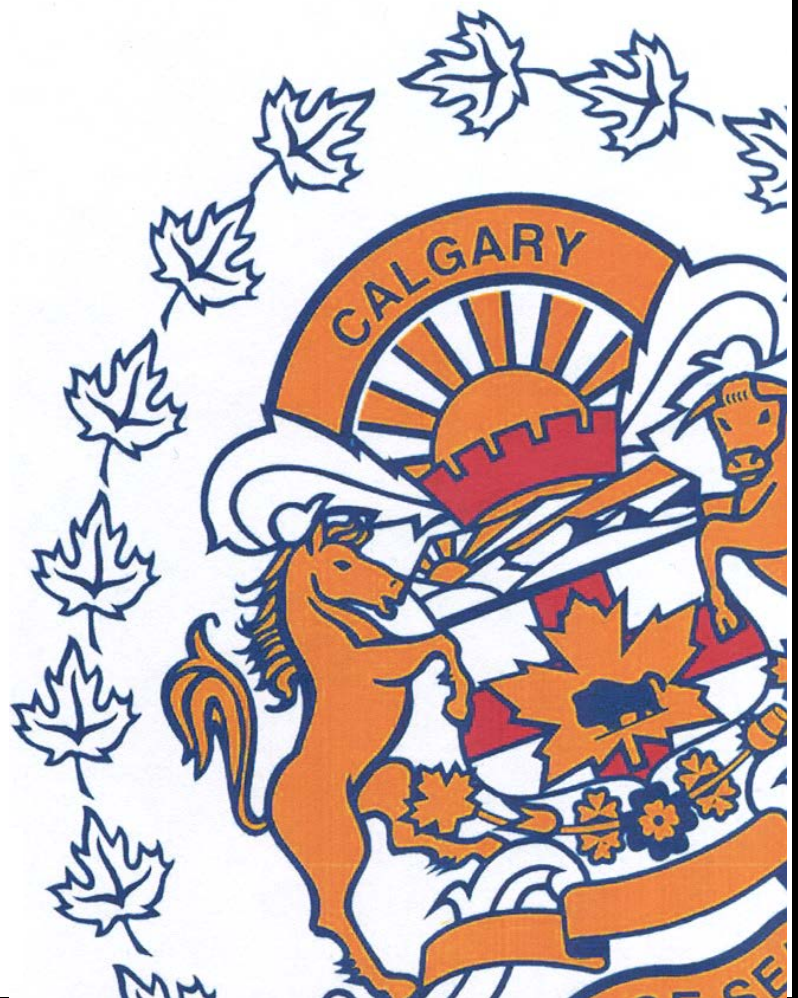
# August

## Monthly Statistical

# REPORT

# 2014

Compiled by: Centralized Analysis Unit  
Crime and Intelligence Analytical Section  
Strategic Services Division  
© Calgary Police Service 2014



*The Calgary Police Service provides this information in good faith but it provides no warranty, nor accepts any liability arising from any incorrect, incomplete or misleading information.*

# TABLE OF CONTENTS

	Page
<b>Monthly Highlights - STATIC NUMBER COMPARISON</b>	<b>1</b>
<b>Calgary Crime Statistics – STATIC NUMBERS</b>	
<b>Person Crimes</b>	<b>2</b>
<b>Property Crimes</b>	<b>3</b>
<b>Other Criminal Code/Selected Other/Drug Offences</b>	<b>4</b>
<b>Calgary Disorder Statistics – CALLS FOR SERVICE</b>	<b>5</b>
<b>Calgary Traffic Collisions - CUMULATIVE NUMBERS</b>	<b>6</b>
<b>Calgary Crime Statistics - CUMULATIVE NUMBERS</b>	<b>7</b>

---

## REPORT NOTES

Most of the statistical data in this report are derived from the Police Information Management System (PIMS) and compiled by the Centralized Analysis Unit. The numbers reported may change on a daily basis due to the dynamic nature of offences being reported and cleared. Disorder data is derived from the CAD system and is static.

To a large extent, the data in this report are based on accumulated to date information. **(Except for the Monthly Highlights which are based on static information (i.e.: a snap-shot in time).**

- For offences based on accumulated to date information, the number of offences recorded may be higher than previously reported (i.e. in previous statistical reports) due to late reporting. Although this does not greatly affect the number of occurrences for all offences, for some categories it may be as high as a 30-40% increase. The published data for the current period can therefore be expected to increase as time passes. As a result, readers should exercise caution when making comparisons between historical data and current data (i.e. previous year to this year) as data for the historic period will now include late reported offences, but data for the current period will not at this time. To achieve an effective comparison, current data should be evaluated against the originally published data for the historic period.
- Likewise, late reporting affects the number and percentage of offences cleared. Cases are often cleared months and sometimes years later. Consequently, clearances for previous years may appear to be much higher than those of the present year. Cases “cleared by charge” and those “cleared otherwise” are included in these totals.
- For offences based on “static” or “snap-shot” information, data totals will only reflect the number of offences reported in the original publication. They are not updated. Although late reporting may occur, and offences may continue to be cleared as time passes, these new events are not taken into account when preparing this statistical report.

A single incident may result in multiple offences, with each unique *Criminal Code* violation within the incident being counted as an offence. Furthermore, person crime offences are typically counted by the number of victims. Please note that offences are assigned to the month in which the offence "started", not the month they were reported or cleared. Also note that “attempted” incidents are included in these totals. For a more detailed explanation of the Offence counting procedure, please contact the Centralized Analysis Unit.

## Monthly Highlights – STATIC NUMBER COMPARISON

To reduce the impact of late reporting, comments on this page are a comparison between the CPS August 2014 Statistical Report and the CPS August 2013 Statistical Report. To achieve an effective comparison, current data should be evaluated against the originally published data for the historic period.

### AUGUST 2014

#### PERSON CRIME

- ◆ Reported **person crimes** for the month of August 2014 increased 17.7% when compared to August 2013 (744 offences in August 2014 vs. 632 in August 2013). This increase is almost identical when compared to the five year average (17.5%).
- ◆ Total **robbery** offences for the month of August 2014 decreased 11.3% when compared to August 2013 (71 offences in August 2014 vs. 80 in August 2013); During August 2014 there were:
  - 4 **financial robberies** (compared to 4 in August 2013);
  - 15 **commercial robberies** (compared to 16 in August 2013);
  - 49 **person robberies** (compared to 57 in August 2013); and
  - 3 **home invasions** (compared to 3 in August 2013).
- ◆ **Assaults** increased 20.9% this month (566 offences in August 2014 vs. 468 in August 2013).
- ◆ **Sex offences** increased 9.8% this month (67 in August 2014 compared to 61 in August 2013).

#### PROPERTY CRIME

- ◆ Reported **property crimes** this month decreased by 0.5% when compared to August 2013 (3495 offences in August 2014 compared to 3513 in August 2013). Property crimes remained well below the five year average by -6.7%.
- ◆ **Vehicle theft** (including attempts) decreased 3.7% this month when compared to August 2013 (393 offences in August 2014 vs. 408 in August 2013).
- ◆ **Theft** offences decreased 0.7% this month when compared to August 2013 (1826 offences in August 2014 vs. 1838 in August 2013).
- ◆ **Break and enter** offences this month decreased 9.7% when compared to August 2013 (492 offences this month compared to 545 in August 2013).
  - **Residential break and enter** offences this month increased 13.8% when compared to August 2013 (273 offences in August 2014 vs. 240 in August 2013);
  - **Commercial break and enter** offences decreased 36.9% this month when compared to August 2013 (125 offences in August 2014 vs. 198 in August 2013).
- ◆ **Fraud related** offences increased 12.9% this month (140 offences in August 2014 vs. 124 in August 2013).

#### DISORDER

- ◆ August 2014 saw 8534 disorder incidents, a 4.4% decline from volume recorded in 2013 (392 fewer incidents) and was relatively on par with the five year average (0.3%, 26 additional incidents).
- ◆ A similar volume of physical disorder was recorded this August in comparison to last August (741 incidents this month vs. 737 in August 2013); however, an 18.7% decline was noted against the five year average (N=911 incidents). Similar to last month, **property damage** continued to note the largest numerical decline from average (-24.1%, 170 fewer incidents), however, volume was similar this month to last August (0.5%, 4 incidents).
- ◆ A 4.8% reduction (396 fewer incidents) of social disorder was observed this August in comparison to August 2013 while a 2.6% increase (197 additional incidents) was noted against the five year average. The most noteworthy event type declines both against volume recorded last August and their respective historical averages include **noise complaints** and **party complaints**; both of these event types also reached six year lows YTD. **Unwanted guests** and **suspicious persons** saw the most notable increases against average, although saw a less noteworthy increase against volume recorded within August 2013.

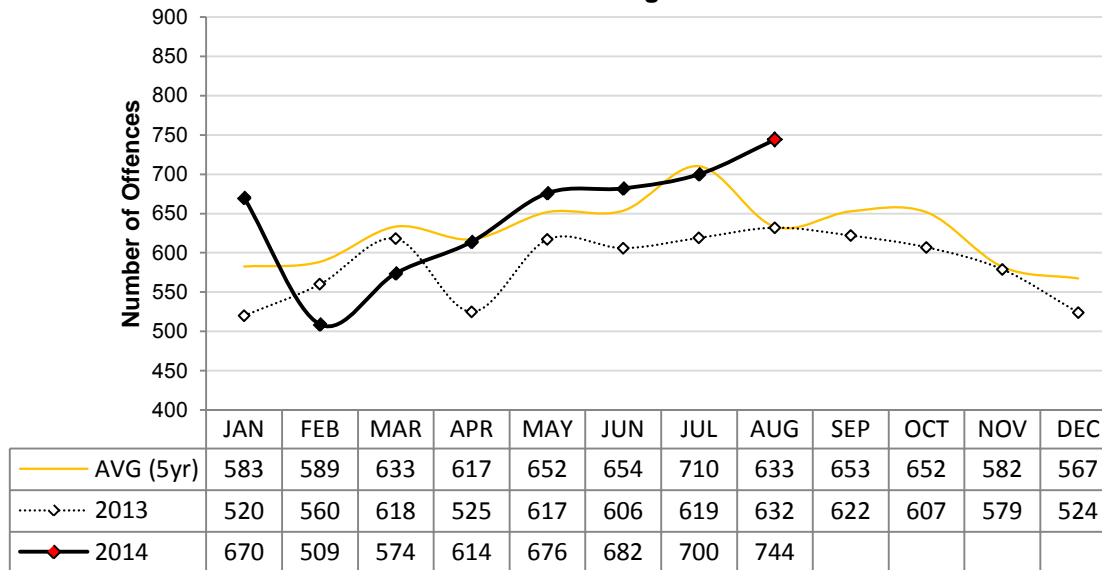
## Calgary Person Crime Statistics – STATIC NUMBERS

The static crime numbers on this page are derived from historical Calgary Police Service Monthly Statistical Reports. These statistics are used when writing the Monthly Highlights page in order to make a fair comparison using data which has not been allowed to increase due to late reporting of crime. Using static numbers allows us to compare crime levels at a specific point in time and make an accurate determination of increases or decreases. The cumulative crime numbers (pages 7 – 10) are statistics derived from the CPS Police Information Management System. P.I.M.S. cannot produce static numbers and therefore the cumulative numbers reflect any late reporting of crime. To achieve an effective comparison, current data should be evaluated against the originally published data for the historic period. \*Due to the dynamic nature of ongoing homicide investigations these numbers may have been manually updated to reflect the current homicide count. Due to manually updating, it's possible 1 or more homicides may be reflected within the assault category. The homicide counts are provided by the homicide unit.

### August 2014

	Current Month Number Of Offences			Year To Date Number Of Offences			
	2013	2014	% Change (2013-2014)	2013	2014	% Change (2013-2014)	% Cleared 2014
<b>PERSON CRIMES</b>							
Homicide*	2	1	-50.0%	17	23	35.3%	69.6%
Other Offences Causing Death	0	0	N/A	0	0	N/A	N/A
Attempted Homicide	2	1	-50.0%	10	4	-60.0%	50.0%
Sex Offences	61	67	9.8%	515	530	2.9%	28.1%
<b>Robbery:</b>							
Financial	4	4	0.0%	20	21	5.0%	61.9%
Commercial	16	15	-6.3%	101	130	28.7%	36.9%
Person	57	49	-14.0%	402	409	1.7%	21.5%
Home Invasion	3	3	0.0%	30	35	16.7%	20.0%
<b>Total Robbery</b>	<b>80</b>	<b>71</b>	<b>-11.3%</b>	<b>553</b>	<b>595</b>	<b>7.6%</b>	<b>26.2%</b>
<b>Assault:</b>							
Level 3 - Aggravated	8	5	-37.5%	85	70	-17.6%	65.7%
Level 2 - Weapon/Bodily Harm	136	133	-2.2%	953	932	-2.2%	57.2%
Level 1 - Common Assault	306	405	32.4%	2411	2876	19.3%	69.5%
Assault Police Officer	17	15	-11.8%	150	110	-26.7%	100.0%
Discharge Firearm with Intent	0	3	N/A	10	12	20.0%	25.0%
Other Assaults	1	5	400.0%	11	17	54.5%	88.2%
<b>Total Assault</b>	<b>468</b>	<b>566</b>	<b>20.9%</b>	<b>3620</b>	<b>4017</b>	<b>11.0%</b>	<b>67.3%</b>
Misc Person Crimes	19	38	100.0%	289	283	-2.1%	56.9%
<b>TOTAL PERSON CRIMES</b>	<b>632</b>	<b>744</b>	<b>17.7%</b>	<b>5004</b>	<b>5452</b>	<b>9.0%</b>	<b>58.5%</b>

**Person Crime-Static Numbers  
YTD Jan 01 to Aug 31 2014**



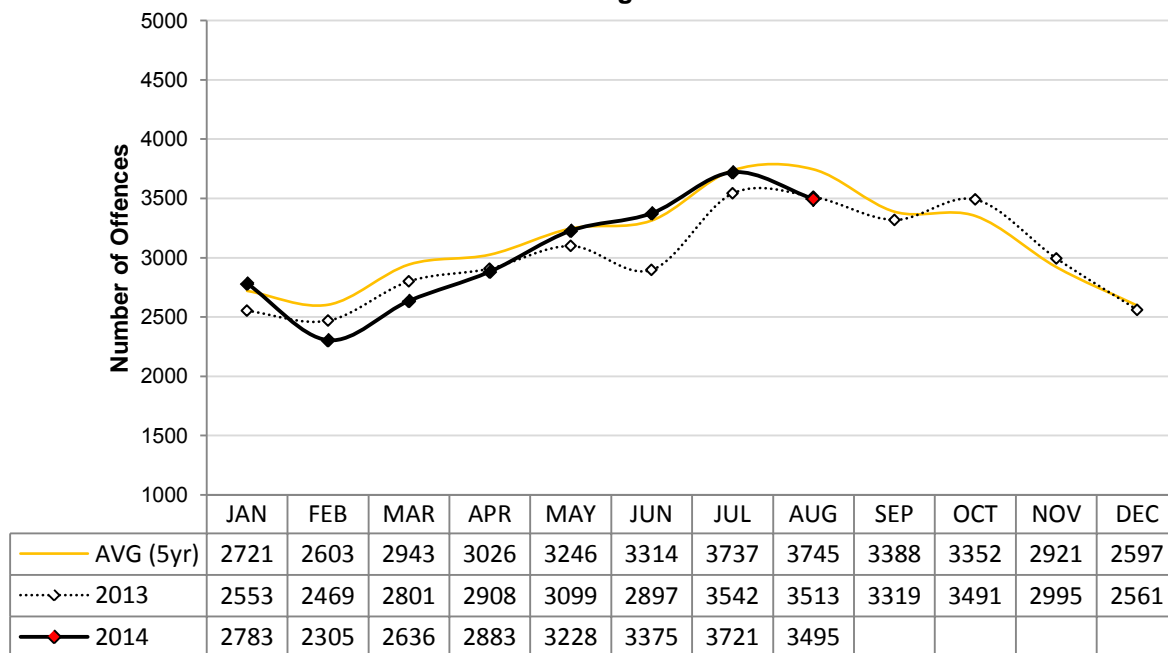
## Calgary Property Crime Statistics – STATIC NUMBERS

The static crime numbers on this page are derived from historical Calgary Police Service Monthly Statistical Reports. These statistics are used when writing the Monthly Highlights page in order to make a fair comparison using data which has not been allowed to increase due to late reporting of crime. Using static numbers allows us to compare crime levels at a specific point in time and make an accurate determination of increases or decreases. The cumulative crime numbers (pages 7 – 10) are statistics derived from the CPS Police Information Management System. P.I.M.S. cannot produce static numbers and therefore the cumulative numbers reflect any late reporting of crime. To achieve an effective comparison, current data should be evaluated against the originally published data for the historic period.

### August 2014

	Current Month Number Of Offences			Year To Date Number Of Offences			
	2013	2014	% Change (2013-2014)	2013	2014	% Change (2013-2014)	% Cleared 2014
<b>PROPERTY CRIMES</b>							
<b>Break and Enter:</b>							
<i>Residential B&amp;E</i>	240	273	13.8%	1483	1700	14.6%	13.2%
<i>Commercial B&amp;E</i>	198	125	-36.9%	1267	1277	0.8%	13.2%
<i>Other B&amp;E</i>	104	86	-17.3%	708	798	12.7%	14.5%
<i>Unlawfully in Residence</i>	3	8	166.7%	22	40	81.8%	77.5%
<b>Total Break and Enter</b>	<b>545</b>	<b>492</b>	<b>-9.7%</b>	<b>3480</b>	<b>3815</b>	<b>9.6%</b>	<b>14.2%</b>
<b>Theft</b>	<b>1838</b>	<b>1826</b>	<b>-0.7%</b>	<b>12918</b>	<b>13026</b>	<b>0.8%</b>	<b>24.3%</b>
<b>Vehicle Theft (including attempts)</b>	<b>408</b>	<b>393</b>	<b>-3.7%</b>	<b>3262</b>	<b>3055</b>	<b>-6.3%</b>	<b>10.7%</b>
<b>Fraud Related</b>	<b>124</b>	<b>140</b>	<b>12.9%</b>	<b>1669</b>	<b>1944</b>	<b>16.5%</b>	<b>35.0%</b>
<b>Other Property Crimes</b>	<b>598</b>	<b>644</b>	<b>7.7%</b>	<b>4601</b>	<b>4633</b>	<b>0.7%</b>	<b>26.9%</b>
<b>TOTAL PROPERTY CRIMES</b>	<b>3513</b>	<b>3495</b>	<b>-0.5%</b>	<b>25930</b>	<b>26473</b>	<b>2.1%</b>	<b>22.5%</b>

**Property Crime-Static Numbers  
YTD Jan 01 to Aug 31 2014**



## Calgary Other Crime Statistics – STATIC NUMBERS

The static crime numbers on this page are derived from historical Calgary Police Service Monthly Statistical Reports. These statistics are used when writing the Monthly Highlights page in order to make a fair comparison using data which has not been allowed to increase due to late reporting of crime. Using static numbers allows us to compare crime levels at a specific point in time and make an accurate determination of increases or decreases. The cumulative crime numbers (pages 7 – 10) are statistics derived from the CPS Police Information Management System. P.I.M.S. cannot produce static numbers and therefore the cumulative numbers reflect any late reporting of crime. To achieve an effective comparison, current data should be evaluated against the originally published data for the historic period.

### August 2014

	Current Month Number Of Offences			Year To Date Number Of Offences			% Cleared 2014
	2013	2014	% Change (2013-2014)	2013	2014	% Change (2013-2014)	
<b>OTHER CRIMINAL CODE</b>							
Vice	5	0	-100.0%	56	57	1.8%	98.2%
Gaming	0	0	N/A	0	1	N/A	100.0%
Weapon Related	73	64	-12.3%	660	577	-12.6%	99.3%
Misc	467	583	24.8%	4034	4490	11.3%	89.0%
<b>TOTAL OTHER CRIMINAL CODE</b>	<b>545</b>	<b>647</b>	<b>18.7%</b>	<b>4750</b>	<b>5125</b>	<b>7.9%</b>	<b>90.3%</b>
<b>TOTAL OVERALL CRIMINAL CODE (excluding traffic)</b>	<b>4690</b>	<b>4886</b>	<b>4.2%</b>	<b>35684</b>	<b>37050</b>	<b>3.8%</b>	<b>37.2%</b>
<b>SELECTED OTHER</b>							
Criminal Code Traffic	223	203	-9.0%	1972	1809	-8.3%	100.0%
Drugs	125	129	3.2%	1141	1293	13.3%	100.0%
<b>Selected Non Criminal Code:</b>							
<i>Accidental/Sudden Death</i>	51	49	-3.9%	474	456	-3.8%	N/A
<i>Missing Persons</i>	238	272	14.3%	2023	1862	-8.0%	N/A
<i>Court Order</i>	100	109	9.0%	869	785	-9.7%	N/A
<i>Domestic Information</i>	1155	1169	1.2%	8721	8492	-2.6%	N/A
<i>Domestic Information Standby</i>	71	97	36.6%	619	548	-11.5%	N/A
<b>Total Selected Non Criminal Code</b>	<b>1615</b>	<b>1696</b>	<b>5.0%</b>	<b>12706</b>	<b>12143</b>	<b>-4.4%</b>	<b>N/A</b>
<b>Statutes (Federal/Provincial/Municipal)</b>	<b>65</b>	<b>49</b>	<b>-24.6%</b>	<b>584</b>	<b>552</b>	<b>-5.5%</b>	<b>99.5%</b>

### Number of Drug Offences Year To Date

	2010	2011	2012	2013	2014	Trend
Demand	705	634	660	683	765	
Supply	789	604	542	458	528	
<b>Total</b>	<b>1494</b>	<b>1238</b>	<b>1202</b>	<b>1141</b>	<b>1293</b>	
	<b>Drug Type</b>					
Cannabis	844	776	688	693	727	
Cocaine/Crack	554	350	411	336	415	
Heroin	4	15	18	23	33	
All Other Drugs	92	97	85	89	118	
<b>Total</b>	<b>1494</b>	<b>1238</b>	<b>1202</b>	<b>1141</b>	<b>1293</b>	

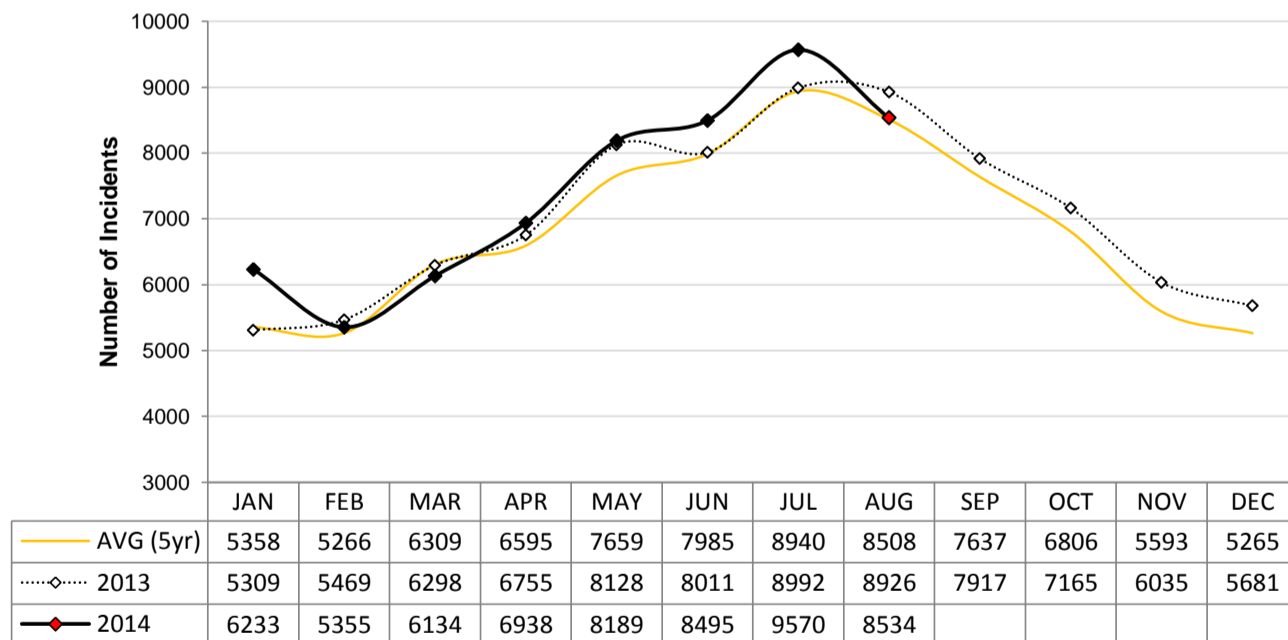
## Calgary Disorder Statistics – CALLS FOR SERVICE

In addition to monitoring crime levels, the Calgary Police Service uses a range of incident types to record levels of "Social & Physical Disorder". The incident types selected for this disorder index are those which can have a negative impact on citizens' quality of life and perception of safety, particularly in public places. These incidents do not tend to be represented well in "traditional" crime statistics which have a propensity to focus more on person and property crime.

### AUGUST 2014 PUBLIC GENERATED CALLS FOR SERVICE

	Current Month				Year To Date			
	2013	2014	N Change (2013 to 2014)	% Change (2013-2014)	2013	2014	N Change (2013 to 2014)	% Change (2013-2014)
<b>SOCIAL DISORDER</b>								
Disturbance	1058	914	-144	-13.6%	6931	6242	-689	-9.9%
Drugs	241	216	-25	-10.4%	1620	1527	-93	-5.7%
Indecent Act	81	67	-14	-17.3%	427	461	34	8.0%
Intoxicated Person	676	528	-148	-21.9%	4177	3776	-401	-9.6%
Juvenile Complaint	196	171	-25	-12.8%	1176	1093	-83	-7.1%
Landlord Tenant	243	242	-1	-0.4%	1710	1918	208	12.2%
Mental Health Concern	273	328	55	20.1%	1874	2301	427	22.8%
Neighbour Dispute	215	234	19	8.8%	1239	1472	233	18.8%
Noise Complaint	827	679	-148	-17.9%	4439	4054	-385	-8.7%
Party Complaint	292	282	-10	-3.4%	1503	1392	-111	-7.4%
Possible Gunshots	128	123	-5	-3.9%	578	500	-78	-13.5%
Prostitution	41	26	-15	-36.6%	252	195	-57	-22.6%
Prowler	74	83	9	12.2%	360	441	81	22.5%
Speeder	83	82	-1	-1.2%	511	488	-23	-4.5%
Suspicious Auto	835	809	-26	-3.1%	5639	5920	281	5.0%
Suspicious Person	1754	1763	9	0.5%	10373	11122	749	7.2%
Threats	255	257	2	0.8%	1977	1875	-102	-5.2%
Unwanted Guest	917	989	72	7.9%	7605	9061	1456	19.1%
<b>TOTAL SOCIAL DISORDER</b>	<b>8189</b>	<b>7793</b>	<b>-396</b>	<b>-4.8%</b>	<b>52391</b>	<b>53838</b>	<b>1447</b>	<b>2.8%</b>
<b>PHYSICAL DISORDER</b>								
Abandoned Auto	28	35	7	25.0%	215	239	24	11.2%
Fire	179	170	-9	-5.0%	1385	1308	-77	-5.6%
Property Damage*	530	536	6	1.1%	3897	4063	166	4.3%
<b>TOTAL PHYSICAL DISORDER</b>	<b>737</b>	<b>741</b>	<b>4</b>	<b>0.5%</b>	<b>5497</b>	<b>5610</b>	<b>113</b>	<b>2.1%</b>
<b>TOTAL DISORDER</b>	<b>8926</b>	<b>8534</b>	<b>-392</b>	<b>-4.4%</b>	<b>57888</b>	<b>59448</b>	<b>1560</b>	<b>2.7%</b>

**Public Generated Disorder Calls for Service  
YTD Jan 01 to August 31 2014**



**\*Data Notes:**

- 1) Dispatched, Advised, Call Back and Web Calls are included.
- 2) 225 calls in current month were reported at district front counters (walkins) and are excluded from this dataset.
- 3) Current Month: In addition to the 8,534 public generated calls, officers proactively generated 2,012 calls (these are not included in this report).
- 4) \*The majority of Property Damage calls result in criminal code reports which are counted under Other Property Crimes in this report.

# Calgary Traffic Collisions – CUMULATIVE NUMBERS

AUGUST 2014

	Current Month # of Collisions			Year To Date # of Collisions			Year To Date Rate per 100,000 population		
	2012	2013	2014	2012	2013	2014	2012	2013	2014
Fatal Collisions	4	4	2	24	25	17	2.1	2.2	1.4
Injury Collisions	225	248	212	1723	1759	1824	153.8	152.1	152.6
Property Damage Collisions	2943	3004	2440	24443	25619	27216	2182.0	2214.9	2277.1
e-Collision Reports*	18	21	285	202	229	697	18.0	19.8	58.3
<b>Total Collisions</b>	<b>3190</b>	<b>3277</b>	<b>2939</b>	<b>26392</b>	<b>27632</b>	<b>29754</b>	<b>2356.0</b>	<b>2388.9</b>	<b>2489.5</b>
<i>Parking Lot Collisions</i>	688	699	547	5418	5916	5608	483.7	511.5	469.2
<b>Total Reportable Collisions</b>	<b>2502</b>	<b>2578</b>	<b>2392</b>	<b>20974</b>	<b>21716</b>	<b>24146</b>	<b>1872.3</b>	<b>1877.4</b>	<b>2020.3</b>

Source: Cumulative data; PIMS (September 2014)

NOTE: Total Reportable Collisions exclude collisions along private roadways or public parking lots.

The number of reported traffic collisions may continue to increase over time. Due to data collection and reporting methods, totals for the current month may not be comparable to previous years.

\* e-Collision reporting is a data system which became operational in July 2009. At the time this report was published it was not possible to separate all collisions based on level of severity or to determine whether they occurred in a parking lot. Therefore, as e-Collision reports are completed and entered into the CPS records management system, it is determined whether or not they are reportable, and they are removed from the e-Collision count total and reclassified based on level of severity.

## Top Collision Locations and Primary Cause of Events

Number of Collisions	Location	Primary Cause of Event	Primary Direction of Travel
15	Blackfoot Trail SE & Glenmore Trail SE	Rear End	E
11	Deerfoot Trail NE & Memorial Drive E	Rear End	E
11	Deerfoot Trail NE & 16 Avenue NE	Rear End	S
10	Crowchild Trail SW & Glenmore Trail SW	Rear End	E/S
10	Deerfoot Trail SE & Glenmore Trail SE	Rear End	S
10	Deerfoot Trail SE & Peigan Trail SE	Rear End	S
10	Edmonton Trail NE & 16 Avenue NE	Rear End/Sideswipe	W
8	Bow Trail SW & Sarcee Trail SW	Rear End	S
8	Deerfoot Trail SE & 17 Avenue SE	Rear End	N

Source: Static data; PIMS (October 2014)

When interpreting these data, it is imperative to consider that these figures represent only the number of collisions and they do not account for associated traffic volumes, weather conditions, collision types, driver experience, or any other variables which may or may not be significant factors. The locations denoted might be associated with intersections, on/off ramps, or mid-block locations, which are in close proximity but not necessarily at the exact specified locations. Collisions occurring on private property, such as shopping mall parking lots have been excluded from the data in order to strictly assess intersection related collisions.



# Calgary Crime Statistics - CUMULATIVE NUMBERS

## AUGUST 2014

PERSON CRIMES	Current Month			Year To Date			Accumulated To Date		
	Number Of Offences			Number Of Offences			Percentage Cleared		
	2012	2013	2014	2012	2013	2014	2012	2013	2014
<b>Homicide</b>									
1st Degree .....	0	0	0	4	5	11	50.0%	80.0%	63.6%
2nd Degree .....	2	1	1	4	12	11	100.0%	91.7%	72.7%
Manslaughter .....	1	1	0	1	1	1	100.0%	100.0%	100.0%
Infanticide .....	0	0	0	0	0	0	-	-	-
<b>TOTAL</b>	<b>3</b>	<b>2</b>	<b>1</b>	<b>9</b>	<b>18</b>	<b>23</b>	<b>77.8%</b>	<b>88.9%</b>	<b>69.6%</b>
<b>Other Offences Causing Death</b>									
Criminal Negligence .....	0	0	0	0	0	0	-	-	-
Other Offences Causing Death .....	0	0	0	0	0	0	-	-	-
<b>TOTAL</b>	<b>0</b>	<b>0</b>	<b>0</b>	<b>0</b>	<b>0</b>	<b>0</b>	<b>-</b>	<b>-</b>	<b>-</b>
<b>Attempted Homicide</b>									
Attempted Murder .....	2	2	1	10	7	4	40.0%	71.4%	50.0%
Conspiracy To Commit .....	0	0	0	0	4	0	-	100.0%	-
<b>TOTAL</b>	<b>2</b>	<b>2</b>	<b>1</b>	<b>10</b>	<b>11</b>	<b>4</b>	<b>40.0%</b>	<b>81.8%</b>	<b>50.0%</b>
<b>Sex Offences</b>									
Level 3 Aggravated Sexual Assault .....	0	0	0	0	2	2	-	50.0%	0.0%
Level 2 Weapon/Threat/Bodily Harm .....	0	1	0	1	5	4	0.0%	100.0%	50.0%
Level 1 Sexual Assault .....	56	60	41	417	394	329	29.5%	27.4%	22.5%
Indecent Acts .....	21	16	19	109	100	124	53.2%	46.0%	40.3%
Other .....	5	6	7	84	67	71	58.3%	52.2%	32.4%
<b>TOTAL</b>	<b>82</b>	<b>83</b>	<b>67</b>	<b>611</b>	<b>568</b>	<b>530</b>	<b>37.6%</b>	<b>34.3%</b>	<b>28.1%</b>
<b>Robbery</b>									
Financial .....	1	4	4	19	20	21	84.2%	65.0%	61.9%
Commercial .....	6	17	15	138	102	130	47.8%	38.2%	36.9%
Person .....	48	60	49	419	409	409	28.2%	22.5%	21.5%
Home Invasion .....	2	3	3	24	30	35	25.0%	13.3%	20.0%
Robbery of Firearm .....	0	0	0	0	0	0	-	-	-
<b>TOTAL</b>	<b>57</b>	<b>84</b>	<b>71</b>	<b>600</b>	<b>561</b>	<b>595</b>	<b>34.3%</b>	<b>26.4%</b>	<b>26.2%</b>
<b>Assault</b>									
Level 3 - Aggravated .....	8	9	5	73	86	70	71.2%	75.6%	65.7%
Level 2 - Weapon/Bodily Harm .....	129	143	133	884	968	932	61.3%	60.4%	57.2%
Level 1 - Common Assault .....	278	326	405	2503	2463	2876	69.5%	70.4%	69.5%
Assault Police Officer .....	19	17	15	173	150	110	99.4%	98.7%	100.0%
Discharge Firearm with Intent .....	2	0	3	10	10	12	100.0%	40.0%	25.0%
Other Assaults .....	2	1	5	19	11	17	84.2%	90.9%	88.2%
<b>TOTAL</b>	<b>438</b>	<b>496</b>	<b>566</b>	<b>3662</b>	<b>3688</b>	<b>4017</b>	<b>69.1%</b>	<b>69.0%</b>	<b>67.3%</b>
<b>Miscellaneous Person Crimes</b>									
Kidnapping/Abduction .....	1	2	2	21	20	20	42.9%	45.0%	30.0%
Forcible Confinement .....	10	5	8	80	73	82	76.3%	80.8%	79.3%
Extortion .....	3	2	5	29	19	31	75.9%	63.2%	45.2%
Criminal Harassment .....	18	19	19	200	187	127	66.5%	61.0%	55.9%
Indecent/Harassing Calls .....	6	4	4	23	28	23	30.4%	25.0%	21.7%
<b>TOTAL</b>	<b>38</b>	<b>32</b>	<b>38</b>	<b>353</b>	<b>327</b>	<b>283</b>	<b>65.7%</b>	<b>61.5%</b>	<b>56.9%</b>
<b>TOTAL PERSON CRIMES</b>	<b>620</b>	<b>699</b>	<b>744</b>	<b>5245</b>	<b>5173</b>	<b>5452</b>	<b>61.2%</b>	<b>60.2%</b>	<b>58.5%</b>

# Calgary Crime Statistics - CUMULATIVE NUMBERS

## AUGUST 2014

PROPERTY CRIMES	Current Month			Year To Date			Accumulated To Date		
	Number Of Offences			Number Of Offences			Percentage Cleared		
	2012	2013	2014	2012	2013	2014	2012	2013	2014
<b>Break and Enter</b>									
Residential .....	297	255	273	1780	1516	1699	18.5%	19.1%	13.2%
Commercial .....	152	211	125	1386	1308	1277	15.2%	16.0%	13.2%
Other B&E .....	90	112	86	559	733	798	9.8%	9.8%	14.5%
Unlawfully in Residence .....	3	3	8	31	23	40	87.1%	87.0%	77.5%
B&E Firearms .....	0	0	0	0	0	1	-	-	0.0%
<b>TOTAL</b>	<b>542</b>	<b>581</b>	<b>492</b>	<b>3756</b>	<b>3580</b>	<b>3815</b>	<b>16.6%</b>	<b>16.5%</b>	<b>14.2%</b>
<b>Theft</b>									
Theft Over .....	25	25	22	181	186	158	22.1%	14.5%	9.5%
Theft Under .....	578	776	609	4267	4704	4673	13.1%	9.9%	9.2%
Possession Stolen Property .....	107	88	91	590	644	649	100.0%	100.0%	100.0%
From Vehicle Over .....	16	4	7	86	64	49	1.2%	4.7%	4.1%
From Vehicle Under .....	922	845	760	5532	5453	4834	4.5%	3.8%	2.9%
Shoplift Over .....	0	0	1	6	5	8	33.3%	20.0%	37.5%
Shoplift Under .....	325	293	336	2637	2305	2655	78.8%	73.6%	72.6%
<b>TOTAL</b>	<b>1973</b>	<b>2031</b>	<b>1826</b>	<b>13299</b>	<b>13361</b>	<b>13026</b>	<b>26.5%</b>	<b>22.7%</b>	<b>24.3%</b>
<b>Vehicle Theft</b>									
Theft Over .....	332	352	317	2453	2786	2556	10.9%	9.1%	9.8%
Theft Under .....	45	64	59	312	421	406	22.1%	19.5%	18.2%
Attempted .....	14	20	17	86	111	93	1.2%	1.8%	2.2%
<b>TOTAL</b>	<b>391</b>	<b>436</b>	<b>393</b>	<b>2851</b>	<b>3318</b>	<b>3055</b>	<b>11.9%</b>	<b>10.2%</b>	<b>10.7%</b>
<b>Fraud Related</b>									
False Pretences .....	6	1	2	31	20	13	48.4%	75.0%	53.8%
Forgery/Uttering .....	18	30	15	192	257	217	73.4%	79.0%	55.8%
Forgery-Credit Card .....	25	11	12	205	144	191	35.6%	31.9%	20.9%
Impersonation .....	26	18	24	222	222	298	64.9%	62.2%	38.9%
Food/Lodging/Transportation .....	16	19	16	144	159	150	59.0%	55.3%	63.3%
Defraud Person (Under/Over) .....	115	132	70	920	1070	995	41.7%	40.4%	26.2%
Other Fraud .....	7	6	1	111	65	80	66.7%	63.1%	50.0%
<b>TOTAL</b>	<b>213</b>	<b>217</b>	<b>140</b>	<b>1825</b>	<b>1937</b>	<b>1944</b>	<b>50.2%</b>	<b>49.7%</b>	<b>35.0%</b>
<b>Other Property Crimes</b>									
Mischief Over \$5,000 .....	8	9	5	44	48	62	25.0%	20.8%	17.7%
Mischief Under \$5,000 .....	243	281	222	2055	1977	1771	24.0%	32.4%	25.6%
Other Mischief .....	102	149	99	814	934	722	85.9%	85.4%	82.4%
Vehicle Damage .....	318	316	304	2443	2102	1947	8.4%	8.3%	8.9%
Arson .....	29	13	14	136	113	131	25.0%	22.1%	11.5%
<b>TOTAL</b>	<b>700</b>	<b>768</b>	<b>644</b>	<b>5492</b>	<b>5174</b>	<b>4633</b>	<b>26.3%</b>	<b>31.9%</b>	<b>26.9%</b>
<b>TOTAL PROPERTY CRIMES</b>	<b>3819</b>	<b>4033</b>	<b>3495</b>	<b>27223</b>	<b>27370</b>	<b>26473</b>	<b>25.1%</b>	<b>24.1%</b>	<b>22.5%</b>

# Calgary Crime Statistics - CUMULATIVE NUMBERS

## AUGUST 2014

OTHER CRIMINAL CODE	Current Month Number Of Offences			Year To Date Number Of Offences			Accumulated To Date Percentage Cleared		
	2012	2013	2014	2012	2013	2014	2012	2013	2014
<b>Vice</b>									
Impede/Communicate .....	15	0	0	61	29	48	100.0%	100.0%	100.0%
Live on Avails .....	0	2	0	1	9	1	100.0%	100.0%	100.0%
Bawdy House .....	0	1	0	1	7	3	100.0%	100.0%	100.0%
Procure/Solicit .....	1	6	0	4	25	5	75.0%	92.0%	80.0%
<b>TOTAL</b>	<b>16</b>	<b>9</b>	<b>0</b>	<b>67</b>	<b>70</b>	<b>57</b>	<b>98.5%</b>	<b>97.1%</b>	<b>98.2%</b>
<b>Gaming</b>									
Gaming House .....	0	0	0	0	1	0	-	100.0%	-
Betting .....	0	0	0	0	0	0	-	-	-
Lotteries/Games .....	0	0	0	0	0	0	-	-	-
Other .....	0	0	0	1	0	1	100.0%	-	100.0%
<b>TOTAL</b>	<b>0</b>	<b>0</b>	<b>0</b>	<b>1</b>	<b>1</b>	<b>1</b>	<b>100.0%</b>	<b>100.0%</b>	<b>100.0%</b>
<b>Weapon Related</b>									
Prohibited .....	7	8	10	114	93	103	100.0%	100.0%	100.0%
Restricted .....	27	14	15	150	136	150	100.0%	100.0%	100.0%
Explosives .....	0	0	0	1	1	0	100.0%	100.0%	-
Possess Prohibited .....	0	0	0	0	0	0	-	-	-
Use Firearm in Offence .....	1	0	1	1	4	2	100.0%	100.0%	100.0%
FAC Related .....	12	11	4	44	57	56	100.0%	100.0%	100.0%
Other .....	49	44	34	394	388	266	98.5%	98.5%	98.5%
<b>TOTAL</b>	<b>96</b>	<b>77</b>	<b>64</b>	<b>704</b>	<b>679</b>	<b>577</b>	<b>99.1%</b>	<b>99.1%</b>	<b>99.3%</b>
<b>Miscellaneous</b>									
Counterfeiting .....	32	6	18	146	103	161	3.4%	3.9%	3.1%
Obstruct Peace Officer .....	46	42	41	409	366	349	99.0%	98.6%	99.1%
Bail Violation/Fail to attend .....	317	295	322	2192	2087	2397	100.0%	100.0%	100.0%
Fail to comply with Probation .....	68	40	58	447	424	394	100.0%	100.0%	100.0%
Escape Custody/UAL .....	20	17	9	149	131	93	99.3%	100.0%	98.9%
Attempt to commit/accessory .....	0	2	2	30	16	16	90.0%	100.0%	93.8%
Miscellaneous .....	137	113	133	1044	1026	1080	72.7%	72.7%	69.3%
<b>TOTAL</b>	<b>620</b>	<b>515</b>	<b>583</b>	<b>4417</b>	<b>4153</b>	<b>4490</b>	<b>90.2%</b>	<b>90.7%</b>	<b>89.0%</b>
<b>TOTAL OTHER CRIMINAL CODE</b>	<b>732</b>	<b>601</b>	<b>647</b>	<b>5189</b>	<b>4903</b>	<b>5125</b>	<b>91.5%</b>	<b>92.0%</b>	<b>90.3%</b>

<b>TOTAL CRIMINAL CODE (EXCL. TRAFFIC)</b>	<b>5171</b>	<b>5333</b>	<b>4886</b>	<b>37657</b>	<b>37446</b>	<b>37050</b>	<b>39.3%</b>	<b>38.0%</b>	<b>37.2%</b>
--	-------------	-------------	-------------	--------------	--------------	--------------	--------------	--------------	--------------

# Calgary Crime Statistics - CUMULATIVE NUMBERS

## AUGUST 2014

SELECTED OTHER	Current Month			Year To Date			Accumulated To Date		
	Number Of Offences			Number Of Offences			Percentage Cleared		
	2012	2013	2014	2012	2013	2014	2012	2013	2014
<b>Criminal Code Traffic</b>									
Impaired Causing Death .....	0	0	0	3	0	0	100.0%	-	-
Impaired Causing Bodily Harm .....	1	0	0	9	3	2	100.0%	100.0%	100.0%
Impaired > .08 .....	100	89	72	874	729	635	100.0%	100.0%	100.0%
Impaired Driving .....	125	107	94	1115	925	823	100.0%	99.9%	100.0%
Fail/Refuse .....	35	27	28	286	236	244	100.0%	100.0%	100.0%
Dangerous Causing Death .....	0	0	0	6	1	0	100.0%	100.0%	-
Dangerous Operation Causing Harm .....	0	0	0	5	6	2	100.0%	100.0%	100.0%
Dangerous Operation of Motor Vehicle .....	10	12	8	85	95	102	98.8%	98.9%	100.0%
Impaired Driving (Drugs) .....	0	0	1	0	1	1	-	100.0%	100.0%
<b>TOTAL</b>	<b>271</b>	<b>235</b>	<b>203</b>	<b>2383</b>	<b>1996</b>	<b>1809</b>	<b>100.0%</b>	<b>99.9%</b>	<b>100.0%</b>
<b>Drugs</b>									
CDSA/NCA/FDA Possession .....	88	84	79	669	694	765	100.0%	100.0%	100.0%
CDSA/NCA/FDA Trafficking .....	10	17	16	227	145	215	100.0%	100.0%	100.0%
CDSA/NCA/FDA Possession for Purpose .....	34	31	33	291	318	296	100.0%	100.0%	100.0%
CDSA/NCA Importation/Export .....	4	0	0	5	1	0	100.0%	100.0%	-
CDSA/NCA Cultivation/Production .....	3	3	1	45	27	17	100.0%	100.0%	100.0%
CDSA/NCA/FDA Prop./Proc. from Trafficking	0	0	0	0	0	0	-	-	-
<b>TOTAL</b>	<b>139</b>	<b>135</b>	<b>129</b>	<b>1237</b>	<b>1185</b>	<b>1293</b>	<b>100.0%</b>	<b>100.0%</b>	<b>100.0%</b>
<b>Selected Non Criminal Code Incidents</b>									
Accidental/Sudden Death .....	54	51	49	475	474	456	0.0%	0.0%	0.0%
Missing Persons .....	260	241	272	2143	2037	1862	0.0%	0.0%	0.0%
Court Order .....	119	102	109	735	875	785	0.0%	0.0%	0.0%
Domestic Information .....	1122	1183	1169	8445	8809	8492	0.0%	0.0%	0.0%
Domestic Information Standby .....	84	72	97	579	623	548	0.0%	0.0%	0.0%
<b>TOTAL</b>	<b>1639</b>	<b>1649</b>	<b>1696</b>	<b>12377</b>	<b>12818</b>	<b>12143</b>	<b>0.0%</b>	<b>0.0%</b>	<b>0.0%</b>
<b>Statutes</b>									
Federal .....	31	21	16	275	205	226	100.0%	100.0%	100.0%
Provincial .....	41	39	30	293	325	277	99.0%	99.4%	98.9%
Municipal .....	5	7	3	78	63	49	100.0%	100.0%	100.0%
<b>TOTAL</b>	<b>77</b>	<b>67</b>	<b>49</b>	<b>646</b>	<b>593</b>	<b>552</b>	<b>99.5%</b>	<b>99.7%</b>	<b>99.5%</b>
<b>TOTAL SELECTED OTHER</b>	<b>2126</b>	<b>2086</b>	<b>2077</b>	<b>16643</b>	<b>16592</b>	<b>15797</b>	<b>25.6%</b>	<b>22.7%</b>	<b>23.1%</b>