

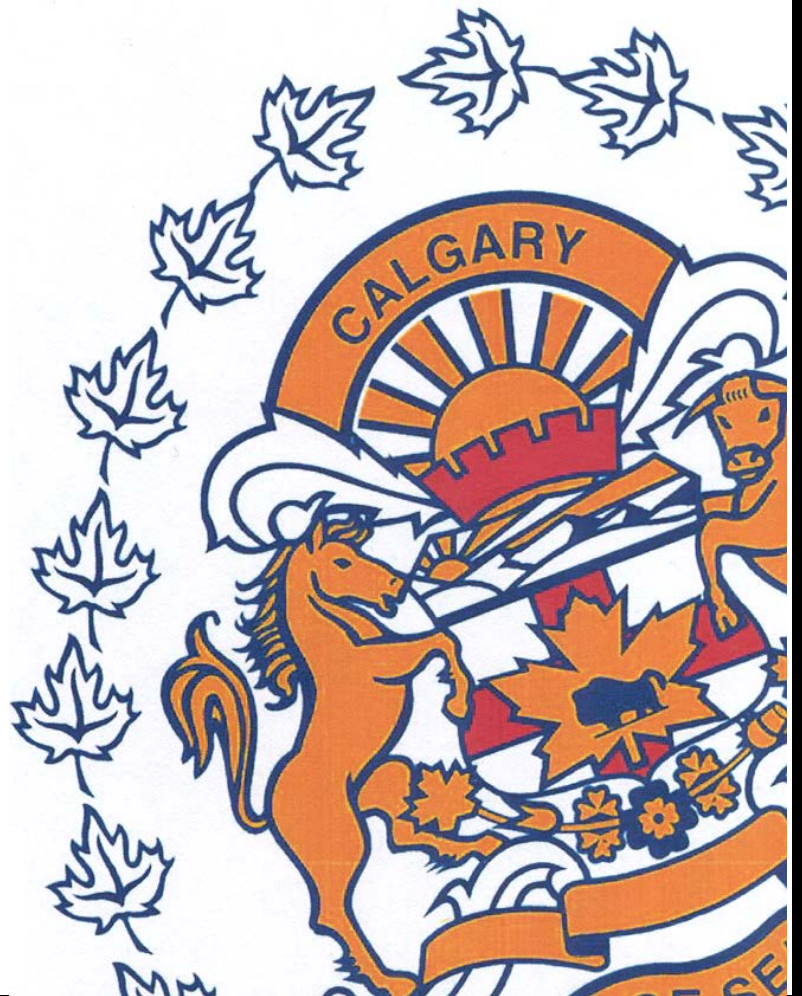
# July

# Monthly Statistical

# REPORT

# 2014

Compiled by: Centralized Analysis Unit  
Crime and Intelligence Analytical Section  
Strategic Services Division  
© Calgary Police Service 2014



*The Calgary Police Service provides this information in good faith but it provides no warranty, nor accepts any liability arising from any incorrect, incomplete or misleading information.*

# TABLE OF CONTENTS

	Page
<b>Monthly Highlights - STATIC NUMBER COMPARISON</b>	<b>1</b>
<b>Calgary Crime Statistics – STATIC NUMBERS</b>	
<b>Person Crimes</b>	<b>2</b>
<b>Property Crimes</b>	<b>3</b>
<b>Other Criminal Code/Selected Other/Drug Offences</b>	<b>4</b>
<b>Calgary Disorder Statistics – CALLS FOR SERVICE</b>	<b>5</b>
<b>Calgary Traffic Collisions - CUMULATIVE NUMBERS</b>	<b>6</b>
<b>Calgary Crime Statistics - CUMULATIVE NUMBERS</b>	<b>7</b>

---

## REPORT NOTES

Most of the statistical data in this report are derived from the Police Information Management System (PIMS) and compiled by the Centralized Analysis Unit. The numbers reported may change on a daily basis due to the dynamic nature of offences being reported and cleared. Disorder data is derived from the CAD system and is static.

To a large extent, the data in this report are based on accumulated to date information. **(Except for the Monthly Highlights which are based on static information (i.e.: a snap-shot in time).**

- For offences based on accumulated to date information, the number of offences recorded may be higher than previously reported (i.e. in previous statistical reports) due to late reporting. Although this does not greatly affect the number of occurrences for all offences, for some categories it may be as high as a 30-40% increase. The published data for the current period can therefore be expected to increase as time passes. As a result, readers should exercise caution when making comparisons between historical data and current data (i.e. previous year to this year) as data for the historic period will now include late reported offences, but data for the current period will not at this time. To achieve an effective comparison, current data should be evaluated against the originally published data for the historic period.
- Likewise, late reporting affects the number and percentage of offences cleared. Cases are often cleared months and sometimes years later. Consequently, clearances for previous years may appear to be much higher than those of the present year. Cases “cleared by charge” and those “cleared otherwise” are included in these totals.
- For offences based on “static” or “snap-shot” information, data totals will only reflect the number of offences reported in the original publication. They are not updated. Although late reporting may occur, and offences may continue to be cleared as time passes, these new events are not taken into account when preparing this statistical report.

A single incident may result in multiple offences, with each unique *Criminal Code* violation within the incident being counted as an offence. Furthermore, person crime offences are typically counted by the number of victims. Please note that offences are assigned to the month in which the offence "started", not the month they were reported or cleared. Also note that “attempted” incidents are included in these totals. For a more detailed explanation of the Offence counting procedure, please contact the Centralized Analysis Unit.

## Monthly Highlights – STATIC NUMBER COMPARISON

To reduce the impact of late reporting, comments on this page are a comparison between the CPS July 2014 Statistical Report and the CPS July 2013 Statistical Report. To achieve an effective comparison, current data should be evaluated against the originally published data for the historic period.

JULY 2014

### PERSON CRIME

- ◆ Reported **person crimes** for the month of July 2014 increased 13.1% when compared to July 2013 (700 offences in July 2014 vs. 619 in July 2013).
- ◆ Total **robbery** offences for the month of July 2014 increased 45.6% when compared to July 2013 (83 offences in July 2014 vs. 57 in July 2013); During July 2014 there were:
  - 0 **financial robberies** (compared to 2 in July 2013);
  - 15 **commercial robberies** (compared to 3 in July 2013);
  - 63 **person robberies** (compared to 50 in July 2013); and
  - 5 **home invasions** (compared to 2 in July 2013).
- ◆ **Assaults** increased 3.8% this month (496 offences in July 2014 vs. 478 in July 2013).
- ◆ **Sex offences** increased 51.8% this month (85 offences in July 2014 compared to 56 in July 2013).

### PROPERTY CRIME

- ◆ Reported **property crimes** this month increased 5.1% when compared to July 2013 (3721 offences in July 2014 compared to 3542 in July 2013).
- ◆ **Vehicle theft** (including attempts) increased 0.9% this month when compared to July 2013 (458 offences in July 2014 vs. 454 in July 2013).
- ◆ **Theft** offences increased 5.9% this month when compared to July 2013 (1949 offences in July 2014 vs. 1841 in July 2013).
- ◆ **Break and enter** offences this month decreased 9.6% when compared to July 2013 (404 offences this month compared to 447 in July 2013).
  - **Residential break and enter** offences this month decreased 13.5% when compared to July 2013 (186 offences in July 2014 vs. 215 in July 2013); and
  - **Commercial break and enter** offences decreased 12% this month when compared to July 2013 (110 offences in July 2014 vs. 125 in July 2013).
- ◆ **Fraud related** offences increased 44.4% this month (205 offences in July 2014 vs. 142 in July 2013).

### DISORDER

- ◆ There were 9570 disorder incidents reported this July, up 6.4% from July 2013 (+578 incidents) and 7.0 % (630 additional incidents) above the five year average.
- ◆ Physical disorder incidents (abandoned auto, fire and property damage) saw a slight increase above volume reported last July (+4.3%, +35 incidents); however, a 10.2% decline (97 fewer incidents) was noted against the five year average. **Property damage** incidents saw the largest reduction from average (-12.2%, 89 fewer incidents) but saw a slight increase against volume recorded last July (+5.1%, 31 additional incidents).
- ◆ Social disorder noted a 6.6% increase against last July (+543 incidents) and was up 9.1% (+727 incidents) compared to the five year average. **Suspicious auto** and **suspicious persons** saw the greatest numerical gains against volume recorded last July as well as against their respective 5 year averages; both of these event types also reached 6 year highs. **Disturbances** saw the most noteworthy reduction this month (-8.5%, 91 fewer incidents) when compared to July 2013; volume was also well below the five year average (-5.4%, 56 fewer incidents). **Intoxicated persons** also saw a substantial decrease this month compared to last July (-10.3%, 76 fewer incidents); however volume remained on par with the five year average (-1.2%, 8 fewer incidents).

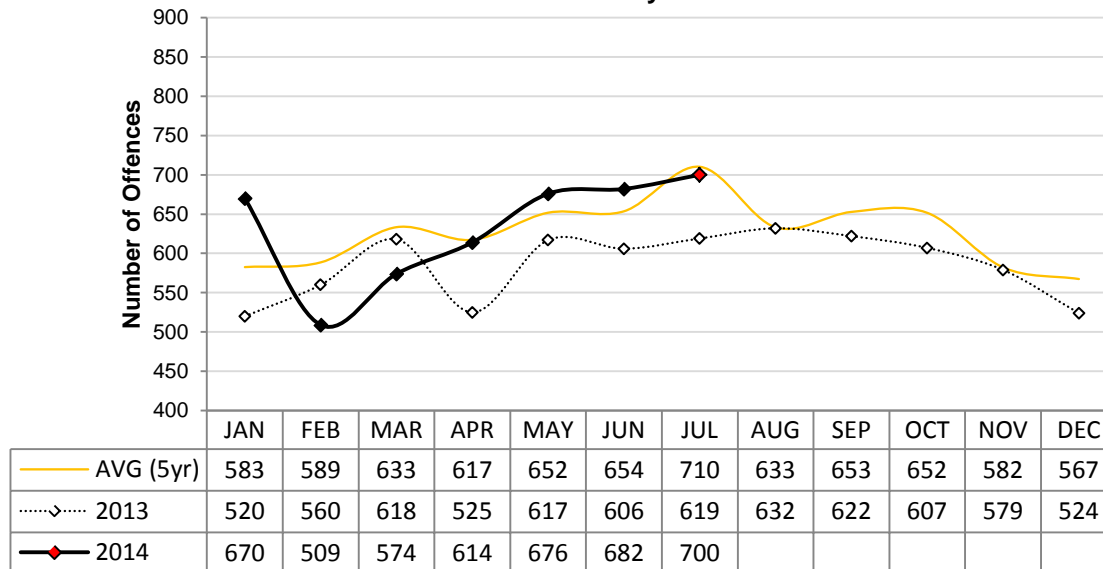
## Calgary Person Crime Statistics – STATIC NUMBERS

The static crime numbers on this page are derived from historical Calgary Police Service Monthly Statistical Reports. These statistics are used when writing the Monthly Highlights page in order to make a fair comparison using data which has not been allowed to increase due to late reporting of crime. Using static numbers allows us to compare crime levels at a specific point in time and make an accurate determination of increases or decreases. The cumulative crime numbers (pages 7 – 10) are statistics derived from the CPS Police Information Management System. P.I.M.S. cannot produce static numbers and therefore the cumulative numbers reflect any late reporting of crime. To achieve an effective comparison, current data should be evaluated against the originally published data for the historic period. \*Due to the dynamic nature of ongoing homicide investigations these numbers may have been manually updated to reflect the current homicide count. Due to manually updating, it's possible 1 or more homicides may be reflected within the assault category. The homicide counts are provided by the homicide unit.

**JULY 2014**

	Current Month Number Of Offences			Year To Date Number Of Offences			
	2013	2014	% Change (2013-2014)	2013	2014	% Change (2013-2014)	% Cleared 2014
<b>PERSON CRIMES</b>							
Homicide*	3	4	33.3%	17	22	29.4%	72.7%
Other Offences Causing Death	0	0	N/A	0	0	N/A	N/A
Attempted Homicide	1	0	-100.0%	8	3	-62.5%	33.3%
Sex Offences	56	85	51.8%	431	449	4.2%	28.1%
<b>Robbery:</b>							
Financial	2	0	-100.0%	16	17	6.3%	70.6%
Commercial	3	15	400.0%	85	115	35.3%	36.5%
Person	50	63	26.0%	344	358	4.1%	22.3%
Home Invasion	2	5	150.0%	27	31	14.8%	19.4%
<b>Total Robbery</b>	<b>57</b>	<b>83</b>	<b>45.6%</b>	<b>472</b>	<b>521</b>	<b>10.4%</b>	<b>26.9%</b>
<b>Assault:</b>							
Level 3 - Aggravated	5	5	0.0%	74	64	-13.5%	62.5%
Level 2 - Weapon/Bodily Harm	134	134	0.0%	809	789	-2.5%	57.0%
Level 1 - Common Assault	308	335	8.8%	2092	2463	17.7%	69.1%
Assault Police Officer	31	18	-41.9%	133	95	-28.6%	100.0%
Discharge Firearm with Intent	0	0	N/A	10	9	-10.0%	0.0%
Other Assaults	0	4	N/A	10	12	20.0%	83.3%
<b>Total Assault</b>	<b>478</b>	<b>496</b>	<b>3.8%</b>	<b>3128</b>	<b>3432</b>	<b>9.7%</b>	<b>66.9%</b>
Misc Person Crimes	24	32	33.3%	253	237	-6.3%	55.3%
<b>TOTAL PERSON CRIMES</b>	<b>619</b>	<b>700</b>	<b>13.1%</b>	<b>4309</b>	<b>4664</b>	<b>8.2%</b>	<b>58.1%</b>

**Person Crime-Static Numbers  
YTD Jan 01 to July 31 2014**



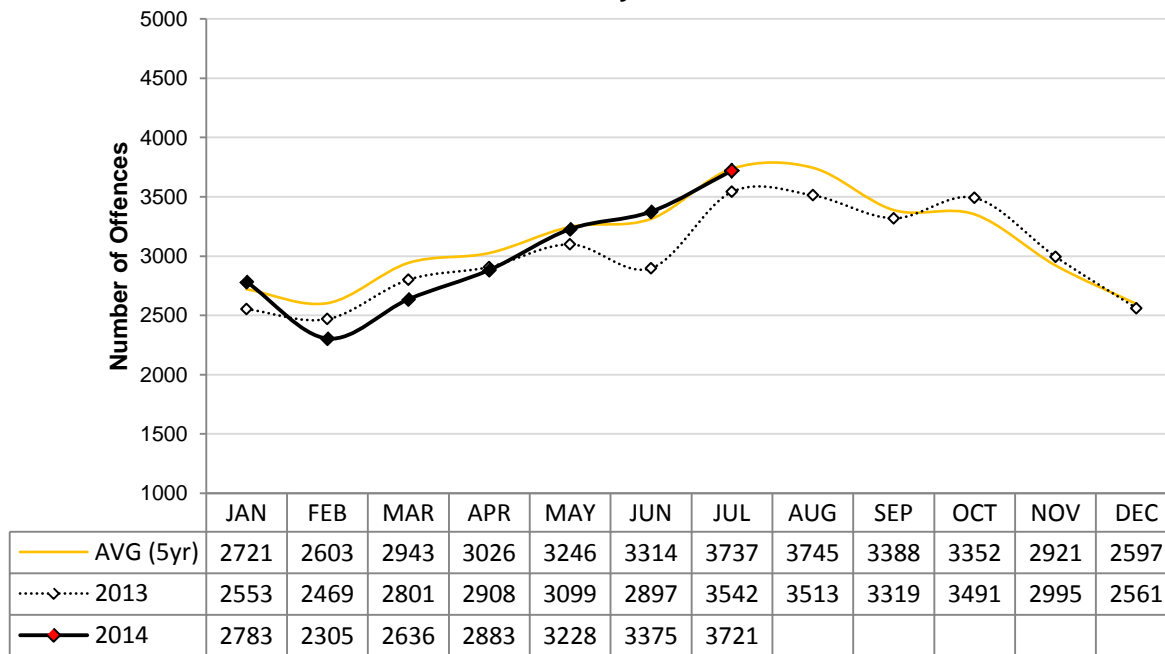
## Calgary Property Crime Statistics – STATIC NUMBERS

The static crime numbers on this page are derived from historical Calgary Police Service Monthly Statistical Reports. These statistics are used when writing the Monthly Highlights page in order to make a fair comparison using data which has not been allowed to increase due to late reporting of crime. Using static numbers allows us to compare crime levels at a specific point in time and make an accurate determination of increases or decreases. The cumulative crime numbers (pages 7 – 10) are statistics derived from the CPS Police Information Management System. P.I.M.S. cannot produce static numbers and therefore the cumulative numbers reflect any late reporting of crime. To achieve an effective comparison, current data should be evaluated against the originally published data for the historic period.

### JULY 2014

	Current Month			Year To Date			
	Number Of Offences			Number Of Offences			
	2013	2014	% Change (2013-2014)	2013	2014	% Change (2013-2014)	% Cleared 2014
<b>PROPERTY CRIMES</b>							
<b>Break and Enter:</b>							
<i>Residential B&amp;E</i>	215	186	-13.5%	1222	1398	14.4%	12.0%
<i>Commercial B&amp;E</i>	125	110	-12.0%	1049	1131	7.8%	11.9%
<i>Other B&amp;E</i>	105	103	-1.9%	597	702	17.6%	16.1%
<i>Unlawfully in Residence</i>	2	5	150.0%	19	30	57.9%	83.3%
<b>Total Break and Enter</b>	<b>447</b>	<b>404</b>	<b>-9.6%</b>	<b>2887</b>	<b>3261</b>	<b>13.0%</b>	<b>13.5%</b>
<b>Theft</b>	<b>1841</b>	<b>1949</b>	<b>5.9%</b>	<b>10893</b>	<b>11083</b>	<b>1.7%</b>	<b>24.6%</b>
<b>Vehicle Theft (including attempts)</b>	<b>454</b>	<b>458</b>	<b>0.9%</b>	<b>2832</b>	<b>2625</b>	<b>-7.3%</b>	<b>10.7%</b>
<b>Fraud Related</b>	<b>142</b>	<b>205</b>	<b>44.4%</b>	<b>1412</b>	<b>1692</b>	<b>19.8%</b>	<b>35.9%</b>
<b>Other Property Crimes</b>	<b>658</b>	<b>705</b>	<b>7.1%</b>	<b>3932</b>	<b>3949</b>	<b>0.4%</b>	<b>26.5%</b>
<b>TOTAL PROPERTY CRIMES</b>	<b>3542</b>	<b>3721</b>	<b>5.1%</b>	<b>21956</b>	<b>22610</b>	<b>3.0%</b>	<b>22.5%</b>

**Property Crime-Static Numbers  
YTD Jan 01 to July 31 2014**



## Calgary Other Crime Statistics – STATIC NUMBERS

The static crime numbers on this page are derived from historical Calgary Police Service Monthly Statistical Reports. These statistics are used when writing the Monthly Highlights page in order to make a fair comparison using data which has not been allowed to increase due to late reporting of crime. Using static numbers allows us to compare crime levels at a specific point in time and make an accurate determination of increases or decreases. The cumulative crime numbers (pages 7 – 10) are statistics derived from the CPS Police Information Management System. P.I.M.S. cannot produce static numbers and therefore the cumulative numbers reflect any late reporting of crime. To achieve an effective comparison, current data should be evaluated against the originally published data for the historic period.

### JULY 2014

	Current Month Number Of Offences			Year To Date Number Of Offences			% Cleared 2014
	2013	2014	% Change (2013-2014)	2013	2014	% Change (2013-2014)	
<b>OTHER CRIMINAL CODE</b>							
Vice	5	1	-80.0%	50	57	14.0%	98.2%
Gaming	0	0	N/A	0	1	N/A	100.0%
Weapon Related	84	65	-22.6%	581	505	-13.1%	99.4%
Misc	443	605	36.6%	3514	3862	9.9%	89.3%
<b>TOTAL OTHER CRIMINAL CODE</b>	<b>532</b>	<b>671</b>	<b>26.1%</b>	<b>4145</b>	<b>4425</b>	<b>6.8%</b>	<b>90.6%</b>
<b>TOTAL OVERALL CRIMINAL CODE (excluding traffic)</b>	<b>4693</b>	<b>5092</b>	<b>8.5%</b>	<b>30410</b>	<b>31699</b>	<b>4.2%</b>	<b>37.3%</b>
<b>SELECTED OTHER</b>							
Criminal Code Traffic	228	222	-2.6%	1738	1594	-8.3%	99.9%
Drugs	171	138	-19.3%	994	1151	15.8%	100.0%
<b>Selected Non Criminal Code:</b>							
Accidental/Sudden Death	61	60	-1.6%	420	407	-3.1%	N/A
Missing Persons	254	236	-7.1%	1782	1578	-11.4%	N/A
Court Order	147	104	-29.3%	767	674	-12.1%	N/A
Domestic Information	1200	1129	-5.9%	7524	7278	-3.3%	N/A
Domestic Information Standby	97	71	-26.8%	546	449	-17.8%	N/A
<b>Total Selected Non Criminal Code</b>	<b>1759</b>	<b>1600</b>	<b>-9.0%</b>	<b>11039</b>	<b>10386</b>	<b>-5.9%</b>	<b>N/A</b>
<b>Statutes (Federal/Provincial/Municipal)</b>	<b>42</b>	<b>65</b>	<b>54.8%</b>	<b>513</b>	<b>498</b>	<b>-2.9%</b>	<b>99.4%</b>

### Number of Drug Offences Year To Date

	2010	2011	2012	2013	2014	Trend
Demand	613	546	572	598	678	
Supply	737	569	489	396	473	
<b>Total</b>	<b>1350</b>	<b>1115</b>	<b>1061</b>	<b>994</b>	<b>1151</b>	
	<b>Drug Type</b>					
Cannabis	750	688	618	611	652	
Cocaine/Crack	510	331	365	291	369	
Heroin	5	14	12	17	28	
All Other Drugs	85	82	66	75	102	
<b>Total</b>	<b>1350</b>	<b>1115</b>	<b>1061</b>	<b>994</b>	<b>1151</b>	



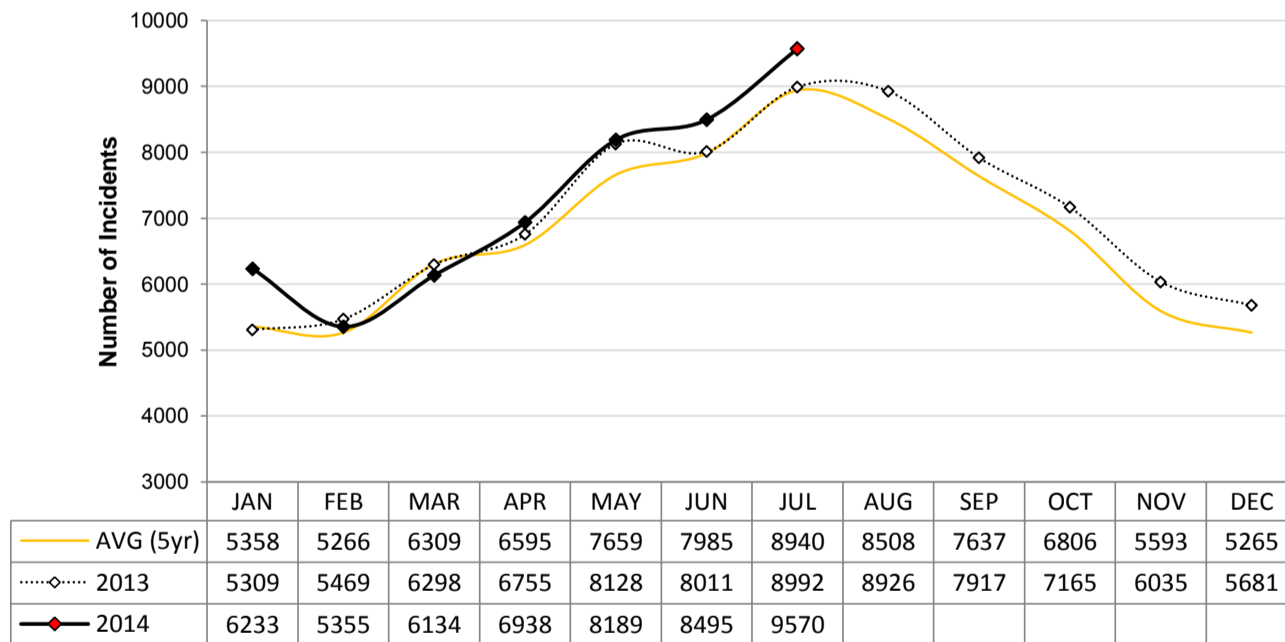
## Calgary Disorder Statistics – CALLS FOR SERVICE

In addition to monitoring crime levels, the Calgary Police Service uses a range of incident types to record levels of "Social & Physical Disorder". The incident types selected for this disorder index are those which can have a negative impact on citizens' quality of life and perception of safety, particularly in public places. These incidents do not tend to be represented well in "traditional" crime statistics which have a propensity to focus more on person and property crime.

### JULY 2014 PUBLIC GENERATED CALLS FOR SERVICE

	Current Month				Year To Date			
	2013	2014	N Change (2013 to 2014)	% Change (2013-2014)	2013	2014	N Change (2013 to 2014)	% Change (2013-2014)
<b>SOCIAL DISORDER</b>								
Disturbance	1076	985	-91	-8.5%	5873	5328	-545	-9.3%
Drugs	267	227	-40	-15.0%	1379	1311	-68	-4.9%
Indecent Act	65	101	36	55.4%	346	394	48	13.9%
Intoxicated Person	737	661	-76	-10.3%	3501	3248	-253	-7.2%
Juvenile Complaint	196	194	-2	-1.0%	980	922	-58	-5.9%
Landlord Tenant	270	280	10	3.7%	1467	1676	209	14.2%
Mental Health Concern	281	310	29	10.3%	1601	1973	372	23.2%
Neighbour Dispute	241	269	28	11.6%	1024	1238	214	20.9%
Noise Complaint	779	768	-11	-1.4%	3612	3375	-237	-6.6%
Party Complaint	302	338	36	11.9%	1211	1110	-101	-8.3%
Possible Gunshots	129	118	-11	-8.5%	450	377	-73	-16.2%
Prostitution	33	25	-8	-24.2%	211	169	-42	-19.9%
Prowler	52	78	26	50.0%	286	358	72	25.2%
Speeder	78	102	24	30.8%	428	406	-22	-5.1%
Suspicious Auto	725	984	259	35.7%	4804	5111	307	6.4%
Suspicious Person	1631	1946	315	19.3%	8619	9359	740	8.6%
Threats	243	263	20	8.2%	1722	1618	-104	-6.0%
Unwanted Guest	1072	1071	-1	-0.1%	6688	8072	1384	20.7%
<b>TOTAL SOCIAL DISORDER</b>	<b>8177</b>	<b>8720</b>	<b>543</b>	<b>6.6%</b>	<b>44202</b>	<b>46045</b>	<b>1843</b>	<b>4.2%</b>
<b>PHYSICAL DISORDER</b>								
Abandoned Auto	30	22	-8	-26.7%	187	204	17	9.1%
Fire	178	190	12	6.7%	1206	1138	-68	-5.6%
Property Damage*	607	638	31	5.1%	3367	3527	160	4.8%
<b>TOTAL PHYSICAL DISORDER</b>	<b>815</b>	<b>850</b>	<b>35</b>	<b>4.3%</b>	<b>4760</b>	<b>4869</b>	<b>109</b>	<b>2.3%</b>
<b>TOTAL DISORDER</b>	<b>8992</b>	<b>9570</b>	<b>578</b>	<b>6.4%</b>	<b>48962</b>	<b>50914</b>	<b>1952</b>	<b>4.0%</b>

**Public Generated Disorder Calls for Service  
YTD Jan 01 to July 31 2014**



**\*Data Notes:**

- 1) Dispatched, Advised, Call Back and Web Calls are included.
- 2) 246 calls in current month were reported at district front counters (walkins) and are excluded from this dataset.
- 3) Current Month: In addition to the 9,570 public generated calls, officers proactively generated 2,398 calls (these are not included in this report).
- 4) \*The majority of Property Damage calls result in criminal code reports which are counted under Other Property Crimes in this report.

# Calgary Traffic Collisions – CUMULATIVE NUMBERS

JULY 2014

	Current Month # of Collisions			Year To Date # of Collisions			Year To Date Rate per 100,000 population		
	2012	2013	2014	2012	2013	2014	2012	2013	2014
Fatal Collisions	5	4	2	21	21	15	1.9	1.8	1.3
Injury Collisions	234	219	252	1486	1469	1601	132.7	127.0	134.0
Property Damage Collisions	2849	2778	2856	22137	21280	24386	1976.1	1839.7	2040.3
e-Collision Reports*	48	26	188	184	209	502	16.4	18.1	42.0
<b>Total Collisions</b>	<b>3136</b>	<b>3027</b>	<b>3298</b>	<b>23828</b>	<b>22979</b>	<b>26504</b>	<b>2127.1</b>	<b>1986.6</b>	<b>2217.5</b>
<i>Parking Lot Collisions</i>	693	669	679	5070	4815	4939	452.6	416.3	413.2
<b>Total Reportable Collisions</b>	<b>2443</b>	<b>2358</b>	<b>2619</b>	<b>18758</b>	<b>18164</b>	<b>21565</b>	<b>1674.5</b>	<b>1570.3</b>	<b>1804.3</b>

Source: Cumulative data; PIMS (August 2014)

NOTE: Total Reportable Collisions exclude collisions along private roadways or public parking lots.

The number of reported traffic collisions may continue to increase over time. Due to data collection and reporting methods, totals for the current month may not be comparable to previous years.

\* e-Collision reporting is a data system which became operational in July 2009. At the time this report was published it was not possible to separate all collisions based on level of severity or to determine whether they occurred in a parking lot. Therefore, as e-Collision reports are completed and entered into the CPS records management system, it is determined whether or not they are reportable, and they are removed from the e-Collision count total and reclassified based on level of severity.

## Top Collision Locations and Primary Cause of Events

Number of Collisions	Location	Primary Cause of Event	Primary Direction of Travel
22	Deerfoot Trail NE & 16 Avenue NE	Rear End	E
18	Deerfoot Trail SE & Glenmore Trail SE	Rear End/Sideswipe	S
18	Deerfoot Trail NE & Memorial Drive NE	Rear End	E
13	Deerfoot Trail NE & 32 Avenue NE	Struck Object/Rear End	S
11	Anderson Road SE & Deerfoot Trail SE	Struck Object	S
11	Edmonton Trail NE & 16 Avenue NE	Rear End	W
10	Crowchild Trail NW & 24 Avenue NW	Rear End	N
10	Deerfoot Trail SE & Southland Drive SE	Struck Object/Rear End	S
10	Glenmore Trail SW & 14 Street SW	Rear End	E/W

Source: Static data; PIMS (September 2014)

When interpreting these data, it is imperative to consider that these figures represent only the number of collisions and they do not account for associated traffic volumes, weather conditions, collision types, driver experience, or any other variables which may or may not be significant factors. The locations denoted might be associated with intersections, on/off ramps, or mid-block locations, which are in close proximity but not necessarily at the exact specified locations. Collisions occurring on private property, such as shopping mall parking lots have been excluded from the data in order to strictly assess intersection related collisions.

NOTE: This table excludes reports made through the e-Collision reporting system.



# Calgary Crime Statistics - CUMULATIVE NUMBERS

JULY 2014

PERSON CRIMES	Current Month			Year To Date			Accumulated To Date		
	Number Of Offences			Number Of Offences			Percentage Cleared		
	2012	2013	2014	2012	2013	2014	2012	2013	2014
<b>Homicide</b>									
1st Degree .....	1	0	1	4	5	11	50.0%	80.0%	63.6%
2nd Degree .....	0	3	2	2	11	10	100.0%	90.9%	80.0%
Manslaughter .....	0	0	1	0	0	1	-	-	100.0%
Infanticide .....	0	0	0	0	0	0	-	-	-
<b>TOTAL</b>	<b>1</b>	<b>3</b>	<b>4</b>	<b>6</b>	<b>16</b>	<b>22</b>	<b>66.7%</b>	<b>87.5%</b>	<b>72.7%</b>
<b>Other Offences Causing Death</b>									
Criminal Negligence .....	0	0	0	0	0	0	-	-	-
Other Offences Causing Death .....	0	0	0	0	0	0	-	-	-
<b>TOTAL</b>	<b>0</b>	<b>0</b>	<b>0</b>	<b>0</b>	<b>0</b>	<b>0</b>	<b>-</b>	<b>-</b>	<b>-</b>
<b>Attempted Homicide</b>									
Attempted Murder .....	3	1	0	8	5	3	25.0%	80.0%	33.3%
Conspiracy To Commit .....	0	0	0	0	4	0	-	100.0%	-
<b>TOTAL</b>	<b>3</b>	<b>1</b>	<b>0</b>	<b>8</b>	<b>9</b>	<b>3</b>	<b>25.0%</b>	<b>88.9%</b>	<b>33.3%</b>
<b>Sex Offences</b>									
Level 3 Aggravated Sexual Assault .....	0	1	0	0	2	2	-	50.0%	0.0%
Level 2 Weapon/Threat/Bodily Harm .....	0	0	0	1	4	4	0.0%	100.0%	50.0%
Level 1 Sexual Assault .....	71	55	46	361	334	279	29.4%	27.8%	22.2%
Indecent Acts .....	19	10	33	88	84	104	59.1%	48.8%	40.4%
Other .....	16	5	6	79	61	60	59.5%	54.1%	33.3%
<b>TOTAL</b>	<b>106</b>	<b>71</b>	<b>85</b>	<b>529</b>	<b>485</b>	<b>449</b>	<b>38.8%</b>	<b>35.5%</b>	<b>28.1%</b>
<b>Robbery</b>									
Financial .....	1	2	0	18	16	17	83.3%	62.5%	70.6%
Commercial .....	9	3	15	132	85	115	47.7%	38.8%	36.5%
Person .....	48	51	63	371	349	358	29.9%	22.9%	22.3%
Home Invasion .....	0	2	5	22	27	31	27.3%	14.8%	19.4%
Robbery of Firearm .....	0	0	0	0	0	0	-	-	-
<b>TOTAL</b>	<b>58</b>	<b>58</b>	<b>83</b>	<b>543</b>	<b>477</b>	<b>521</b>	<b>35.9%</b>	<b>26.6%</b>	<b>26.9%</b>
<b>Assault</b>									
Level 3 - Aggravated .....	10	6	5	65	77	64	73.8%	75.3%	62.5%
Level 2 - Weapon/Bodily Harm .....	137	140	134	755	825	789	60.8%	61.3%	57.0%
Level 1 - Common Assault .....	406	332	335	2225	2137	2463	69.8%	71.7%	69.1%
Assault Police Officer .....	16	31	18	154	133	95	99.4%	98.5%	100.0%
Discharge Firearm with Intent .....	1	0	0	8	10	9	100.0%	40.0%	0.0%
Other Assaults .....	7	0	4	17	10	12	88.2%	100.0%	83.3%
<b>TOTAL</b>	<b>577</b>	<b>509</b>	<b>496</b>	<b>3224</b>	<b>3192</b>	<b>3432</b>	<b>69.4%</b>	<b>70.2%</b>	<b>66.9%</b>
<b>Miscellaneous Person Crimes</b>									
Kidnapping/Abduction .....	4	1	1	20	18	18	45.0%	38.9%	27.8%
Forcible Confinement .....	8	13	14	70	68	71	78.6%	79.4%	76.1%
Extortion .....	3	3	3	26	17	26	76.9%	64.7%	46.2%
Criminal Harassment .....	25	26	13	182	168	102	65.9%	61.9%	53.9%
Indecent/Harassing Calls .....	5	1	1	17	24	20	41.2%	29.2%	25.0%
<b>TOTAL</b>	<b>45</b>	<b>44</b>	<b>32</b>	<b>315</b>	<b>295</b>	<b>237</b>	<b>67.0%</b>	<b>62.0%</b>	<b>55.3%</b>
<b>TOTAL PERSON CRIMES</b>	<b>790</b>	<b>686</b>	<b>700</b>	<b>4625</b>	<b>4474</b>	<b>4664</b>	<b>61.7%</b>	<b>61.4%</b>	<b>58.1%</b>

# Calgary Crime Statistics - CUMULATIVE NUMBERS

## JULY 2014

PROPERTY CRIMES	Current Month			Year To Date			Accumulated To Date		
	Number Of Offences			Number Of Offences			Percentage Cleared		
	2012	2013	2014	2012	2013	2014	2012	2013	2014
<b>Break and Enter</b>									
Residential .....	245	230	186	1483	1261	1397	18.9%	20.1%	12.0%
Commercial .....	146	145	110	1234	1097	1131	15.2%	15.4%	11.9%
Other B&E .....	70	119	103	469	621	702	11.1%	11.3%	16.1%
Unlawfully in Residence .....	5	3	5	28	20	30	89.3%	85.0%	83.3%
B&E Firearms .....	0	0	0	0	0	1	-	-	0.0%
<b>TOTAL</b>	<b>466</b>	<b>497</b>	<b>404</b>	<b>3214</b>	<b>2999</b>	<b>3261</b>	<b>17.0%</b>	<b>17.0%</b>	<b>13.5%</b>
<b>Theft</b>									
Theft Over .....	24	33	17	156	161	134	21.2%	14.9%	7.5%
Theft Under .....	636	751	695	3689	3928	4024	13.0%	10.1%	9.3%
Possession Stolen Property .....	64	88	72	483	556	541	100.0%	100.0%	100.0%
From Vehicle Over .....	7	12	13	70	60	41	1.4%	3.3%	4.9%
From Vehicle Under .....	887	859	854	4610	4608	4028	4.3%	3.8%	2.9%
Shoplift Over .....	0	0	0	6	5	7	33.3%	20.0%	28.6%
Shoplift Under .....	332	302	298	2312	2012	2308	79.0%	73.8%	73.0%
<b>TOTAL</b>	<b>1950</b>	<b>2045</b>	<b>1949</b>	<b>11326</b>	<b>11330</b>	<b>11083</b>	<b>26.7%</b>	<b>23.3%</b>	<b>24.6%</b>
<b>Vehicle Theft</b>									
Theft Over .....	343	380	384	2121	2434	2216	11.1%	9.0%	9.9%
Theft Under .....	48	79	56	267	357	333	22.1%	19.3%	17.7%
Attempted .....	9	19	18	72	91	76	1.4%	0.0%	2.6%
<b>TOTAL</b>	<b>400</b>	<b>478</b>	<b>458</b>	<b>2460</b>	<b>2882</b>	<b>2625</b>	<b>12.0%</b>	<b>10.0%</b>	<b>10.7%</b>
<b>Fraud Related</b>									
False Pretences .....	3	2	1	25	19	11	40.0%	73.7%	72.7%
Forgery/Uttering .....	21	30	18	174	227	186	74.7%	79.3%	55.9%
Forgery-Credit Card .....	23	21	11	180	133	170	37.8%	33.1%	20.6%
Impersonation .....	35	23	43	196	204	254	64.3%	63.7%	40.9%
Food/Lodging/Transportation .....	12	20	17	128	140	133	60.2%	54.3%	66.2%
Defraud Person (Under/Over) .....	127	128	102	805	938	862	43.2%	40.6%	26.6%
Other Fraud .....	11	6	13	104	59	76	66.3%	64.4%	51.3%
<b>TOTAL</b>	<b>232</b>	<b>230</b>	<b>205</b>	<b>1612</b>	<b>1720</b>	<b>1692</b>	<b>51.4%</b>	<b>50.2%</b>	<b>35.9%</b>
<b>Other Property Crimes</b>									
Mischief Over \$5,000 .....	8	11	6	36	39	55	25.0%	20.5%	16.4%
Mischief Under \$5,000 .....	254	273	259	1812	1696	1536	24.0%	30.9%	25.9%
Other Mischief .....	110	156	88	712	785	617	86.0%	84.7%	80.7%
Vehicle Damage .....	349	361	320	2125	1786	1623	8.4%	8.2%	8.0%
Arson .....	11	16	32	107	100	118	26.2%	21.0%	10.2%
<b>TOTAL</b>	<b>732</b>	<b>817</b>	<b>705</b>	<b>4792</b>	<b>4406</b>	<b>3949</b>	<b>26.3%</b>	<b>31.0%</b>	<b>26.5%</b>
<b>TOTAL PROPERTY CRIMES</b>	<b>3780</b>	<b>4059</b>	<b>3721</b>	<b>23404</b>	<b>23337</b>	<b>22610</b>	<b>25.4%</b>	<b>24.3%</b>	<b>22.6%</b>

# Calgary Crime Statistics - CUMULATIVE NUMBERS

JULY 2014

OTHER CRIMINAL CODE	Current Month Number Of Offences			Year To Date Number Of Offences			Accumulated To Date Percentage Cleared		
	2012	2013	2014	2012	2013	2014	2012	2013	2014
<b>Vice</b>									
Impede/Communicate .....	1	0	1	46	29	48	100.0%	100.0%	100.0%
Live on Avails .....	0	1	0	1	7	1	100.0%	100.0%	100.0%
Bawdy House .....	0	3	0	1	6	3	100.0%	100.0%	100.0%
Procure/Solicit .....	0	5	0	3	19	5	66.7%	89.5%	80.0%
<b>TOTAL</b>	<b>1</b>	<b>9</b>	<b>1</b>	<b>51</b>	<b>61</b>	<b>57</b>	<b>98.0%</b>	<b>96.7%</b>	<b>98.2%</b>
<b>Gaming</b>									
Gaming House .....	0	0	0	0	1	0	-	100.0%	-
Betting .....	0	0	0	0	0	0	-	-	-
Lotteries/Games .....	0	0	0	0	0	0	-	-	-
Other .....	0	0	0	1	0	1	100.0%	-	100.0%
<b>TOTAL</b>	<b>0</b>	<b>0</b>	<b>0</b>	<b>1</b>	<b>1</b>	<b>1</b>	<b>100.0%</b>	<b>100.0%</b>	<b>100.0%</b>
<b>Weapon Related</b>									
Prohibited .....	19	8	12	107	85	93	100.0%	100.0%	100.0%
Restricted .....	17	21	15	123	122	133	100.0%	100.0%	100.0%
Explosives .....	0	0	0	1	1	0	100.0%	100.0%	-
Possess Prohibited .....	0	0	0	0	0	0	-	-	-
Use Firearm in Offence .....	0	0	0	0	4	1	-	100.0%	100.0%
FAC Related .....	4	5	2	32	46	51	100.0%	100.0%	100.0%
Other .....	49	52	36	345	344	227	98.3%	98.3%	98.7%
<b>TOTAL</b>	<b>89</b>	<b>86</b>	<b>65</b>	<b>608</b>	<b>602</b>	<b>505</b>	<b>99.0%</b>	<b>99.0%</b>	<b>99.4%</b>
<b>Miscellaneous</b>									
Counterfeiting .....	30	5	34	114	97	139	3.5%	3.1%	2.9%
Obstruct Peace Officer .....	51	48	46	363	324	307	98.9%	98.5%	99.3%
Bail Violation/Fail to attend .....	286	271	326	1875	1792	2056	100.0%	99.9%	100.0%
Fail to comply with Probation .....	53	48	61	379	384	335	100.0%	100.0%	100.0%
Escape Custody/UAL .....	16	13	12	129	114	84	99.2%	100.0%	98.8%
Attempt to commit/accessory .....	4	1	0	30	14	13	90.0%	100.0%	92.3%
Miscellaneous .....	137	121	126	907	913	928	73.2%	74.3%	70.4%
<b>TOTAL</b>	<b>577</b>	<b>507</b>	<b>605</b>	<b>3797</b>	<b>3638</b>	<b>3862</b>	<b>90.5%</b>	<b>90.8%</b>	<b>89.3%</b>
<b>TOTAL OTHER CRIMINAL CODE</b>	<b>667</b>	<b>602</b>	<b>671</b>	<b>4457</b>	<b>4302</b>	<b>4425</b>	<b>91.7%</b>	<b>92.0%</b>	<b>90.6%</b>
<b>TOTAL CRIMINAL CODE (EXCL. TRAFFIC)</b>	<b>5237</b>	<b>5335</b>	<b>5092</b>	<b>32468</b>	<b>32113</b>	<b>31699</b>	<b>39.7%</b>	<b>38.6%</b>	<b>37.3%</b>

# Calgary Crime Statistics - CUMULATIVE NUMBERS

JULY 2014

SELECTED OTHER	Current Month			Year To Date			Accumulated To Date		
	Number Of Offences			Number Of Offences			Percentage Cleared		
	2012	2013	2014	2012	2013	2014	2012	2013	2014
<b>Criminal Code Traffic</b>									
Impaired Causing Death .....	1	0	0	3	0	0	100.0%	-	-
Impaired Causing Bodily Harm .....	0	0	0	8	3	2	100.0%	100.0%	50.0%
Impaired > .08 .....	121	89	70	774	640	557	100.0%	100.0%	100.0%
Impaired Driving .....	144	108	103	990	818	725	100.0%	99.9%	100.0%
Fail/Refuse .....	37	25	34	251	209	217	100.0%	100.0%	100.0%
Dangerous Causing Death .....	2	0	0	6	1	0	100.0%	100.0%	-
Dangerous Operation Causing Harm .....	0	1	0	5	6	1	100.0%	100.0%	100.0%
Dangerous Operation of Motor Vehicle .....	12	13	15	75	83	92	98.7%	98.8%	100.0%
Impaired Driving (Drugs) .....	0	0	0	0	1	0	-	100.0%	-
<b>TOTAL</b>	<b>317</b>	<b>236</b>	<b>222</b>	<b>2112</b>	<b>1761</b>	<b>1594</b>	<b>100.0%</b>	<b>99.9%</b>	<b>99.9%</b>
<b>Drugs</b>									
CDSA/NCA/FDA Possession .....	77	95	85	581	610	678	100.0%	100.0%	100.0%
CDSA/NCA/FDA Trafficking .....	13	41	16	217	128	198	100.0%	100.0%	100.0%
CDSA/NCA/FDA Possession for Purpose .....	36	62	33	257	287	259	100.0%	100.0%	100.0%
CDSA/NCA Importation/Export .....	1	0	0	1	1	0	100.0%	100.0%	-
CDSA/NCA Cultivation/Production .....	6	3	4	42	24	16	100.0%	100.0%	100.0%
CDSA/NCA/FDA Prop./Proc. from Trafficking	0	0	0	0	0	0	-	-	-
<b>TOTAL</b>	<b>133</b>	<b>201</b>	<b>138</b>	<b>1098</b>	<b>1050</b>	<b>1151</b>	<b>100.0%</b>	<b>100.0%</b>	<b>100.0%</b>
<b>Selected Non Criminal Code Incidents</b>									
Accidental/Sudden Death .....	68	62	60	421	423	407	N/A	N/A	N/A
Missing Persons .....	262	259	236	1883	1796	1578	N/A	N/A	N/A
Court Order .....	97	152	104	616	773	674	N/A	N/A	N/A
Domestic Information .....	1194	1228	1129	7323	7626	7278	N/A	N/A	N/A
Domestic Information Standby .....	83	100	71	495	551	449	N/A	N/A	N/A
<b>TOTAL</b>	<b>1704</b>	<b>1801</b>	<b>1600</b>	<b>10738</b>	<b>11169</b>	<b>10386</b>	<b>N/A</b>	<b>N/A</b>	<b>N/A</b>
<b>Statutes</b>									
Federal .....	32	17	25	244	184	210	100.0%	100.0%	100.0%
Provincial .....	35	29	37	252	286	243	98.8%	99.3%	98.8%
Municipal .....	9	2	3	73	56	45	100.0%	100.0%	100.0%
<b>TOTAL</b>	<b>76</b>	<b>48</b>	<b>65</b>	<b>569</b>	<b>526</b>	<b>498</b>	<b>99.5%</b>	<b>99.6%</b>	<b>99.4%</b>