

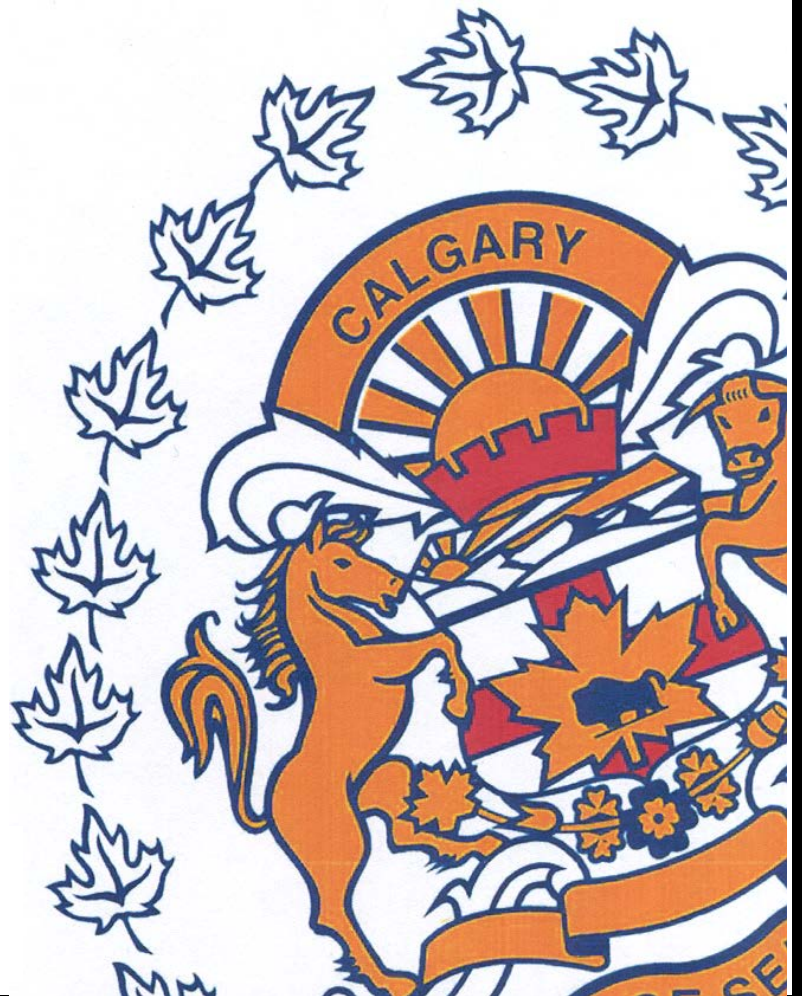
March

Monthly Statistical

REPORT

2014

Compiled by: Centralized Analysis Unit
Crime and Intelligence Analytical Section
Strategic Services Division
© Calgary Police Service 2014



The Calgary Police Service provides this information in good faith but it provides no warranty, nor accepts any liability arising from any incorrect, incomplete or misleading information.

TABLE OF CONTENTS

	<i>Page</i>
Monthly Highlights - STATIC NUMBER COMPARISON	1
Calgary Crime Statistics – STATIC NUMBERS	
Person Crimes	2
Property Crimes	3
Other Criminal Code/Selected Other/Drug Offences	4
Calgary Disorder Statistics – CALLS FOR SERVICE	5
Calgary Crime Statistics - CUMULATIVE NUMBERS	6

REPORT NOTES

Most of the statistical data in this report are derived from the Police Information Management System (PIMS) and compiled by the Centralized Analysis Unit. The numbers reported may change on a daily basis due to the dynamic nature of offences being reported and cleared. Disorder data is derived from the CAD system and is static.

To a large extent, the data in this report are based on accumulated to date information. ***(Except for the Monthly Highlights which are based on static information (i.e.: a snap-shot in time).***

- For offences based on accumulated to date information, the number of offences recorded may be higher than previously reported (i.e. in previous statistical reports) due to late reporting. Although this does not greatly affect the number of occurrences for all offences, for some categories it may be as high as a 30-40% increase. The published data for the current period can therefore be expected to increase as time passes. As a result, readers should exercise caution when making comparisons between historical data and current data (i.e. previous year to this year) as data for the historic period will now include late reported offences, but data for the current period will not at this time. To achieve an effective comparison, current data should be evaluated against the originally published data for the historic period.
- Likewise, late reporting affects the number and percentage of offences cleared. Cases are often cleared months and sometimes years later. Consequently, clearances for previous years may appear to be much higher than those of the present year. Cases “cleared by charge” and those “cleared otherwise” are included in these totals.
- For offences based on “static” or “snap-shot” information, data totals will only reflect the number of offences reported in the original publication. They are not updated. Although late reporting may occur, and offences may continue to be cleared as time passes, these new events are not taken into account when preparing this statistical report.

A single incident may result in multiple offences, with each unique *Criminal Code* violation within the incident being counted as an offence. Furthermore, person crime offences are typically counted by the number of victims. Please note that offences are assigned to the month in which the offence "started", not the month they were reported or cleared. Also note that “attempted” incidents are included in these totals. For a more detailed explanation of the Offence counting procedure, please contact the Centralized Analysis Unit.

Monthly Highlights – STATIC NUMBER COMPARISON

To reduce the impact of late reporting, comments on this page are a comparison between the CPS March 2014 Statistical Report and the CPS March 2013 Statistical Report. To achieve an effective comparison, current data should be evaluated against the originally published data for the historic period.

MARCH 2014

PERSON CRIME

- ◆ Reported **person crimes** for the month of March 2014 decreased 7.1% when compared to March 2013 (574 offences in March 2014 vs. 618 in March 2013).
- ◆ Total **robbery** offences for the month of March 2014 decreased 38.7% when compared to March 2013 (57 offences in March 2014 vs. 93 in March 2013); During March 2014 there were:
 - 0 **financial robberies** (compared to 3 in March 2013);
 - 13 **commercial robberies** (compared to 20 in March 2013);
 - 41 **person robberies** (compared to 62 in March 2013); and
 - 3 **home invasions** (compared to 8 in March 2013).
- ◆ **Assaults** decreased 1.1% this month (448 offences in March 2014 vs. 453 in March 2013).
- ◆ **Sex offences** decreased 13.6% this month (38 **sex offences** in March 2014 compared to 44 in March 2013).

PROPERTY CRIME

- ◆ Reported **property crimes** this month decreased 5.9% when compared to March 2013 (2636 offences in March 2014 compared to 2801 in March 2013).
- ◆ **Vehicle theft** (including attempts) decreased 32.0% this month when compared to March 2013 (293 offences in March 2014 vs. 431 in March 2013).
- ◆ **Theft** offences decreased 8.0% this month when compared to March 2013 (1239 offences in March 2014 vs. 1347 in March 2013).
- ◆ **Break and enter** offences this month increased 16.6% when compared to March 2013 (457 offences this month compared to 392 in March 2013).
 - **Residential break and enter** offences this month increased 1.3% when compared to March 2013 (161 offences in March 2014 vs. 159 in March 2013); and
 - **Commercial break and enter** offences increased 27.5% this month when compared to March 2013 (218 offences in March 2014 vs. 171 in March 2013).
- ◆ **Fraud related** offences increased 6.1% this month (175 offences in March 2014 vs. 165 in March 2013).

DISORDER

- ◆ March 2014 saw a 2.6% decline from disorder volume recorded last March (164 fewer incidents); a similar reduction from average was also noted (-2.8%, 175 fewer incidents).
- ◆ Physical disorder incidents (abandoned auto, fire and property damage) noted a 12.7% increase from March 2013 (69 additional incidents) but a 16.1% decrease from average (118 fewer incidents). All event types registered an increase against March 2013; however, all event types noted declined against average with the exception of **abandoned autos** (only a slight increase was noted).
- ◆ Reported social disorder incidents decreased 4.1% from March 2013 (233 fewer incidents) and saw a slight reduction from average (-1.0%, 56 fewer incidents). **Disturbances, noise complaints and suspicious persons** all registered substantial declines against last March and their respective averages. **Unwanted guests** and **mental health concerns** were the only noteworthy event type increases against March 2013; both event types also noted an increase against their respective averages.

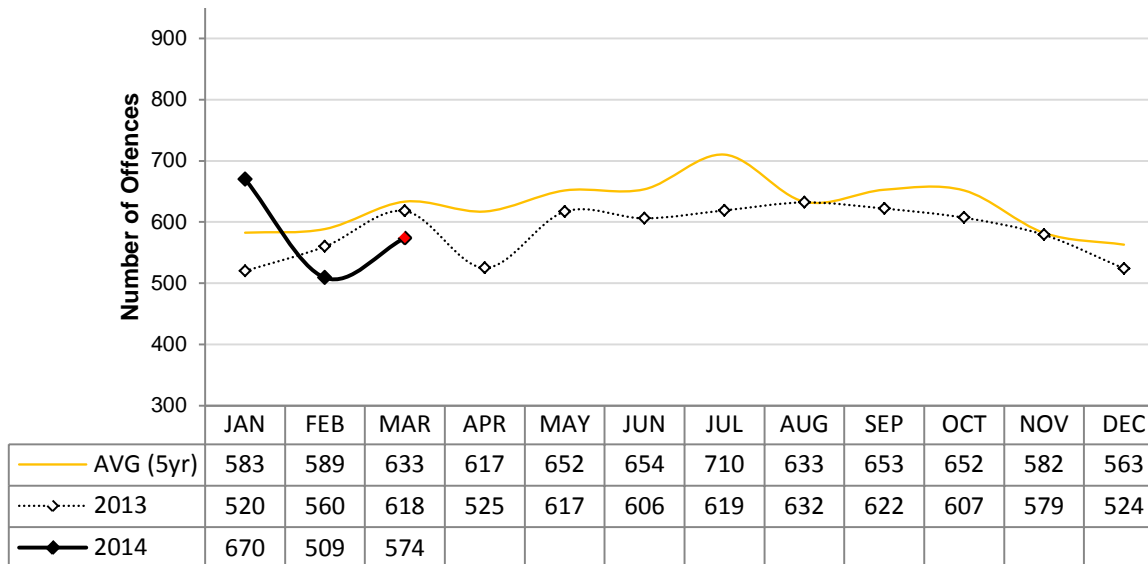
Calgary Person Crime Statistics – STATIC NUMBERS

The static crime numbers on this page are derived from historical Calgary Police Service Monthly Statistical Reports. These statistics are used when writing the Monthly Highlights page in order to make a fair comparison using data which has not been allowed to increase due to late reporting of crime. Using static numbers allows us to compare crime levels at a specific point in time and make an accurate determination of increases or decreases. The cumulative crime numbers (pages 8 – 11) are statistics derived from the CPS Police Information Management System. P.I.M.S. cannot produce static numbers and therefore the cumulative numbers reflect any late reporting of crime. To achieve an effective comparison, current data should be evaluated against the originally published data for the historic period. *Due to the dynamic nature of ongoing homicide investigations these numbers may have been manually updated to reflect the current homicide count. Due to manually updating, it's possible 1 or more homicides may be reflected within the assault category. The homicide counts are provided by the homicide unit.

MARCH 2014

	Current Month Number Of Offences			Year To Date Number Of Offences			% Cleared 2014
	2013	2014	% Change (2013-2014)	2013	2014	% Change (2013-2014)	
PERSON CRIMES							
Homicide*	2	1	-50.0%	6	6	0.0%	16.7%
Other Offences Causing Death	0	0	N/A	0	0	N/A	N/A
Attempted Homicide	0	1	N/A	0	1	N/A	100.0%
Sex Offences	44	38	-13.6%	148	136	-8.1%	21.3%
Robbery:							
<i>Financial</i>	3	0	-100.0%	4	8	100.0%	87.5%
<i>Commercial</i>	20	13	-35.0%	54	46	-14.8%	32.6%
<i>Person</i>	62	41	-33.9%	163	127	-22.1%	22.0%
<i>Home Invasion</i>	8	3	-62.5%	15	14	-6.7%	21.4%
Total Robbery	93	57	-38.7%	236	195	-17.4%	27.2%
Assault:							
<i>Level 3 - Aggravated</i>	15	10	-33.3%	36	32	-11.1%	53.1%
<i>Level 2 - Weapon/Bodily Harm</i>	107	88	-17.8%	307	293	-4.6%	57.7%
<i>Level 1 - Common Assault</i>	302	329	8.9%	849	1005	18.4%	68.2%
<i>Assault Police Officer</i>	19	20	5.3%	55	44	-20.0%	100.0%
<i>Discharge Firearm with Intent</i>	5	0	-100.0%	6	7	16.7%	0.0%
<i>Other Assaults</i>	5	1	-80.0%	7	3	-57.1%	100.0%
Total Assault	453	448	-1.1%	1260	1384	9.8%	66.3%
Misc Person Crimes	26	29	11.5%	89	92	3.4%	56.5%
TOTAL PERSON CRIMES	618	574	-7.1%	1739	1814	4.3%	58.1%

**Person Crime-Static Numbers
YTD Jan 01 to Mar 31 2014**



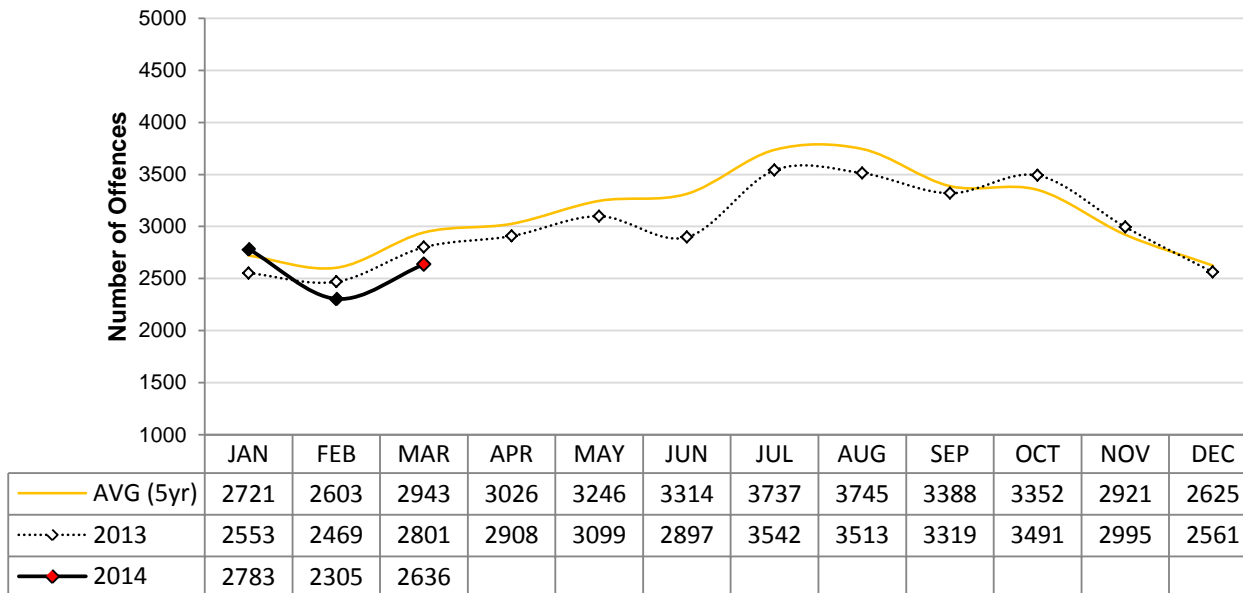
Calgary Property Crime Statistics – STATIC NUMBERS

The static crime numbers on this page are derived from historical Calgary Police Service Monthly Statistical Reports. These statistics are used when writing the Monthly Highlights page in order to make a fair comparison using data which has not been allowed to increase due to late reporting of crime. Using static numbers allows us to compare crime levels at a specific point in time and make an accurate determination of increases or decreases. The cumulative crime numbers (pages 8 – 11) are statistics derived from the CPS Police Information Management System. P.I.M.S. cannot produce static numbers and therefore the cumulative numbers reflect any late reporting of crime. To achieve an effective comparison, current data should be evaluated against the originally published data for the historic period.

MARCH 2014

	Current Month Number Of Offences			Year To Date Number Of Offences			% Cleared 2014
	2013	2014	% Change (2013-2014)	2013	2014	% Change (2013-2014)	
PROPERTY CRIMES							
Break and Enter:							
<i>Residential B&E</i>	159	161	1.3%	455	516	13.4%	7.6%
<i>Commercial B&E</i>	171	218	27.5%	475	517	8.8%	7.4%
<i>Other B&E</i>	55	74	34.5%	191	210	9.9%	14.3%
<i>Unlawfully in Residence</i>	7	4	-42.9%	8	10	25.0%	80.0%
Total Break and Enter	392	457	16.6%	1129	1253	11.0%	9.2%
Theft	1347	1239	-8.0%	4043	3851	-4.7%	26.6%
Vehicle Theft (including attempts)	431	293	-32.0%	1094	987	-9.8%	10.5%
Fraud Related	165	175	6.1%	565	623	10.3%	34.2%
Other Property Crimes	466	472	1.3%	1404	1432	2.0%	28.3%
TOTAL PROPERTY CRIMES	2801	2636	-5.9%	8235	8146	-1.1%	22.8%

**Property Crime-Static Numbers
YTD Jan 01 to Mar 31 2014**



Calgary Other Crime Statistics – STATIC NUMBERS

The static crime numbers on this page are derived from historical Calgary Police Service Monthly Statistical Reports. These statistics are used when writing the Monthly Highlights page in order to make a fair comparison using data which has not been allowed to increase due to late reporting of crime. Using static numbers allows us to compare crime levels at a specific point in time and make an accurate determination of increases or decreases. The cumulative crime numbers (pages 8 – 11) are statistics derived from the CPS Police Information Management System. P.I.M.S. cannot produce static numbers and therefore the cumulative numbers reflect any late reporting of crime. To achieve an effective comparison, current data should be evaluated against the originally published data for the historic period.

MARCH 2014

	Current Month Number Of Offences			Year To Date Number Of Offences			% Cleared 2014
	2013	2014	% Change (2013-2014)	2014	2013	% Change (2013-2014)	
OTHER CRIMINAL CODE							
Vice	18	1	-94.4%	31	5	-83.9%	80.0%
Gaming	0	0	N/A	0	1	N/A	100.0%
Weapon Related	104	61	-41.3%	250	195	-22.0%	99.5%
Misc	482	537	11.4%	1455	1509	3.7%	90.9%
TOTAL OTHER CRIMINAL CODE	604	599	-0.8%	1736	1710	-1.5%	91.9%
TOTAL OVERALL CRIMINAL CODE (excluding traffic)	4023	3809	-5.3%	11710	11670	-0.3%	38.5%
SELECTED OTHER							
Criminal Code Traffic	285	223	-21.8%	793	666	-16.0%	100.0%
Drugs	137	130	-5.1%	374	418	11.8%	100.0%
Selected Non Criminal Code:							
<i>Accidental/Sudden Death</i>	77	73	-5.2%	205	179	-12.7%	N/A
<i>Missing Persons</i>	263	180	-31.6%	652	557	-14.6%	N/A
<i>Court Order</i>	117	96	-17.9%	306	290	-5.2%	N/A
<i>Domestic Information</i>	1067	1013	-5.1%	3023	2999	-0.8%	N/A
<i>Domestic Information Standby</i>	76	60	-21.1%	248	178	-28.2%	N/A
Total Selected Non Criminal Code	1600	1422	-11.1%	4434	4203	-5.2%	N/A
Statutes (Federal/Provincial/Municipal)	89	65	-27.0%	245	208	-15.1%	99.0%
TOTAL SELECTED OTHER	2111	1840	-12.8%	5846	5495	-6.0%	99.8%

Number of Drug Offences Year To Date

	2010	2011	2012	2013	2014	Trend
Demand	245	196	235	226	274	
Supply	271	225	192	148	144	
Total	516	421	427	374	418	
	Drug Type					
Cannabis	290	282	268	220	257	
Cocaine/Crack	191	111	120	121	112	
Heroin	2	1	6	6	10	
All Other Drugs	33	27	33	27	39	
Total	516	421	427	374	418	

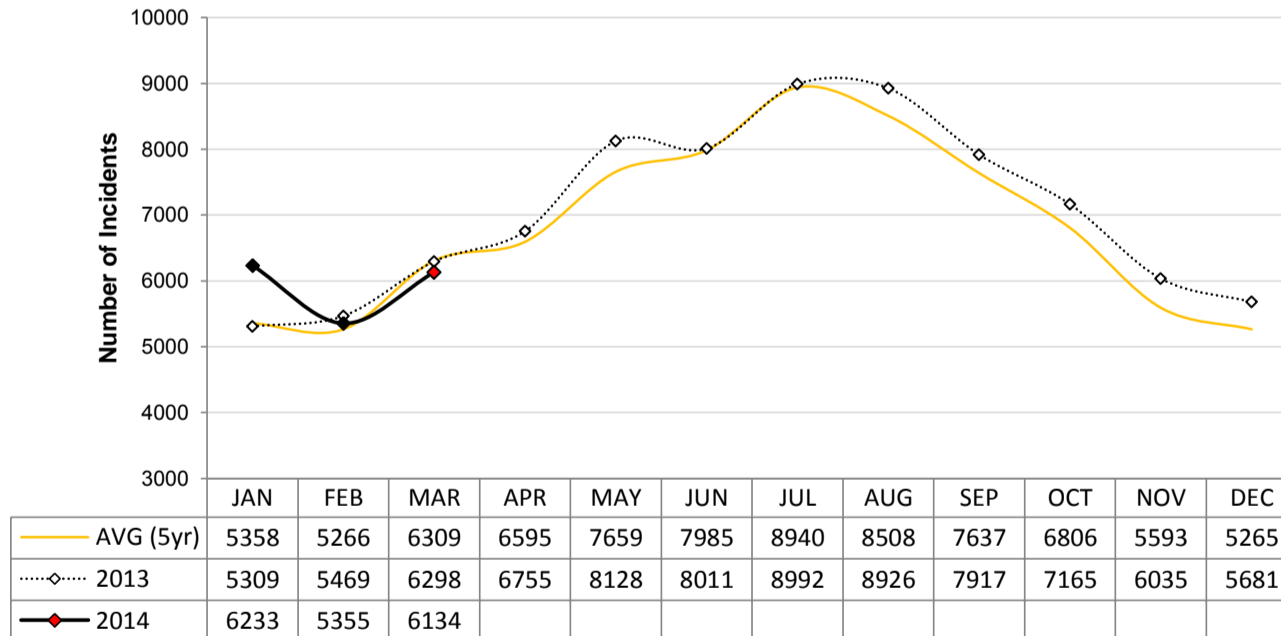
Calgary Disorder Statistics – CALLS FOR SERVICE

In addition to monitoring crime levels, the Calgary Police Service uses a range of incident types to record levels of "Social & Physical Disorder". The incident types selected for this disorder index are those which can have a negative impact on citizens' quality of life and perception of safety, particularly in public places. These incidents do not tend to be represented well in "traditional" crime statistics which have a propensity to focus more on person and property crime.

MARCH 2014 PUBLIC GENERATED CALLS FOR SERVICE

	Current Month				Year To Date			
	2013	2014	N Change (2013 to 2014)	% Change (2013-2014)	2013	2014	N Change (2013 to 2014)	% Change (2013-2014)
SOCIAL DISORDER								
Disturbance	844	656	-188	-22.3%	2161	1876	-285	-13.2%
Drugs	185	160	-25	-13.5%	449	453	4	0.9%
Indecent Act	36	41	5	13.9%	92	95	3	3.3%
Intoxicated Person	415	394	-21	-5.1%	1102	1157	55	5.0%
Juvenile Complaint	116	68	-48	-41.4%	254	195	-59	-23.2%
Landlord Tenant	185	201	16	8.6%	548	628	80	14.6%
Mental Health Concern	226	276	50	22.1%	637	794	157	24.6%
Neighbour Dispute	99	121	22	22.2%	278	379	101	36.3%
Noise Complaint	432	373	-59	-13.7%	1143	1015	-128	-11.2%
Party Complaint	97	86	-11	-11.3%	255	211	-44	-17.3%
Possible Gunshots	43	33	-10	-23.3%	112	96	-16	-14.3%
Prostitution	43	12	-31	-72.1%	84	37	-47	-56.0%
Prowler	27	28	1	3.7%	72	102	30	41.7%
Speeder	52	32	-20	-38.5%	124	89	-35	-28.2%
Suspicious Auto	626	667	41	6.5%	1775	1880	105	5.9%
Suspicious Person	1069	1000	-69	-6.5%	2904	2860	-44	-1.5%
Threats	224	231	7	3.1%	723	627	-96	-13.3%
Unwanted Guest	1034	1141	107	10.3%	2644	3441	797	30.1%
TOTAL SOCIAL DISORDER	5753	5520	-233	-4.1%	15357	15935	578	3.8%
PHYSICAL DISORDER								
Abandoned Auto	28	48	20	71.4%	72	131	59	81.9%
Fire	139	152	13	9.4%	417	406	-11	-2.6%
Property Damage*	378	414	36	9.5%	1230	1250	20	1.6%
TOTAL PHYSICAL DISORDER	545	614	69	12.7%	1719	1787	68	4.0%
TOTAL DISORDER	6298	6134	-164	-2.6%	17076	17722	646	3.8%

**Public Generated Disorder Calls for Service
YTD Jan 01 to March 31 2014**



***Data Notes:**

- 1) Dispatched, Advised, Call Back and Web Calls are included.
- 2) 137 calls in current month were reported at district front counters (walkins) and are excluded from this dataset.
- 3) Current Month: In addition to the 6,134 public generated calls, officers proactively generated 1,390 calls (these are not included in this report).
- 4) *The majority of Property Damage calls result in criminal code reports which are counted under Other Property Crimes in this report.

Calgary Traffic Collisions – CUMULATIVE NUMBERS

MARCH 2014

	Current Month # of Collisions			Year To Date # of Collisions			Year To Date Rate per 100,000 population		
	2012	2013	2014	2012	2013	2014	2012	2013	2014
Fatal Collisions	5	1	3	8	6	9	0.7	0.5	0.8
Injury Collisions	191	217	201	617	627	652	55.1	54.5	56.7
Property Damage Collisions	2917	2615	3599	9944	9974	11579	887.7	867.6	1007.
e-Collision Reports*	16	34	233	48	98	457	4.3	8.5	39.8
Total Collisions	3129	3867	4036	10617	10705	12697	947.8	931.2	1104.5
<i>Parking Lot Collisions</i>	670	737	649	1982	2111	2035	176.9	183.6	177.0
Total Reportable Collisions	2459	3130	3387	8635	8594	10662	770.8	747.6	927.5

Source: Cumulative data; PIMS (April 2014)

NOTE: Total Reportable Collisions exclude collisions along private roadways or public parking lots.

The number of reported traffic collisions may continue to increase over time. Due to data collection and reporting methods, totals for the current month may not be comparable to previous years.

* e-Collision reporting is a data system which became operational in July 2009. At the time this report was published it was not possible to separate all collisions based on level of severity or to determine whether they occurred in a parking lot. Therefore, as e-Collision reports are completed and entered into the CPS records management system, it is determined whether or not they are reportable, and they are removed from the e-Collision count total and reclassified based on level of severity.

Top Collision Locations and Primary Cause of Events

Number of Collisions	Location	Primary Cause of Event	Primary Direction of Travel
14	Deerfoot Trail NE & Memorial Drive NE	Rear End	E
14	Deerfoot Trail NE & 16 Avenue NE	Rear End	W
12	Glenmore Trail SE & 18 Street SE	Rear End	N
11	Crowchild Trail SW & Glenmore Trail SW	Rear End	W
11	32 Avenue NE & 36 Street NE	Rear End	E
10	Bow Trail SW & Sarcee Trail SW	Rear End	E
10	Crowchild Trail NW & 16 Avenue NW	Rear End	W
10	Deerfoot Trail SE & Glenmore Trail SE	Rear End	E
10	16 Avenue NE & 36 Street NE	Rear End	S
9	Deerfoot Trail NE & 32 Avenue NE	Rear End	N

Source: Static data; PIMS (April 2014)

When interpreting these data, it is imperative to consider that these figures represent only the number of collisions and they do not account for associated traffic volumes, weather conditions, collision types, driver experience, or any other variables which may or may not be significant factors. The locations denoted might be associated with intersections, on/off ramps, or mid-block locations, which are in close proximity but not necessarily at the exact specified locations. Collisions occurring on private property, such as shopping mall parking lots have been excluded from the data in order to strictly assess intersection related collisions.

NOTE: This table excludes reports made through the e-Collision reporting system.

Calgary Crime Statistics - CUMULATIVE NUMBERS

MARCH 2014

PERSON CRIMES	Current Month			Year To Date			Accumulated To Date		
	Number Of Offences			Number Of Offences			Percentage Cleared		
	2012	2013	2014	2012	2013	2014	2012	2013	2014
Homicide									
1st Degree	0	1	0	1	1	3	100.0%	100.0%	0.0%
2nd Degree	0	1	1	1	5	3	100.0%	100.0%	33.3%
Manslaughter	0	0	0	0	0	0	-	-	-
Infanticide	0	0	0	0	0	0	-	-	-
TOTAL	0	2	1	2	6	6	100.0%	100.0%	16.7%
Other Offences Causing Death									
Criminal Negligence	0	0	0	0	0	0	-	-	-
Other Offences Causing Death	0	0	0	0	0	0	-	-	-
TOTAL	0	0	0	0	0	0	-	-	-
Attempted Homicide									
Attempted Murder	1	0	1	2	0	1	50.0%	-	100.0%
Conspiracy To Commit	0	0	0	0	0	0	-	-	-
TOTAL	1	0	1	2	0	1	50.0%	-	100.0%
Sex Offences									
Level 3 Aggravated Sexual Assault	0	0	1	0	0	1	-	-	0.0%
Level 2 Weapon/Threat/Bodily Harm	0	0	1	0	1	3	-	100.0%	33.3%
Level 1 Sexual Assault	32	42	26	150	133	93	28.0%	30.8%	18.3%
Indecent Acts	12	7	5	44	20	17	63.6%	50.0%	41.2%
Other	12	16	5	38	30	22	52.6%	53.3%	18.2%
TOTAL	56	65	38	232	184	136	38.8%	37.0%	21.3%
Robbery									
Financial	2	3	0	8	4	8	75.0%	25.0%	87.5%
Commercial	13	20	13	79	55	46	51.9%	49.1%	32.6%
Person	67	63	41	176	166	127	33.0%	23.5%	22.0%
Home Invasion	3	8	3	14	16	14	28.6%	12.5%	21.4%
Robbery of Firearm	0	0	0	0	0	0	-	-	-
TOTAL	85	94	57	277	241	195	39.4%	28.6%	27.2%
Assault									
Level 3 - Aggravated	10	17	10	24	38	32	83.3%	68.4%	53.1%
Level 2 - Weapon/Bodily Harm	101	115	88	279	314	293	59.9%	63.4%	57.7%
Level 1 - Common Assault	296	328	329	864	890	1005	69.7%	73.4%	68.2%
Assault Police Officer	37	20	20	80	56	44	98.8%	98.2%	100.0%
Discharge Firearm with Intent	1	5	0	3	6	7	100.0%	0.0%	0.0%
Other Assaults	1	5	1	6	7	3	83.3%	100.0%	100.0%
TOTAL	446	490	448	1256	1311	1384	69.7%	71.7%	66.3%
Miscellaneous Person Crimes									
Kidnapping/Abduction	0	3	2	2	6	6	100.0%	33.3%	50.0%
Forcible Confinement	9	8	6	29	32	24	82.8%	75.0%	83.3%
Extortion	2	4	3	17	7	9	88.2%	57.1%	44.4%
Criminal Harassment	22	22	12	81	69	42	70.4%	62.3%	57.1%
Indecent/Harassing Calls	3	3	6	9	12	11	44.4%	16.7%	9.1%
TOTAL	36	40	29	138	126	92	73.9%	59.5%	56.5%
TOTAL PERSON CRIMES	624	691	574	1907	1868	1814	61.9%	62.0%	58.1%

Calgary Crime Statistics - CUMULATIVE NUMBERS

MARCH 2014

PROPERTY CRIMES	Current Month			Year To Date			Accumulated To Date		
	Number Of Offences			Number Of Offences			Percentage Cleared		
	2012	2013	2014	2012	2013	2014	2012	2013	2014
Break and Enter									
Residential	268	174	161	642	477	516	19.8%	23.5%	7.6%
Commercial	199	178	218	527	487	517	17.5%	13.1%	7.4%
Other B&E	58	65	74	170	209	210	15.9%	10.5%	14.3%
Unlawfully in Residence	5	7	4	14	9	10	78.6%	88.9%	80.0%
B&E Firearms	0	0	0	0	0	0	-	-	-
TOTAL	530	424	457	1353	1182	1253	19.0%	17.4%	9.2%
Theft									
Theft Over	24	25	23	65	58	48	21.5%	17.2%	6.3%
Theft Under	486	490	467	1354	1417	1356	14.3%	12.1%	9.1%
Possession Stolen Property	69	92	45	232	235	184	100.0%	100.0%	100.0%
From Vehicle Over	12	10	2	30	23	8	0.0%	4.3%	12.5%
From Vehicle Under	613	587	393	1554	1688	1308	3.7%	3.7%	3.0%
Shoplift Over	1	0	0	4	2	2	50.0%	0.0%	0.0%
Shoplift Under	348	301	309	1059	880	945	79.1%	72.6%	71.1%
TOTAL	1553	1505	1239	4298	4303	3851	31.1%	26.0%	26.6%
Vehicle Theft									
Theft Over	262	389	256	854	986	848	12.4%	9.5%	9.7%
Theft Under	34	48	30	110	120	114	22.7%	17.5%	19.3%
Attempted	10	20	7	35	32	25	0.0%	0.0%	0.0%
TOTAL	306	457	293	999	1138	987	13.1%	10.1%	10.5%
Fraud Related									
False Pretences	3	4	1	8	14	3	50.0%	78.6%	33.3%
Forgery/Uttering	22	34	11	75	109	72	76.0%	81.7%	58.3%
Forgery-Credit Card	20	27	15	79	62	61	38.0%	35.5%	14.8%
Impersonation	27	39	29	80	101	90	66.3%	65.3%	35.6%
Food/Lodging/Transportation	17	26	19	46	63	64	65.2%	55.6%	59.4%
Defraud Person (Under/Over)	109	133	94	338	425	305	44.4%	41.2%	24.6%
Other Fraud	16	15	6	42	27	28	66.7%	66.7%	57.1%
TOTAL	214	278	175	668	801	623	52.7%	51.9%	34.2%
Other Property Crimes									
Mischief Over \$5,000	7	6	6	12	15	22	33.3%	20.0%	22.7%
Mischief Under \$5,000	280	256	215	732	649	608	23.5%	27.1%	26.6%
Other Mischief	102	97	82	282	259	238	88.7%	85.3%	81.5%
Vehicle Damage	382	193	156	842	621	535	7.8%	8.1%	7.1%
Arson	13	6	13	39	30	29	12.8%	20.0%	20.7%
TOTAL	784	558	472	1907	1574	1432	26.1%	29.0%	28.3%
TOTAL PROPERTY CRIMES	3387	3222	2636	9225	8998	8146	27.9%	25.7%	22.8%

Calgary Crime Statistics - CUMULATIVE NUMBERS

MARCH 2014

OTHER CRIMINAL CODE	Current Month			Year To Date			Accumulated To Date		
	Number Of Offences			Number Of Offences			Percentage Cleared		
	2012	2013	2014	2012	2013	2014	2012	2013	2014
Vice									
Impede/Communicate	0	18	0	21	29	1	100.0%	100.0%	100.0%
Live on Avails	0	0	0	0	3	1	-	100.0%	100.0%
Bawdy House	0	0	0	0	2	1	-	100.0%	100.0%
Procure/Solicit	0	2	1	0	5	2	-	80.0%	50.0%
TOTAL	0	20	1	21	39	5	100.0%	97.4%	80.0%
Gaming									
Gaming House	0	0	0	0	0	0	-	-	-
Betting	0	0	0	0	0	0	-	-	-
Lotteries/Games	0	0	0	0	0	0	-	-	-
Other	1	0	0	1	0	1	100.0%	-	100.0%
TOTAL	1	0	0	1	0	1	100.0%	-	100.0%
Weapon Related									
Prohibited	20	18	15	49	41	43	100.0%	100.0%	100.0%
Restricted	18	28	13	52	55	46	100.0%	100.0%	100.0%
Explosives	0	0	0	0	1	0	-	100.0%	-
Possess Prohibited	0	0	0	0	0	0	-	-	-
Use Firearm in Offence	0	0	0	0	2	1	-	100.0%	100.0%
FAC Related	7	8	7	17	19	18	100.0%	100.0%	100.0%
Other	42	57	26	164	150	87	98.2%	98.7%	98.9%
TOTAL	87	111	61	282	268	195	98.9%	99.3%	99.5%
Miscellaneous									
Counterfeiting	17	13	9	49	43	37	2.0%	2.3%	2.7%
Obstruct Peace Officer	59	59	58	171	138	131	100.0%	97.8%	100.0%
Bail Violation/Fail to attend	304	229	311	790	748	848	100.0%	100.0%	100.0%
Fail to comply with Probation	46	67	44	143	163	128	100.0%	100.0%	100.0%
Escape Custody/UAL	22	17	10	53	50	29	100.0%	100.0%	96.6%
Attempt to commit/accessory	7	1	1	16	5	4	93.8%	100.0%	75.0%
Miscellaneous	135	140	104	393	388	332	72.3%	75.3%	70.2%
TOTAL	590	526	537	1615	1535	1509	90.2%	90.8%	90.9%
TOTAL OTHER CRIMINAL CODE	678	657	599	1919	1842	1710	91.6%	92.2%	91.9%
TOTAL CRIMINAL CODE (EXCL. TRAFFIC)	4689	4570	3809	13051	12708	11670	42.2%	40.7%	38.5%

Calgary Crime Statistics - CUMULATIVE NUMBERS

MARCH 2014

SELECTED OTHER	Current Month			Year To Date			Accumulated To Date		
	Number Of Offences			Number Of Offences			Percentage Cleared		
	2012	2013	2014	2012	2013	2014	2012	2013	2014
Criminal Code Traffic									
Impaired Causing Death	1	0	0	2	0	0	100.0%	-	-
Impaired Causing Bodily Harm	2	1	0	3	2	0	100.0%	100.0%	-
Impaired > .08	121	113	73	320	305	241	100.0%	100.0%	100.0%
Impaired Driving	160	144	98	420	384	305	100.0%	99.7%	100.0%
Fail/Refuse	39	37	39	105	101	87	100.0%	100.0%	100.0%
Dangerous Causing Death	2	0	0	3	1	0	100.0%	100.0%	-
Dangerous Operation Causing Harm	1	1	0	3	2	0	100.0%	100.0%	-
Dangerous Operation of Motor Vehicle	14	17	13	36	38	33	97.2%	97.4%	100.0%
Impaired Driving (Drugs)	0	0	0	0	1	0	-	100.0%	-
TOTAL	340	313	223	892	834	666	99.9%	99.8%	100.0%
Drugs									
CDSA/NCA/FDA Possession	104	88	92	245	236	274	100.0%	100.0%	100.0%
CDSA/NCA/FDA Trafficking	34	13	5	74	41	41	100.0%	100.0%	100.0%
CDSA/NCA/FDA Possession for Purpose	43	45	32	118	114	97	100.0%	100.0%	100.0%
CDSA/NCA Importation/Export	0	0	0	0	0	0	-	-	-
CDSA/NCA Cultivation/Production	12	4	1	20	10	6	100.0%	100.0%	100.0%
CDSA/NCA/FDA Prop./Proc. from Trafficking	0	0	0	0	0	0	-	-	-
TOTAL	193	150	130	457	401	418	100.0%	100.0%	100.0%
Selected Non Criminal Code Incidents									
Accidental/Sudden Death	60	77	73	170	205	179	N/A	N/A	N/A
Missing Persons	291	271	180	794	665	557	N/A	N/A	N/A
Court Order	105	122	96	262	311	290	N/A	N/A	N/A
Domestic Information	963	1102	1013	3001	3094	2999	N/A	N/A	N/A
Domestic Information Standby	73	78	60	191	252	178	N/A	N/A	N/A
TOTAL	1492	1650	1422	4418	4527	4203	N/A	N/A	N/A
Statutes									
Federal	42	36	29	103	90	86	100.0%	100.0%	100.0%
Provincial	26	52	29	100	138	104	99.0%	100.0%	98.1%
Municipal	12	5	7	28	28	18	100.0%	100.0%	100.0%
TOTAL	80	93	65	231	256	208	99.6%	100.0%	99.0%
TOTAL SELECTED OTHER	2105	2206	1840	5998	6018	5495	99.9%	99.9%	99.8%