

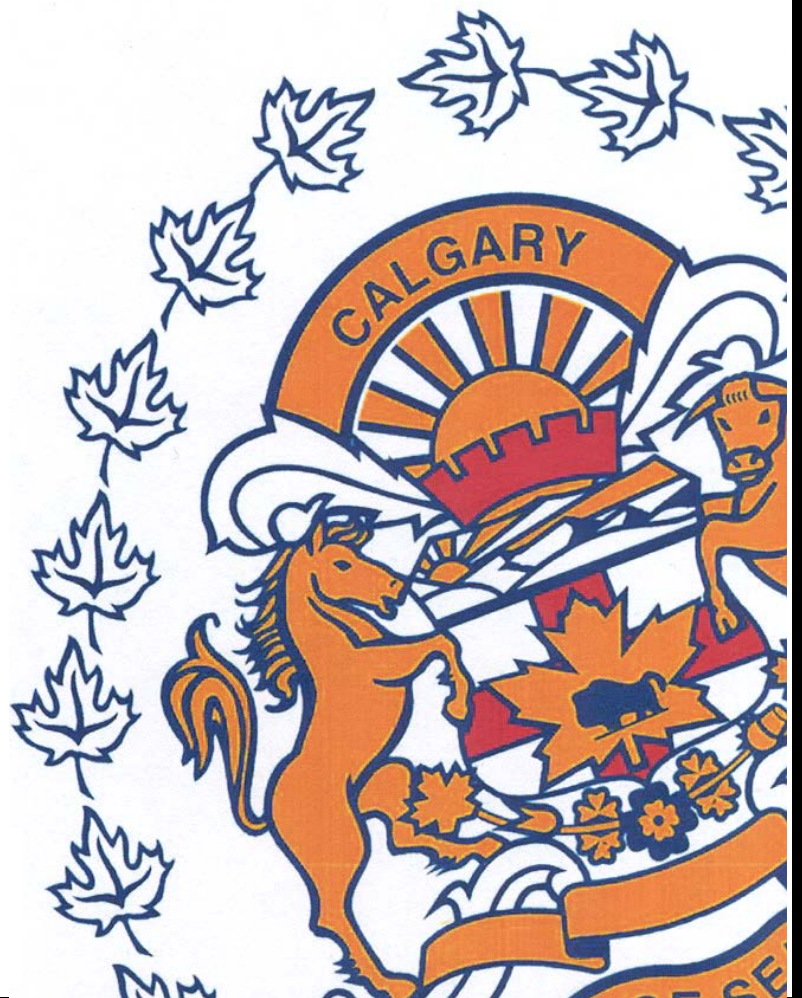
November

Monthly Statistical

REPORT

2014

Compiled by: Centralized Analysis Unit
Crime and Intelligence Analytical Section
Strategic Services Division
© Calgary Police Service 2014



The Calgary Police Service provides this information in good faith but it provides no warranty, nor accepts any liability arising from any incorrect, incomplete or misleading information.

TABLE OF CONTENTS

	<i>Page</i>
Monthly Highlights - STATIC NUMBER COMPARISON	1
Calgary Crime Statistics – STATIC NUMBERS	
Person Crimes	2
Property Crimes	3
Other Criminal Code/Selected Other/Drug Offences	4
Calgary Traffic Collisions – CUMULATIVE NUMBERS	5
Calgary Crime Statistics - CUMULATIVE NUMBERS	6

REPORT NOTES

Most of the statistical data in this report are derived from the Police Information Management System (PIMS) and compiled by the Centralized Analysis Unit. The numbers reported may change on a daily basis due to the dynamic nature of offences being reported and cleared. Disorder data is derived from the CAD system and is static.

To a large extent, the data in this report are based on accumulated to date information. ***(Except for the Monthly Highlights which are based on static information (i.e.: a snap-shot in time).***

- For offences based on accumulated to date information, the number of offences recorded may be higher than previously reported (i.e. in previous statistical reports) due to late reporting. Although this does not greatly affect the number of occurrences for all offences, for some categories it may be as high as a 30-40% increase. The published data for the current period can therefore be expected to increase as time passes. As a result, readers should exercise caution when making comparisons between historical data and current data (i.e. previous year to this year) as data for the historic period will now include late reported offences, but data for the current period will not at this time. To achieve an effective comparison, current data should be evaluated against the originally published data for the historic period.
- Likewise, late reporting affects the number and percentage of offences cleared. Cases are often cleared months and sometimes years later. Consequently, clearances for previous years may appear to be much higher than those of the present year. Cases “cleared by charge” and those “cleared otherwise” are included in these totals.
- For offences based on “static” or “snap-shot” information, data totals will only reflect the number of offences reported in the original publication. They are not updated. Although late reporting may occur, and offences may continue to be cleared as time passes, these new events are not taken into account when preparing this statistical report.

A single incident may result in multiple offences, with each unique *Criminal Code* violation within the incident being counted as an offence. Furthermore, person crime offences are typically counted by the number of victims. Please note that offences are assigned to the month in which the offence "started", not the month they were reported or cleared. Also note that “attempted” incidents are included in these totals. For a more detailed explanation of the Offence counting procedure, please contact the Centralized Analysis Unit.

Monthly Highlights – STATIC NUMBER COMPARISON

To reduce the impact of late reporting, comments on this page are a comparison between the CPS November 2014 Statistical Report and the CPS November 2013 Statistical Report. To achieve an effective comparison, current data should be evaluated against the originally published data for the historic period.

NOVEMBER 2014

PERSON CRIME

- ◆ Reported **person crimes** for the month of November 2014 increased 8.6% when compared to November 2013 (629 offences in November 2014 vs. 579 in November 2013). Additionally, person crimes increased over the five year average for November by 8.0% (or by 47 counts).
- ◆ Total **robbery** offences for the month of November 2014 decreased 37.5% when compared to November 2013 (50 offences in November 2014 vs. 80 in November 2013). During November 2014 there were:
 - 2 **financial robberies** (compared to 1 in November 2013);
 - 13 **commercial robberies** (compared to 27 in November 2013);
 - 32 **commercial robberies** (compared to 47 in November 2013); and
 - 3 **home invasions** (compared to 5 in November 2013).
- ◆ **Assaults** increased 18.6% this month (497 offences in November 2014 vs. 419 in November 2013).
- ◆ **Sex offences** increased 9.5% this month (46 offences in November 2014 compared to 42 in November 2013).

PROPERTY CRIME

- ◆ Reported **property crimes** this month remained at par when compared to November 2013 (3000 offences in November 2014 compared to 2995 in November 2013). Only a minimal increase of 0.2% (5 more incidents) was noted. Property crimes were only slightly above the five year average, by 79 incidents, or 2.7%.
- ◆ **Vehicle theft** (including attempts) decreased 0.7% when compared to November 2013 (430 offences in November 2014 vs. 433 in November 2013).
- ◆ **Theft** offences decreased 2.8% this month when compared to November 2013 (1482 offences in November 2014 vs. 1524 in November 2013).
- ◆ **Break and enter** offences this month increased 10.8% when compared to November 2013 (463 offences this month compared to 418 in November 2013).
 - **Residential break and enter** offences this month decreased 1.0% when compared to November 2013 (205 offences in November 2014 vs. 207 in November 2013); and
 - **Commercial break and enter** offences increased 9.9% this month when compared to November 2013 (156 offences in November 2014 vs. 142 in November 2013).
- ◆ **Fraud related** offences increased 27.6% this month (157 offences in November 2014 vs. 123 in November 2013).

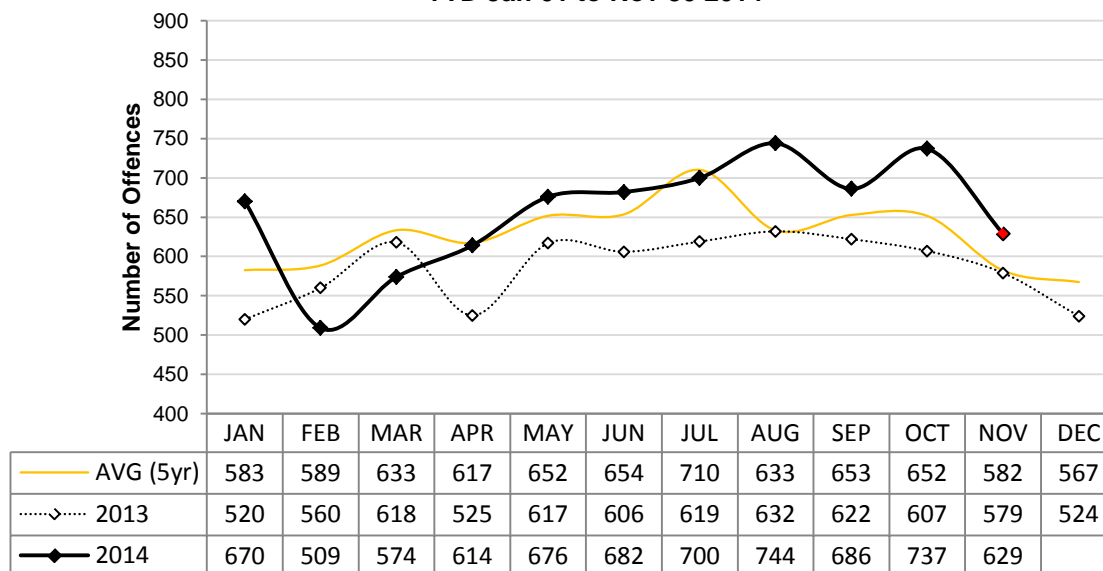
Calgary Person Crime Statistics – STATIC NUMBERS

The static crime numbers on this page are derived from historical Calgary Police Service Monthly Statistical Reports. These statistics are used when writing the Monthly Highlights page in order to make a fair comparison using data which has not been allowed to increase due to late reporting of crime. Using static numbers allows us to compare crime levels at a specific point in time and make an accurate determination of increases or decreases. The cumulative crime numbers (pages 7 – 10) are statistics derived from the CPS Police Information Management System. P.I.M.S. cannot produce static numbers and therefore the cumulative numbers reflect any late reporting of crime. To achieve an effective comparison, current data should be evaluated against the originally published data for the historic period. *Due to the dynamic nature of ongoing homicide investigations these numbers may have been manually updated to reflect the current homicide count. Due to manually updating, it's possible 1 or more homicides may be reflected within the assault category. The homicide counts are provided by the homicide unit.

NOVEMBER 2014

	Current Month Number Of Offences			Year To Date Number Of Offences			
	2013	2014	% Change (2013-2014)	2013	2014	% Change (2013-2014)	% Cleared 2014
PERSON CRIMES							
Homicide*	1	0	-100.0%	21	28	33.3%	71.4%
Other Offences Causing Death	0	0	N/A	0	0	N/A	-
Attempted Homicide	0	0	N/A	12	5	-58.3%	60.0%
Sex Offences	42	46	9.5%	729	721	-1.1%	29.7%
Robbery:							
Financial	1	2	100.0%	31	31	0.0%	51.6%
Commercial	27	13	-51.9%	181	177	-2.2%	39.5%
Person	47	32	-31.9%	546	558	2.2%	20.4%
Home Invasion	5	3	-40.0%	42	48	14.3%	16.7%
Total Robbery	80	50	-37.5%	800	814	1.8%	25.6%
Assault:							
Level 3 - Aggravated	7	8	14.3%	103	102	-1.0%	68.6%
Level 2 - Weapon/Bodily Harm	111	116	4.5%	1327	1341	1.1%	56.7%
Level 1 - Common Assault	277	344	24.2%	3322	4044	21.7%	68.5%
Assault Police Officer	20	27	35.0%	201	172	-14.4%	99.4%
Discharge Firearm with Intent	0	0	N/A	14	19	35.7%	31.6%
Other Assaults	4	2	-50.0%	17	22	29.4%	86.4%
Total Assault	419	497	18.6%	4984	5700	14.4%	66.6%
Misc Person Crimes	37	36	-2.7%	439	426	-3.0%	56.8%
TOTAL PERSON CRIMES	579	629	8.6%	6985	7694	10.2%	58.3%

**Person Crime-Static Numbers
YTD Jan 01 to Nov 30 2014**



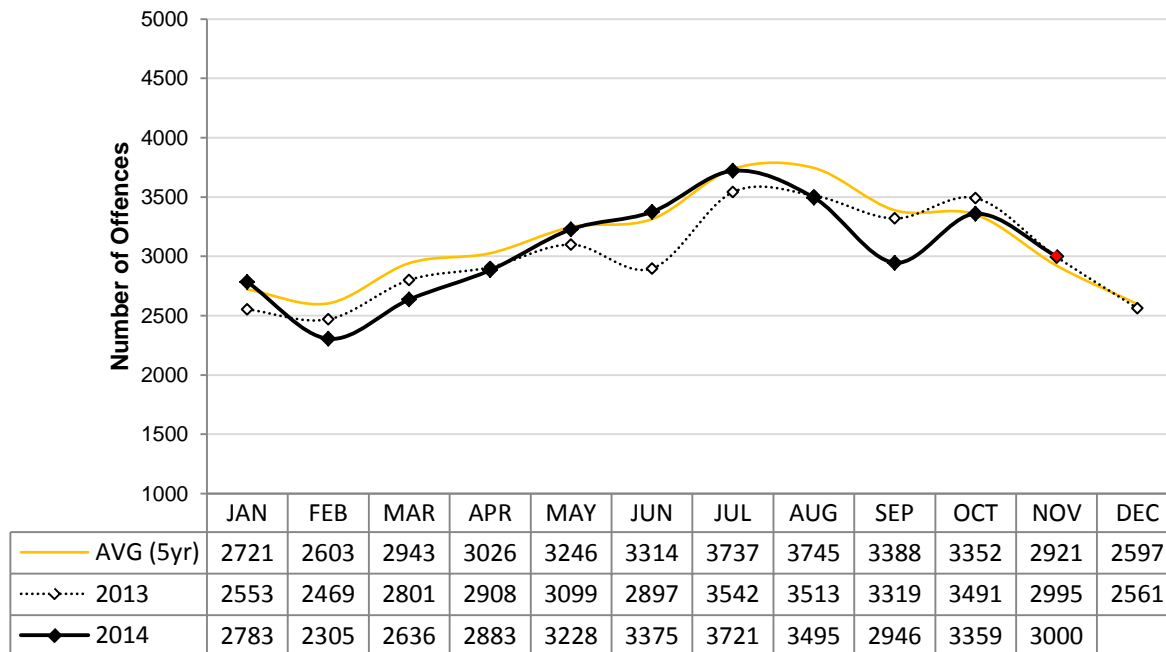
Calgary Property Crime Statistics – STATIC NUMBERS

The static crime numbers on this page are derived from historical Calgary Police Service Monthly Statistical Reports. These statistics are used when writing the Monthly Highlights page in order to make a fair comparison using data which has not been allowed to increase due to late reporting of crime. Using static numbers allows us to compare crime levels at a specific point in time and make an accurate determination of increases or decreases. The cumulative crime numbers (pages 7 – 10) are statistics derived from the CPS Police Information Management System. P.I.M.S. cannot produce static numbers and therefore the cumulative numbers reflect any late reporting of crime. To achieve an effective comparison, current data should be evaluated against the originally published data for the historic period.

NOVEMBER 2014

	Current Month			Year To Date			
	Number Of Offences			Number Of Offences			
	2013	2014	% Change (2013-2014)	2013	2014	% Change (2013-2014)	% Cleared 2014
PROPERTY CRIMES							
Break and Enter:							
<i>Residential B&E</i>	207	205	-1.0%	2324	2285	-1.7%	15.5%
<i>Commercial B&E</i>	142	156	9.9%	1835	1699	-7.4%	12.9%
<i>Other B&E</i>	69	97	40.6%	968	1110	14.7%	12.3%
<i>Unlawfully in Residence</i>	0	5	N/A	35	55	57.1%	80.0%
Total Break and Enter	418	463	10.8%	5162	5149	-0.3%	14.7%
Theft	1524	1482	-2.8%	18265	17352	-5.0%	20.2%
Vehicle Theft (including attempts)	433	430	-0.7%	4700	4356	-7.3%	10.6%
Fraud Related	123	157	27.6%	2313	2745	18.7%	32.7%
Other Property Crimes	497	468	-5.8%	6605	6383	-3.4%	25.9%
TOTAL PROPERTY CRIMES	2995	3000	0.2%	37045	35985	-2.9%	20.2%

**Property Crime-Static Numbers
YTD Jan 01 to Nov 30 2014**



Calgary Other Crime Statistics – STATIC NUMBERS

The static crime numbers on this page are derived from historical Calgary Police Service Monthly Statistical Reports. These statistics are used when writing the Monthly Highlights page in order to make a fair comparison using data which has not been allowed to increase due to late reporting of crime. Using static numbers allows us to compare crime levels at a specific point in time and make an accurate determination of increases or decreases. The cumulative crime numbers (pages 7 – 10) are statistics derived from the CPS Police Information Management System. P.I.M.S. cannot produce static numbers and therefore the cumulative numbers reflect any late reporting of crime. To achieve an effective comparison, current data should be evaluated against the originally published data for the historic period.

NOVEMBER 2014

	Current Month Number Of Offences			Year To Date Number Of Offences			% Cleared 2014
	2013	2014	% Change (2013-2014)	2013	2014	% Change (2013-2014)	
OTHER CRIMINAL CODE							
Vice	4	0	-100.0%	131	65	-50.4%	95.4%
Gaming	0	0	N/A	1	1	0.0%	100.0%
Weapon Related	52	89	71.2%	878	816	-7.1%	98.9%
Misc	451	447	-0.9%	5610	6064	8.1%	89.3%
TOTAL OTHER CRIMINAL CODE	507	536	5.7%	6620	6946	4.9%	90.5%
TOTAL OVERALL CRIMINAL CODE (excluding traffic)	4081	4165	2.1%	50650	51486	1.7%	36.7%
SELECTED OTHER							
Criminal Code Traffic	231	183	-20.8%	2703	2460	-9.0%	99.9%
Drugs	138	108	-21.7%	1620	1690	4.3%	99.9%
Selected Non Criminal Code:							
<i>Accidental/Sudden Death</i>	63	53	-15.9%	655	632	-3.5%	N/A
<i>Missing Persons</i>	171	230	34.5%	2648	2687	1.5%	N/A
<i>Court Order</i>	95	107	12.6%	1160	1092	-5.9%	N/A
<i>Domestic Information</i>	1019	1033	1.4%	11986	11688	-2.5%	N/A
<i>Domestic Information Standby</i>	58	79	36.2%	829	781	-5.8%	N/A
Total Selected Non Criminal Code	1406	1502	6.8%	17278	16880	-2.3%	N/A
Statutes (Federal/Provincial/Municipal)	46	50	8.7%	768	745	-3.0%	99.2%
TOTAL SELECTED OTHER	1821	1843	1.2%	22369	21775	-2.7%	99.8%

Number of Drug Offences Year To Date

	2010	2011	2012	2013	2014	Trend
Demand	1001	874	936	974	999	
Supply	1123	793	716	646	691	
Total	2124	1667	1652	1620	1690	
	Drug Type					
Cannabis	1176	1052	951	980	933	
Cocaine/Crack	787	474	544	483	538	
Heroin	9	20	24	35	53	
All Other Drugs	152	121	133	122	166	
Total	2124	1667	1652	1620	1690	

Calgary Traffic Collisions – CUMULATIVE NUMBERS

NOVEMBER 2014

	Current Month # of Collisions			Year To Date # of Collisions			Year To Date Rate per 100,000 population		
	2012	2013	2014	2012	2013	2014	2012	2013	2014
Fatal Collisions	0	2	3	26	35	27	2.3	3.0	2.3
Injury Collisions	240	275	250	2482	2591	2674	221.6	224.0	223.7
Property Damage Collisions	4304	4334	4253	35600	36920	38993	3177.9	3191.9	3262.5
e-Collision Reports*	21	27	635	245	302	1250	21.9	26.1	104.6
Total Collisions	4565	4638	5141	38353	39848	42944	3423.7	3445.0	3593.1
<i>Parking Lot Collisions</i>	714	692	567	7522	8036	7720	671.5	694.7	645.9
Total Reportable Collisions	3851	3946	4574	30831	31812	35224	2752.2	2750.3	2947.1

Source: Cumulative data; PIMS (December 2014)

NOTE: Total Reportable Collisions exclude collisions along private roadways or public parking lots.

The number of reported traffic collisions may continue to increase over time. Due to data collection and reporting methods, totals for the current month may not be comparable to previous years.

* e-Collision reporting is a data system which became operational in July 2009. At the time this report was published it was not possible to separate all collisions based on level of severity or to determine whether they occurred in a parking lot. Therefore, as e-Collision reports are completed and entered into the CPS records management system, it is determined whether or not they are reportable, and they are removed from the e-Collision count total and reclassified based on level of severity.

Top Collision Locations and Primary Cause of Events

Number of Collisions	Location	Primary Cause of Event	Primary Direction of Travel
33	Deerfoot Trail SE & Glenmore Trail SE	Rear End	S
27	Deerfoot Trail NE & Memorial Drive NE	Rear End	S
27	Deerfoot Trail NE & 16 Avenue NE	Rear End	E
21	Deerfoot Trail SE & 17 Avenue SE	Rear End	N
19	Deerfoot Trail NE & McKnight Boulevard NE	Rear End	N
19	Deerfoot Trail SE & Peigan Trail SE	Rear End	S
19	Glenmore Trail SW & 14 Street SW	Rear End	E
18	Deerfoot Trail NE & Stoney Trail NE	Struck Object	S
15	Crowchild Trail SW & Glenmore Trail SW	Rear End	E
14	Deerfoot Trail NE & 64 Avenue NE	Rear End	N

Source: Static data; PIMS (December 2014)

When interpreting these data, it is imperative to consider that these figures represent only the number of collisions and they do not account for associated traffic volumes, weather conditions, collision types, driver experience, or any other variables which may or may not be significant factors. The locations denoted might be associated with intersections, on/off ramps, or mid-block locations, which are in close proximity but not necessarily at the exact specified locations. Collisions occurring on private property, such as shopping mall parking lots have been excluded from the data in order to strictly assess intersection related collisions.

NOTE: This table excludes reports made through the e-Collision reporting system.

Calgary Crime Statistics - CUMULATIVE NUMBERS

NOVEMBER 2014

<i>PERSON CRIMES</i>	Current Month			Year To Date			Accumulated To Date		
	Number Of Offences			Number Of Offences			Percentage Cleared		
	2012	2013	2014	2012	2013	2014	2012	2013	2014
Homicide									
1st Degree	0	1	0	7	9	13	57.1%	77.8%	61.5%
2nd Degree	1	0	0	8	12	14	87.5%	91.7%	78.6%
Manslaughter	0	0	0	2	1	1	100.0%	100.0%	100.0%
Infanticide	0	0	0	0	0	0	-	-	-
TOTAL	1	1	0	17	22	28	76.5%	86.4%	71.4%
Other Offences Causing Death									
Criminal Negligence	0	0	0	0	3	0	-	100.0%	-
Other Offences Causing Death	0	0	0	0	0	0	-	-	-
TOTAL	0	0	0	0	3	0	-	100.0%	-
Attempted Homicide									
Attempted Murder	1	1	0	14	9	5	35.7%	66.7%	60.0%
Conspiracy To Commit	0	0	0	4	4	0	100.0%	100.0%	-
TOTAL	1	1	0	18	13	5	50.0%	76.9%	60.0%
Sex Offences									
Level 3 Aggravated Sexual Assault	0	0	1	0	4	3	-	25.0%	33.3%
Level 2 Weapon/Threat/Bodily Harm	0	2	1	2	9	5	0.0%	66.7%	60.0%
Level 1 Sexual Assault	53	47	30	581	536	466	27.7%	28.0%	23.6%
Indecent Acts	10	5	8	133	136	152	52.6%	47.1%	40.1%
Other	2	8	6	100	108	95	57.0%	56.5%	41.1%
TOTAL	65	62	46	816	793	721	35.3%	35.6%	29.7%
Robbery									
Financial	2	1	2	26	31	31	76.9%	67.7%	51.6%
Commercial	15	27	13	194	182	177	45.9%	40.7%	39.5%
Person	44	49	32	568	557	558	29.6%	22.3%	20.4%
Home Invasion	2	6	3	33	43	48	24.2%	20.9%	16.7%
Robbery of Firearm	0	0	0	0	0	0	-	-	-
TOTAL	63	83	50	821	813	814	34.7%	28.0%	25.6%
Assault									
Level 3 - Aggravated	10	8	8	105	106	102	68.6%	76.4%	68.6%
Level 2 - Weapon/Bodily Harm	92	115	116	1230	1338	1341	59.4%	59.0%	56.7%
Level 1 - Common Assault	322	297	344	3441	3374	4044	70.0%	69.0%	68.5%
Assault Police Officer	11	19	27	217	200	172	99.5%	98.5%	99.4%
Discharge Firearm with Intent	0	0	0	12	16	19	100.0%	62.5%	31.6%
Other Assaults	2	4	2	24	17	22	83.3%	94.1%	86.4%
TOTAL	437	443	497	5029	5051	5700	68.8%	67.7%	66.6%
Miscellaneous Person Crimes									
Kidnapping/Abduction	3	6	6	28	36	33	46.4%	47.2%	36.4%
Forcible Confinement	9	15	13	119	101	120	79.8%	82.2%	83.3%
Extortion	0	4	2	33	27	45	75.8%	48.1%	42.2%
Criminal Harassment	25	16	11	277	262	193	63.9%	58.4%	53.9%
Indecent/Harassing Calls	5	1	4	40	42	35	32.5%	28.6%	20.0%
TOTAL	42	42	36	497	468	426	65.0%	59.4%	56.8%
TOTAL PERSON CRIMES	609	632	629	7198	7163	7694	60.8%	59.2%	58.3%

Calgary Crime Statistics - CUMULATIVE NUMBERS

NOVEMBER 2014

<i>PROPERTY CRIMES</i>	Current Month			Year To Date			Accumulated To Date		
	Number Of Offences			Number Of Offences			Percentage Cleared		
	2012	2013	2014	2012	2013	2014	2012	2013	2014
Break and Enter									
Residential	217	219	205	2402	2356	2285	18.2%	21.6%	15.5%
Commercial	228	153	156	1966	1857	1699	16.7%	15.8%	12.9%
Other B&E	98	75	97	809	991	1109	10.4%	9.1%	12.3%
Unlawfully in Residence	3	1	5	37	36	55	83.8%	83.3%	80.0%
B&E Firearms	0	0	0	1	0	1	100.0%	-	0.0%
TOTAL	546	448	463	5215	5240	5149	16.9%	17.6%	14.7%
Theft									
Theft Over	18	30	20	237	256	221	21.1%	14.8%	11.8%
Theft Under	482	584	491	5831	6674	6468	13.1%	10.0%	9.2%
Possession Stolen Property	94	70	95	905	894	893	100.0%	100.0%	100.0%
From Vehicle Over	5	4	3	109	82	67	5.5%	4.9%	4.5%
From Vehicle Under	602	684	563	7728	7607	6916	4.5%	3.9%	3.0%
Shoplift Over	3	0	2	10	8	15	60.0%	25.0%	26.7%
Shoplift Under	295	309	308	3489	3178	3633	77.3%	72.4%	72.4%
TOTAL	1499	1681	1482	18309	18699	18213	26.1%	22.5%	24.0%
Vehicle Theft									
Theft Over	324	405	356	3519	4003	3599	11.0%	8.6%	9.5%
Theft Under	45	46	67	473	608	636	20.5%	18.9%	18.4%
Attempted	8	18	7	129	169	121	2.3%	2.4%	2.5%
TOTAL	377	469	430	4121	4780	4356	11.8%	9.7%	10.6%
Fraud Related									
False Pretences	1	3	1	33	27	19	48.5%	70.4%	57.9%
Forgery/Uttering	37	23	12	291	317	289	72.5%	75.1%	56.4%
Forgery-Credit Card	24	26	17	282	207	282	34.0%	33.3%	20.9%
Impersonation	38	32	24	312	320	426	63.5%	58.4%	35.4%
Food/Lodging/Transportation	22	14	17	212	212	206	61.3%	59.4%	57.3%
Defraud Person (Under/Over)	147	131	82	1305	1503	1420	42.2%	38.4%	24.2%
Other Fraud	14	8	4	153	88	103	66.7%	64.8%	50.5%
TOTAL	283	237	157	2588	2674	2745	50.4%	47.6%	32.7%
Other Property Crimes									
Mischief Over \$5,000	4	9	6	64	70	86	25.0%	22.9%	20.9%
Mischief Under \$5,000	216	208	156	2744	2716	2347	25.4%	31.6%	24.6%
Other Mischief	85	77	68	1129	1277	965	84.8%	83.3%	82.6%
Vehicle Damage	199	239	217	3190	2949	2770	8.7%	8.1%	8.2%
Arson	16	14	21	198	173	215	19.2%	17.3%	16.3%
TOTAL	520	547	468	7325	7185	6383	27.1%	30.7%	25.9%
TOTAL PROPERTY CRIMES	3225	3382	3000	37558	38578	36846	25.1%	23.5%	22.1%

Calgary Crime Statistics - CUMULATIVE NUMBERS

NOVEMBER 2014

<i>OTHER CRIMINAL CODE</i>	Current Month			Year To Date			Accumulated To Date		
	Number Of Offences			Number Of Offences			Percentage Cleared		
	2012	2013	2014	2012	2013	2014	2012	2013	2014
Vice									
Impede/Communicate	1	0	0	62	92	48	100.0%	100.0%	100.0%
Live on Avails	1	0	0	3	9	3	66.7%	100.0%	100.0%
Bawdy House	2	0	0	3	7	3	100.0%	100.0%	100.0%
Procure/Solicit	2	6	0	6	35	11	83.3%	94.3%	72.7%
TOTAL	6	6	0	74	143	65	97.3%	98.6%	95.4%
Gaming									
Gaming House	0	0	0	0	1	0	-	100.0%	-
Betting	0	0	0	0	0	0	-	-	-
Lotteries/Games	0	0	0	0	0	0	-	-	-
Other	0	0	0	2	0	1	100.0%	-	100.0%
TOTAL	0	0	0	2	1	1	100.0%	100.0%	100.0%
Weapon Related									
Prohibited	11	6	10	156	120	136	100.0%	100.0%	100.0%
Restricted	20	22	22	213	200	203	100.0%	99.5%	100.0%
Explosives	0	0	0	1	1	0	100.0%	100.0%	-
Possess Prohibited	0	0	0	0	0	0	-	-	-
Use Firearm in Offence	0	0	1	4	6	6	100.0%	100.0%	100.0%
FAC Related	6	7	15	73	80	79	100.0%	100.0%	100.0%
Other	46	29	41	546	499	392	98.9%	98.4%	97.7%
TOTAL	83	64	89	993	906	816	99.4%	99.0%	98.9%
Miscellaneous									
Counterfeiting	45	5	11	230	124	194	6.1%	3.2%	4.6%
Obstruct Peace Officer	40	30	28	554	471	466	99.3%	98.7%	99.4%
Bail Violation/Fail to attend	285	277	216	3020	2980	3172	100.0%	99.9%	100.0%
Fail to comply with Probation	56	39	39	606	572	536	100.0%	100.0%	100.0%
Escape Custody/UAL	15	17	17	201	179	133	99.5%	100.0%	96.2%
Attempt to commit/accessory	1	5	2	36	29	23	88.9%	96.6%	87.0%
Miscellaneous	135	118	134	1419	1391	1540	72.7%	72.1%	70.5%
TOTAL	577	491	447	6066	5746	6064	89.9%	91.0%	89.3%
TOTAL OTHER CRIMINAL CODE	666	561	536	7135	6796	6946	91.3%	92.2%	90.5%
TOTAL CRIMINAL CODE (EXCL. TRAFFIC)	4500	4575	4165	51891	52537	51486	39.1%	37.3%	36.7%

Calgary Crime Statistics - CUMULATIVE NUMBERS

NOVEMBER 2014

<i>SELECTED OTHER</i>	Current Month			Year To Date			Accumulated To Date		
	Number Of Offences			Number Of Offences			Percentage Cleared		
	2012	2013	2014	2012	2013	2014	2012	2013	2014
Criminal Code Traffic									
Impaired Causing Death	0	0	1	3	3	1	100.0%	100.0%	100.0%
Impaired Causing Bodily Harm	0	0	0	9	6	2	100.0%	100.0%	100.0%
Impaired > .08	91	75	60	1169	981	845	100.0%	100.0%	100.0%
Impaired Driving.....	121	110	87	1498	1267	1120	100.0%	99.9%	100.0%
Fail/Refuse	41	42	26	395	339	341	100.0%	100.0%	100.0%
Dangerous Causing Death	0	0	0	6	4	0	100.0%	100.0%	-
Dangerous Operation Causing Harm	0	0	0	6	12	5	100.0%	100.0%	100.0%
Dangerous Operation of Motor Vehicle.....	11	12	9	122	129	145	99.2%	99.2%	98.6%
Impaired Driving (Drugs)	0	0	0	0	1	1	-	100.0%	100.0%
TOTAL	264	239	183	3208	2742	2460	100.0%	99.9%	99.9%
Drugs									
CDSA/NCA/FDA Possession	89	95	61	946	991	999	100.0%	100.0%	100.0%
CDSA/NCA/FDA Trafficking	19	16	12	284	202	257	100.0%	100.0%	99.6%
CDSA/NCA/FDA Possession for Purpose	28	40	34	388	435	410	100.0%	100.0%	100.0%
CDSA/NCA Importation/Export	0	0	0	5	2	0	100.0%	100.0%	-
CDSA/NCA Cultivation/Production	2	3	1	50	34	24	100.0%	100.0%	100.0%
CDSA/NCA/FDA Prop./Proc. from Trafficking	0	0	0	0	0	0	-	-	-
TOTAL	138	154	108	1673	1664	1690	100.0%	100.0%	99.9%
Selected Non Criminal Code Incidents									
Accidental/Sudden Death.....	69	64	53	669	658	632	N/A	N/A	N/A
Missing Persons	262	173	230	2980	2657	2687	N/A	N/A	N/A
Court Order	108	102	107	1032	1170	1092	N/A	N/A	N/A
Domestic Information.....	1052	1044	1033	11638	12072	11688	N/A	N/A	N/A
Domestic Information Standby	64	58	79	816	832	781	N/A	N/A	N/A
TOTAL	1555	1441	1502	17135	17389	16880	N/A	N/A	N/A
Statutes									
Federal	27	32	16	365	285	282	100.0%	99.3%	100.0%
Provincial	27	20	31	406	416	397	99.0%	99.5%	98.5%
Municipal	9	5	3	101	85	66	99.0%	100.0%	100.0%
TOTAL	63	57	50	872	786	745	99.4%	99.5%	99.2%
TOTAL SELECTED OTHER	2020	1891	1843	22888	22581	21775	99.9%	99.9%	99.8%