

# Welcome

## 144 Avenue N.W.

# Functional Planning Study

The City of Calgary is undertaking a functional planning study for 144 Avenue N.W. which includes the West Nose Creek crossing and the future realignment of Symons Valley Road onto Mountain View Road.

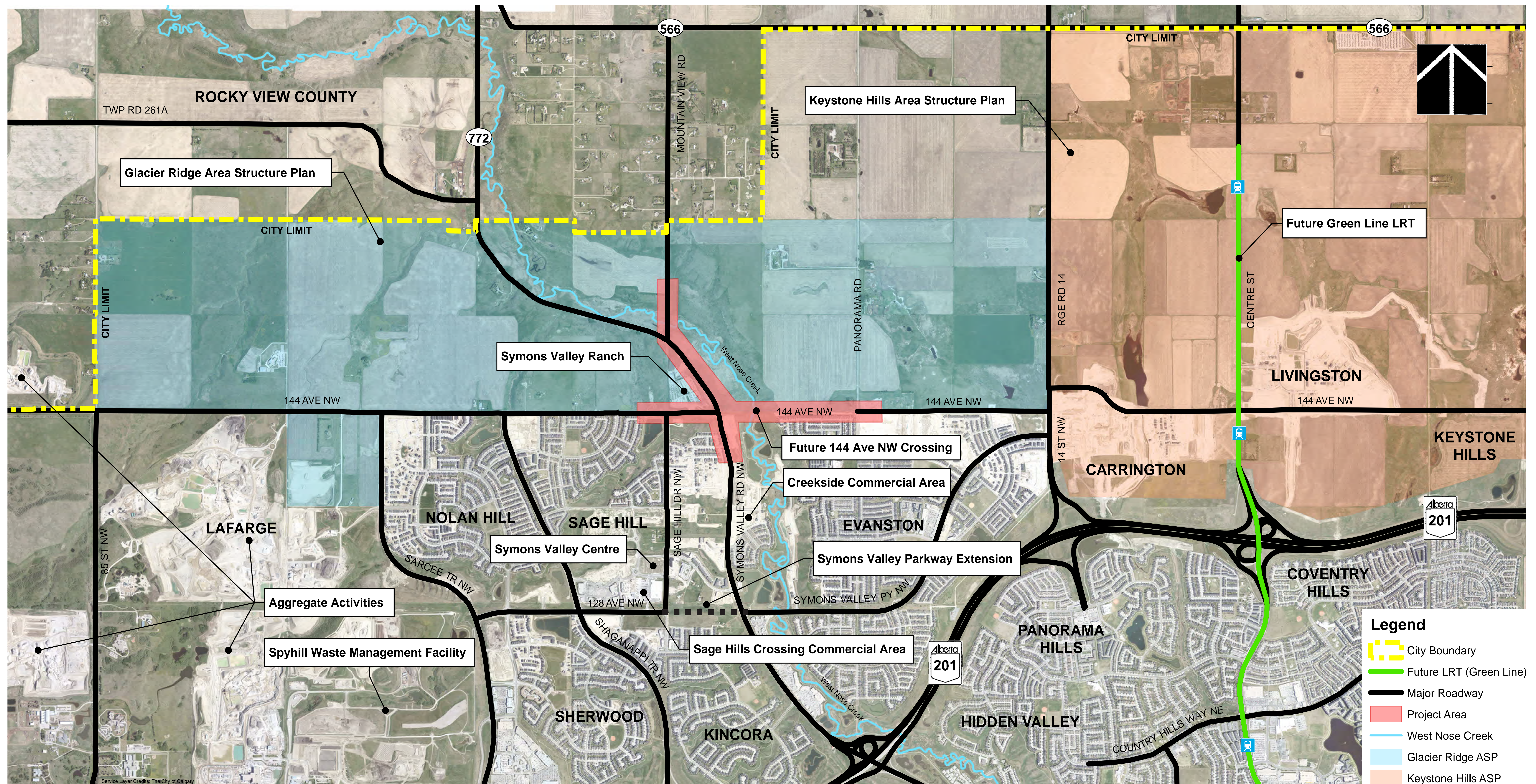
At this open house, you will be able to:

- Explore the concepts developed and evaluated for the 144 Avenue N.W. and Symons Valley Road alignments
- Explore the West Nose Creek crossing options and 144 Avenue N.W. and Symons Valley Road intersection types
- Provide your feedback on the road alignments, creek crossing options and intersection types

Please review the boards and share your feedback and questions. Members of the project team are available to provide information and answer your questions.



# Study area overview



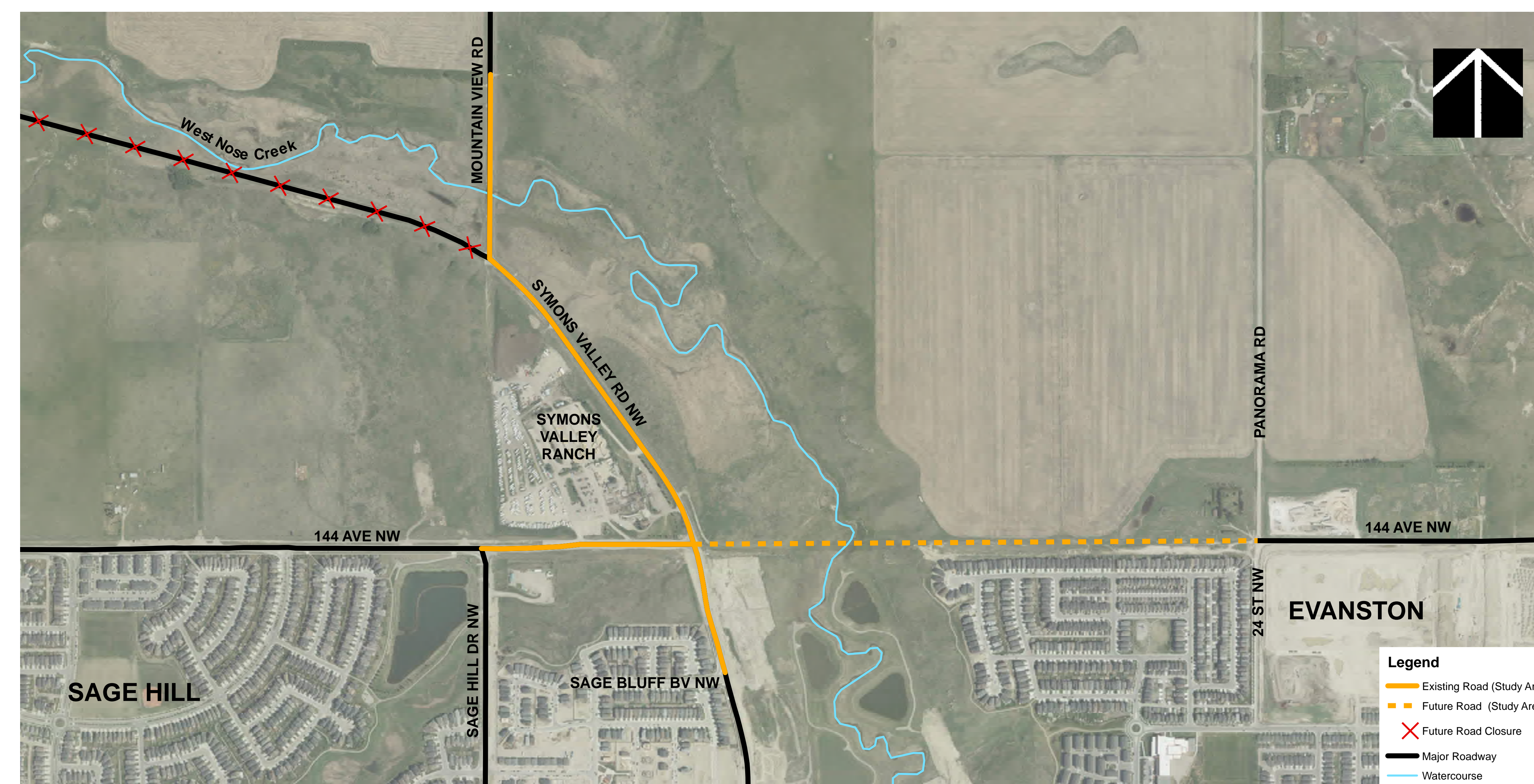


# Study objectives

The study will provide future recommendations within the 144 Avenue N.W. study area that will:

- Better accommodate people who walk, bike, take transit and drive
- Improve safety for those who travel through, or live along, the study area
- Extend 144 Avenue N.W. to provide a primary transit route and connection to the future Green Line LRT and provide missing east-west link
- Accommodate the future Symons Valley Road closure / realignment to provide more direct connection to Highway 566
- Minimize impacts within the study area

## Study area



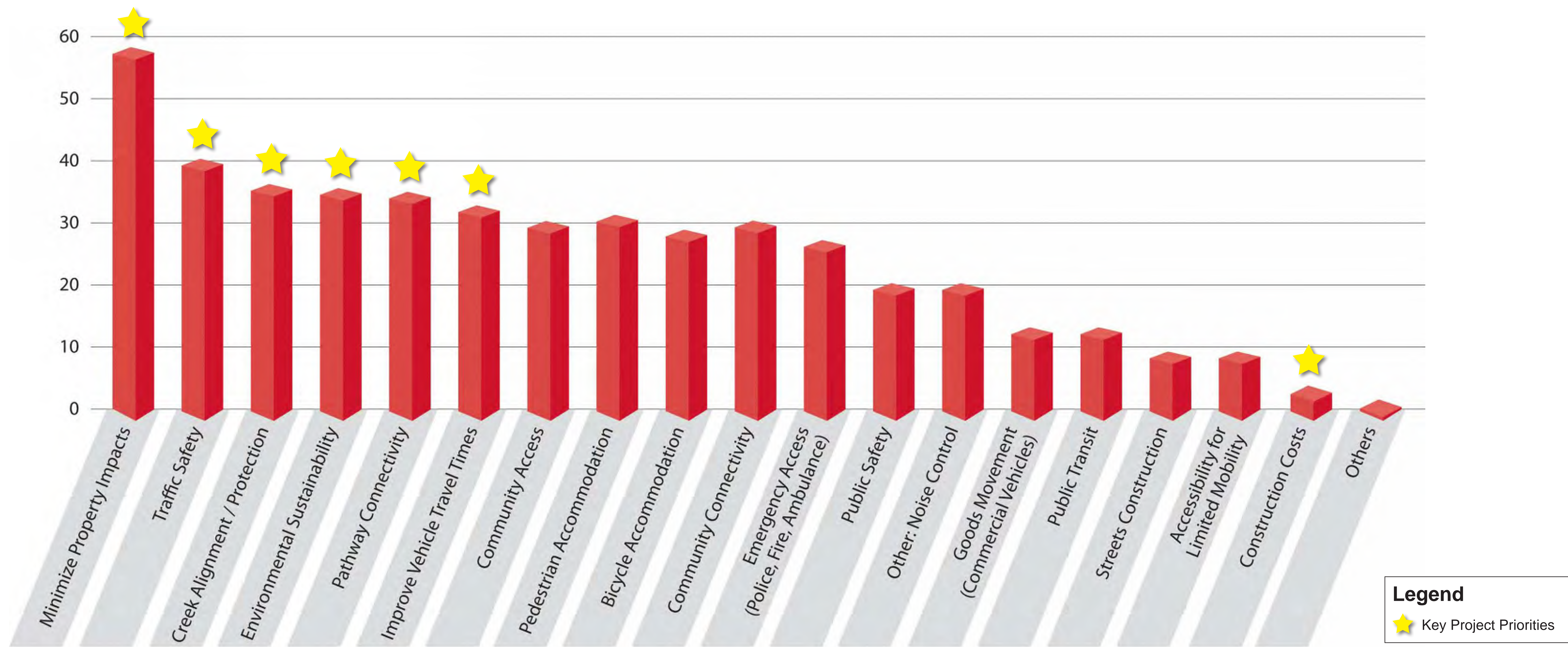


# Background

- 2009** **Calgary Transportation Plan** classifies 144 Avenue N.W. as an Arterial Street. It is planned to be the only continuous east-west connection north of Stoney Trail.
- 2009** **Calgary North Northwest Network Study 144 Avenue North** recommends 144 Avenue N.W. right-of-way be protected for a future 6 lane divided roadway.
- 2015** **Investing in Mobility: Transportation Infrastructure Investment Plan (TIIP)** identifies the bridge crossing of West Nose Creek as a leading infrastructure requirement for development of any new communities north of 144 Avenue N.W.
- 2015** **Glacier Ridge Area Structure Plan** identifies and approves roadway network improvements that will allow for the realignment of Symons Valley Road to Mountain View Road.
- July 2018** **Council approves 14 new suburban communities** to be built in the coming years. Four of the approved communities are located in the Glacier Ridge ASP.
- Sept. 2018** **144 Avenue N.W. Functional Planning Study** begins. The 144 Avenue N.W. Functional Planning Study will result in design recommendations that will guide the development of the future transportation network. Capital funding for the construction of the bridge has been allocated within the 2019-2022 budget cycle. Construction timeline is to be determined.



# What we heard - priorities



## Key Priorities

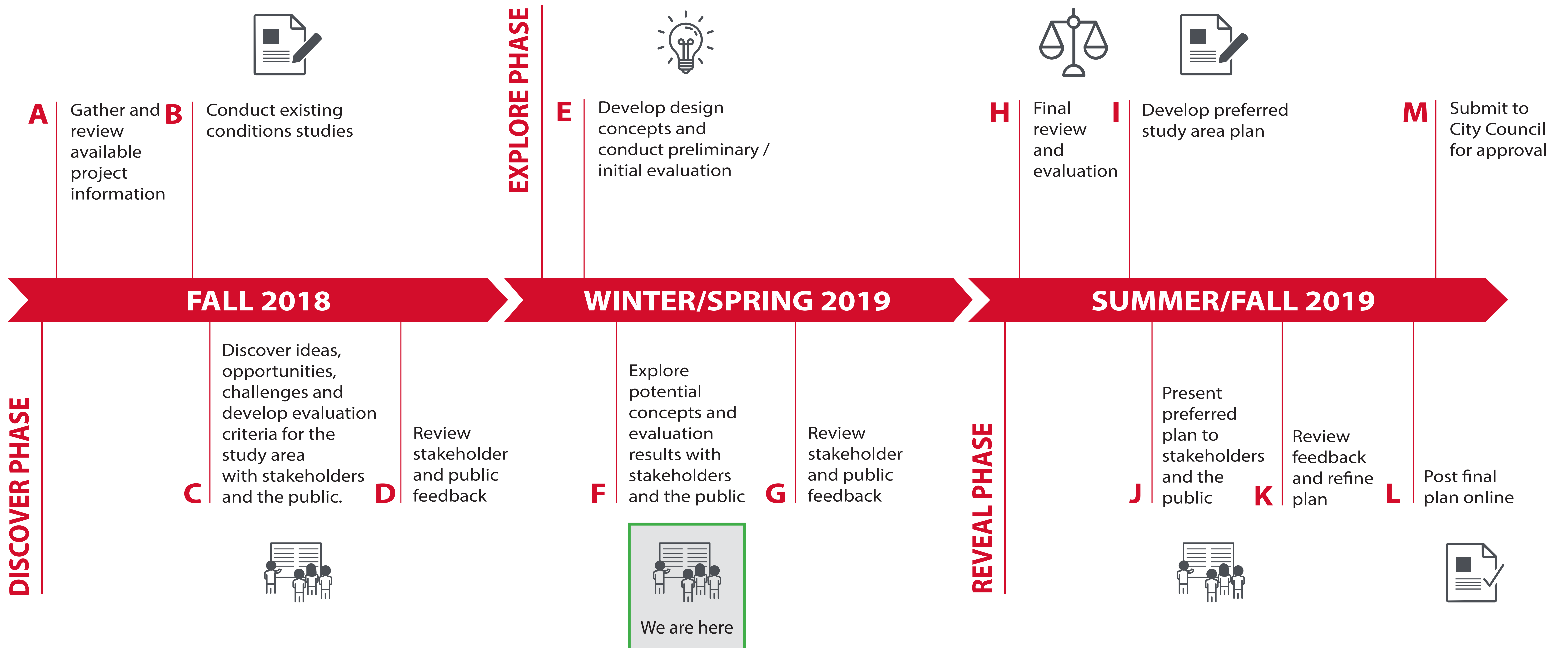
Combining feedback received from Calgarians and City priorities, the following list identifies the key priorities for the project:

- Minimize property impacts
- Traffic safety
- Creek alignment / protection
- Environmental sustainability
- Pathway connectivity
- Improve vehicle travel times
- Construction costs





# Study process

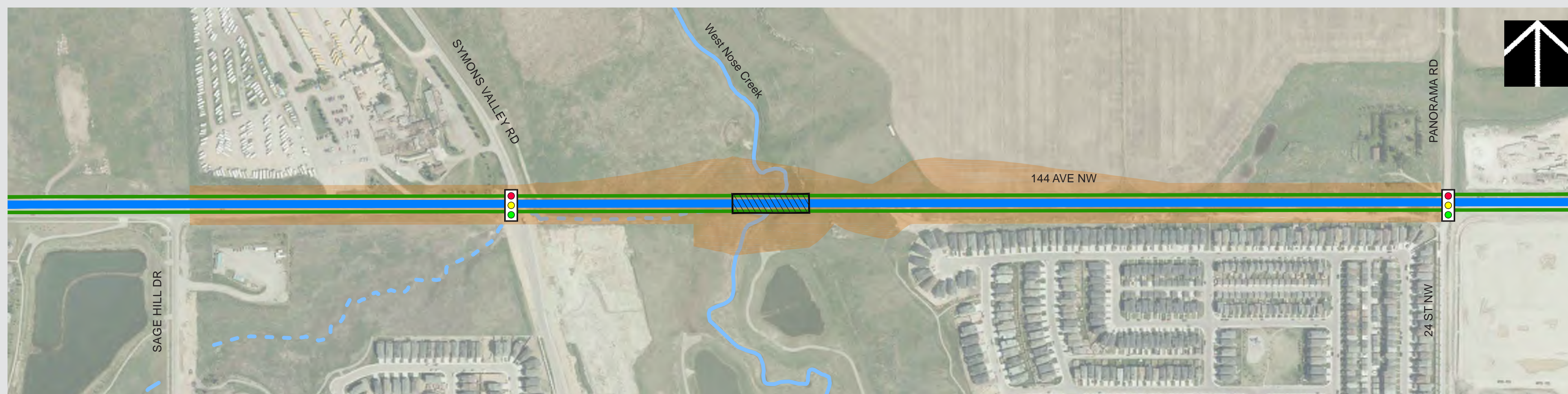




# 144 Avenue N.W. options

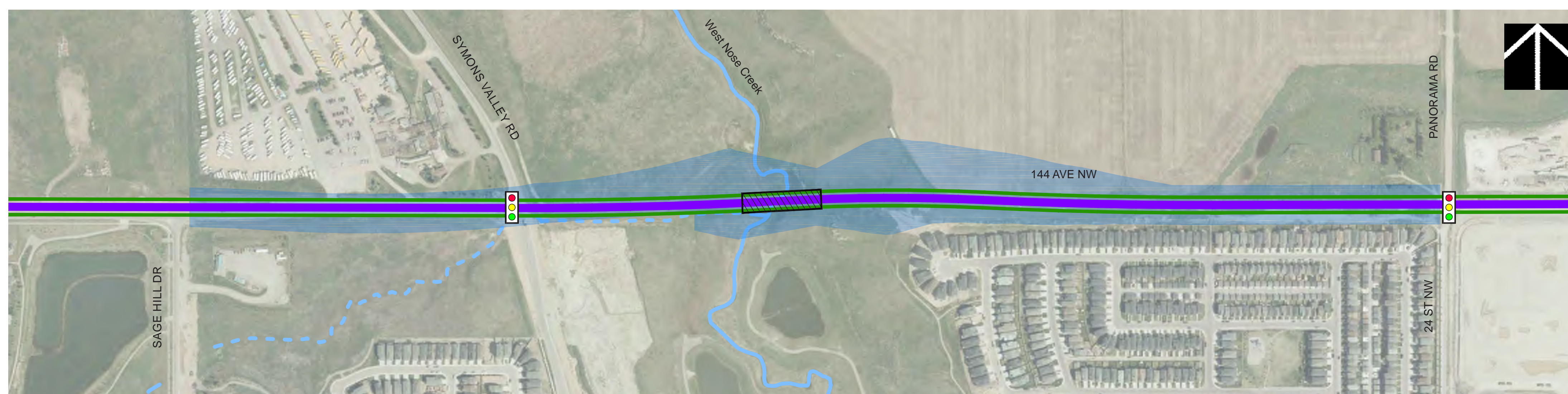
Using what we heard from Calgarians about their priorities, along with City priorities, the project team developed three options for 144 Avenue N.W.

## Option A: Straight Alignment (Preferred)



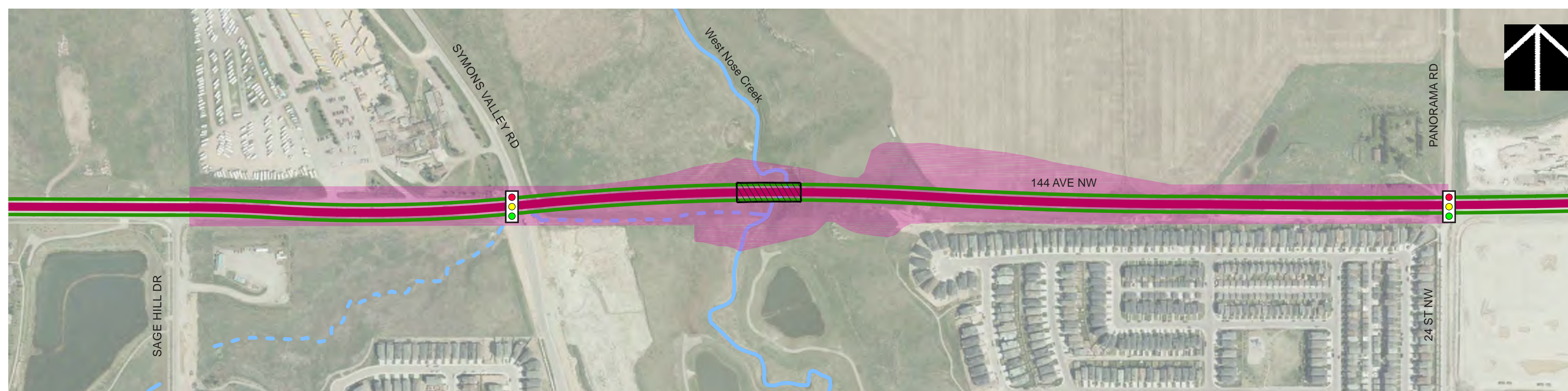
- Lowest property impacts to undeveloped properties north of 144 Avenue N.W.
- Lowest construction cost

## Option B: North Shift Over West Nose Creek



- Increases property impacts to the undeveloped properties north of 144 Avenue N.W.
- Highest construction cost

## Option C: North Shift Over West Nose Creek with Adjusted Intersection Angle



- Increases property impacts to the undeveloped properties north of 144 Avenue N.W.
- Fewer property impacts to the northwest and southeast of the Symons Valley Road intersection
- Least impactful to West Nose Creek

### All options provide the following:

- No direct property impacts to adjacent homes
- Six lanes on 144 Avenue N.W.
- Pathways along both sides of 144 Avenue N.W.

|          | Public and City Key Priorities |                |                              |                              |                      |                             |                    |
|----------|--------------------------------|----------------|------------------------------|------------------------------|----------------------|-----------------------------|--------------------|
|          | Minimize Property Impacts      | Traffic Safety | Creek Alignment / Protection | Environmental Sustainability | Pathway Connectivity | Improve Vehicle Travel Time | Construction Costs |
| Option A | Green                          | Green          | Yellow                       | Yellow                       | Green                | Green                       | Green              |
| Option B | Pink                           | Green          | Yellow                       | Yellow                       | Green                | Green                       | Pink               |
| Option C | Yellow                         | Green          | Green                        | Yellow                       | Green                | Green                       | Yellow             |

Legend: ● ALIGNED WITH PRIORITIES ● SOMEWHAT ALIGNED WITH PRIORITIES ● LESS ALIGNED WITH PRIORITIES

**LEGEND**

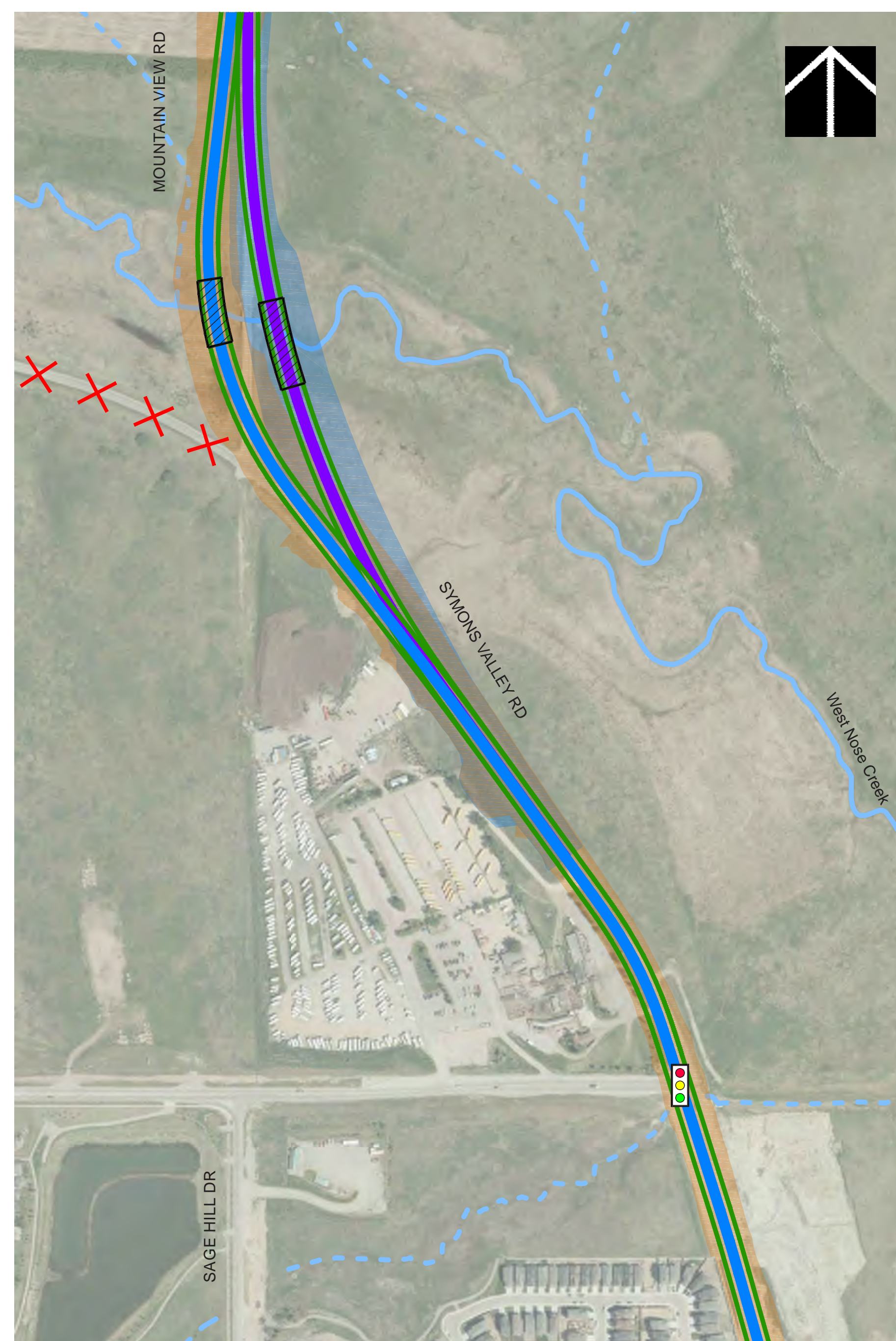
- PROPOSED PATHWAY
- OPTION A CONSTRUCTION FOOTPRINT
- OPTION B CONSTRUCTION FOOTPRINT
- OPTION C CONSTRUCTION FOOTPRINT
- WEST NOSE CREEK
- SEASONAL DRAINAGE TRIBUTARIES
- CREEK CROSSING



# Symons Valley Road options

Using what we heard from Calgarians about their priorities, along with City priorities, the project team developed four options for Symons Valley Road.

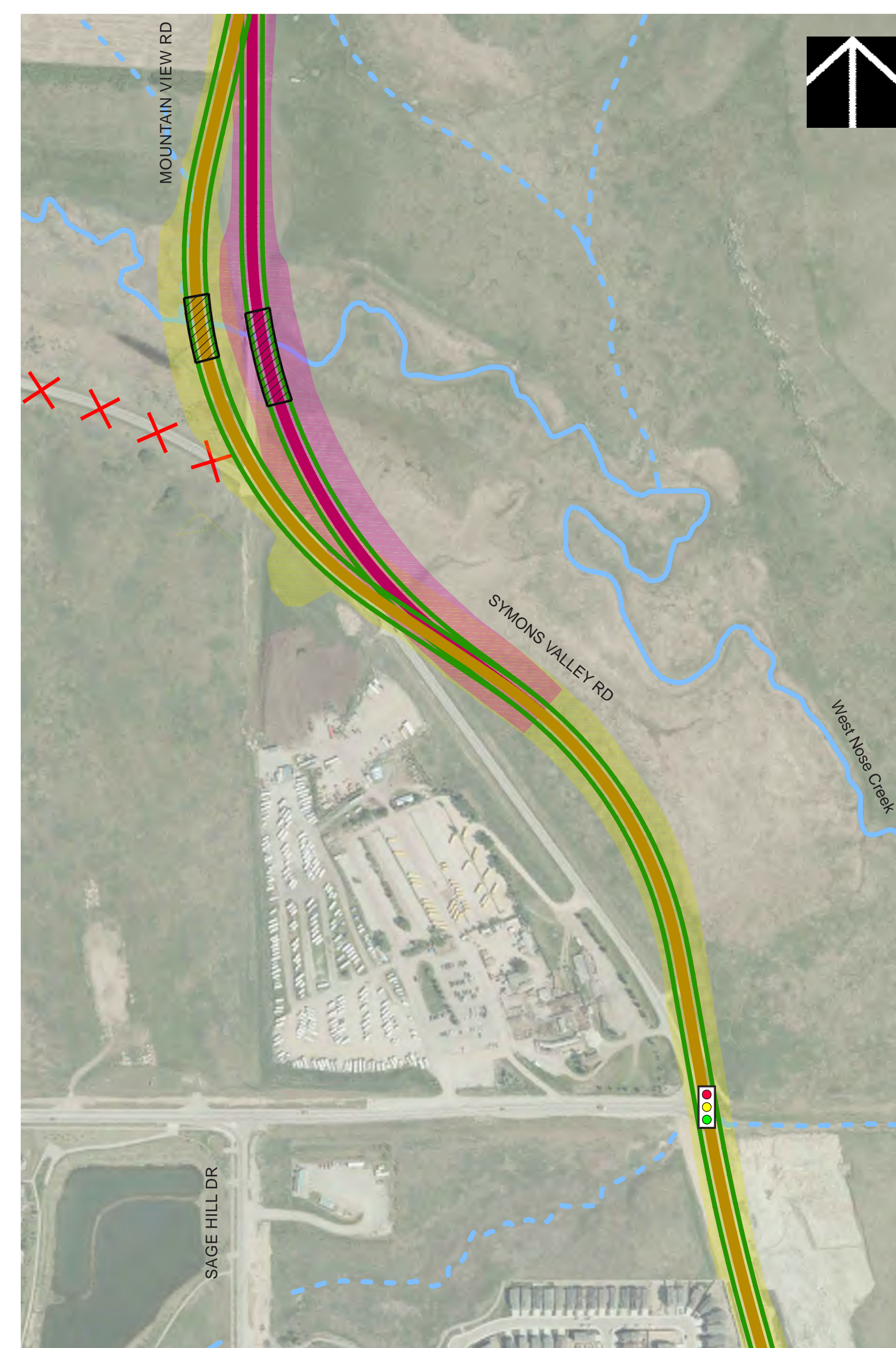
## Options A and B: Maintains Intersection Angle



- Option A:**
- Maintains alignment from Glacier Ridge Area Structure Plan
  - More impacts to West Nose Creek flood plain

- Option B: (Preferred)**
- Less property impacts
  - Less impacts to West Nose Creek flood plain
  - Potential impacts to seasonal drainage tributaries

## Options C and D: Adjusted Intersection Angle



- Option C:**
- Increased property impacts East of Symons Valley Road
  - More impacts to West Nose Creek flood plain

- Option D:**
- Increased property impacts East of Symons Valley Road
  - Less impacts to West Nose Creek flood plain
  - Potential impacts to seasonal drainage tributaries

**All options provide the following:**

- Four lanes on Symons Valley Road
- Pathways along both sides of Symons Valley Road
- Existing creek crossing will remain operational during construction

**LEGEND**

- OPTION A
- OPTION B
- PROPOSED PATHWAY
- OPTION A CONSTRUCTION FOOTPRINT
- OPTION B CONSTRUCTION FOOTPRINT
- SEASONAL DRAINAGE TRIBUTARIES

**LEGEND**

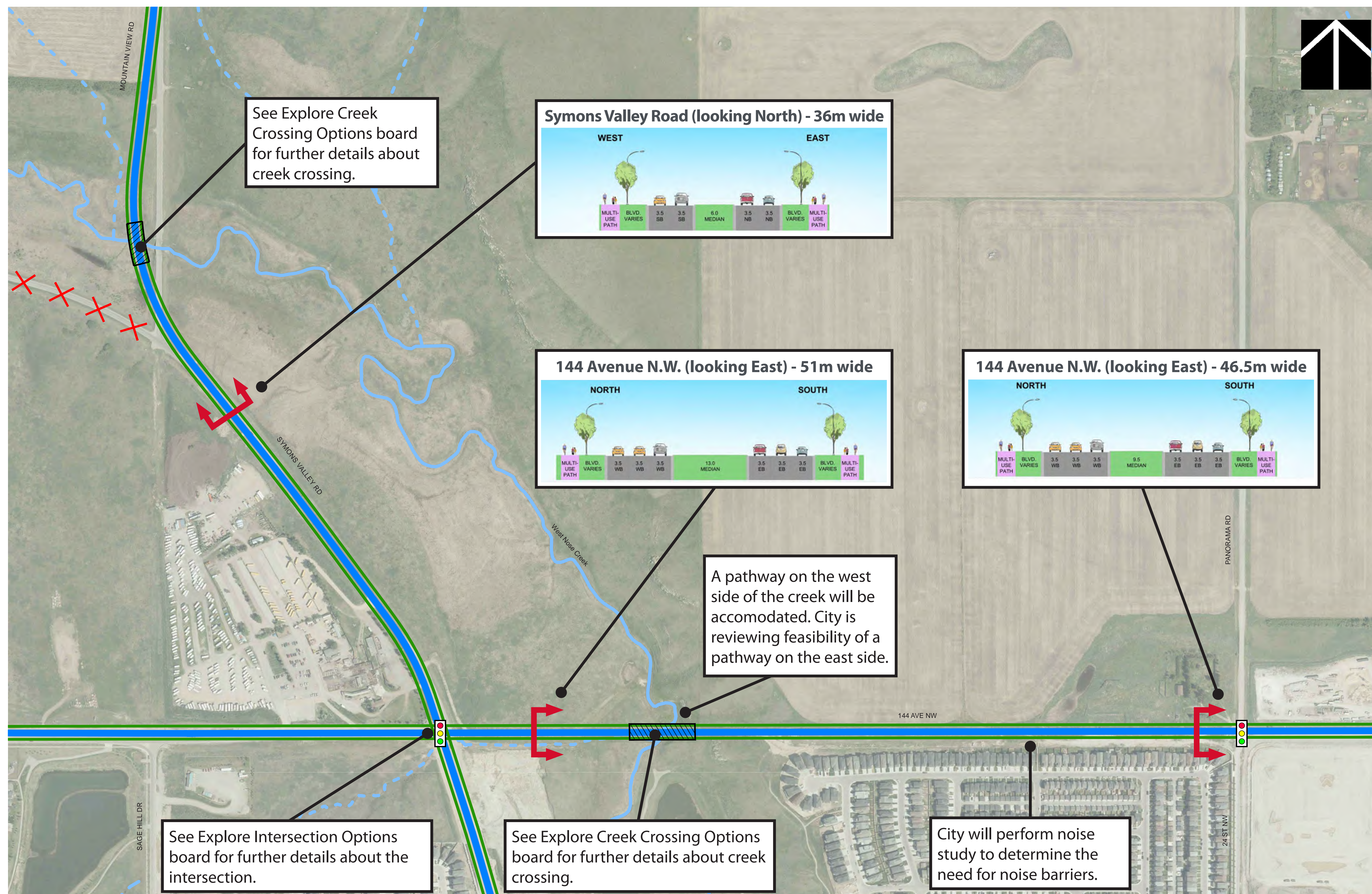
- OPTION C
- OPTION D
- PROPOSED PATHWAY
- OPTION C CONSTRUCTION FOOTPRINT
- OPTION D CONSTRUCTION FOOTPRINT
- SEASONAL DRAINAGE TRIBUTARIES

|                 | Public and City Key Priorities |                |                              |                              |                      |                              |                    |
|-----------------|--------------------------------|----------------|------------------------------|------------------------------|----------------------|------------------------------|--------------------|
|                 | Minimize Property Impacts      | Traffic Safety | Creek Alignment / Protection | Environmental Sustainability | Pathway Connectivity | Improve Vehicle Travel Times | Construction Costs |
| <b>Option A</b> | Yellow                         | Green          | Pink                         | Yellow                       | Green                | Green                        | Pink               |
| <b>Option B</b> | Green                          | Green          | Green                        | Green                        | Green                | Green                        | Green              |
| <b>Option C</b> | Pink                           | Green          | Pink                         | Green                        | Green                | Green                        | Pink               |
| <b>Option D</b> | Pink                           | Green          | Green                        | Pink                         | Green                | Green                        | Green              |

**Legend:** Green circle = ALIGNED WITH PRIORITIES, Yellow circle = SOMEWHAT ALIGNED WITH PRIORITIES, Pink circle = LESS ALIGNED WITH PRIORITIES

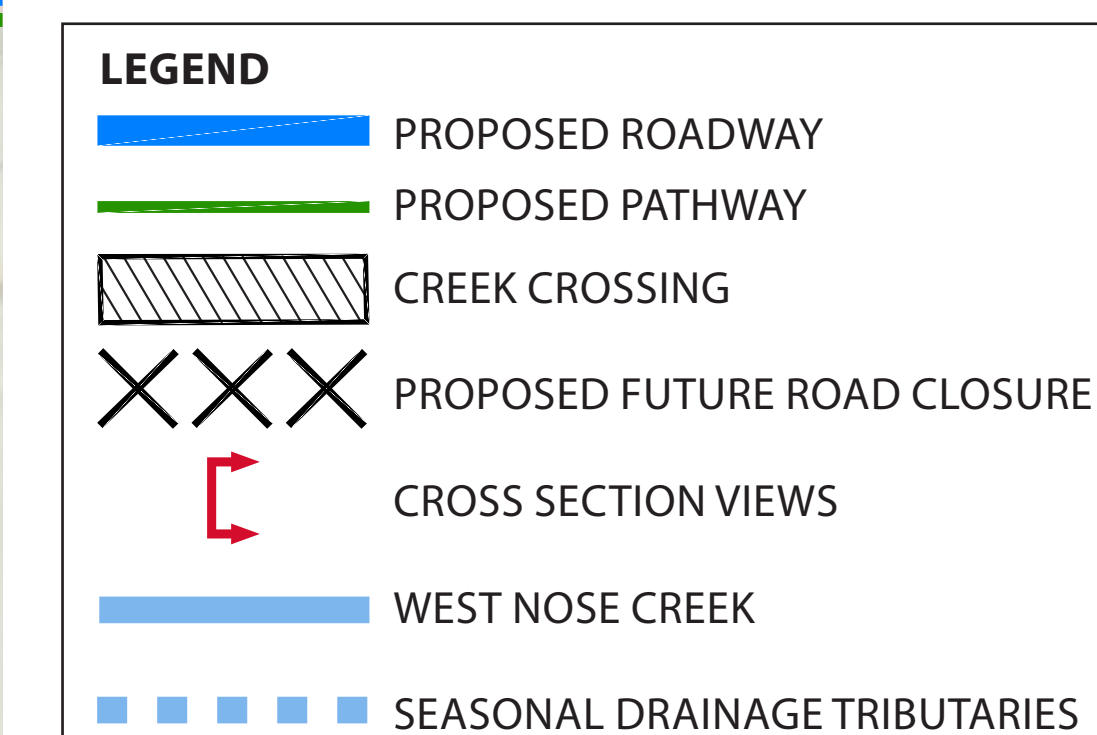


# Preferred alignments



**We will continue to explore:**





- Left and right turn options at 144 Avenue N.W. and Symons Valley Road Intersection
- Narrower road right-of-way on 144 Avenue N.W. at Symons Valley Road
- Pathway option along West Nose Creek





# Explore creek crossing options

We are exploring options for crossing West Nose Creek at 144 Avenue N.W. and at Symons Valley Road. The preferred option will optimize traffic safety, creek alignment, environmental sustainability, pathway connectivity and construction cost.

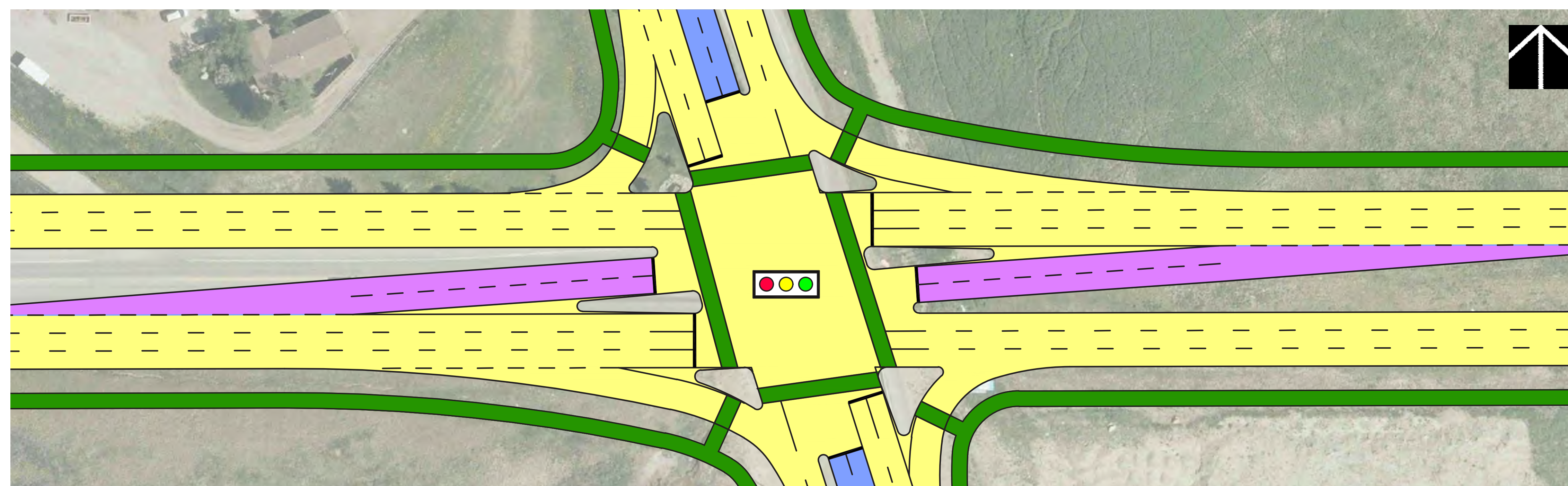
|          | 144 Avenue N.W. (looking south)   | Symons Valley Road (looking east)   |
|----------|---|---|
| Bridges  |  <ul style="list-style-type: none"> <li>• Requirement for creek realignment to be determined</li> <li>• More desirable for pedestrians along West Nose Creek</li> <li>• Flexibility for the design and potential future expansion</li> <li>• Increases construction costs</li> </ul> |  <ul style="list-style-type: none"> <li>• No changes to creek alignment</li> <li>• More desirable for pedestrians along West Nose Creek</li> <li>• Flexibility for the design and potential future expansion</li> <li>• Increases construction costs</li> </ul> |
| Culverts |  <ul style="list-style-type: none"> <li>• Requires creek realignment</li> <li>• Less desirable for pedestrians along West Nose Creek</li> <li>• Lower construction costs</li> </ul>   |  <ul style="list-style-type: none"> <li>• Minimal changes to creek alignment</li> <li>• Less desirable for pedestrians along West Nose Creek</li> <li>• Lower construction costs</li> </ul>  |



# Explore intersection options

On the preferred alignment we are exploring turning options along 144 Avenue N.W.

## Previously considered in development plans



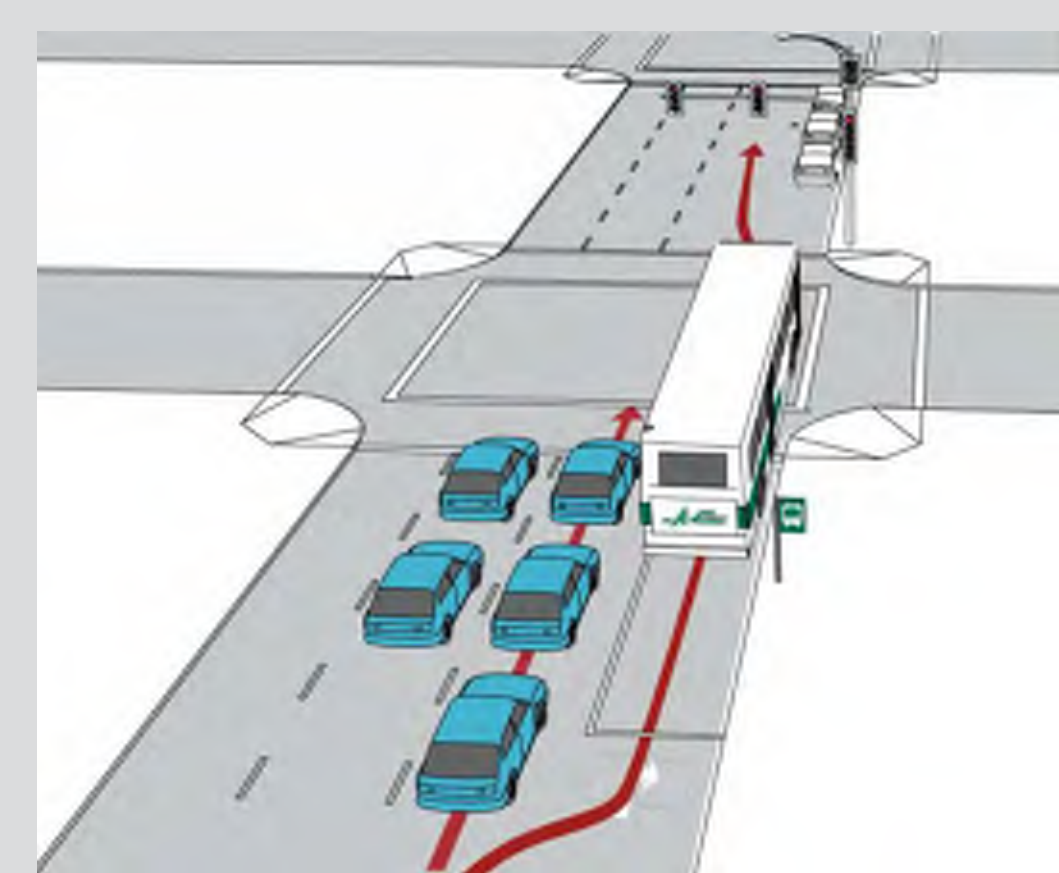
### Slotted dual left turns without queue jump lanes along 144 Avenue N.W.

Using slotted dual left turns:

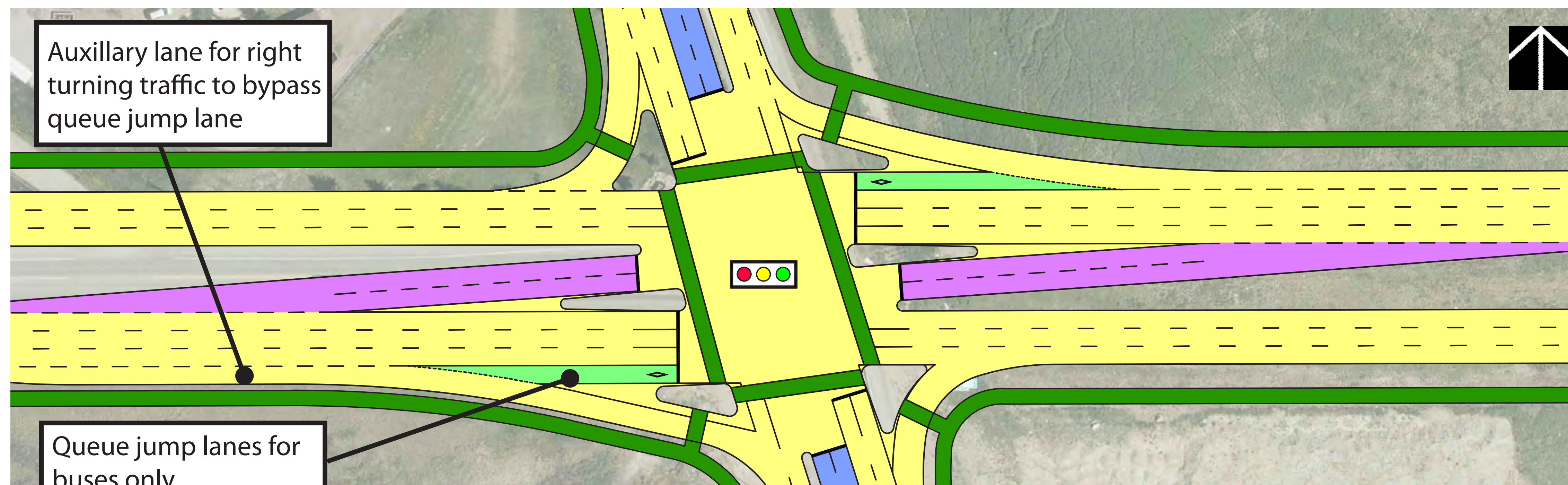
- Improves visibility for left-turning vehicles
- Increases capacity for left-turns
- Improves truck operations with better turn angles

## We are still exploring

### Example of a queue jump lane:



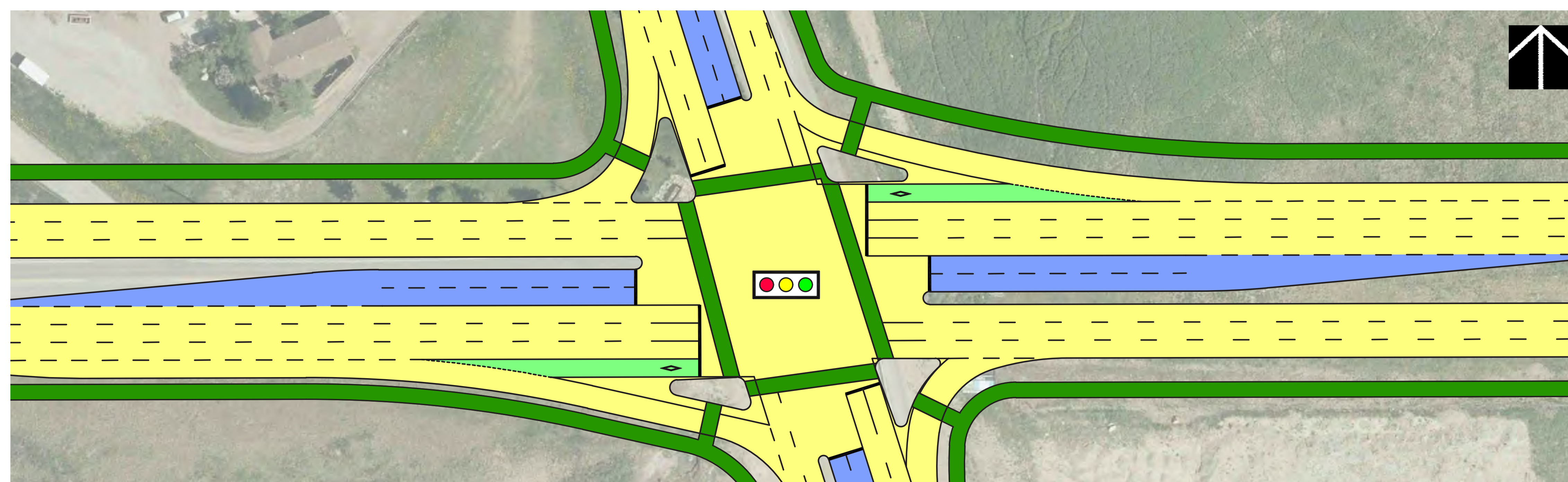
Queue jump lanes are reserved for buses at signalized intersections. Buses enter their own lane allowing them to get through intersections more quickly than if they were queuing with general traffic.



### Slotted dual left turns with queue jump lanes along 144 Avenue N.W.

Adding queue jump lanes:

- Improves transit operation along 144 Avenue N.W.
- Improves right turns onto Symons Valley Road
- Increases intersection footprint



### Parallel dual left turns with queue jump lanes along 144 Avenue N.W.

Using parallel dual left turns:

- Reduces median width to allow for queue jump lanes
- Provides safe and efficient left turns
- Commonly used City-wide at many large intersections

- Legend**
- Proposed Road
  - Proposed Pathway / Crosswalk
  - Proposed Parallel Left Turns
  - Proposed Slotted Left Turns
  - Proposed Bus Queue Jump
  - Traffic Signal



# Tell us more

Keeping the top public and City priorities in mind, provide your feedback on the concepts developed and evaluated for:

- Roadway alignments
- Creek crossings
- Intersection types

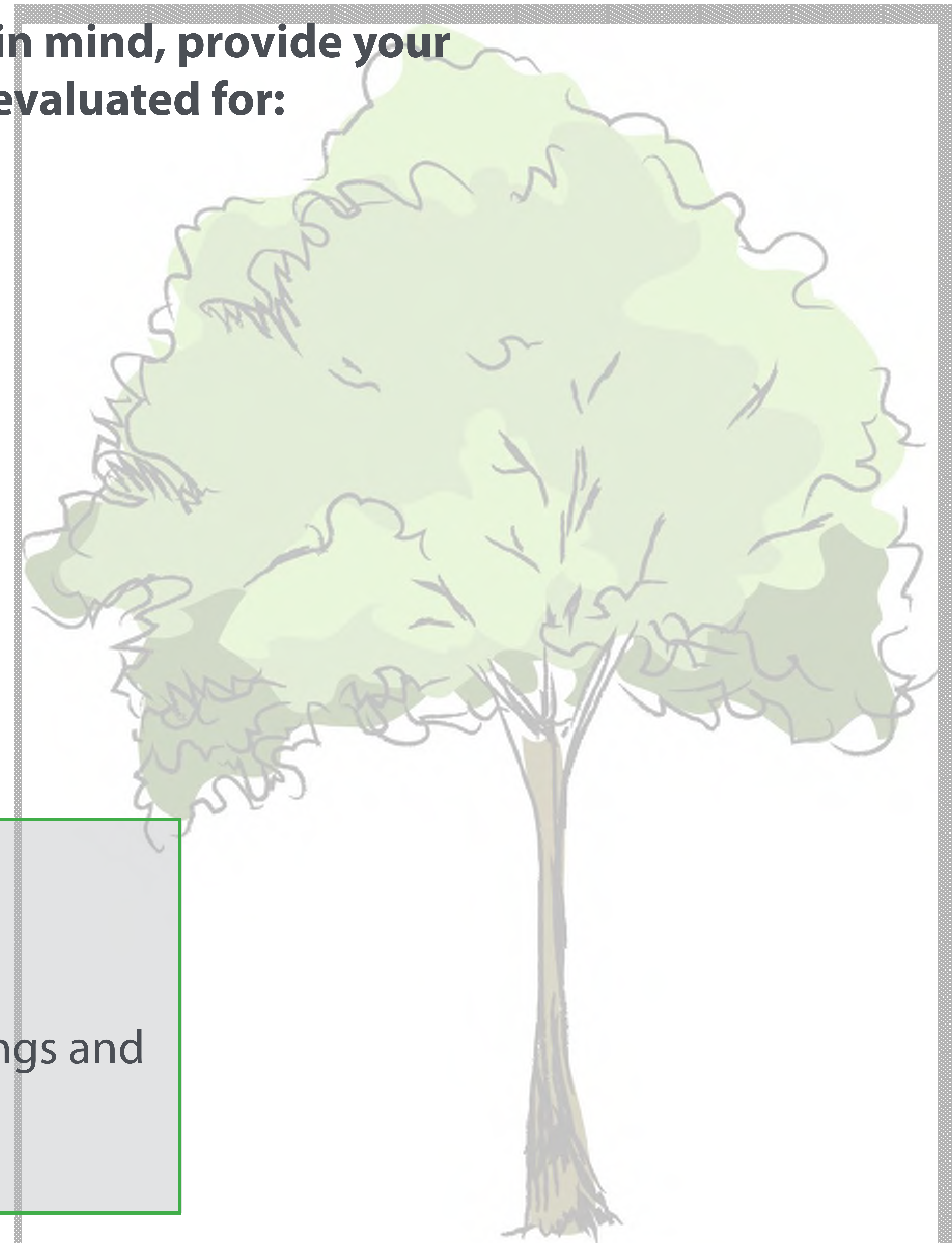
**What do you like or not like?**

**What else should we keep in mind?**

## Evaluation process

The project team will:

- Consider your feedback
- Use key priorities to evaluate creek crossings and intersection types
- Complete additional technical analysis





# Next steps



Explore Phase online survey is open until **June 26, 2019** at [calgary.ca/144AveNW](https://calgary.ca/144AveNW)

Reveal Phase to develop and present the Recommended Plan (July - November 2019)



## How will public feedback be used?

The City will prepare a What We Heard report summarizing all feedback following this, and future, public engagement sessions. Your input will help inform the design concepts, and the preferred plan for 144 Avenue N.W. study area.

For ongoing project updates, information regarding future engagement events, or to sign up for email updates, visit [calgary.ca/144AveNW](https://calgary.ca/144AveNW)

# Thank you for coming

Please take a moment to fill out a comment form or provide your feedback online. Your feedback will help us improve our future engagement events.