

Project overview

Parks will be developing a parcel of land located at 936 16 Avenue S.W. into a vibrant public park space that can be well enjoyed and used by community members. The new 908 square metre park will help fill an open space void in a neighbourhood that is considerably deficient in park space.

The City of Calgary has partnered with Ground Cubed Landscape Architects, a professional consulting firm to help develop conceptual designs based on the feedback received from public engagement. The City will then work with Ground Cubed Landscape Architects through the detail design, permitting, and build out of the urban park space.



Engagement overview

The first phase of public engagement took place in June/July 2019 through an in-person open house and online survey. The feedback received in phase one was used by the project team to identify patterns of preference for various features in the park's design and in turn helped inform two conceptual design plans.

The feedback from phase one engagement has been summarized in the [Phase One What We Heard Report](#).

Phase two of public engagement took place in September/October 2019. The project team used the feedback from phase one to develop two conceptual design plans to be shared with the public. The primary objective of phase two engagement was to gather feedback on the two conceptual design plans. The public



New Park Space in the Beltline

Stakeholder Report Back: What We Heard, What We Did

December 2019

was invited to provide feedback on what features/attributes they liked and disliked about each of the two concept plans.

An open house was held on September 25th at Grace Presbyterian Church and an [online survey](#) on The City's engagement portal was open between September 23 – October 7.

Input from both the open house (37 conversations) and online survey (187 respondents) has been used to help develop a final conceptual park design (the preferred concept).

New Park Space in the Beltline

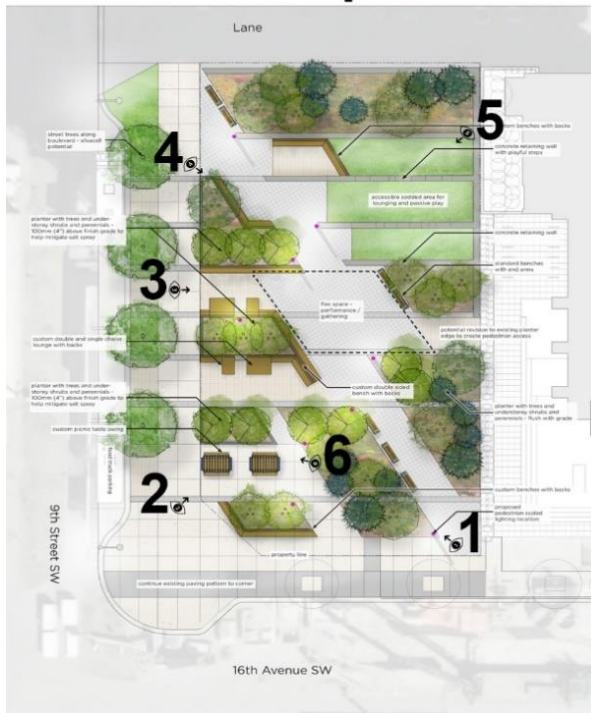
Stakeholder Report Back: What We Heard, What We Did

December 2019

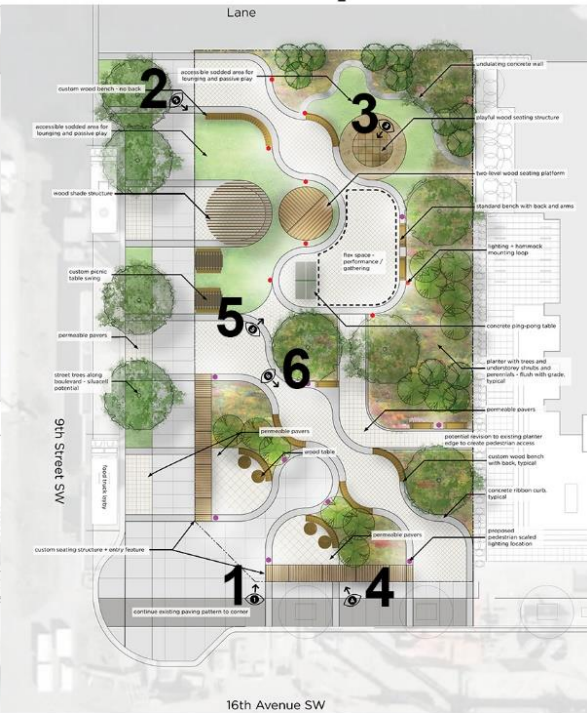
What We Asked

Engagement sought public input through structured questions about the two conceptual design plans below. Images and renderings were provided to give additional context for participants when submitting their feedback.

Concept 1



Concept 2





New Park Space in the Beltline

Stakeholder Report Back: What We Heard, What We Did

December 2019

We asked one demographic question to see if we were speaking to community members who would be using the new park space. We also asked one general question surrounding how participants heard about the project.

1. Where do you live? (Select one)
 - I live or work right next to or across from the space
 - I live in the Beltline
 - I live in an adjacent neighborhood
 - I do not live close to the site

2. How did you hear about this project? (Check all that apply)
 - Received a post card in the mail
 - Saw a bold sign
 - Saw the sign posted at the park location (936 16 Ave SW)
 - Facebook advertisement
 - Other social media
 - Word of mouth
 - Other (please specify)

3. What do you like about Concept # 1 found above?

4. What do you not like about Concept # 1 found above?

5. What do you like about Concept # 2 found above?

6. What do you not like about Concept # 2 found above?

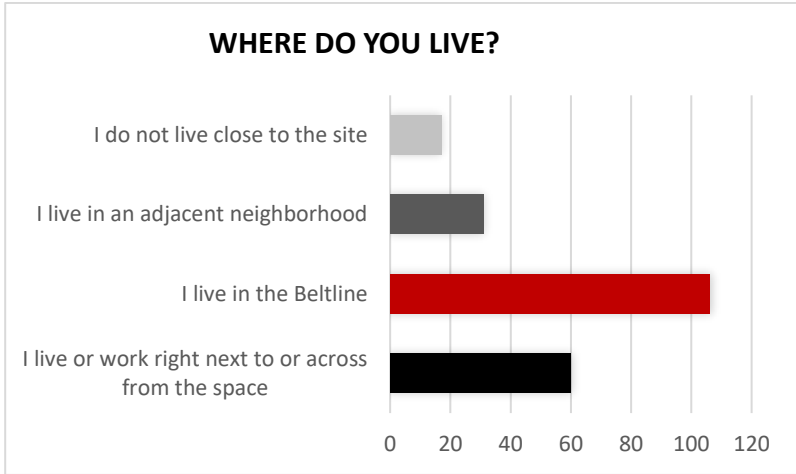


New Park Space in the Beltline

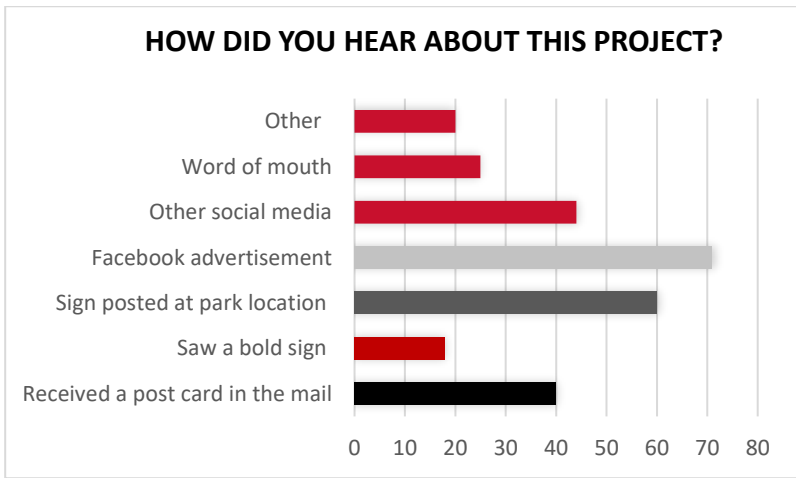
Stakeholder Report Back: What We Heard, What We Did
December 2019

What we heard

Q1: Where do you live?



Q2: How did you hear about this project?





New Park Space in the Beltline

Stakeholder Report Back: What We Heard, What We Did

December 2019

Summary of feedback from Concept #1

Q3: What do you like about Concept # 1 found above?

Q4: What do you not like about Concept # 1 found above?

The following themes were expressed for design concept # 1. Themes are listed in order from most commonly mentioned to least commonly mentioned.

Concept #1	
Supportive Themes	Critical Themes
<p>Park layout The public generally liked the open layout and the hardscape walkway running SE/NW through the park.</p> <p>Clear sightlines into and out of the park space were a crucial component in this concept and was an idea that was supported heavily by the public.</p> <p>Seating options The public liked the variety of seating options, and the segmented nature of the design which allows for smaller gatherings.</p> <p>Softscape materials The public seemed to prefer a lush green space, with shade trees, understory plantings and colour.</p> <p>Accessibility & Safety The public were supportive of how universally accessible the site feels.</p> <p>Clear site lines through the park makes the park feel safe.</p> <p>Site Amenities The food truck idea is encouraged.</p>	<p>Seating options The public would like to see tables added to the design and ensure that the benches have arms to limit lounging.</p> <p>Consider seating that has an overhead cover.</p> <p>Playful elements The public thought that there weren't enough playful elements incorporated into the design.</p>



New Park Space in the Beltline

Stakeholder Report Back: What We Heard, What We Did

December 2019

Summary of feedback from Concept #2

Q5: What do you like about Concept # 2 found above?

Q6: What do you not like about Concept # 2 found above?

The following themes were expressed for design concept # 2. Themes are listed in order from most commonly mentioned to least commonly mentioned.

Concept #2	
Supportive Themes	Critical Themes
<p>Park layout The public enjoyed the organic and curved nature of the park layout. The curving aspects are a good counter balance to the geometry of downtown.</p> <p>Seating options The public seemed supportive of the variety of seating options</p> <p>Playful elements The public enjoyed the ping pong table and the hammock posts, the playful elements in the park were supported.</p> <p>Site Amenities The food truck idea is encouraged.</p>	<p>Park layout Too many different components that crowd the space.</p> <p>Softscape materials Park site needs more lush green space, with shade trees, and understory plantings.</p> <p>Playful elements The public liked the playful nature of the design but wanted to ensure that comfort was also considered in the design.</p> <p>Accessibility & Safety The public thought that the sightlines should be more open for safety reasons.</p>

* For a verbatim listing of all the input that was provided, please see the [Verbatim Comments](#) section.

What we did



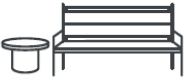

The City has reviewed all of the feedback provided and worked with our design consultants to generate a preferred concept design (see on following page). We feel that this concept accurately reflects the desires of the community from what we've heard through the public engagement process and aligns well with The City's and community's goals for the space.

Preferred Concept



* Please note that as we take the preferred concept through the detail design and permitting process, there may be minor changes to ensure that the design aligns with The City’s planning policies. The final design will take into consideration the feedback that we have obtained to date from public engagement and balance that with City planning policies, bylaws, and priorities. Above, you will find the preferred concept which is the most up to date vision for the future park space.

Design Rational

Park Elements	City Response
 <p>Softscape areas (types of grasses & plantings)</p>	<p>A variety of plant material has been incorporated into the preferred concept with a mixture of shade trees and understory plantings of all sizes. Manicured grass areas have also been dispersed throughout the park space with curving edges that act as a counter balance to the rectilinear geometry of the park’s urban surroundings. Tree placement has been specifically selected to ensure that sightlines into and out of the site are maintained to address safety concerns from the public.</p>
 <p>Hardscape areas (types of hard surfaces)</p>	<p>The hardscape pathway cutting through from the 16th Avenue S.W. edge of the site to the sidewalk along 9th Street S.W. was included in the preferred concept to help provide a safe and accessible walkway for pedestrian movement throughout the site. A mix of hardscape materials (permeable pavers and pavers) will be used on site to provide a variety of hard surfacing. The concrete ribbon curb has also helped to add a curvilinear feel throughout the park while allowing us to define segmented areas such as the flex space for performance and gathering.</p>
 <p>Site furnishings (types of seating)</p>	<p>Simply put, a variety of seating options have been included throughout the park space to cater to individuals, as well as both small and large groups. Moveable seating will allow park users to adapt their sitting situation however they may feel which has proven to be successful in other parks in Calgary. The custom circular bench/entry element in Concept # 2 was a contentious item – both in its design and location. Some people felt that it created a welcoming gateway into the site; while others felt that it may harbour antisocial behaviour, create a barrier to the site, and be a potential safety hazard for children. The preferred concept incorporates the idea of a circular custom bench in a less enclosed way. The seating is now more open and facing the flex space, but still allows for intimate social gatherings with arm separations and an overhead structure. The design of the overhead structure will be cantilevered and louvered to lighten the feel of the structure.</p>
 <p>Creative elements</p>	<p>The preferred concept maintains a lot of the original playful elements (swinging picnic table, ping pong table, circular seating/stage area), but organizes the space in a less compartmentalized way. The circular seating/stage area is now incorporated into a large curved seating area and is directly engaged in the flex space. The creative elements blend into the park space in an appropriate manner.</p>



New Park Space in the Beltline

Stakeholder Report Back: What We Heard, What We Did

December 2019

How we got here & key project considerations

Prior to collecting input during the project's engagement process, The City developed a list of items that were not open for feedback. Many of these rules and requirements are based on feasibility, City initiatives and land use control requirements for the parcel of land. These rules and requirements can be seen below:

- At least 50% of the park must be soft surface landscaped area (sodded area(s), planting beds, etc.);
- The park space will have no fencing;
- There will be no off-leash component in the park space;
- No motor vehicle parking stalls provided on park parcel;
- There will be no water feature incorporated into the park design; and,
- There will be no playground or sports field incorporated into the park design.

The City then worked with Ground Cubed Landscape Architects to undertake a site inventory and analysis. This helped to develop a list of opportunities and constraints for the site to establish how best to make use of the space. All of the above was balanced with input, preference, and feedback from the public to eventually develop the preferred concept.

Next steps

- **Winter - Spring 2019** – Design, Permitting, & Tendering: The preferred concept will be taken through detail design, review, and permitting. Once finalized the project will be procured to retain a contractor who will be responsible for constructing the new park space.
- **Summer 2020** – Construction of park: The park will be constructed by the successful proponent. It is estimated that construction of the new park space will take approximately five (5) months to complete.
- **Fall 2020** – Target park opening: Following construction completion, the park will be open for use by the public.



New Park Space in the Beltline

Stakeholder Report Back: What We Heard, What We Did

December 2019

Verbatim Comments

All of the comments below are verbatim as received. The comments are divided into questions asked. They are unedited, including spelling, grammar, etc. Use the links below to quickly navigate to each specific question.

[Question 3 – What do you like about Concept # 1 found above?](#)

[Question 4 – What do you not like about Concept # 1 found above?](#)

[Question 5 – What do you like about Concept # 2 found above?](#)

[Question 6 – What do you not like about Concept # 2 found above?](#)

Q3: What do you like about Concept # 1 found above?

- Not much. It feels too urban with not enough green area.
- I like the shapes and routes through the park, I also like the chaise lounges
- Trees, greenery in the downtown is lacking it's just cement and pavement
- Clear sightlines
- Nothing
- I like the tiered grass and concrete retaining wall steps. The picnic bench swings in both concepts are great. I like the chaise lounge idea as well.
- I like the overall design; I think it would fit well within the neighbourhood; I like that smaller spaces are defined within the overall park; I like that it has space for different user groups to use the space at the same time
- The gardens and amount of trees
- More seating with backs, more friendly design
- Picnic table swing is awesome
- Straight clean lines
- love the entertainment space.
- The range of seating options, lots of grass space
- Lots of seating in various shapes
- The variety of seating types, consolidated green area.
- Custom picnic table swing
- The soulless grid layout is a wonderfully artistic metaphor for Beltline living in general. That's the most positive thing I can say about this concept.
- Spacious
- It's simple but has modern lines.
- Lots of private seating areas.
- Grass/wall for seating
- Got amount of trees and shrubbery
- It seems to be in keeping with the contemporary design of the adjacent new tower.
- I like the clear line of sight and direct path
- The picnic tables and greenery
- Minimalistic and open
- Better design, no round things.



New Park Space in the Beltline

Stakeholder Report Back: What We Heard, What We Did

December 2019

- Seems to have more green areas
- The diagonal, as people always cut through parks, so it just makes sense.
- Well programmed space with tons of seating options
- Lots of trees!
- Nothing, concept 2 is better in every way
- i do not like concept 1 in general
- appears to have larger trees
- Different areas for people
- The custom picnic table swing.
- The layout is so aesthetic, I love how the space places more plants over concrete spaces.
- I love the greenery and the benches. This looks very modern and welcoming
- Multi generational - trees and sof landscaping
- I really love #5 the grass area with the steps
- Sharp lines, good sightlines
- like the southwest facing seating
- I like the accessible sodded area that plays with different grades/levels. I like the custom chaise chairs and custom wooden benches.
- It's pretty. Nice green space.
- Simple, clean, Inviting.
- Lots of seating, better than current space
- the trees
- very segmented.. will be easy to find an open spot.
- Picnic table swing and grassy lounging areas.
- Love it... I love the cooridoor that runs NW to SE. Love the clean lines. and love the informal sodded lounging area.
- open
- Openness
- clean and efficient design
- I like the curvilinear look of it. Feels more natural and inviting.
- the linear design of pathways, swinging picnic tables
- orientation with desire lines make sense
- I like the concept - keep the damn dogs out of the park.
- The geometric nature of the design and how it ties in with the appearance of 930 16th Ave SW.
- The passive approach to the park. Has a clear pedestrian desire line across the park. Appropriately sized grass space. Wider sidewalk on 16 Ave. The location of a potential connection to the adjacent building.
- Nice juxtaposition of cut-outs along the diagonal gesture
- Comprehensive, easy to navigate
- The flex space location and grass location
- Abundance of greenery and seating
- open sight lines, welcoming to walk through garden areas
- Less places for homeless and drug addicts to live and use.
- Greenery and flexible lounging spaces
- Love the space! Great use of space near 17th
- simple, streamline
- More visibility of surrounding areas within the park, making it safer.



New Park Space in the Beltline

Stakeholder Report Back: What We Heard, What We Did

December 2019

- I prefer the benches in Concept 1 because they remind me of the benches near the Peace Bridge. It's better for sitting near strangers.
- The picnic table swings look interesting
- Not a whole lot
- Nicer expanse of grassy areas for kids to play
- the large open areas, and the flexible spaces. I like all of the places to sit and socialize - a good variety of opportunities.
- Seems like more seating areas
- The picnic tables seem fun.
- Benches, grass space
- The vegetation
- flowers, grass, benches, trees, walkways
- looks good
- Not much but option 2 looks better to me
- Clean lines, accessible, usable passive space
- It looks modern and open
- Consideration to durability, lighting, lots of green.
- It looks the more wheelchair-friendly of the two.
- I enjoy the grassy area of visual 5
- The picnic table
- It looks very inviting, the flex/grass area, and seating is laid out well. Overall it looks like a space where you can be with neighbors but also come find a spot alone to read.
- Looks nice, but kinda boring
- I love it
- Appears more harmonious and calming, especially the green space with concrete retaining wall seems inviting to relax.
- There are trees! Too many of the small parks don't have any tree cover, which makes them unusable in the summer heat.
- Yes. It is simple but applicable.
- The clear diagonal path makes easier to just walk across it, without disturbing people actually using the park.
- Clean, neat I like the green space for lounging. Maybe you could put the ping pong table in this one?
- Different seating options
- Picnic tables. Shrubbery
- Clean lines
- I like the variety of seating options. Main walkway through park doubles as a corner cutting path, which might encourage more foot traffic.
- The trees
- Easy access to park from multiple entrances
- Plants, green space
- The space feels more open, light filled and airy
- The variety of elements used
- More green space provided in an urban setting, which is becoming increasingly dense
- The Playful steps
- open concept with few potential "hiding" spots for illegal activities
- straight line make it efficient when in a hurry to get through the park and seating with backs are great
- Rectilinear form, Direct paths to cut through park.



New Park Space in the Beltline

Stakeholder Report Back: What We Heard, What We Did

December 2019

- Streamlined, simple use of green space. Easier to pass through in a crowd, likely
- Love the picnic swings
- I like the angular design, and the multiple direct paths through the park.
- Amount of trees
- More greenery and less inviting for vandalism, skateboards misusing design and homeless shelters.
- The tree layout
- Its linear nature. I like how permeable it is and can imagine it constituting a pleasant shortcut.
- The sightlines , I can see all the park from all areas. Safety
- More greenery
- The simplicity
- Basically nothing
- Modern feel
- Clean, direct pathways but still walk through activities in the park. Lots of areas to sit and enjoy the park.
- All of the tree and plants.
- Picnic tables
- Easier to travel straight through.
- Open spaces, natural features
- Nothing
- Looks nice.
- Seems highly functional as a park with enough green space to feel as if you are at a park
- I like the many benches and design with limited overhead coverings.
- Don't like it
- I like the inclusion of the picnic table swings, this is an interesting, unique feature that would attract people to the park.
- I enjoy the number of seats with backs and all the green space
- The Flex space as well as all the seating available
- Open space, wide view of greenery
- Not much
- Seating areas are nice
- A good amount of sodded area; seats with backs
- look clean and tidy
- It's very clean and crisp. Sharp edges.
- I prefer this one it seems to have more sensible seating.
- The picnic table swings
- How clean it looks.
- Open green space, seating
- More traditional look of a park with some useful amenities like tables and seat edges. The geometry of planting beds is a nice aesthetic.
- I don't love it.
- Simple
- The geometric clean cut pattern
- The built in seating and lounge areas
- The greenery
- Good sight lines, easy to navigate, good use of open spaces to allow for multi use
- I like the benches and the flex space in the middle.
- Lots of seating

- Section 5 with the accessible sodded area is amazing
- the trees , shrubs, and perennials
- The flowers in the planters are nice.
- simple, looks good
- It seems most practical, very welcoming
- None
- Simple
- Simpler design, easier upkeep, appears to be more private seating areas
- Nice flow for walking - nice benches - good mix of concrete and wood with vegetation - not sure what the coloured structure is in image 6 but possibly for playfulness. Fits very well with the structure of The Royal. Like the tall light fixture.
- The amount of green space
- Lots of open space and visually appealing design
- Lots of seating
- The free space to relax and lounge to enjoy the weather. The park has a really nice flow through it as well.
- the modern design of the benches and the choice of foliage.
- The seating areas
- Good sightlines. Straight lines mean it will be walked through lots.
- The direct path through the park.
- Scheme honours the strongest "desire line" to walk through the park. Also gives some structure to the two distinct passive areas (hill at NE, picnic/seating to SW) . I also like features like the hill and its 'playful steps', lounge, swing table.
- Clean, modern, simple. Easy to navigate and access.
- Concrete block play. Reminds me of pompidou
- Food Trucks!!
- Like the feel of image # 4
- Flex space for music
- Benches with backs
- swings
- like raised wall along N. side
- benches with high backs that are inter-rated with planters
- Like the concrete wall in grass
- Like the lounge seating
- Picnic table. Gathering ppl to stay longer
- like double sided bench w backs - creates separate spaces
- Likes the seating style
- Love the hanging benches
- Wooden benches have an appealing level of warmth
- The diagonality is very pleasing.
- I like the space for food trucks
- Playful steps
- I like the playful furniture
- I like the flooring
- I like the food truck parking area
- I like the amount of trees (but feel free to plant more)
- Love the swing benches



- like balance of space within the design. Easy access
- raised planters
- Like concept 1
- like the variety of plants & flowers & natural grass would discourage loitering (maybe)

Q4: What do you not like about Concept # 1 found above?

- All of it.
- I would like more trees
- loungers
- Not a lot of interactive area for young children need a place for them to climb on
- Could be funkier. This is the Beltline after all.
- Boring; common layout you see at your everyday normal parks
- I don't not like any particular aspect of it - it is just kind of bland: straight, sharp corners, etc.
- Very angular - not much personality
- I think the lawn area would be more useful if it were all on the same grade.
- Its basic
- Not much
- Don't like the layout as much as the first one
- Looks like less green space
- A little basic, very straight forward
- It doesn't seem very exciting visually
- Too much going on... noisy
- custom bench swings. i don't think they will be robust enough for the public use, stepped concrete in grass may be a tripping hazard.
- Broken up
- Sharp angles
- the "playful steps" look like an inevitable tripping hazard. Limited "curb appeal" overall. Seems like a '60s idealised university lawn, optimised for spring study sessions - not a year round residential park.
- Too simple
- A few additional tables so that people can enjoy coffees or lunch.
- With that lots of seating, comes more CPS patrol requirements.
- Straight lines provide too much unviewable space from street - potential to have people hide/sleep within.
- The layout looks a bit too uniform with lots of straight lines
- Not very many street trees to shade people as they walk by. Yes, I see the two grey circles. Just two?
- nothing, it's fine
- Less interesting than concept 2
- Grassed areas (5) will be damaged by dog owners - City signs for fines in nearby parks shows its an issue. Too much concrete/brick (3). No shaded sitting areas throughout. Condo building not sufficiently screened with trees to create separation (5).
- Not enough green space
- Very traditional concept
- The green space will just be used by dog owners. The dog park is not far. Also the green space faces the new condo building, not ideal for everyone.



New Park Space in the Beltline

Stakeholder Report Back: What We Heard, What We Did

December 2019

- Flex space/performance area lacking a focal point- could a stage-like structure be incorporated?
- Looks alright to me, though concept 2 looks more fun.
- The fact that it exists and it may be made over concept 2
- everything
- appears to be a lack of flow, or central / focal point. seems disjointed . it has seating- all this does is attract drug addicts and homeless people looking for a place to sleep.
- Plain
- Not enough grass, lots of dogs in the area
- It's too plain. Seems boring and I don't think many people would use the space.
- The furniture is boring and really generic. Concept 2 has more dynamic and exciting furniture options. Not enough green spaces with trees and wildgrasses
- Nothing
- Too much hard landscaping - insufficient lighting - no security cameras
- The design is very traditional. With Tomkins Park a block away it's more of the same.
- Stoked very similiar to most urban parks
- it should be skateboard friendly
- The flex space/performance space doesn't really have a concept at all. There should be weather protection and electrical plug-ins for speakers and equipment if that is the plan for this space.
- The angles seem a little harsh.
- no fountain/water feature
- Doesn't look like it'd encourage starting, looks more like a pass through
- too straight and too boring
- straight shot through the park for boarders/bicycles/scooters it'll create a speed /pedestrian traffic problem.
- To me, it feels as though the park is oriented toward the condo building. Also, the design could be more playful.
- not too much...
- not that interesting
- Too symmetrical and boxy
- I do not like how angular everything is.
- generic and perhaps uninteresting
- Big circles are kind of silly.
- It is less programmed than concept 2
- seems like less seating
- Don't mind it at all - I'll like it less if you allow dogs to run wild here.
- The flow through the park. The path through the park would seem to be used to cut through the park versus experiencing the park.
- The view of the SW corner is bland and should be more notable, either with a playful or art element. There is opportunity for a little more fun or art in the park. The light fixture.
- Diagonal gesture approach is starting to get a bit played out/overused in my opinion
- A bit repetitive and restricts movement
- Pretty basic not much pop pop
- Crowded
- add a bit more garden area
- Looks very much like a thoroughfare
- Too box like...prefer some curves. Would like to ensure Park contains good lighting at night and enough garbage/recycling receptacles.



New Park Space in the Beltline

Stakeholder Report Back: What We Heard, What We Did

December 2019

- not very much lounge/play area, more just a passageway
- Need dividers on benches (similar to Barb Scott Park) to keep people from sleeping on them. More trees rather than shrubs, again creating more visibility when walking through the park. Garbage less likely to pile up with a top heavy tree.
- I don't love the concrete retaining wall around the grass.
- It's kind of boring and similar to other linear parks.
- Lots of obstructed views, picnic tables for loitering and drug use
- Too linear. With the straight shot pathway, I worry about cyclists, scooter riders, or skateboarders barreling through the park at high speeds.
- for such a small space, there is too much packed into it. Also, one of the main users will be the residents of The Royal and the design turns its back to the condo.
- Too much concrete
- needs more green
- It is nice, but lacks some of the playful elements of Concept #2
- no covered areas for shade/rain, bikes should not be allowed, should have something for children(not alot)
- Those 'custom' wood benches should be avoided because they will rot away in Calgary harsh climate. The park at the former lawn bowling club made extensive use of wood which is already rotting after 1 year
- The grass section seems like it would be under utilized. Tables in that area would be nice
- Cold, Predictable, similar to other parks, unrecognizable
- No complaints
- It's fine, but feels very traditional/boring. There's not really anything special about it.
- It's pretty standard and similar to other park spaces here.
- Permeable pavers is necessary and I did not see that in the diagram. I really hope native plants are planted in these areas as well
- The layout
- The only table seating option is the table with swings.
- Lacking anything that sets it apart from any other park
- Nothing
- The extremely bright paving stone, it appears very busy for such a small space.
- Paved walkways aren't usable as communal areas. Calgary is already littered with unused public spaces with tons of concrete and benches. More greenery! Even in the mockups, people are mostly just passing through this space.
- N/A
- All seating is uncovered, therefore not useful for sunny winter days as they'll be covered with snow.
- The area with the retaining wall "steps". Not sure what this area would be used for.
- Straight walkway
- Too regular
- It feels fairly generic - nothing jumps out to me as a unique park design.
- It's a little bland.
- It's too easy to cut through the park, which turns it in to an enhanced sidewalk rather than a passive park.
- Fairly basic design
- Custom wood seating is too custom to be replaced easily and wood does not wear well in Calgary
- The swing picnic tables aren't practical
- No reflection of traditional land it is on



New Park Space in the Beltline

Stakeholder Report Back: What We Heard, What We Did

December 2019

- Nothing that I can identify in particular
- na
- This park seems to exist everywhere nothing very fun or interesting sadly. Picnic table swings are of no interest. Both options have boring paving/tiles with little colour.
- Boring viewscape! Harsh angular layout with limited upward dimension is not particularly interesting
- Sod
- It feels unoriginal. It's mostly a park to cut through, less-so to spend some time inside of.
- A little unimaginative and conventional
- The grassy area could be larger and I dislike the "playful steps" on the concrete retaining wall. They seem unnecessary and they look a bit silly.
- Not sure about the custom picnic table swing.
- Needs to be bigger
- There is no covered structure.
- Fairly ordinary looking space
- It's not that exciting or interesting
- The complete illegibility of the words on it, is this the highest resolution image you have?
- The blue and green framed seating in picture 2 and 6.
- Too straight edged.
- It seems a little more boring and plain when compared to Concept #2
- The seating arrangements
- Too modern, "business"-like
- Less innovative
- The odd cut and edges makes it seem it have less visibility which is important in the beltline
- The main activities appear to be sitting and cutting through. There is nothing iconic, nor anything that has any movement, nor colour, nor potential for play. There should be something specifically Instagrammable.
- Very plain, lots of concrete, not enough grass.
- I worry if there are too many benches then the park will attract homeless people.
- I do not like the swings.
- The more linear path, while enabling easier cut-across, does not support lingering the same way as option 2.
- Other than the swings, it is another generic urban park of planters and benches, we need more engaging parks that people want to actually spend time in.
- I like the concept of the picnic tables, especially since there are many food places near by, just not in love with the design (canopy) style.
- It does not feel natural, too many harsh lines
- No focal point. People are more inclined to sit or appreciate a space with attractive view
- The benches are of a horrible design
- not enough green space - too much stone/walkways
- Nothing, I love it
- looks like it could get quite busy
- It's a very straight path through the middle, kind of disruptive
- Feels more closed off and less welcoming. Feels more secluded at night.
- Nothing
- Too much paved area, want permeable paving or more grass for improved environmental impact
- Too many small planter beds and gathering spaces. Look at Enoch Park - there's the same idea and it doesn't work. This is missing a strong edge that creates a memorable interior space.



New Park Space in the Beltline

Stakeholder Report Back: What We Heard, What We Did

December 2019

- Too straight forward, I bit boring
- Too much concrete
- It seems very closed off-especially around area 6
- Nothing
- Boring
- Looks like a shopping mall and that's not what I want in a park
- Not very unique, looks the same as many outdoor spaces in Calgary.
- Very sharp and separated
- The tacky green metal trim; it needs more greenery, less concrete
- the custom picnic table swing
- Not a big fan of the picnic tables concept. Not sure what the idea is - is the idea that they are covered? Confusing idea. Why not have a system where people can place umbrellas in a slot if they want? Please provide for solo outdoor dining.
- You should scrap a typical park and put up a splash pad! It would create such an amazing community draw.
- I don't like the flow
- Lack of design
- Bit boring
- doesn't flow as well as the second concept
- Nothing
- Too plain, and too segregated
- It's too simple of a park, nothing unique about it
- not enough grassy space
- It's all squares. The whole downtown and structure of the city is either a square or a rectangle. The shape doesn't remind of a park but a park in your condo
- It looks like it's designed to try and make sure people can't hide in it.
- May be too strongly recti-linear. Even the benches and planters lend this. Not a fan of elevated planters unless they are done with some architectural style. Might attract skateboards.
- benches should have arms - not hostile just sensible
- chain swings may be vandalized easily. Don't like
- no manicured grass - urban campers
- more green
- want sodded areas for lounging (SW side)
- Playful steps: uncomfortable to sit on. Difficult to mow and trim for Parks staff
- want short wrought iron fence along W & S side
- Move grass area to more visible area
- Concrete stepped retaining wall - dangerous edges for children to get injured
- maybe add bike parking
- lacks water fountains. Need more grass areas
- can't look like it belongs to the building
- Too much concrete
- Tight configuration. Possibly too much hardscape small site
- I don't like the lack of water fountains for humans and dogs
- Too much concrete but I think this is going to be addressed
- Picnic table with swings should have a roof for protection from sun and rain
- ashtrays needed to deter littering
- need ashtrays and garbage cans



- not enough grass
- how are dogs going to be handled?
- Maybe benches should have spaced arm rests so that you cannot lie down
- too busy for such a small park
- major seating zone SE corner. Family area
- want scooter piles and bike rack
- no evergreen trees in inner city
- concrete hard on feet. Rubber?
- Somewhere to walk like Barb Scott Park
- Want gravel area - dog poo zone near grass area - bag dispenser
- swing benches look flimsy. Like the idea, but not this design

Q5: What do you like about Concept # 2 found above?

- I enjoy this more, it feels modern and open. I like the use of woods and more organic pathways.
- good amount of seating
- shaded area, over all layout. Please ensure the space is accessible for wheelchairs, including the tables, and access to benches
- Unique architecture and looks. Like food vendors can setup near the site
- The round things!
- Interesting, unique, I would want to visit
- I love the circular/curved benches and the curves of the design in general. The circle benches that arch overhead are very cool.
- A bit quirky - nice use of curves and texture
- I like the playfulness of the design; I think the elements in plan translate well to the vertical elements; It contains lots of fun elements
- The wooden structures
- Would cost less
- Fun space, visually pleasing. Like the round shapes, sun shaded area and the performing area with the ping pong table.
- More green space
- The unique loopy bench
- It's got a cool, organic looking curve to it. I like the shapes and range of seating/play spaces.
- Lots of seating... like the roundness of it
- variety of seating types.
- Natural flowing
- Everything
- More characterful, playful architecture. decent sightlines (discouraging rough camping and street drug use), mixed with friendly non-squared/angled "organic" forms - approachable, comforting, with a look that should weather the vagaries of "trendiness".
- Design is modern
- It's very interesting and could add a neat architectural component to the area.
- Public stage
- Circular benches, curved spaces are interesting
- Everything. Like the layout more, makes it more unique.
- Fun, retro design.
- really like all the green, and I like all the places & ways to hang out

- Interesting and unique design
- Building sufficiently screened by trees for separation. creative/interactive design. Good flow. Balance of wood and concrete. Shaded seating areas.
- Dont like it , too gimmicky.
- the curve shapes and modern design
- I like the benches facing south and west, great for having coffee or a snack and sitting in the sun. Also the seating area and the diagonal walkway would work well.
- I like the custom seating structure- very creative & fun. The two-level wood seating structure is placed in a good area and can be easily re-imagined as a stage.
- Lots of trees and looks like a fun spot to hang out.
- Creative architecture, maximize usage of landparcel, better seating arrangements
- i like the sitting area, trees, lay out in general of the concept.
- more of a 'round' configuration, more open, more communal, more focused. appears to have less seating which is important to dissuade the many drug users from sheldon chumir setting up camp
- Non straight lines
- More grass, ping pong table - will stimulate activity in the park!
- It has more energy and the design is fun which I believe would draw people in to the space.
- The furniture and dynamism of the design is beautiful.
- I dont like it
- Softer , less hardlines, pingpong table, flex space
- The design is very fresh and youthful. I love the ping pong table and the hammock mounting loops.
- Modern and interesting design, not as old time park style as number 1
- prefer concept 2 - like the interesting seating options
- Some of the custom wooden benches have a more dynamic geometry. More activating features in this option like the pingpong table.
- It's playful and inviting.
- Nothing
- Space looks like it encourages people to spend time there, hang out. Lots of shade too
- the round benches, not sure how it will keep over time
- areas are well defined and the brick seating areas
- I prefer Concept #2. The park's orientation feels toward the street, the design is fun, and I like the wooden "custom seating structures." The permeable pavers are also a nice touch.
- Playfull wooden seat structure looks awesome and I really like the idea of a shade structure... I love the use of space. Love the idea of a ping pong table; this is a great idea
- cool sculptures and curvy
- I like the circular shape of the rendering and the placement of the entrance.
- I like the round edges and interactive pieces.
- unique and artistic design
- the ping pong table, the flexibility of the space, the wild design
- cool circular benches
- decent concept - keep the dogs out
- The meandering nature or the path through the park and the planting layout. I like the wooden shade structure.
- The first impression of the park (SE corner) is notable. Use of a permeable paver, only if accessible and will survive winter.

- Very unique. Slight retro flavour. Custom furnishings are very fresh. Cohesive despite the great variety of textures and surfaces. Good use of nodes for gathering. Programmed but not programmed - lots of opportunity for organic use of the space.
- More natural
- Pop pop, the wooden seated area near the flex space could act as a stage for low key concert/performance
- Open concept, easy to navigate, unique look
- walkways
- Lots of different small areas within a bigger area. Like parks within a park.
- Like the curvilinear design, hammock space, tables.
- lots of play room and softer design - fewer straight edges
- Food truck area
- I like concept 2 better than concept 1. More innovative
- I like the undulating concrete wall around the grass in Concept 2.
- Love the circles, more flowing pathway - the design is better than concept 1. Big pan of the permeable pavers and the ping pong table. Also like the circular covered wood structure, the two-tiered seating.
- More open, safer, shorter term use, still functional
- Love the flow with the circular patterns. Better fixed shade for a SW exposure. Hard to tell but maybe a better line of sight for drivers turning right from 16 Ave SW northbound to 9 St SW.
- I like the wood seating structures / platforms - they are playful and interesting. Lighting is important in this location too!
- Less linear
- I like the playfulness of it. The concrete ping pong table is a fantastic idea. The creative seating options, use of curves (rather than angles and straight lines) seem better than Concept #1
- Wood shade, concrete ping pong table
- This one was more visually appealing. I loved the round wooden seats.
- ping pong table, sheltered seating, more grassy areas, more seating variety
- its good
- The custom seating structures Look good and I like that the green space is accompanied by tables or seating. Ping pong is a cool idea
- Whimsical, dimensional, quirky, and fun
- Do not like it as much
- The round theme is playful and fun, the furniture looks super unique. There are new, unique elements in the design (like hammock loops). I really like Concept 2.
- It has shaded areas. It's bolder and more interesting.
- I like the unique seating and love the idea of permeable pavers. This concept also seems to have more open green area which is preferred. The concrete table tennis is great!
- Everything
- The idea of a concrete ping pong table, and the shaded area.
- Love the rounded seating areas, the sight lines look more interesting
- Don't like it
- The ping pong table.
- There are trees! Too many of the small parks don't have any tree cover, which makes them unusable in the summer heat.
- The "loop" seating looks original and fun for kids, also it gives the park som character.



New Park Space in the Beltline

Stakeholder Report Back: What We Heard, What We Did

December 2019

- Busier, a little to gimmicky for me. Doesn't appear to have as much "green space". The circular benches look neat but how utilitarian are they?
- Interesting seating. The central flex space.
- Curved walkway, wooden table, wooden seating structure
- Beautiful curvilinear lines contrasting the straight lines of downtown
- The design is unique. The circle motif is playful, which makes me want to spend more time at the park. I enjoy the work "pods" for lack of a better word as well, as that is very conducive to what life is like in the Beltline for many residents.
- I love the aesthetic. It feels funky and original. I also like the variety of functional spaces, like the shade structure and the two-level seating structure. I think this version could be much more functional and better looking.
- The structural bench. The curvy sidewalk lines. The trees. The concrete ping pong table.
- Creative design adds visual interest
- Shape of the path
- Offers more wind protection because of the tree arrangement
- Variety of elements used
- It had a more modern look, and was open
- The Circle benches, and flow of the curved path. The wood seating areas within the grass are interesting and a great addition.
- Lots of above ground features that are likely more conducive to hanging out there and play opportunities for kids
- winding paths are nice and add variety
- Shade structures
- Beautiful use of circles and interesting design choices
- Very whimsical, love the circular benches (seats won't get wet when it rains!) And the plant diversity and more natural feeling are amazing
- I like that there appears to be lots of grass and greenery.
- Sitting options
- Aesthetically it's a more interesting design
- I think I like the flow of it more
- It's a park.
- Covered structure
- More unique and artistic features
- The amount of seating and it is more interesting to look at and experience as you walk through
- Concept two seems to be more unique and I prefer it over concept 1.
- Looks nice and organic, less geometric
- Soft clean lines, feels happy
- Pockets of space for different activities. The circular, waved seating and structures are very nice and pretty cool. May end up being used by skateboarders to practice.
- Organic.
- I like the circular wooden structure and the gathering area. I also enjoy how the pathway isn't so linear and is more flowy.
- The design is interesting and seems more modern
- Curves feel more natural, concept seating looks "fun", more opportunity to explore.
- Interesting
- Lots of viewing spaces and functional things



New Park Space in the Beltline

Stakeholder Report Back: What We Heard, What We Did

December 2019

- Some structural elements seem interesting from a sculptural point of view, but uncomfortable for actual users.
- Very modern, inviting, and lots of different ways to interact with the space.
- It looks like it has potential to be a modern and fun space in the city. The ping pong table is a nice touch
- I like the curving nature of the lines in design.
- Fat better, uses the space better
- Feels more playful and inviting. The space encourages lingering.
- I love the "loop" benches, the hammock hanging points and and the ping pong table idea. although i don't know if a ping pong table is viable, would you have to bring your own rackets and balls?
- Love the creative design of the wave seating (section 1 & 4)
- Feels natural, the curves give it an organic feel, nice shaded spots, nice custom seating to give the space an elevated look and feel
- Less plain looking, might be fun for kids to run around in, play hide and seek
- It is sleek simple but modern
- Seating areas are nice
- Interesting features
- the circular chairs
- It feels more full and uses the space.
- The curves may help dawdlerse
- More open and aesthetically pleasing. The neat structures and circular seating makes it an exciting new place to look at.
- I don't really like the rounds and circle patterns
- Permeable paving, green space, unique seating, attractive layout
- The verticality of the entry feature is good placemaking. I also enjoy the idea of the undulating retaining wall as a feature. This can be used to create a strong edge to the site.
- I love the round seating areas
- Green space
- The sort of open concept. It'll make people feel safe
- The flow and circle feel
- Fun and interesting architecture elements. More interactive.
- Good private organic flow to the park
- The round features are unique while it still is versatile and useable like concept one.
- Very fluid flexible space nice seating options
- More rounded layout creates a soothing vibe (less sharp edges than in Concept #1)
- the trees and some of the wood seating structures
- Like the curves, seems more natural. Like the hammock idea and the outdoor ping pong table.
- Beautiful. Stage is cool idea.
- I love the different places to be and things to see. The flow is quite nice. I'd like to hangout and walk there
- Modern
- Larger rounded table for bigger groups
- Image 6 showing some of the vegetation
- Good flow and interesting design.
- More natural, curves play well downtown where everything is straight lines
- The benches are unique and cool sets it apart from the all the other places
- the brick walkway



- The use of circular shapes, different than the usual parks.
- It looks more organic.
- I prefer the less linear hardscaping and how the soft landscape appear - image 6 appeals. Also the curved benches. Love the idea of table tennis, if wind is designed for! Again, the fun passive features are nice, so long as they are useful.
- Interesting shapes and architecture.
- Like the variety of textures
- Gazebo
- Round shape of benches
- Curves are more inviting than angles
- Curved path and overall design
- Playful structure
- Flowers & wild grass
- like furniture of this one
- overall round shapes
- round shapes/curves
- like the shapes - less angular - like the curves
- natural grasses & vegetation
- love the circular wavy seating
- Love all the trees
- Custom seating structures and playful wood seating
- Like playful elements
- trees along 9th
- like shapes
- food trucks
- Lighting - safety
- like the natural concept of site 2
- like flowers & trees like crabapple
- like the places to stop & stay
- Likes curves. Wandering opportunities
- Ping pong table
- flex moveable seating (would like)
- Likes the curves more than angles
- wooden benches offer a warmth
- Likes it
- Curviness of sidewalks and seating structure appealing
- Likes the human scale. Not too busy
- Like ping pong tables
- Prefer diagonal NW - SE - although curves are nice
- I like the circle seats
- Likes the curvilinear
- Wood seating could double as a stage
- Do like shade spaces

Q6: What do you not like about Concept # 2 found above?

- I like it



New Park Space in the Beltline

Stakeholder Report Back: What We Heard, What We Did

December 2019

- all the rounded edges feel a bit too over designed, + more trees
- Still not enough interactive space for me and my young kids
- Sightlines aren't as clear.
- Nothing
- I would recommend for either design to adjust the existing planter structure to allow more direct access to and from the park from the Royal next door as proposed in both designs. Is there a way to incorporate the chaise lounge idea into #2?
- I do not think the forms fit well within the neighbourhood; I do not like the covered seating
- Lack of greenery and nature.
- Not that appealing
- Needs picnic table swing
- Curves make it feel old
- The entertainment space is not quite as nice as the first
- There looks to be a lot of concrete/pavers
- The circular covered benches are climb-able and likely won't get built that way.
- Everything.
- Nothing
- Looks more expensive and maintenance heavy. Disregard this feedback if that impression is factually incorrect.
- Nothing that stand out like a landmark art
- My concern is that it may encourage people sleeping in the park with the covered tables.
- There seems to be a lot more trees.
- Nothing
- The wooden shelter may attract homeless and drug use as it is a shield from public view.
- Not very many street trees to shade people as they walk by. Yes, I see the two grey circles. Just two?
- nothing, it's fine
- Less greenery
- The performances area shouldn't affect the quiet enjoyment of the residents - end no later than 10.00pm. The wooden seating will attract skateboarders and will need to be studded when installed to prevent damage and noise. Landscaping should have scent .
- Not enough green space
- I would like to see more green with it
- No complaints.
- The paths get very narrow in some areas. Also, inconsistent radius' in the pathway vs. furniture vs. concrete wall.concrete
- Looks good to me!
- Limited greenspace
- it would be nice if it had a fountain or water of some sort.
- no water feature
- Like it all!
- I don't love the wood shade area.
- NOT ENOUGH GREEN SPACES! More trees and wild grasses, reduce manicured lawns. The layout is neither aesthetic nor sparks joy. There is no harmony nor order to the layout.
- I don't like the round brick things. Too busy for me
- Insufficient lighting - needs security cameras
- The grass area. If you added #5 from concept #1 it would be perfect.

- Nothing
- it should be skateboard friendly
- The shade structure seems out of place and of not much use. This option doesn't play with levels in the sodded areas like concept 1, which was more appealing. Planters don't seem to be raised like first concept, which is a mistake.
- Could the "playfulness" feel dated a few years out?
- Confusing, cluttered, the covered round bench things will be used as ramps by scooters FOR SURE. too many things to get ruined.
- Nothing
- small patches of grass
- plywood structures?/ How long with they last? Is there an annual upkeep budget?
- I feel as though the grassy areas are not conducive to lounging, but that is a trade-off in such a small space. Again, I enjoy Concept #2 more than Concept #1.
- so much going on in such a small space love the shape and what you have done but maybe cut a few things out
- hiding places for bad guys and sketchy behaviour
- potentially higher maintenance costs
- Too stark and edgy.
- I'd be concerned about the wearing/aging/taste level of entry structures in the future
- main walkway not as conducive to walking
- it's a relatively decent idea, unless you allow dogs to run wild...does Bylaw actually care about giving horrible pet owners tickets, or does them getting out of their vehicle pose problems?
- I am not sure about the picnic table swing in either concept.
- Probably too much going on; structures, platforms, ping pong, swings, types of seating, etc. Not much usable green space, too much hardscape. Design hides the building interface behind trees, should be more open for safety. Smaller sidewalk on 16 Ave.
- Looks a bit like an intestine
- The wooden circle lounge is cool, but 95% certain homeless people will be sleeping in them and making them dirty and stuff. Not your fault though we just have lots of homeless people
- Lack of greenery and abundance of pathways/concrete spaces
- the idea od benches that require lots of maintenance and cleaning (the roundish seating feature)
- Too many nooks and crannies that in this neighborhood get taken up by 'campers'. Homeless and drug users will love it.
- Ensure good lighting and garbage and recycling receptacles, which are not shown on diagrams.
- A lot going on... maybe if we remove a few components.
- The covered wide seating areas which entice homeless people to sleep.
- I don't like the round wood seating structures.
- Not much, I prefer Concept 2 over concept 1.
- The curves could be a bit annoying
- Kind of cutesy. Worry that the swinging picnic tables and circular shelters will degrade.
- most of it. there is just too much going on in such a small space. I like there wood stages/seating, but there are too many. The custom seating structure will encourage poor social behavior that we work so hard as a community to minimize.
- Doesn't appear to have much seating
- ugly architecture
- Round wood sculpture/bench things



New Park Space in the Beltline

Stakeholder Report Back: What We Heard, What We Did

December 2019

- curvy covered seating structures will encourage children to play on top, slide down, etc. disruptive for people below
- Those 'custom' wood benches should be avoided because they will rot away in Calgary harsh climate. The park at the former lawn bowling club made extensive use of wood which is already rotting after 1 year
- Not much, it looks good
- Less usable passive space, aggressive use of concrete and pavers
- The round wooden circular seating-looks out of date
- My fear with Concept 2 is that all the wood furniture looks very high maintenance and will look terribly worn in a few years if not re-stained and maintained consistently.
- It seems like it would be less wheelchair-friendly because of the meandering pathways.
- Please choose native vegetation when planting this park!
- Nothing
- It seems very open, like a space you would walk through and not stop to sit. The rounded seating along 9st and 16ave is an interesting concept, but it appears to create a barrier to viewing the park and it will definitely be climbed on.
- Love it
- Don't like the pattern
- Too busy, does not appear relaxing, rather confusing
- Paved walkways aren't usable as communal areas. Calgary is already littered with unused public spaces with tons of concrete and benches. Even in the mockups, people are mostly just passing through this space. More greenery!
- seems not too applicable
- Very complicated to walk across it, even with some elevation changes that will make it hard to cross on winter.
- Nothing
- I am a bit concerned that the wooden structures would be easily vandalized.
- The ping pong table seems a bit gimmicky
- Cover on picnic tables and benches creates an area that can likely encourage unwanted loitering
- Custom picnic table looks like a jungle gym. Accidents waiting to happen with all those bars since some kid will climb up and on. Shocked the city would consider such an inappropriate design.
- The feature benches along the street separate the space too much and might encourage loitering, drug/alcohol use
- Lack of acknowledgement of traditional land it is on
- I'm not sure about the long-term viability of the fancy modern seating structures. It also seemed to be less dense with trees
- na
- Both options have boring paving/tiles with little colour. Picnic table swings are of no interest.
- All of the above since the positive features may become attractive to illegal activities...if this design or type of design is chosen, thought must be put into mechanisms to dissuade illegal activities.
- While I like the wooden circular features, skateboarders will use this to destroy the wood, so it will have to be replaced frequently.
- no direct paths through the park
- I dislike nothing.
- The circular structure has no benches underneath
- I dislike the wavy paths, they do not seem very practical. Also the benches with no backs seem uncomfortable and pointless.



New Park Space in the Beltline

Stakeholder Report Back: What We Heard, What We Did

December 2019

- If the goal is to create opportunities for inviting for vandalism, skateboards misuse and homeless shelters, this is the more inviting choice. Given that, Option 1 makes more sense for the long-term.
- More space
- I don't like how busy it is. I can't imagine walking through it on a regular basis. Too convoluted.
- Less greenery
- Unsure if it would be difficult to just cut across for the most direct path
- Can't read the print on this either, zooming in just gets me a bigger fuzzy mess.
- Not easy to walk through park if trying to get shortest path across.
- I have concerns that these parks just get over taken by homeless people or drugged out people so that citizens and taxpayers can't actually enjoy it or feel safe there, especially as it is quite close in proximity to the Safe Injection Site.
- Flat
- lack of open space, less natural
- The main activities appear to be sitting and cutting through. There is nothing iconic, nor anything that has any movement, nor colour, and limited potential for play. There should be something specifically Instagrammable.
- I'm concerned the wavy bench idea may attract skate board noise. Not enough grass space.
- The lack of green space and the 'maze-like' layout
- I do not like the multiple overhead coverings
- I like concept 2 overall much more. Although i think the best would be to include the swinging benches into concept 2 as well.
- Not a fan of the pin pong table and would like to see more green space (grass and trees)
- There is nothing I do not like about concept #2
- Too many knocks, people will compete for those spots which will likely be found unclean
- Nothing
- not enough green space - too much stone/walkways
- Less sodded area
- too many teens
- The bubble edges are ugly
- I don't like the circular bench seating. It looks fruity.
- Nothing off hand.
- Mostly just the layout
- More green space
- Some of the features are too whimsical like the circular roofed shelter, and isn't providing value to visitors like it could. There's not enough feeling of prospect or refuge in this design. I don't think the majority of people are comfortable using it.
- I like everything about it.
- Probably very expensive for such a small space. Very worried it will become another homeless refuge, and another place for addicts. Laughed park is scary at times. Dog owners know not to let pups walk near treed area. found needle in such area with dog
- The circular, half circle seating area. Doesn't seem very functional or ergonomic. The space should have people in mind first, not the artistic value to the neighbourhood
- The ping-pong table
- Less green
- Bad sight lines making for yet another public park for people to smoke meth in. I live down here, so yes it happens.
- I think that the 3D features built with wood may be better in brick. Wood doesn't last as long.



New Park Space in the Beltline

Stakeholder Report Back: What We Heard, What We Did

December 2019

- Less green space
- The tacky wood loungers made my eyes bleed; the lack of a direct path across the park
- The flex space for performance / gathering in the middle
- The circular bench tubes with the arch overhead. Seems contrived.
- weird circular seating.
- Ineffective use of seating space.
- none
- Nothing
- Perceived higher maintenance costs, concrete ping pong table will crack and be unused after, narrower walking ways
- Large amount of wood which does not always weather well in our climate. Large structures for limited shade. I don't see ping pong played. A mix of things - less uniform.
- Could use more green space
- Costly design
- It's not a practical use of space and not enough space to lounge and hangout
- the weird structures.
- It needs more seating areas
- More hiding spots.
- Too many things are squeezed into this, a few less would let it breathe more. I think the table tennis and swing tables are enough to draw people beyond the benches and plantings. The wooden shade seems unlikely to be used as shown, why stand there?
- Sheltered areas may attract insects to create habitats.
- Don't like using wood. Huge maintenance
- too much concrete
- want drinking fountain
- natural grasses will deter sleeping - needs more
- Turns its back to the Royal
- Not enough grass
- Structure too enclosed - sense of safety
- I don't like the lack of trees
- too much concrete
- Don't know how many people would use the middle shape
- Need to make this area pedestrian and cycle only
- too busy for such a small park
- Round seating structure safety concern - sharp edges
- not open enough
- Too bushy
- Will there be ashtrays
- Use other material than wood. Ashtrays? Recycling?
- Round seating structure safety concern - sharp edges
- Like aspects of 1 and 2. Hard to decide
- Not inclusive for people of size
- Don't like furniture (skateboard concern)
- Hammocks will invite people to sleep overnight
- Not enough seating during rush hour
- Wood structure. Urban camping
- Concern about safety of circular benches



New Park Space in the Beltline

Stakeholder Report Back: What We Heard, What We Did

December 2019

- concern about shelter for drug use and other activities
- only one seating structure. Two is too many
- Too much meandering
- too much going on
- concrete ping pong table dangerous edges for kids to bump into
- Tight configuration possibly too much for small site