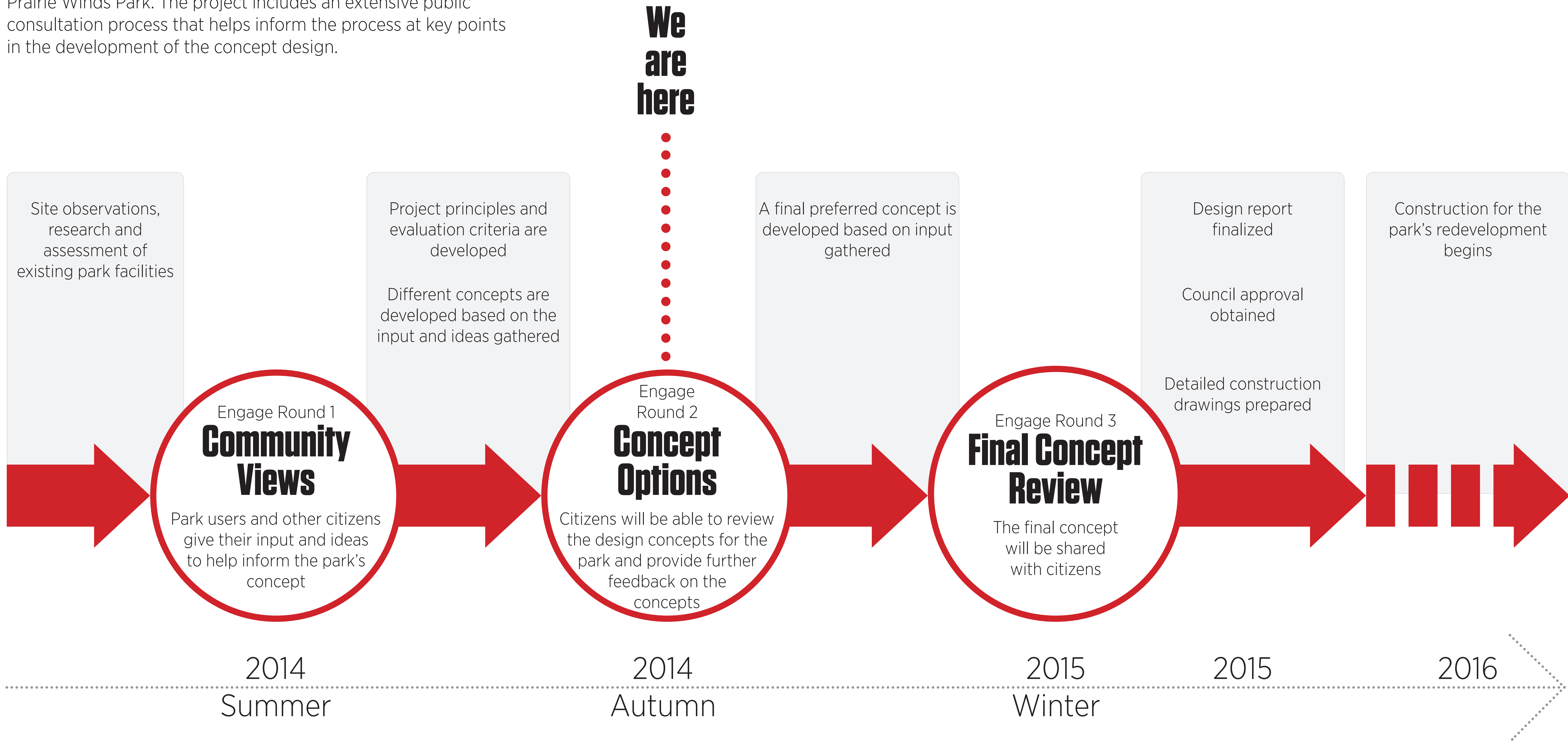


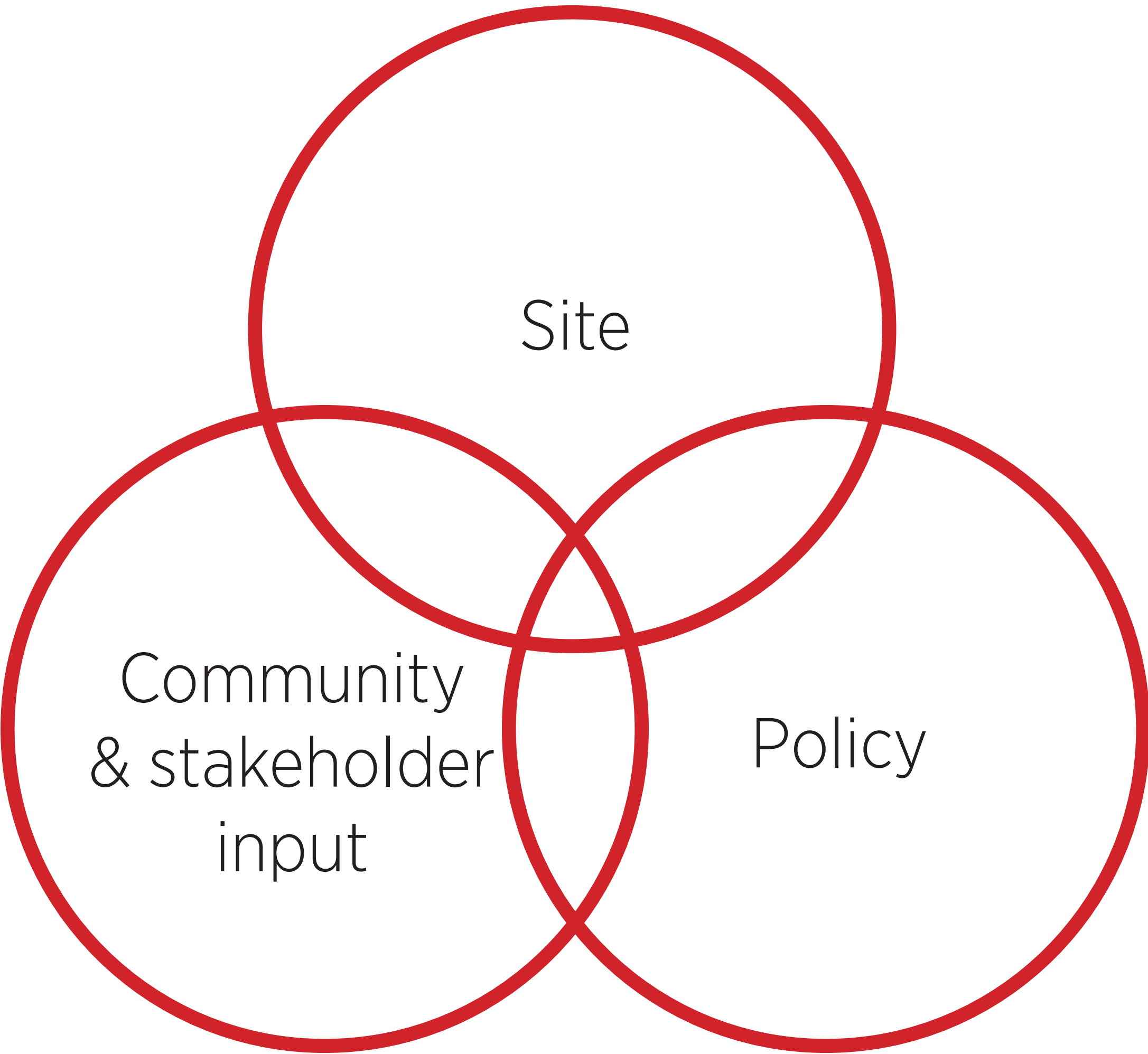
The City of Calgary has embarked on a process to redevelop Prairie Winds Park. The project includes an extensive public consultation process that helps inform the process at key points in the development of the concept design.



space2place

calgary.ca | contact 311

To understand what makes Prairie Winds Park a **much-loved place** and to explore how we can make the park better, the design process considers:



## Site

To ensure the design team gets to know the site and understands it well, we look at:

- the park’s location and relationship in the city and to its surrounding communities;
- the park’s history and past;
- what’s in the park and what features make it special;
- how well the park serves its current users and if it is being used the way people want, and;
- other influences.

## Policy

To make sure the park design follows current rules and guidelines, we need to know and understand policies from all levels of Government:

- Federal (Canada)
- Provincial (Alberta)
- Municipal (Calgary)

The City of Calgary policies include:

- City-wide policies;
- Parks policies (environmental and/or administrative), and;
- Policies specific to Prairie Winds Park, such as the Prairie Winds Park Management Plan (2011).

## Community and stakeholder input

To deliver a park design that fits the people who use it, we engage the public to ask them:

- What is the **purpose** of the park?
- What do they **like** about the park?
- What changes can **make the park better** and help **meet the community’s needs** into the future?

## How the information is used

A thorough review of the information collected from the community and stakeholders told us some **common themes** and helped us understand the **park’s role** in the community and in the city.

The information collected also gave us **specific ideas** about which areas work well and which ones could be made better.

These suggestions are taken into consideration and **solutions** are proposed that:

- work well for the site;
- are in line with policies at city, provincial and federal levels;
- can be managed with the City’s available resources;
- support the City’s goals;
- make the park more valuable to the community;
- reach out to more people, and;
- help and provide a good effect on the community.



space2place

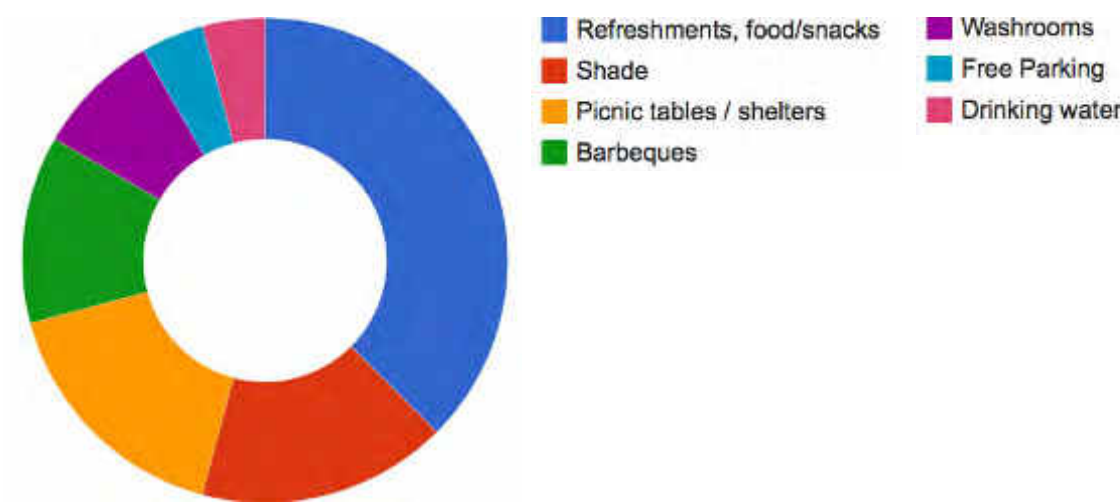
calgary.ca | contact 311

The first round of public engagement took place from July 14 to August 8, 2014 and included several opportunities for individuals to provide input on two key questions. Input was grouped into ten key themes outlined in our Phase 1 “What We Heard” report. The following provides a more detailed breakdown of input within these themes:

## What do you **like most** about Prairie Winds Park?

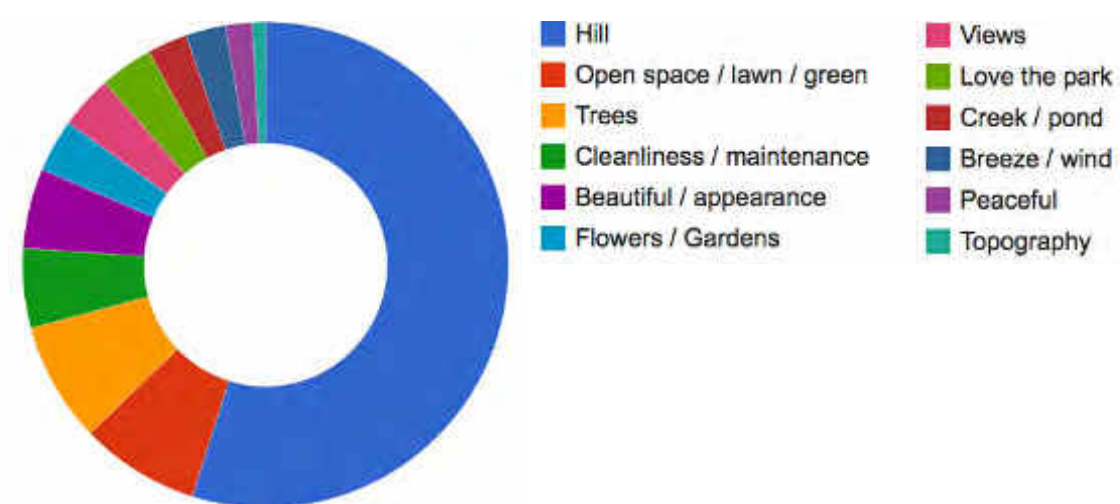
### Park Infrastructure Food and Beverage

Structures and services for comfort



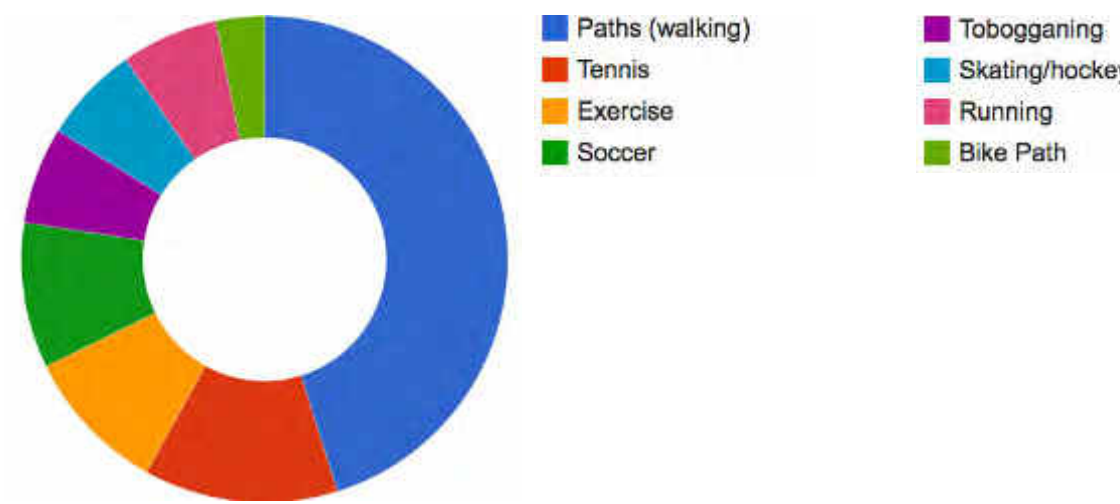
### Hill Aesthetic Landscape

Character and special features about the park



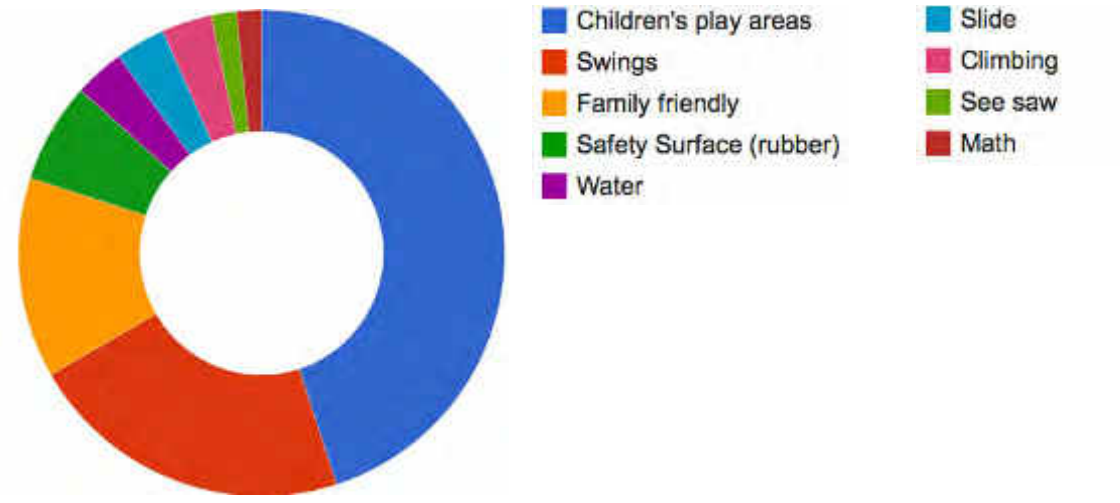
### Athletics

Sport courts, fields and fitness



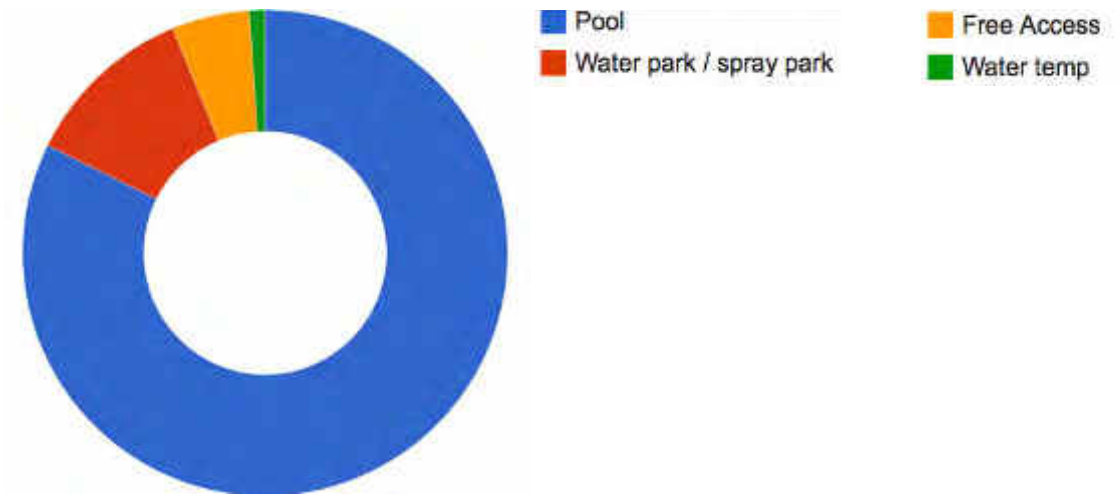
### Playground

Play areas and play elements in the park



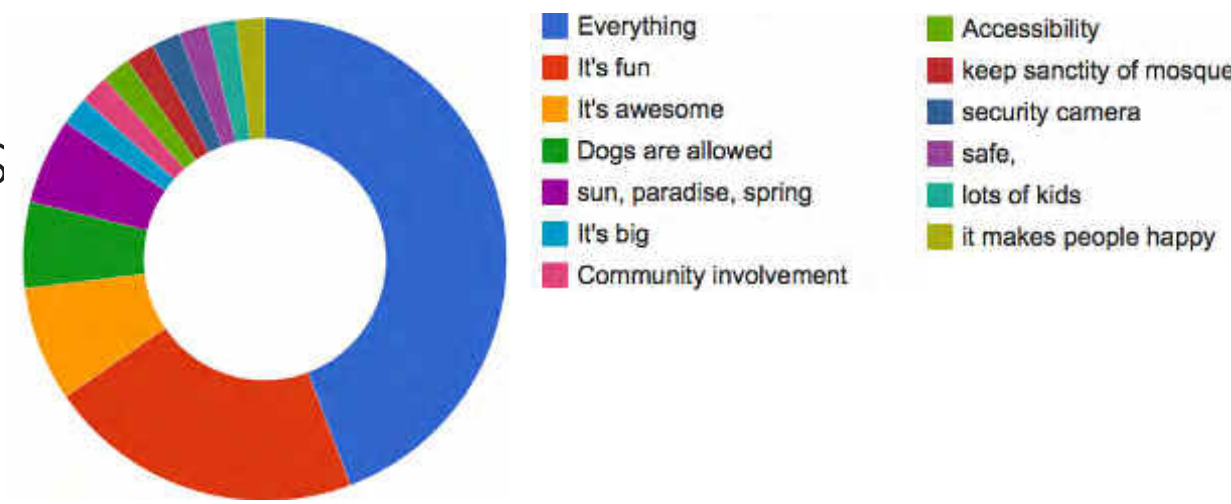
### Pool

Wading pool and water play areas



### Desirability

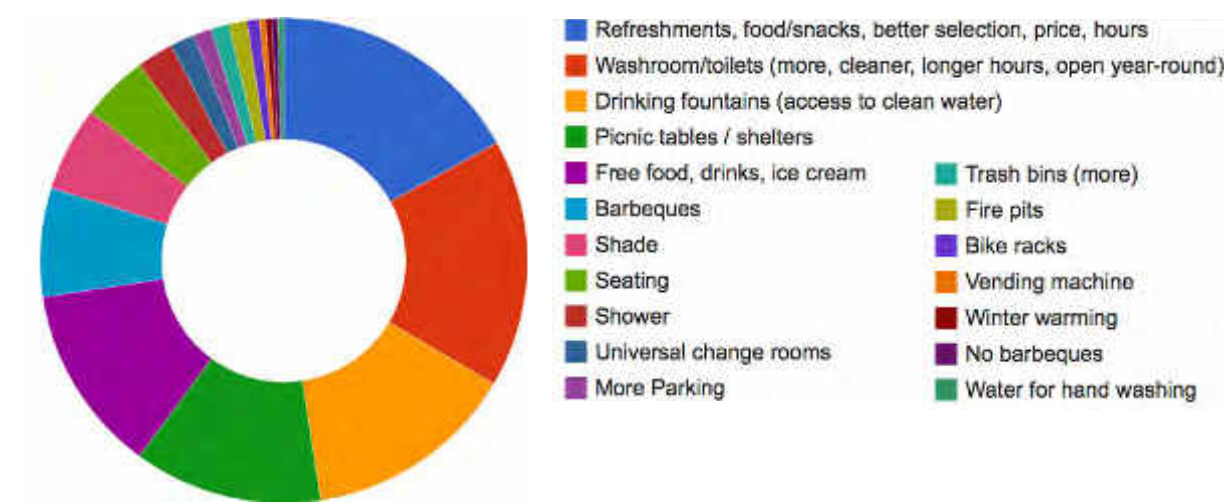
Other general comments



## What changes would **improve** Prairie Winds Park?

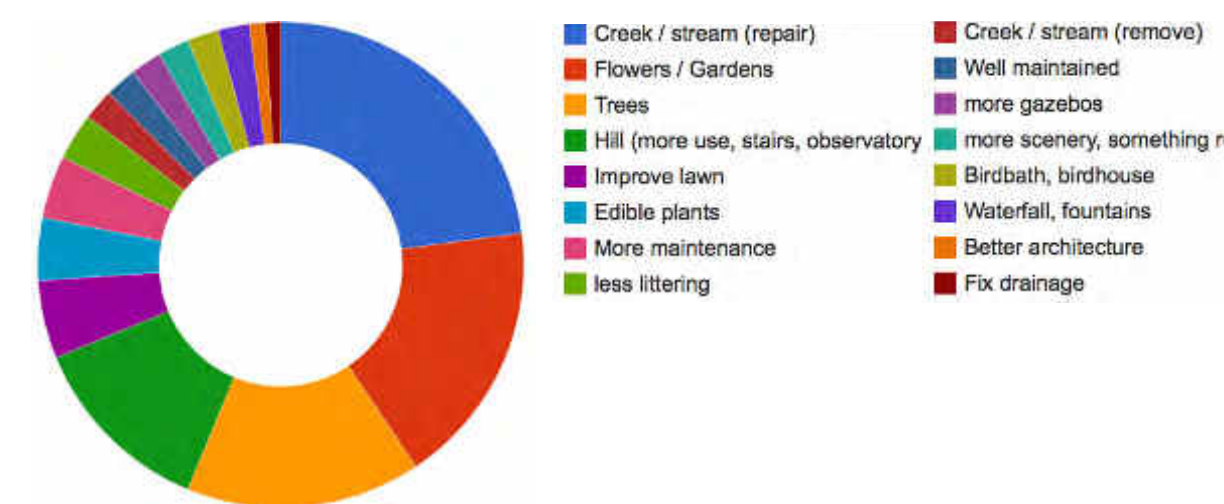
### Park Infrastructure Food and Beverage

Structures and services for comfort



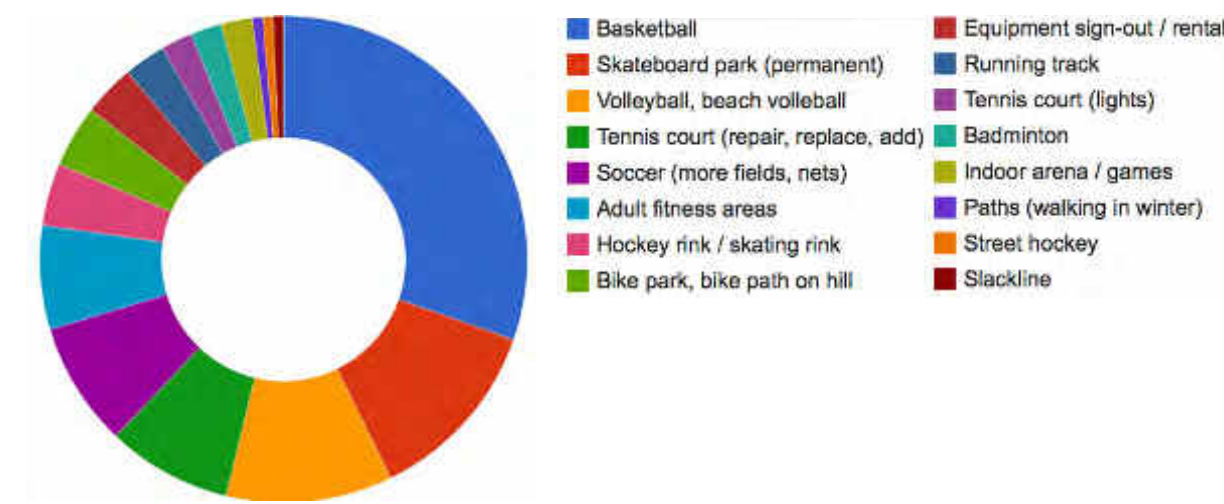
### Hill Aesthetic Landscape

Character and special features about the park



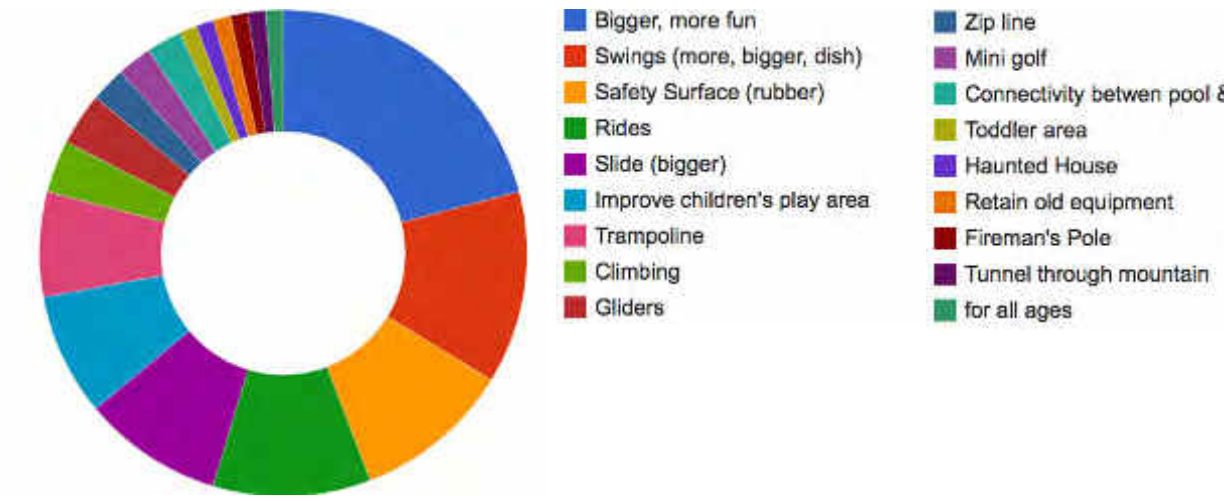
### Athletics

Sport courts, fields and fitness



### Playground

Play areas and play elements in the park



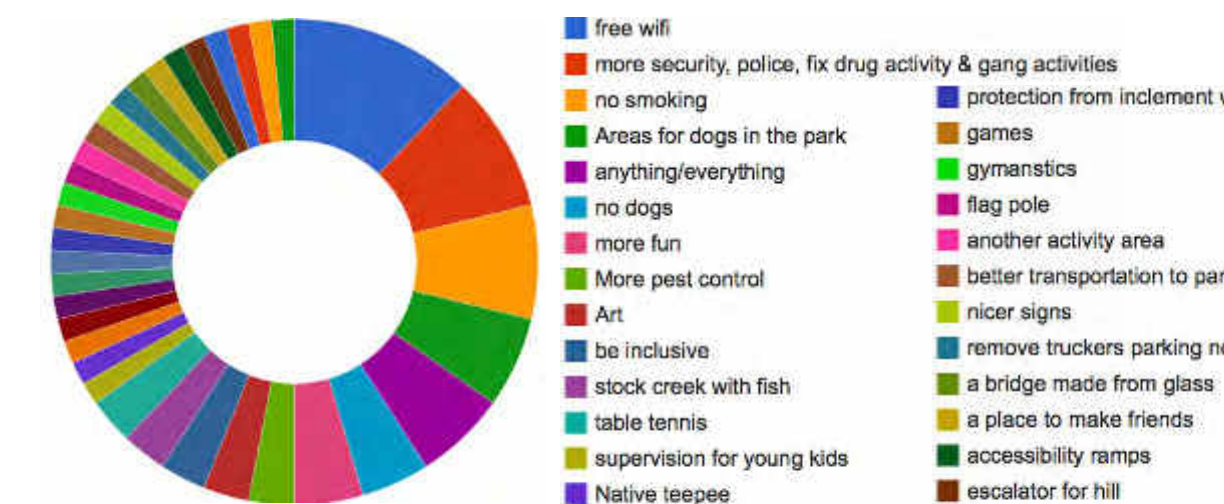
### Pool

Wading pool and water play areas



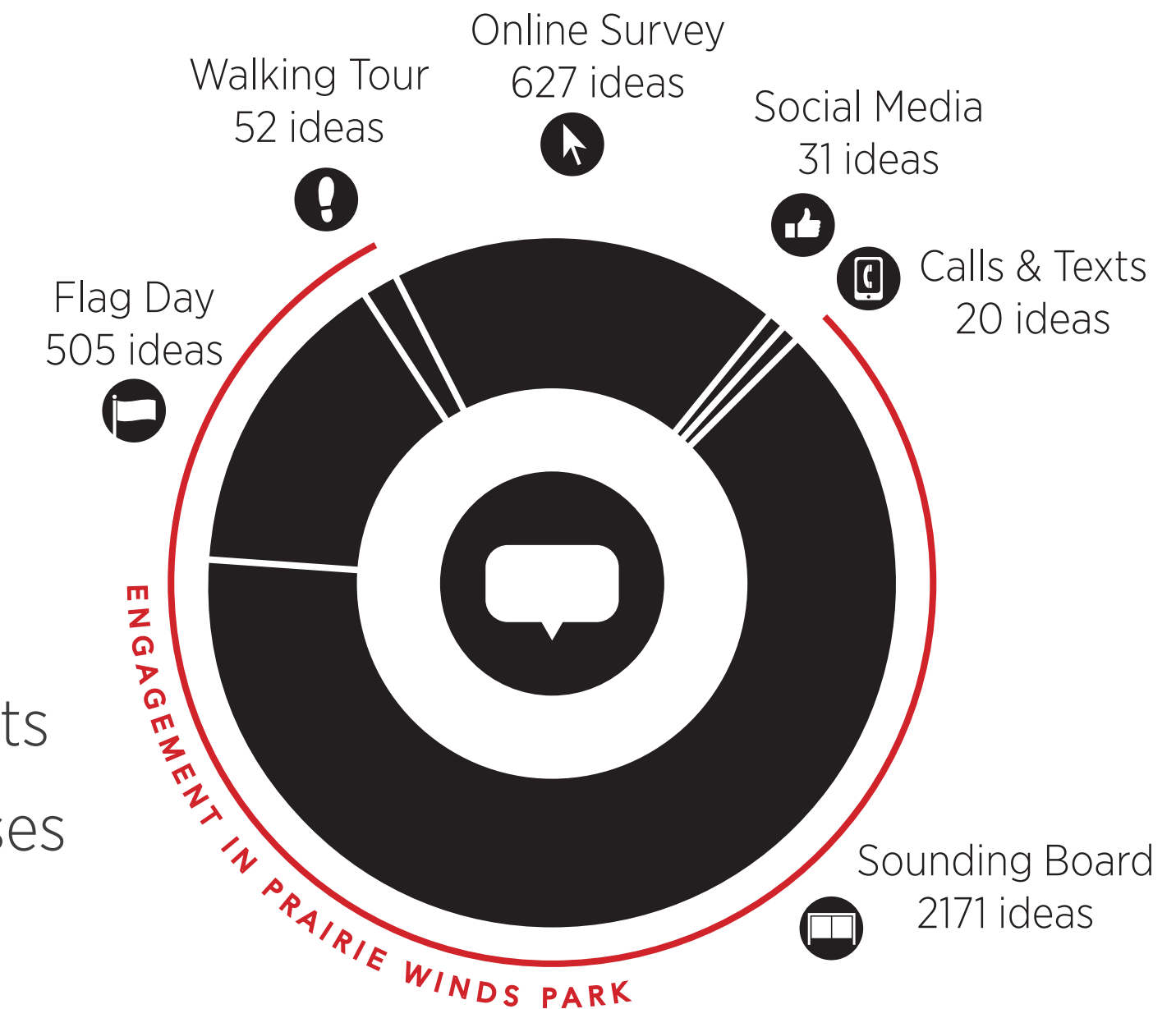
### Desirability

Other general comments



In the Phase 1 engagement process, feedback was provided through:

- Sounding Board in Prairie Winds Park
- Online Survey
- Social Media
- Texting
- Flag Day event (July 26)
- Walking Tour Events
- Telephone responses



The general input from citizens during the Phase 1 engagement process was very positive.

Individuals appreciate Prairie Winds Park as a **community resource** and the opportunity to provide input into its redevelopment.

There is generally a high **sense of ownership** and **appreciation of the park**.

The results of the first round of public engagement contributed to a clearer understanding of **what people value** about the park and what **improvements** might make the park better.

The input was used to inform the **vision, mission and guiding principles** as well as many of the features proposed in the **preliminary concepts** for Prairie Winds Park.



space2place

calgary.ca | contact 311

Based on input provided by City staff, park users and the general public, a vision statement, mission statement and guiding principles were developed for Prairie Winds Park:

## Vision Statement

A **vision statement** is intended to describe how we want the park to be in the **future**.

“Prairie Winds is a **well-loved, family-oriented destination** park that is both a **celebration of community spirit** and a **recreational centrepiece** in northeast Calgary. It is a place that invites visitors to **play, be active, recharge, and connect** with their **environment**.”

## Mission Statement

A **mission statement** is intended to describe the **aim of the overall plan**.

“To provide a **well-maintained, year round destination** for all Calgarians with elements that foster **family and community connections**, support **multi-cultural expression**, respond to **recreational** needs, and provide access to **green space** so that a **vibrant, healthy, safe and caring community** is created and sustained.”

## Guiding Principles

**Guiding principles** are **general guidelines** used to help make the design and park meet the vision and mission statements.

The park is **ACCESSIBLE** and **WELCOMING** to people of **ALL AGES, CULTURES, AND ABILITIES**

There is a **RANGE** of active and passive spaces that can be used **YEAR-ROUND**

Provide **STRUCTURES** and **SERVICES** to make the park **COMFORTABLE**

The park includes **SPACES** for families and communities to **GATHER AND CELEBRATE**

The **PATHWAYS** are **WELL CONNECTED**

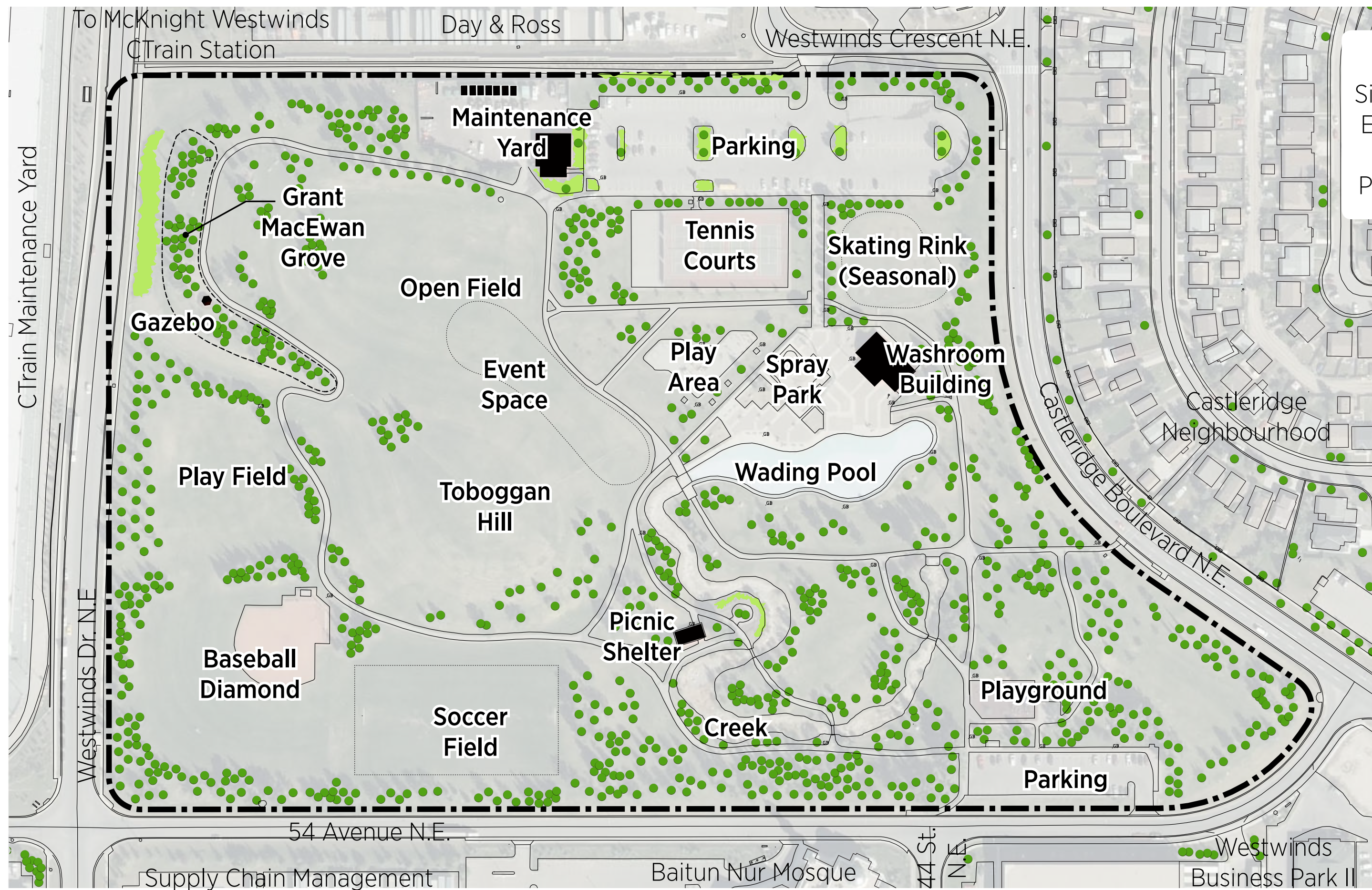
The park’s **UNIQUE CHARACTER** is **PROTECTED AND ENHANCED**

Provide **PLACES** to **PLAY, LEARN AND GROW**

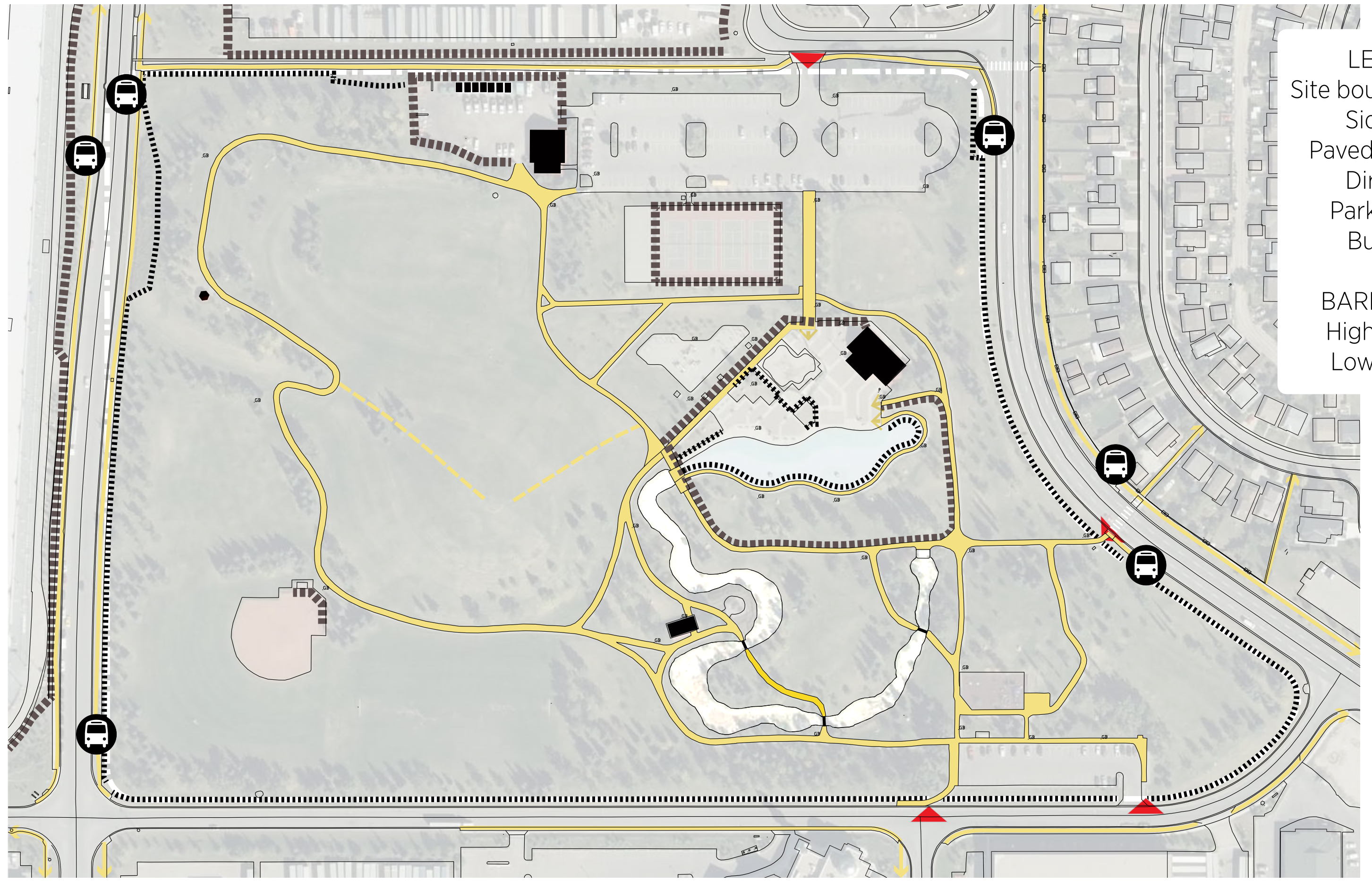


space2place

calgary.ca | contact 311



**Site Overview & Vegetation**



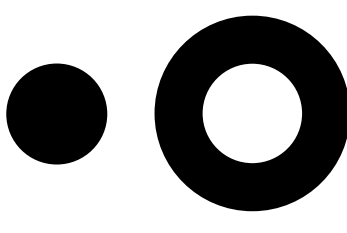
**Existing Circulation**

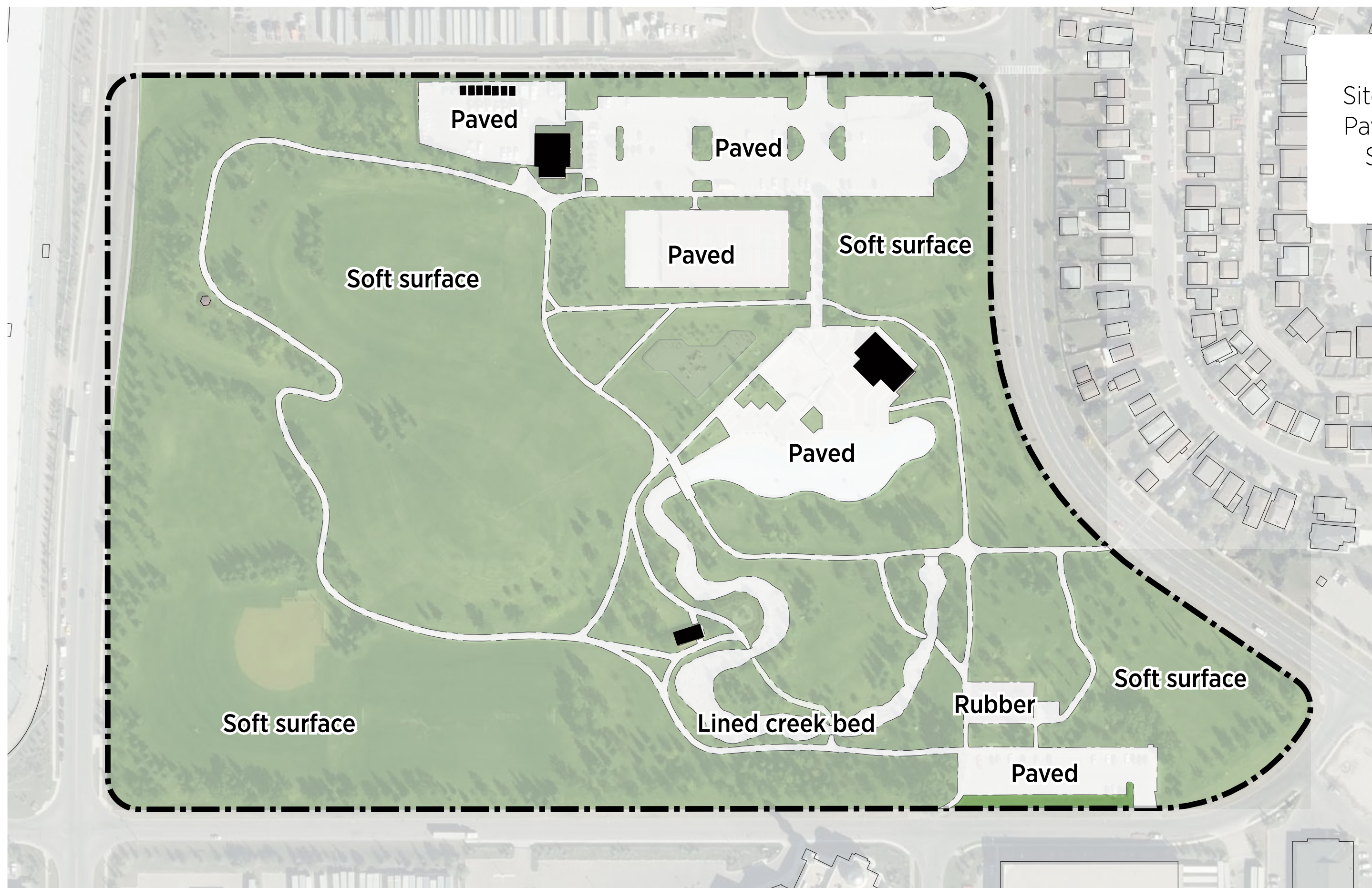


**Existing Site Activities - Daily**

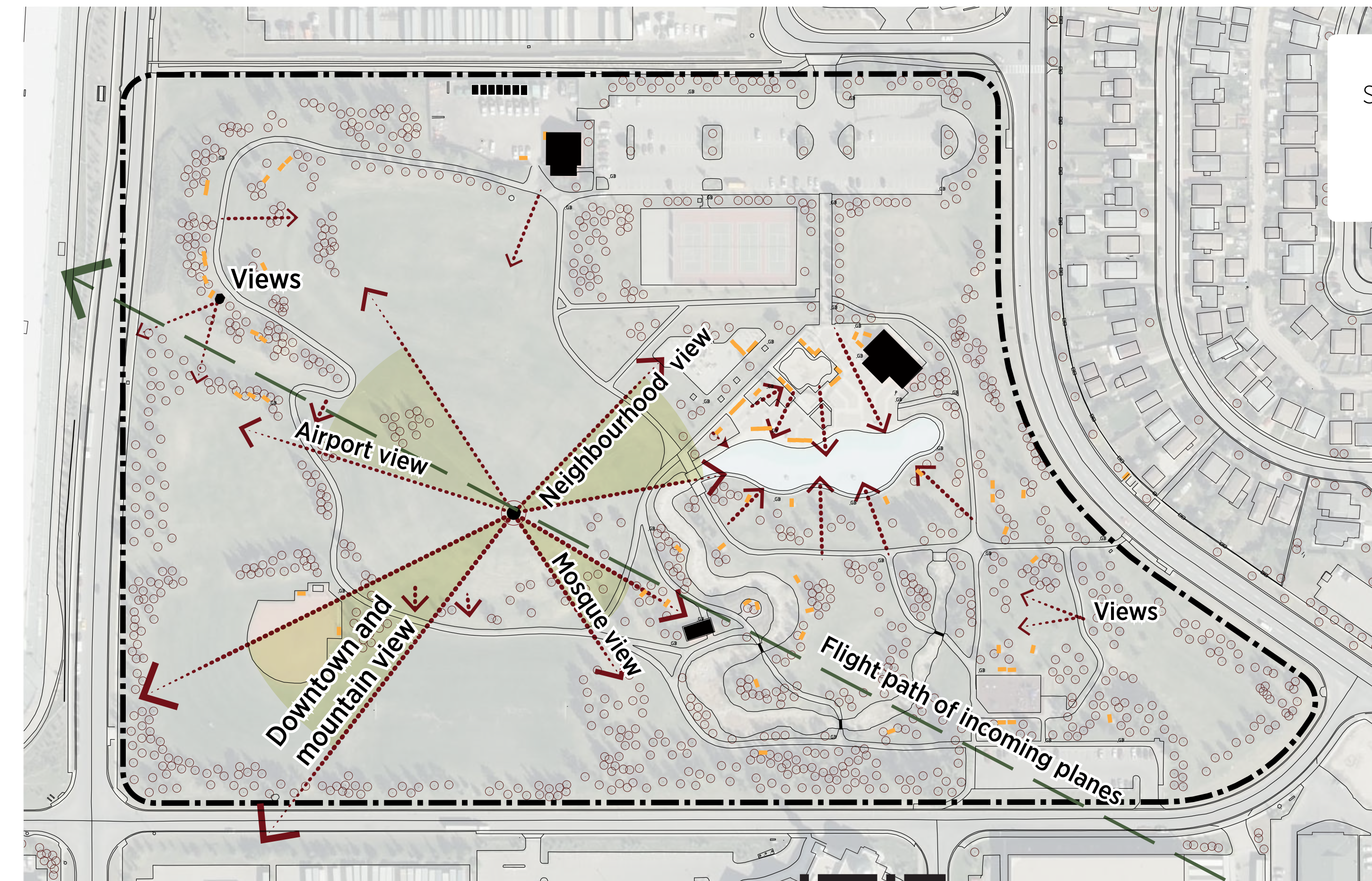


**Existing Site Activities - Special Events**

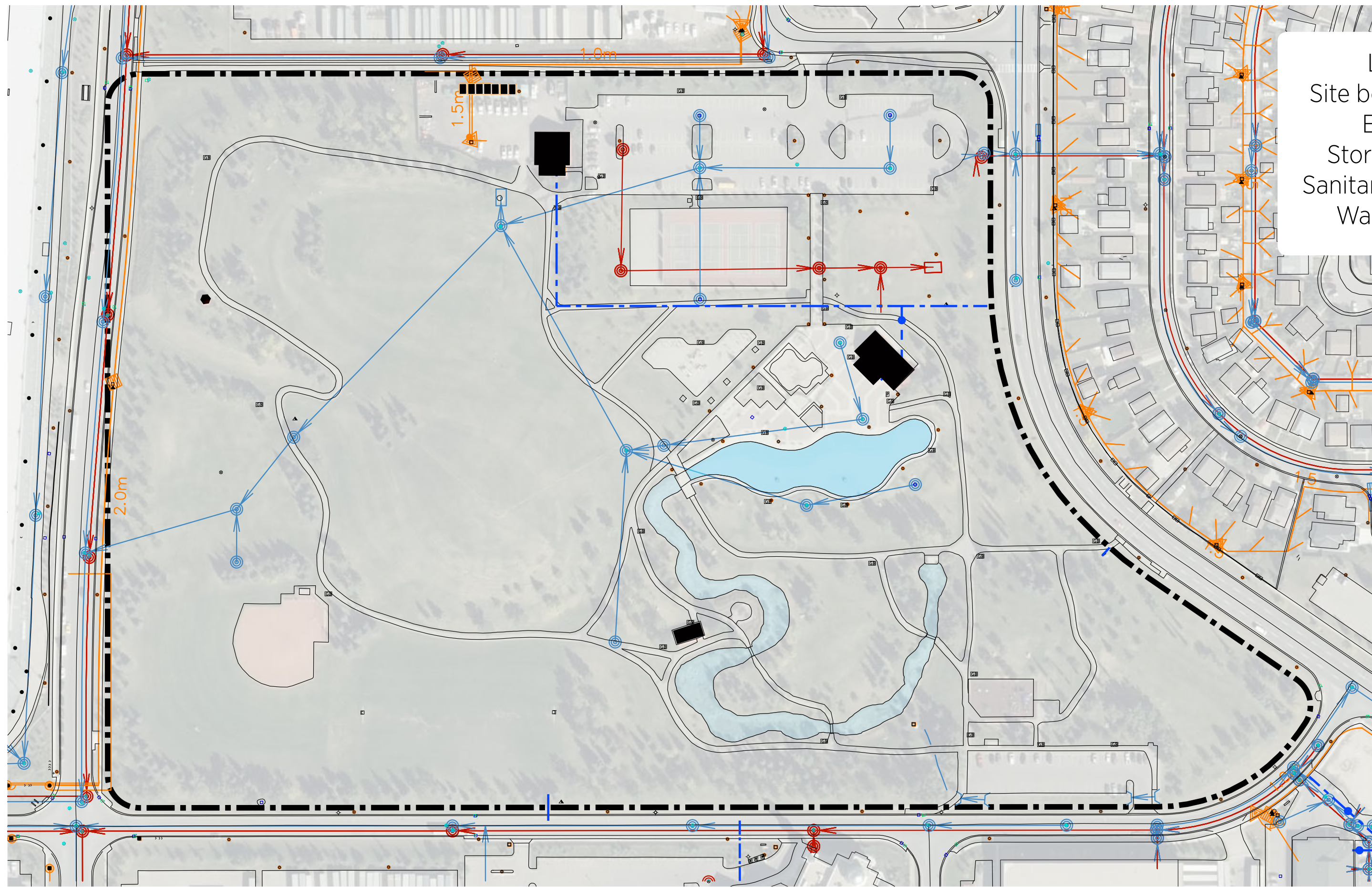




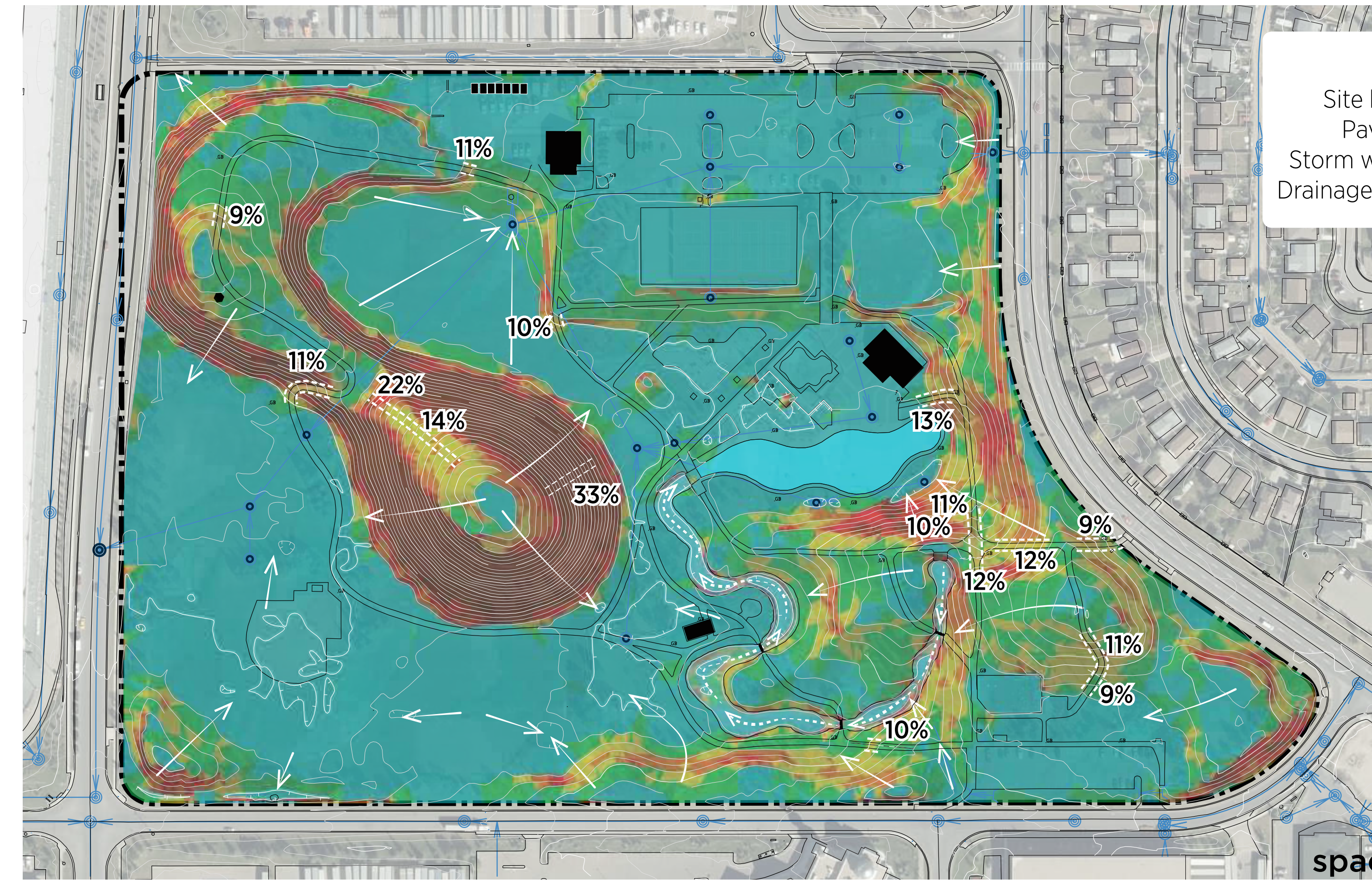
Paved vs. Soft Surface



Existing Views

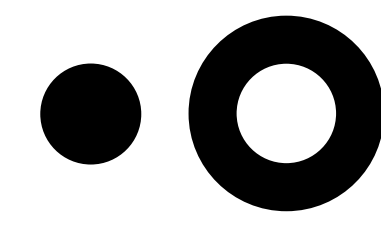


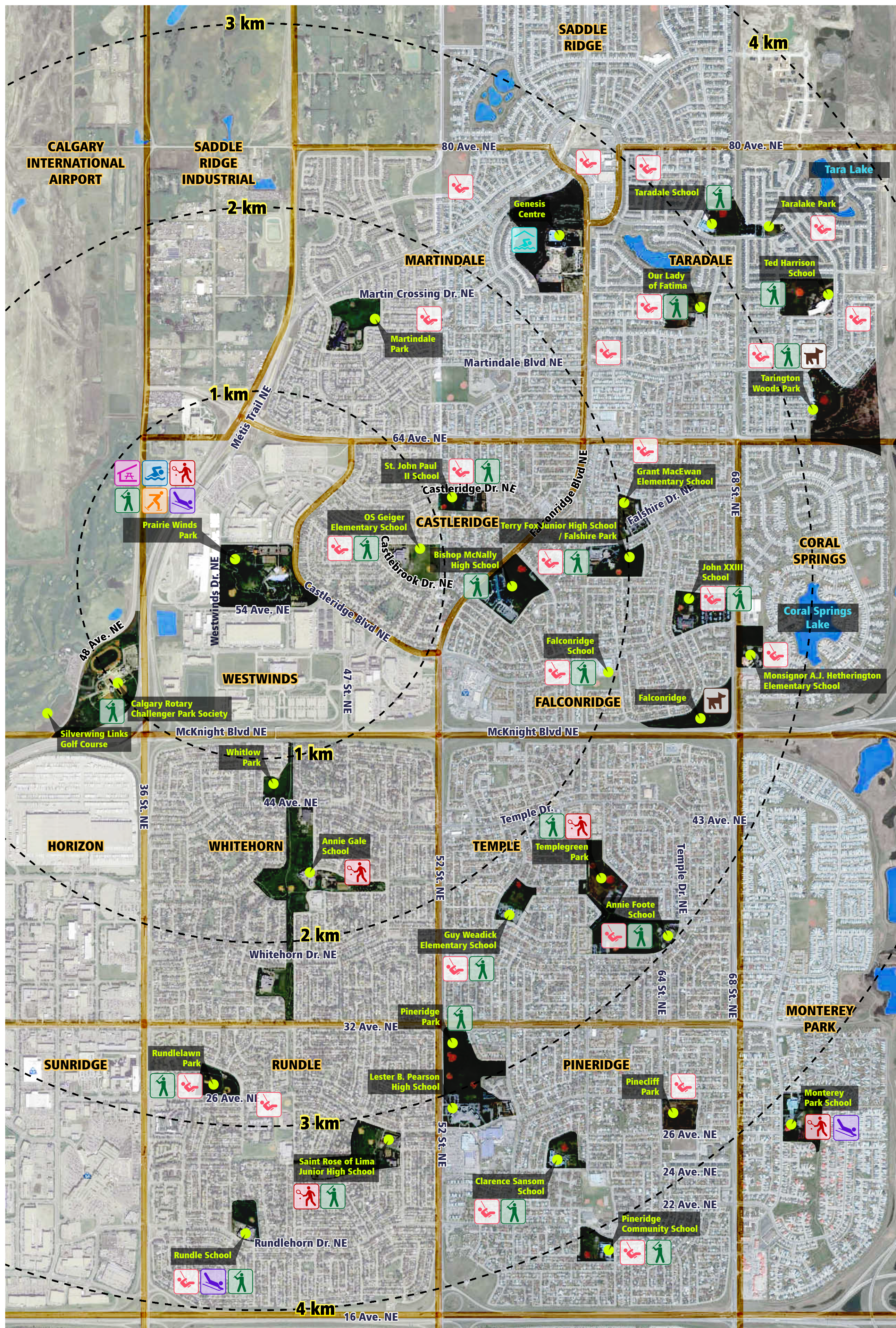
Existing Utilities



Slopes and Drainage

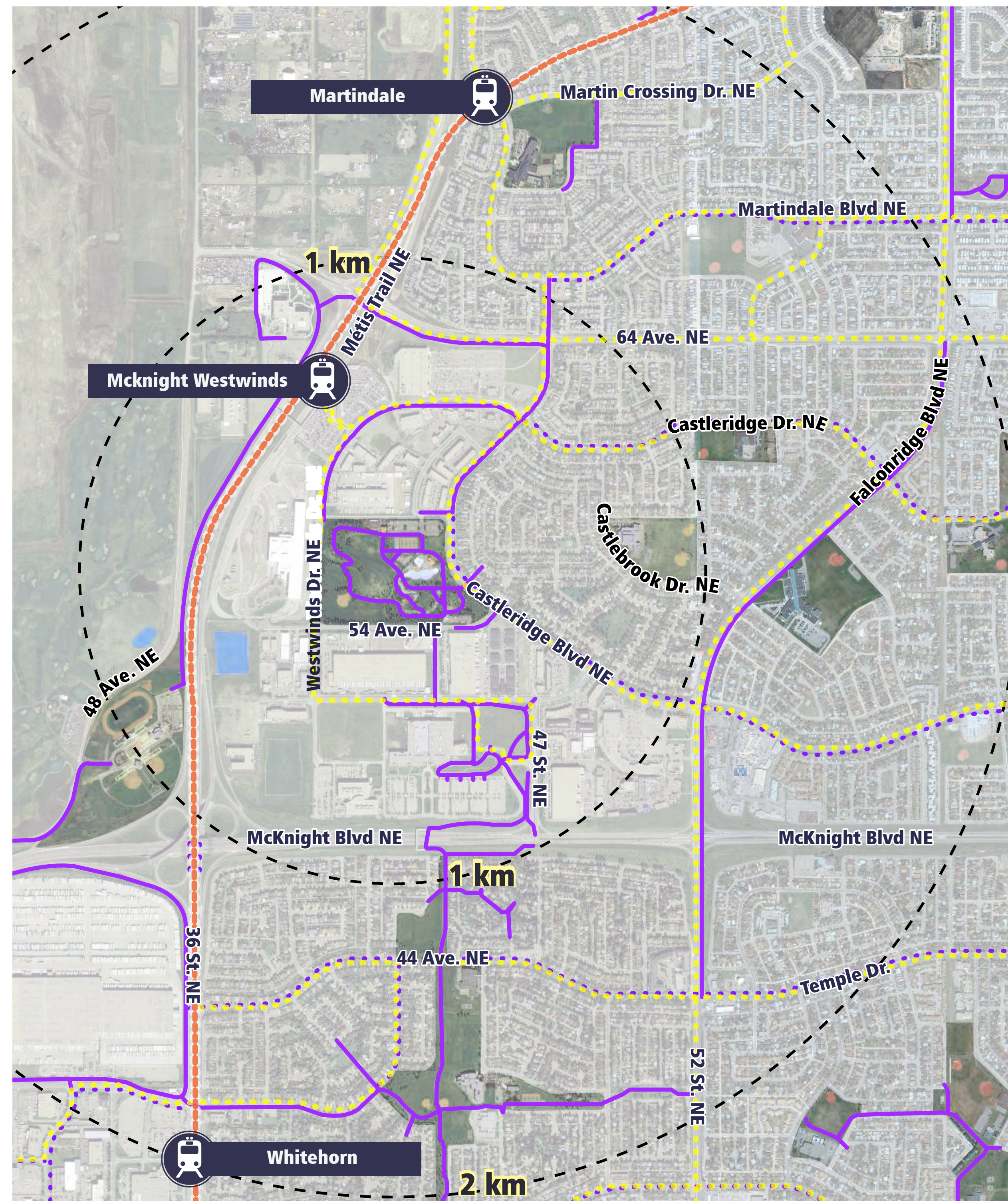
calgary.ca | contact 311



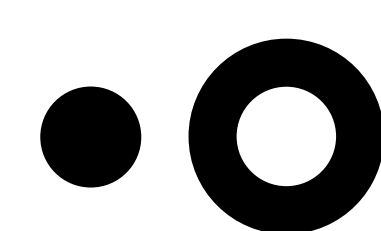
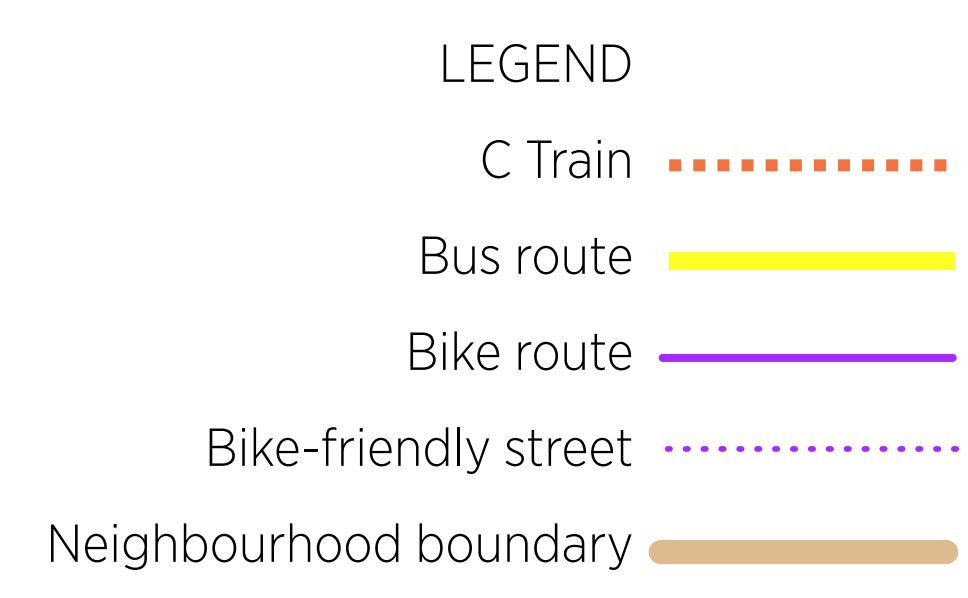


Nearby Recreation

LOCATION	DISTANCE FROM PRAIRIE WINDS PARK	Indoor swimming	Outdoor pool / spray park	off-leash dog area	Tennis court	Ice skating	Baseball	Tobogganing	Play area	Covered picnic shelter
Prairie Winds Park	0 km	●								
OS Geiger Elementary	1 km					●				
Calgary Rotary Challenger Park	1 km					●				
Whitlow Park	1 km									
St John Paul II School	1 km					●			●	
Silverwing Links Golf Course	1.5 km									
Bishop McNally High School	1.5 km					●				
Martindale Park	1.5 km								●	
Annie Gale School	2 km			●						
Terry Fox Junior High School / Falshire Park	2 km					●			●	
Falconridge School	2 km					●				
Grant MacEwan Elementary	2 km								●	
Guy Weadick Elementary School	2.5 km					●			●	
John XXIII School	2.5 km					●			●	
Templegreen Park	2.5 km			●		●				
Genesis Centre	2.5 km	●								
Falconridge Off-Leash Area	2.5 km			●						
Our Lady of Fatima	3 km					●			●	
Monsignor A.J. Heatherington Elementary	3 km								●	
Rundlelawn Park	3 km					●			●	
Pineridge Park	3 km					●				
Annie Foote School	3 km					●			●	
Taradale School	3 km					●				
Saint Rose of Lima School	3 km			●		●				
Lester B. Pearson High School	3 km									
Tarlington Woods Park	3.5 km			●		●			●	
Taralake Park	3.5 km								●	
Ted Harrison School	3.5 km					●				
Clarence Sansom School	3.5 km					●			●	
Rundle School	3.5 km					●	●		●	
Pinecliff Park	4 km								●	
Pineridge Community School	4 km					●			●	
Monterey Park School	4 km			●				●		

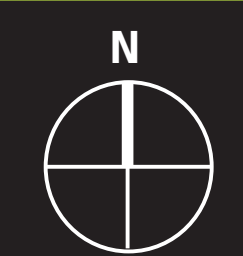


Transit and Bicycle Routes



space2place

calgary.ca | contact 311



## Trees and vegetation

**Condition:** Plant health varies. Not much variety in types (species) of trees.

**Recommendation:** Identify and replace selected trees with different species to add more variety. A wider variety of tree species helps to improve the overall health of all plants by making them less likely to be damaged by disease.

## Paved paths

**Condition:** Fair. Many paths are too steep for some wheelchair users and the path is uneven in some spots.

**Recommendation:** Make it easier to get around by reducing the steepness of main paths and provide more walking loops to more areas of the park. Make sure pathways are in good condition.

## Grass fields

**Condition:** Good. Wet/muddy areas in low areas.

**Recommendation:** Improve drainage in low areas.

## Playground (north)

**Condition:** Fair to poor. Reaching the end of service life. Outdated equipment. Pea gravel is not wheelchair accessible.

**Recommendation:** Create a play area where everyone is welcome, make it bigger so children of all ages and ability can have fun and want to come back to play again

## Toboggan hill

**Condition:** Good. Goat trails (dirt paths) show that people like to walk directly to the top.

**Recommendation:** Keep hill. Add a direct path to the top and make sure changes don't make it difficult to mow or maintain the hill.

## Baseball diamond

**Condition:** Adequate for baseball and softball.

**Recommendation:** Consider if a ball diamond in this location is the best use of space based on having other ball diamonds nearby that can people can use instead.

## Parks maintenance yard

**Condition:** Building and yard in average condition. The number of operations staff who use the building exceeds building's capacity during the busy summer season.

**Recommendation:** Upgrade building interior. Consider a moderate expansion of yard in current location.

## Tennis courts

**Condition:** Poor. Surface is in bad condition and needs to be replaced.

**Recommendation:** Replace surface. Consider moving courts to another location in the park.

## Parking

**Condition:** Barely adequate for day-to-day use. Not enough spaces for large events.

**Recommendation:** Keep existing number of on-site parking spaces and provide more by allowing on-street parking to the south and west of the park.

## Skating rink

**Condition:** Melting ice creates flooding of nearby pathway and paved areas.

**Recommendation:** Upgrade drainage for skating rink.

## Park building

**Condition:** Average for its age.

**Recommendation:** Upgrade washrooms, change rooms, and entries so they work better in all seasons and are more user friendly.

## Spray park

**Condition:** Good. Rebuilt in 2014.

**Recommendation:** Keep new spray park.

## Wading pool

**Condition:** Poor. Nearing the end of service life and needs yearly repairs.

**Recommendation:** Replace wading pool.

## Playground (south)

**Condition:** Good. Basic play equipment. New rubber surface.

**Recommendation:** Keep or consider expansion.

## Soccer field

**Condition:** Adequate for recreational / minor soccer.

**Recommendation:** Keep the soccer field.

## Picnic shelter

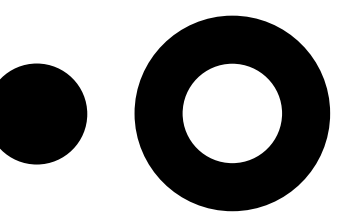
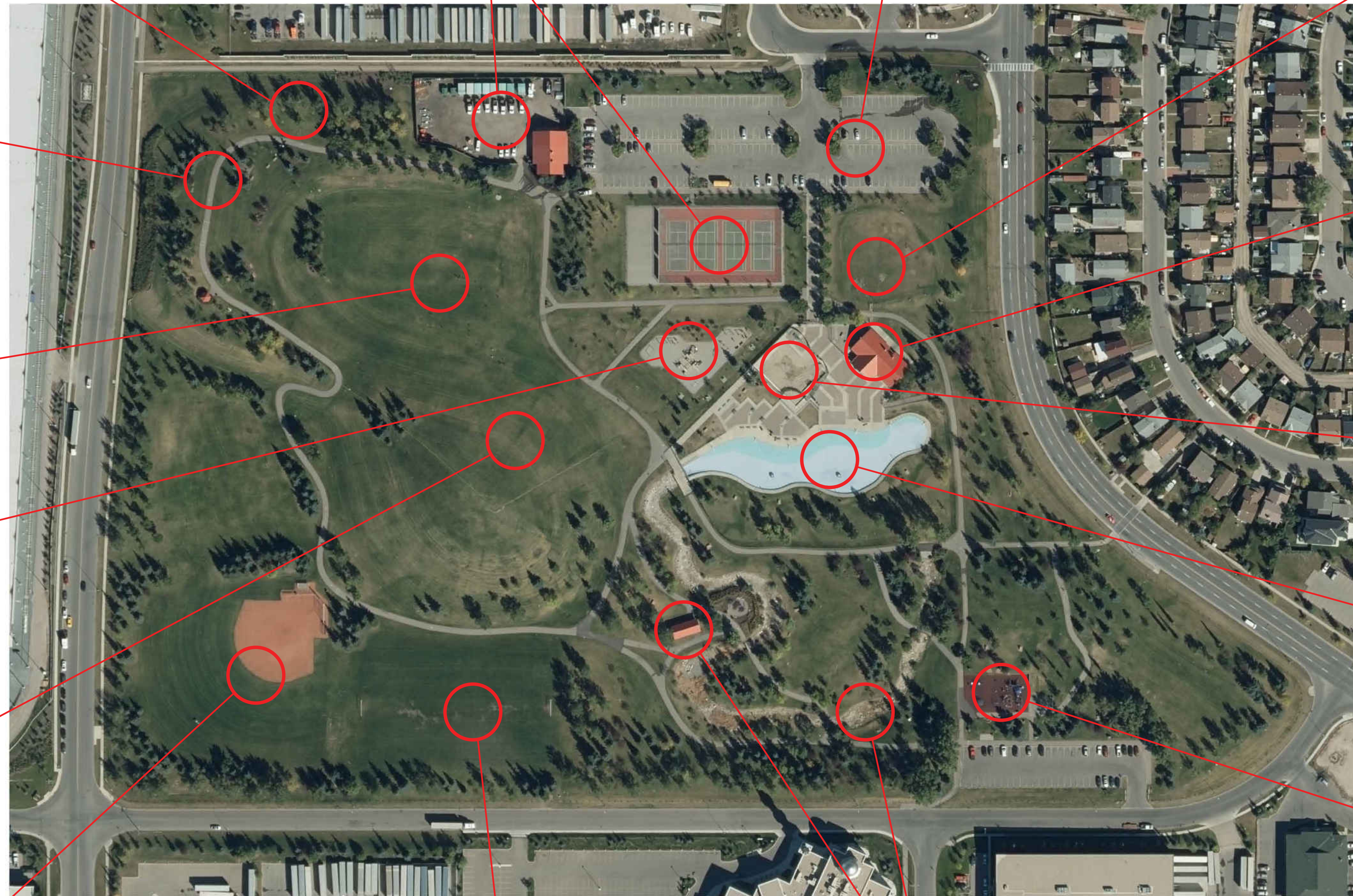
**Condition:** Average for its age.

**Recommendation:** Keep the shelter and consider adding more picnic shelters elsewhere in the park to serve more users.

## Artificial creek

**Condition:** Poor. Continual water leaks, repairs, and cost of water prevent its continued operation. Has been shut down for many years.

**Recommendation:** Remove creek and reclaim area for other park uses.



space2place

calgary.ca | contact 311

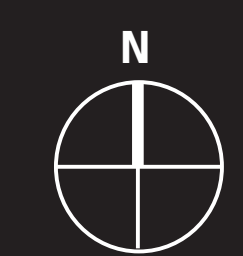
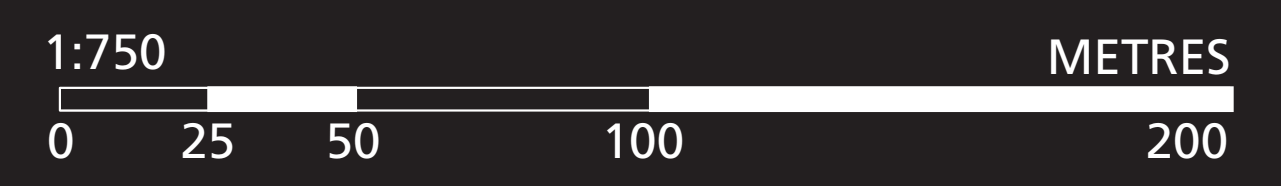






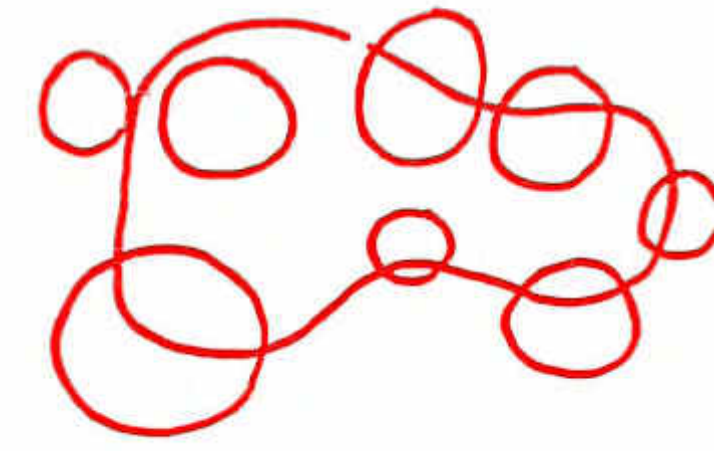
Prairie Winds Park  
**Concept 1 - Enhanced Existing**

Overview Plan 1



# Approach

Upgraded facilities are dispersed around the park and linked with a ribbon of paths.

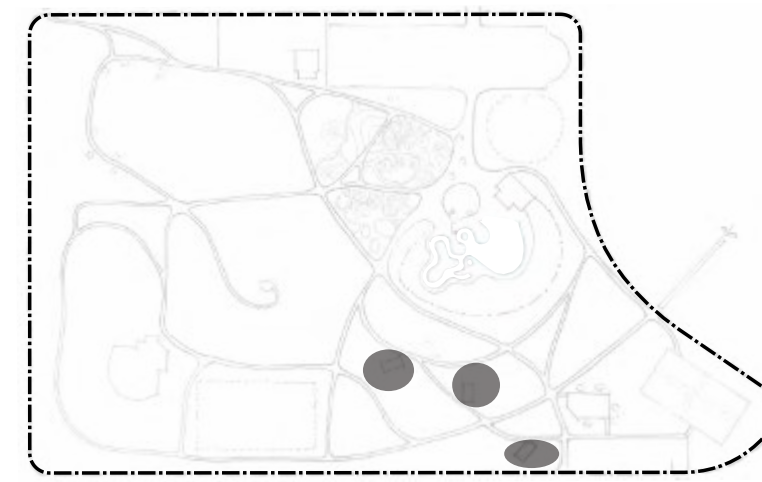


Features:

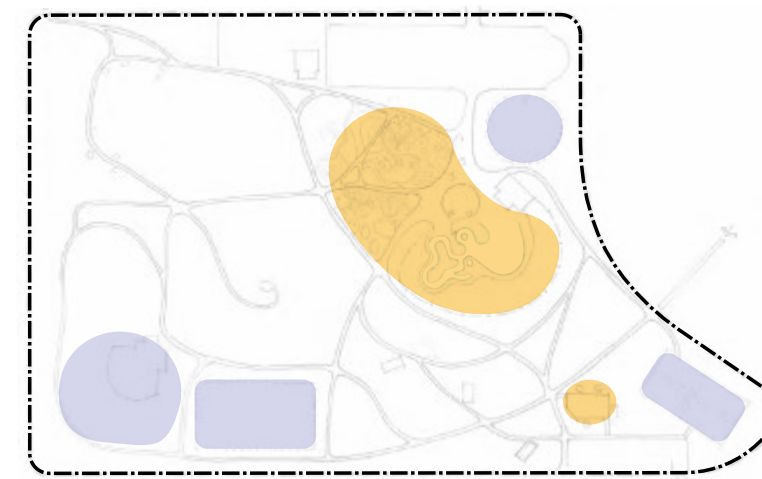
- Current park organization
- Renovated amenity building
- Wading pool with lazy river
- Relocated tennis courts (southeast)
- Larger play area



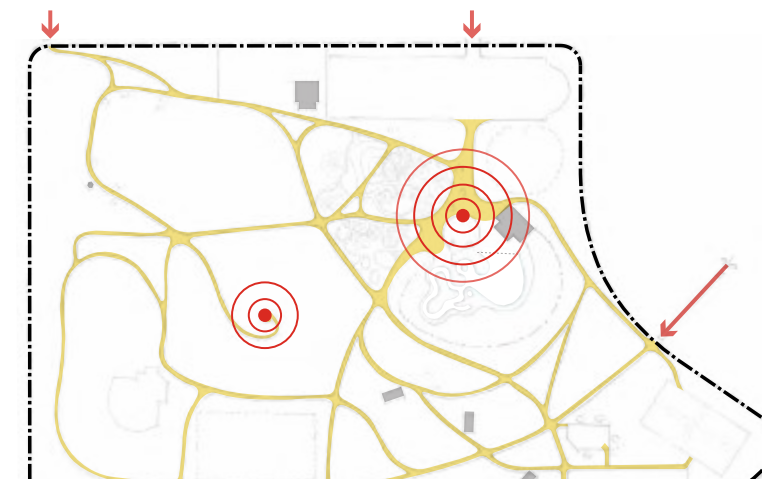
**Events**



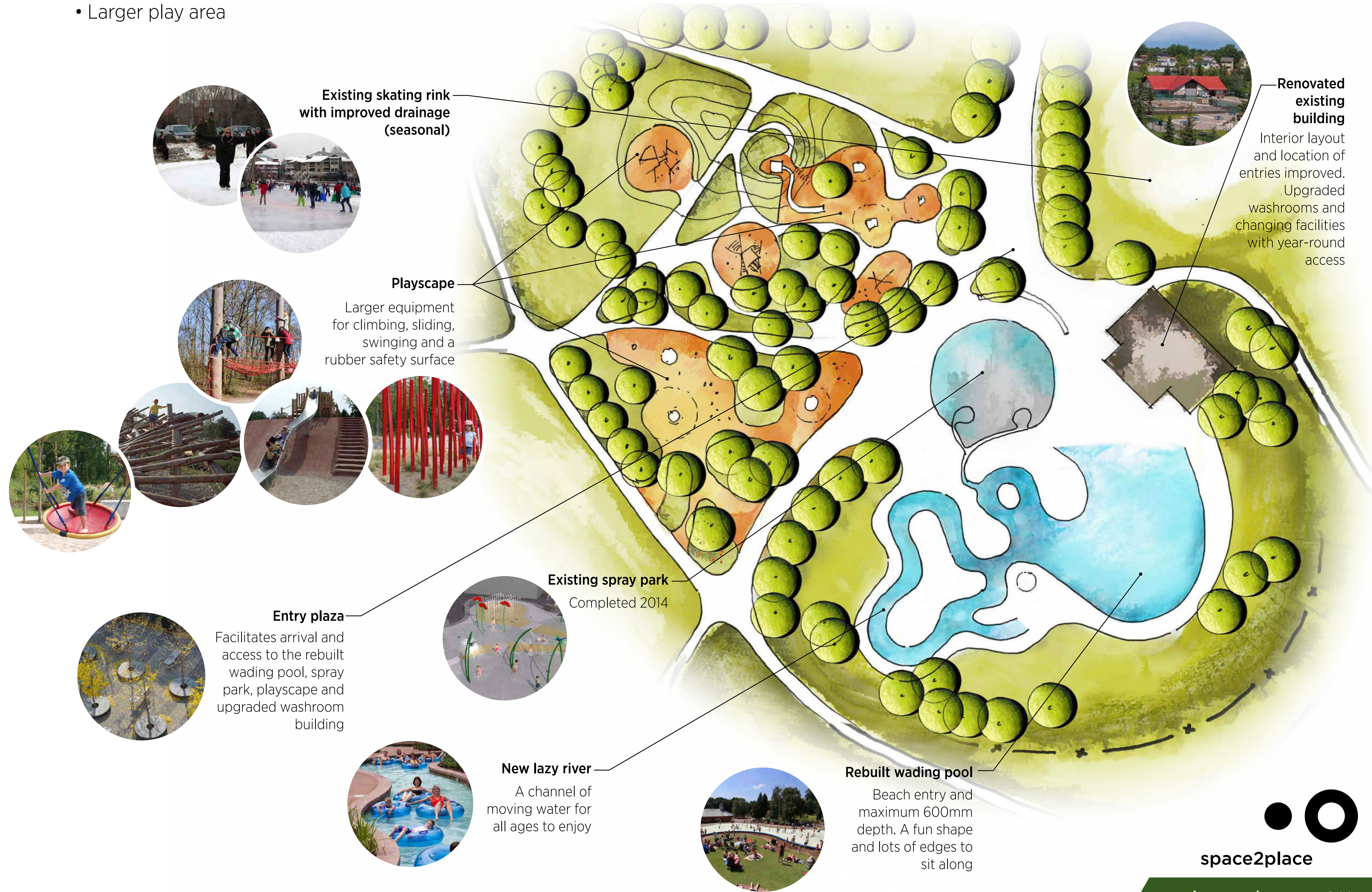
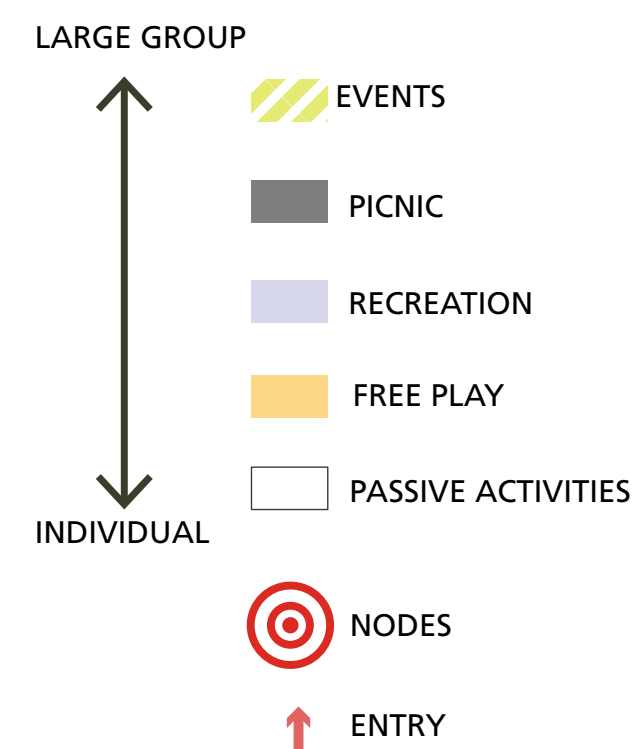
**Picnics**



**Recreation and Play**



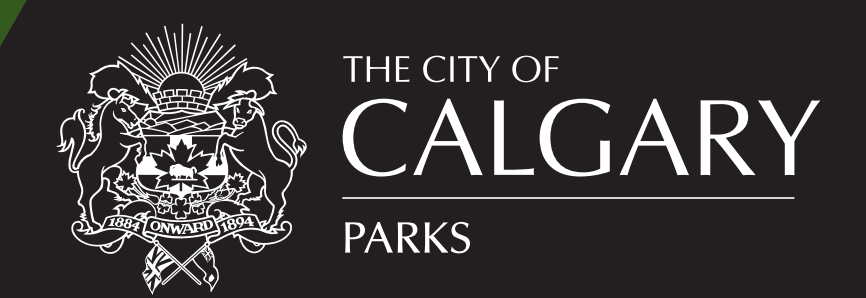
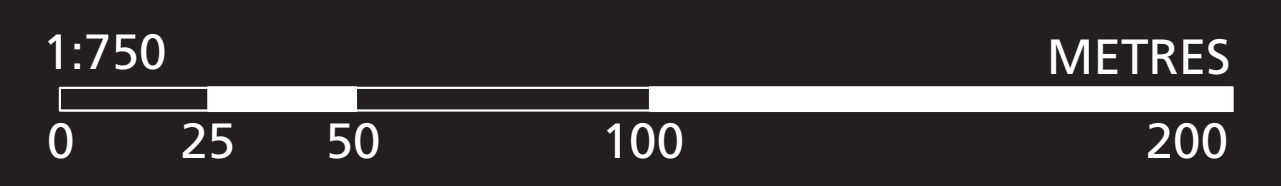
**Circulation and Nodes**





Prairie Winds Park  
**Concept 2 - Expanded Opportunities**

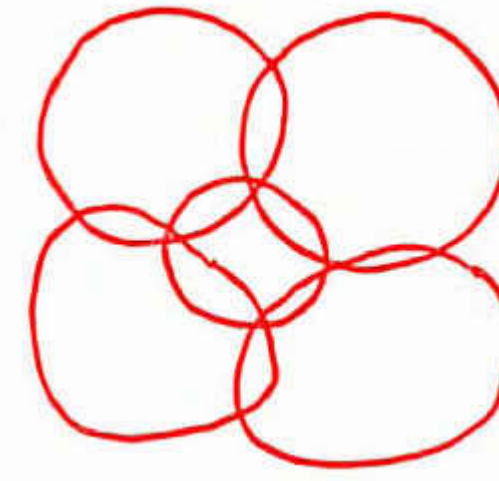
Overview Plan 2



calgary.ca | contact 311

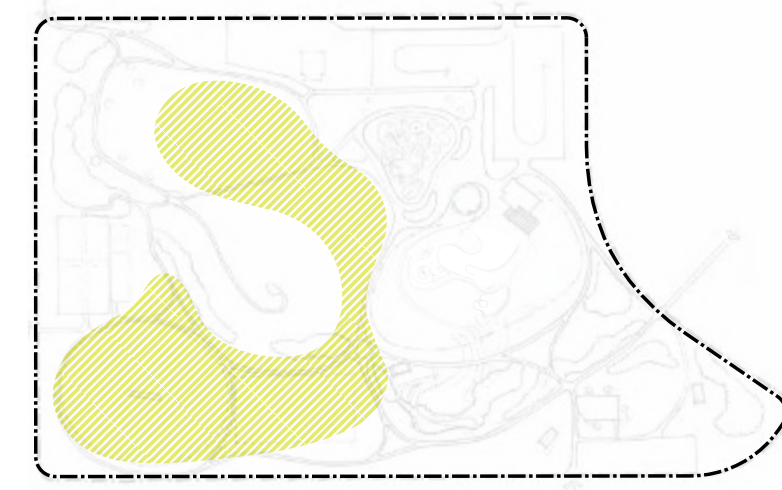
# Approach

Activities are grouped in four distinct zones, each with a clear focus: Athletics, Flexible Open Space, Family, and Passive Use.

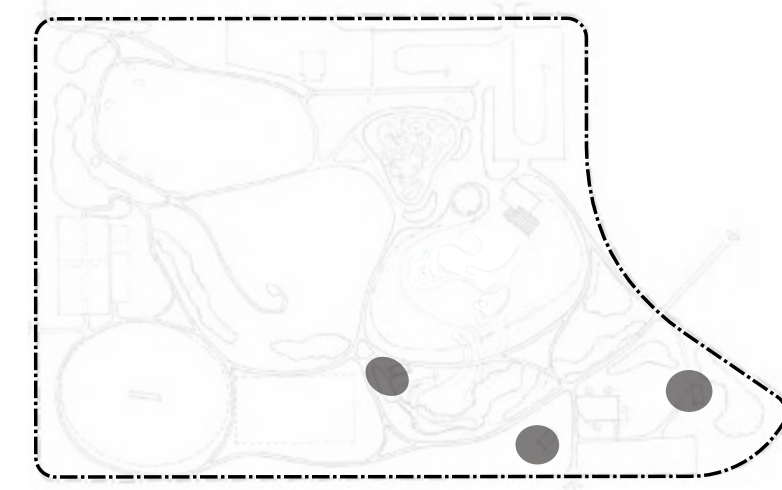


Features:

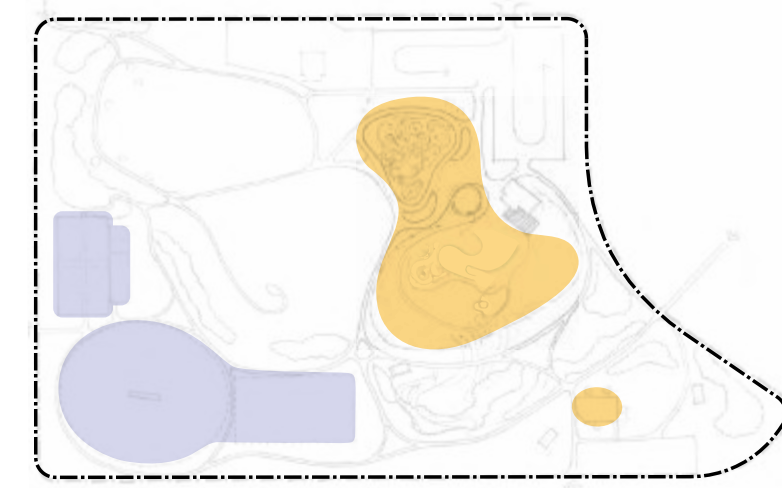
- Expanded amenity building
- Sport courts with basketball (west)
- Wading pool with water slide
- Ice skate path
- New cricket pitch
- Larger play area
- Tennis courts & hockey rink (west)



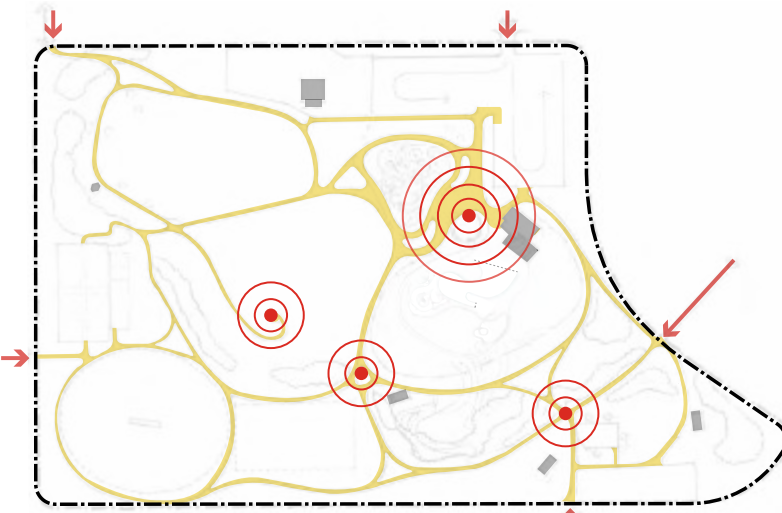
**Events**



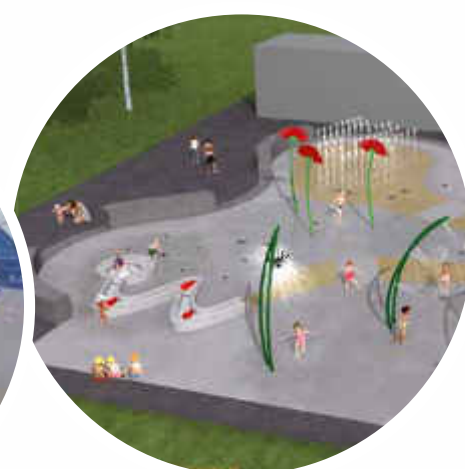
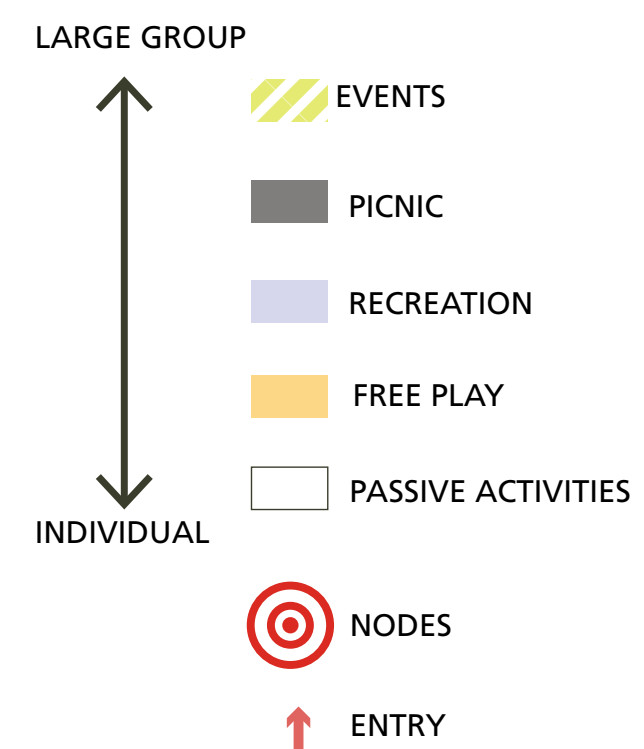
**Picnics**



**Recreation and Play**



**Circulation and Nodes**



**Playscape**

Using the space freed up by the relocated tennis courts, the larger play area is part of an expanded family zone

**Entry plaza**

Facilitates arrival and access to the rebuilt wading pool, spray park, playscape and amenity building

**Existing spray park**

Completed 2014. Additional water play elements added to the spray park improve integration with the new pool and water play area

**Rebuilt wading pool**

Beach entry and maximum 600mm depth. A fun shape with lots of edges to sit along and a cascading water feature

**Water play**

Water engineering feature that encourages cooperation and creativity to manipulate water along multiple channels

**Water slide**

Using the park's topography, an accessible path leads to the top of this fun attraction for all ages

**Skate Path (Seasonal)**

In winter the perimeter path around the playscape is flooded and frozen to become a unique loop for skating



**Renovated & expanded existing building**

With more space, improved interior layout, and upgraded washrooms and changing facilities



space2place

calgary.ca | contact 311



Improve connection with McKnight Westwinds CTrain Station



Retain Toboggan Hill

New Lookout Hilltop destination for enjoying views and watching planes



New skateboard park



New bike skills park



Existing soccer field



New Sport courts with Basketball



Relocated tennis courts / skating rink



New fitness stations throughout the park

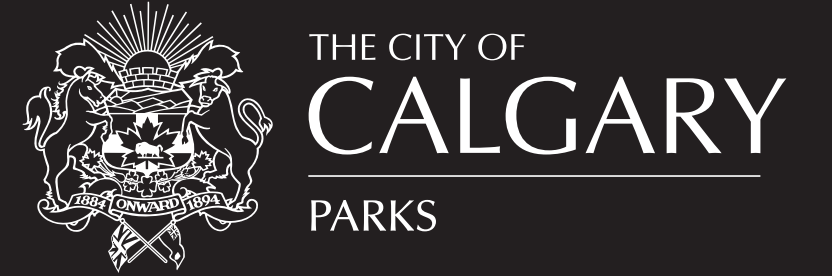
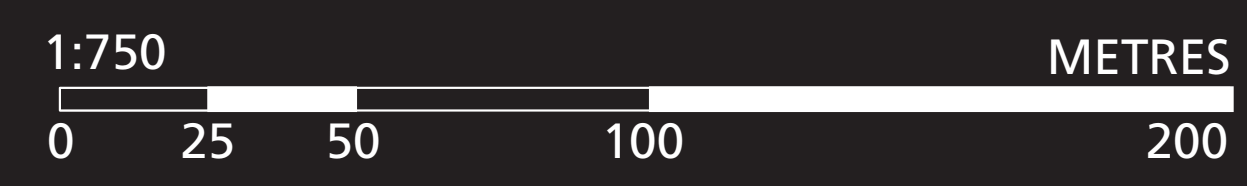


New picnic shelter



# Prairie Winds Park Concept 3 - Active Centre

Overview Plan 3

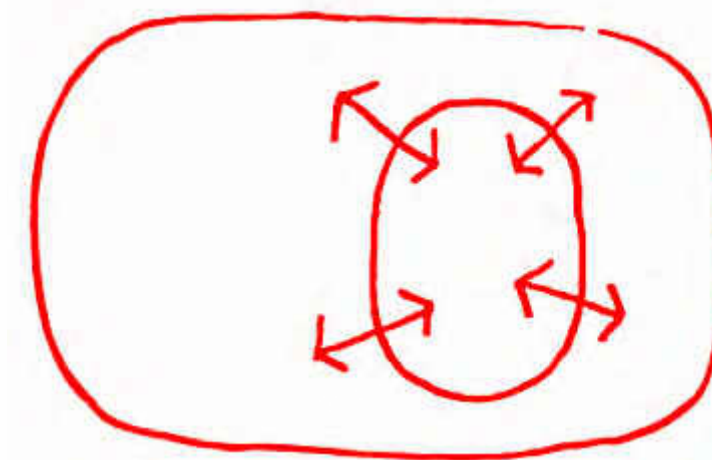


# Approach

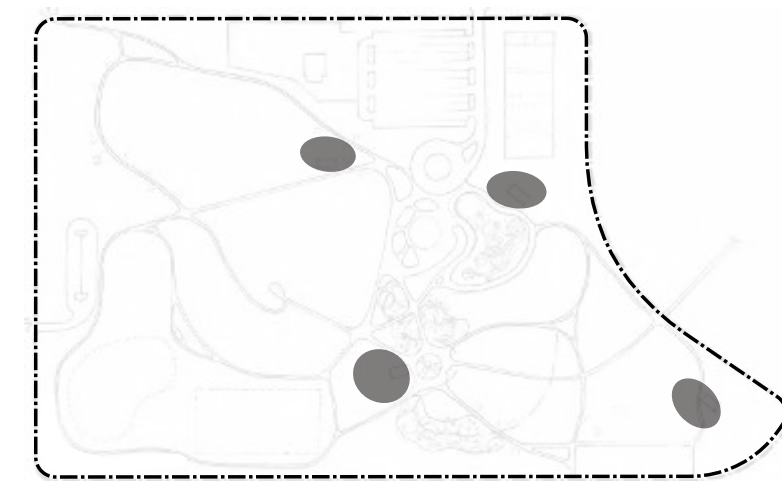
A vibrant public space in the centre of the park that integrates the park activities that surround it.

Features:

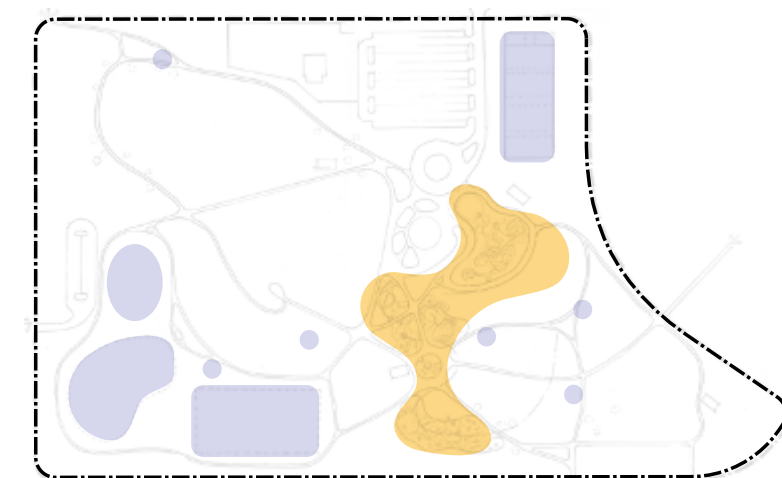
- New, central amenity building
- Large water play zone (no pool)
- Tennis courts & hockey rink (northeast)
- Sport courts with basketball (northeast)
- Skateboard park
- Bike skills park
- Ice skate path
- Fitness stations
- Multiple nature-based and integrated-play areas



**Events**



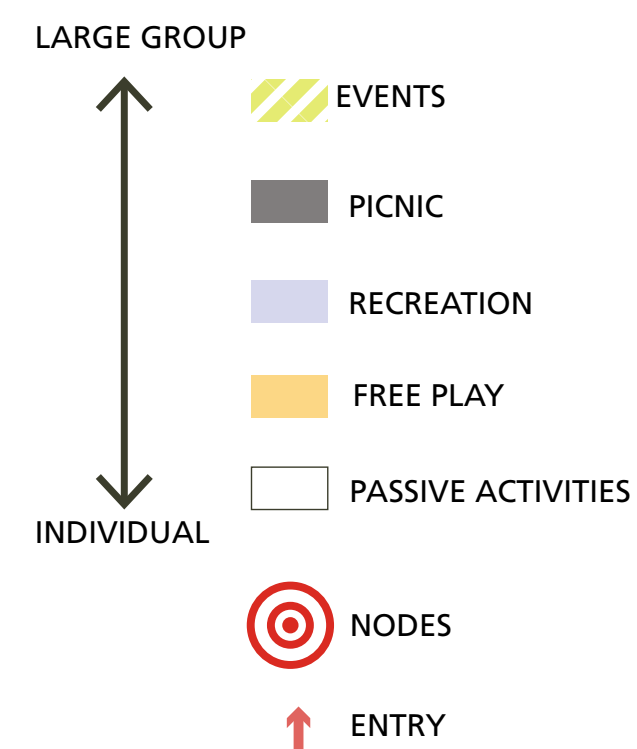
**Picnics**



**Recreation and Play**



**Circulation and Nodes**



**Expanded water play area**  
An exciting water play area that stimulates the imagination and encourages creativity and cooperation



**New stairs**  
A direct connection to the top of the hill



**New play areas**  
Play features integrated with topography along the former creek alignment



**New nature-based play**  
Using natural elements children are provided opportunities for open-ended play in a treed setting



**New plaza**

**New amenity building**  
Washrooms, change facilities and warmup space in a central location to serve all park users

**Drop-off loop**  
Formalized area for drop-off and pick-up adjacent to the arrival plaza



**New picnic shelter**



**Existing spray park**  
Completed 2014 Integrated with a significant new water play area

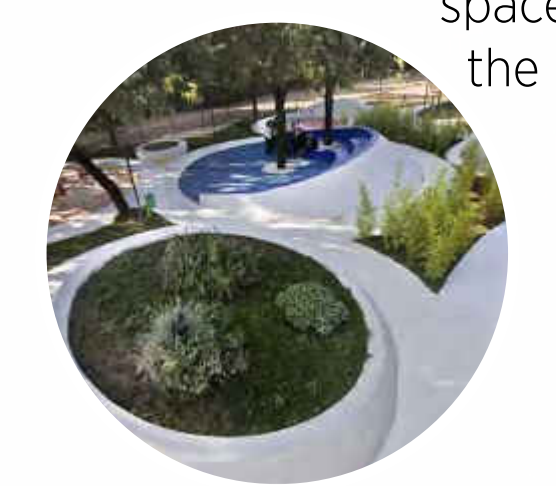


**Skate path (Seasonal)**  
In winter the perimeter path around the water play is flooded and frozen to become a unique loop for skating

**New fitness stations throughout the park**



**Existing picnic shelter**



**Play Plaza**  
A fun gathering space between the play areas



space2place

calgary.ca | contact 311

