



# Royal Avenue & 8 St Intersection Traffic Calming Pilot

Stakeholder Report Back: What we Heard/What we Did

February 2018

## Project overview

As part of the **Pedestrian Strategy** we are looking at ways to improve walking at intersections throughout Calgary. The intersection of Royal Avenue and 8 Street SW has been identified by community members as a difficult area for both drivers and pedestrians.

The offset driving lanes make it difficult for drivers to see pedestrians crossing the road and cause pedestrians to be in the intersection longer when crossing the road. Straightening the driving lanes and extending curbs makes it easier for drivers and pedestrians to see each other when travelling through the intersection.

We wanted to test out a low cost solution to address the issues that pedestrians and drivers are currently experiencing before constructing a permanent solution. Traffic calming curbs were used as they are easy to move around if design needed to be modified. The curb extensions make pedestrians more visible to drivers before they step onto the roadway. With the space created by the reconfiguration, we considered a variety of options that are designed to encourage people to use the space, such as pavement painting, benches and flower pots. When the final design is created we will work with you to identify the best way to use the space long-term.

## Engagement overview

For the duration of the pilot, from June 14, 2017 – September 22, 2017, The City of Calgary collected feedback both on site, with a community sounding board, and online through a feedback form and social mapping tool. Calgarians were asked to share their experiences using the temporary intersection redesign and their ideas for how to use the space between the sidewalk curbs and the traffic calming curbs.

## What we asked

1. The **community sounding board** asked, “using the markers provided, please answer the following questions:”
  - 1.1. What are some of your positive experiences with the new design? What is not working for you with the new design?
  - 1.2. What do you like about how the space between the sidewalk curbs and the temporary traffic calming curbs is being used? What else might be done in this space?
2. The **online feedback form** asked:
  - 2.1. How do you most often travel through the intersection?
  - 2.2. What are some of your positive experiences with the new design?
  - 2.3. What is not working for you with the new design?
  - 2.4. What do you like about how the space between the sidewalk curbs and the temporary traffic calming curbs is being used?
  - 2.5. What else might be done in the space between the sidewalk curbs and the temporary traffic calming curbs?
3. The **online social mapping tool** asked, “use a pin to show us a specific location you would like to comment on:”



# Royal Avenue & 8 St Intersection Traffic Calming Pilot

Stakeholder Report Back: What we Heard/What we Did

February 2018

3.1. Tell us what is working or not working about the design in that location. Tell us what you like about, or what else might be done in, the space between the sidewalk curbs and temporary curbs.

## What we heard, what we did

### About the intersection:

Although participants' views on the changes to the intersection were mixed, there was a general concern for speed of traffic and pedestrian safety. Many pedestrians felt they were safer crossing 8 ST S.W. with the changes. Several respondents commented that narrowing the intersection reduced vehicle speeds and the crossing distance, and that it was easier to see pedestrians waiting to cross.

However, other comments mentioned that the narrower intersection was creating congestion when vehicles were turning, and that there was not enough room now for vehicles and bikes to travel safely together on the road. A number of participants recommended changing the intersection to a traffic circle, or to consider bringing in an island to break up the long pedestrian crossing with some participants mentioning that there had been one previously.

Some participants expressed that they are now more comfortable driving through this intersection, and that it was easier to see people waiting to cross while others were concerned with cars sliding into the cement barriers in the wintertime. Some comments recommended installing pedestrian crossing lights. Participants mentioned the configuration of the pilot was confusing for drivers, pedestrians and cyclists. A number of comments mentioned that if made permanent, then more signage, or vertical markers that could be more easily seen, would make travelling through the intersection more comfortable and less "confusing for everyone".

What we heard	What we did
Pedestrian safety and traffic speed	Traffic calming projects are designed to slow down traffic to help ensure safety for people walking. The traffic calming curbs enable people walking to be more visible to people driving before crossing the street.
Concern that vehicle and bicycle traffic are too close  Bicycle efficiency – easier for east/west crossing but considered an obstacle when cycling uphill	The street width was designed to allow a vehicle and a person on a bike to travel side-by-side. However, based on what we heard, we understood that people may be driving too far to the right and not allowing space for a bicycle. Therefore, the City is considering a painted bicycle lane that clarifies where people driving and people biking should position themselves when passing through this intersection.



# Royal Avenue & 8 St Intersection Traffic Calming Pilot

Stakeholder Report Back: What we Heard/What we Did

February 2018

Concern for vehicles sliding in wintertime	Traffic calming measures are intended to reduce the speeds of people driving through the community and thereby reduce both collisions and the severity of collisions. Citizens are encouraged to report icy and slippery conditions via 311.
Consider a traffic circle as a possible solution	The grades are too steep here for a traffic circle, and the safety of people crossing would remain a concern.
Consider putting in an island or other infrastructure as a possible solution	The grades are too steep here for a pedestrian island, and there is not enough space within the cross-section.
Sidewalk ramps for ease of strollers	As part of the final design, new permanent wheelchair ramps will be installed to improve the movement of people who use mobility scooters, wheelchairs, strollers or children under the age of 14 on bicycles.
Consider putting in a 4-way stop	Traffic-control signs aren't intended to be used as traffic-calming devices. A warrant system is used to determine if there is enough traffic in both directions to justify a stop sign. In this case, the warrant would indicate that there is an insufficient balance of north-south and east-west traffic for a 4-way stop, which would lead to poor compliance and reduced safety.

## About the space created between the sidewalks and the temporary curbs:

Respondents commonly expressed concern that the installed artwork during the pilot was distracting and made it harder to navigate the intersection. While many commenters were pleased with the piano installed as part of the pilot, others highlighted that the piano was disruptive to neighbouring residents. There was also some concern over encouraging children to play so close to traffic.

Some respondents really liked that the art in the pilot showcased the work of local school kids, while others felt that if there is going to be art in this location permanently, it should be done by professionals. Respondents offered several other potential uses for this space. Static options included: seating, wider sidewalks and landscaping – grass and/or planters. Interactive features included: a little free library, community garden, a historical plaque and an area for community vendors to operate.

What we heard	What we did
<p>Concern that this area will attract undesirable activities like crime</p> <p>Child safety a concern if this is to be a play area</p>	<p>We will work closely with the community to develop a design that meets the community's needs as far as creating a passive or active space that feels safe and is visually connected to the surrounding community to reduce the likelihood of undesirable activities. By creating a walkable environment, more community</p>



# Royal Avenue & 8 St Intersection Traffic Calming Pilot

Stakeholder Report Back: What we Heard/What we Did

February 2018

<p>Consider neighbouring home owners and what they would like to see</p>	<p>residents will feel comfortable out and about in the community and contribute to the casual surveillance of public spaces.</p> <p>Because of drainage and water pooling concerns, the City is considering a design that incorporates a rain garden-type feature.</p> <p>We will work closely with the community to develop a design in collaboration that addresses concerns regarding this new public space.</p>
<p>Takes up parking space which is already an issue</p>	<p>A minimal amount of parking will be impacted by the final design. We will work with adjacent neighbours to try and accommodate parking where we are able to.</p>

▶ For a verbatim listing of all the input that was provided, please see the [Verbatim Responses](#) section.

## Next steps

Over the next several months the project team will work on revising the design from the pilot into a final design. The project team will share the final design with the Mount Royal Community Association and adjacent residents in the summer or fall of 2018. The final design will help guide future changes in the area. There is currently no funding available for the construction of the final design. It will be constructed as funds become available.



# Royal Avenue & 8 St Intersection Traffic Calming Pilot

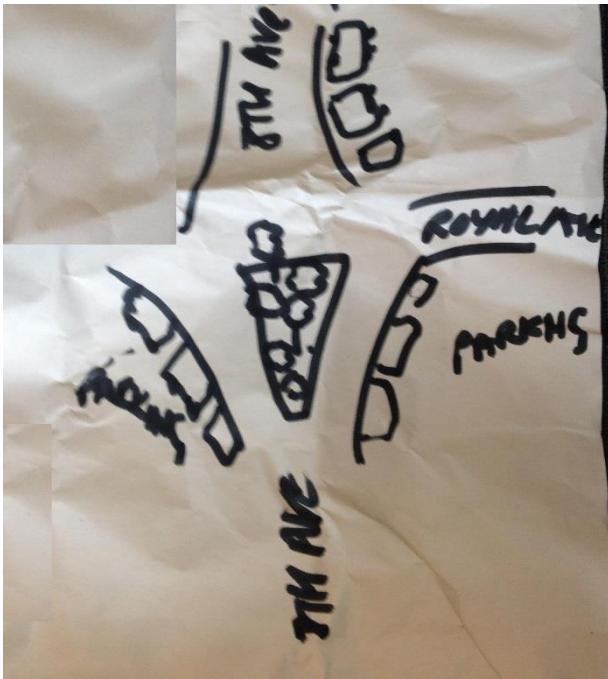
Stakeholder Report Back: What we Heard/What we Did  
February 2018

## Verbatim Comments

**Please note:** Personally identifying information, as well as portions of comments not in compliance with the City's Respectful Workplace policy have been removed from the participant-submitted comments that follow, the intent of the comment remains. Otherwise, content is captured as provided, no edits have been made.

### Community Sounding Board

#### 1) What are some of your positive experiences with the new design? What is not working for you with the new design?



- [Illegible] a traffic circle
- \*Distraction to drivers and cyclists\*
- Bikes, greenspace, interactive art
- Love it
- Unsafe and unsightly
- Srsly? (next to: "unsafe")
- Dangerous
- Love it
- I don't like it
- I can't believe that this is so close to my [illegible]
- We need more of this in Calgary, it's a great reminder that cars aren't the only thing passing through
- Yes! (next to: "We need more of this in Calgary, it's a great reminder that cars aren't the only thing passing through")
- Where do people park now?
- Traffic slows down making eastbound turns - I feel much safer crossing on foot
- Can see oncoming traffic from the stop line
- Bottlenecks bike route, forcing cyclists to share lane with cars
- Maybe bring it in a bit - but not all the way (next to: "Bottlenecks bike route, forcing cyclists to share lane with cars")
- Great idea, like to have it safer for pedestrians
- Dangerous cement blocks in winter time, buses and cars will be sliding into them
- But that's the point (next to: "Dangerous cement blocks in winter time, buses and cars will be sliding into them")
- 1890's look at history --> island
- No longer have to duck under this guy's untrimmed bushes
- We will have at least one car per day slamming into these cement blocks in the winter, anyone want to wager???
- Are you kidding!!!
- How did this get approved! No change to signs, parking, turn lane, stop signs 16' back from crosswalk



# Royal Avenue & 8 St Intersection Traffic Calming Pilot

Stakeholder Report Back: What we Heard/What we Did

February 2018

- Put in a traffic circle, look at old maps there was an island there!!! This is a stupid waste of time
- Traffic circle pl.!
- Love it
- Do not (Next to: "Love it")
- This doesn't address the issues with speed!
- It's so much better to cross
- ~~better~~ more dangerous (Next to: "It's so much better to cross")
- Art wins! (Next to: (It's ~~better~~ more dangerous to cross))
- Traffic circle please
- Need a roundabout
- No! (Next to: "Need a roundabout")
- Traffic circle with trees [omitted]
- Reduces crossing distances for my family and I <3
- Fix the sidewalks they are a mess
- Traffic circle would reduce speeding down the hill which is a major issue for pedestrians
- Very dangerous intersection, traffic circle required, speed limit of 40 Km/h down hill suggested
- Dangerous obstacle in winter!
- South crosswalk is dangerous
- People need to drive slower
- Why all this wasted construction when you can just break the long crosswalk with an island, problem solved
- Gives pedestrians a chance to get in clearer sight of drivers and less space to cross and therefore less chance of being hit
- More radar traps?
- Reduce speed limit?
- No!
- Use photo radar
- Use less radar traps
- Cyclists and cars can no longer share this road too close for comfort
- the traffic calming curves are too far out into street
- Traffic circle makes sense but doesn't address, then, how pedestrians would cross
- Put a roundabout in the middle...
- Dangerous in winter...yes when you are speeding
- Slow down!!!
- Roundabout
- Need a right-hand turn lane into Royal Avenue
- None. A complete waste of money for a "Arts" project
- Barricades are dangerous for motorists, cyclists and pedestrians. Use an island to break up the long crosswalk - problem solved cheap/simple
- The traffic calming curbs are too dangerous where they are for motorists and cyclists both on 8 St & Royal Ave. These calming curbs should be moved further up the hill (just north of Prospect Ave before cars start speeding . Nib the problem in the butt, not after they're already doing 60-70 km an hour.
- Or maybe create another 4-way stop between Hillcrest & Royal Ave to get traffic to slow down! Thx.
- Sacrifice everyone else for one person's gain! One [person] on [omitted] wants this and The City complied despite the area residents objections! Soley for [their] benefit of crossing Royal Ave a little easier why? Ask the residents of this intersection if they have problem crossing the road & most of the answer is NO waste of money [they] should use [another street] if [here] is a problem for [them].
- Cars are slowing down imo, crosswalk easier/safer, love it
- Side walk ramps help with strollers
- Crosswalk is easier
- Calming curb are too dangerous for cyclist in winter time
- I like it! I am a driver. I like being able to pull out a little further from Royal Ave into the intersection before turning left.





# Royal Avenue & 8 St Intersection Traffic Calming Pilot

Stakeholder Report Back: What we Heard/What we Did

February 2018

- Put in a 4-way stop, problem solved!
- More dangerous to cross now w/ skateboarder, cars and bicycles too close to cross, don't feel safe standing on the cement blocks
- Shorter to walk across
- Very difficult for motorists, cyclist & pedestrian
- It was fine before, but is worse now!
- Skateboarders haven't now, matter of time before someone gets hurt. The skateboarders' tricks are good though. 2nd Millennium Park in CowTown
- How about a roundabout/ rotunda
- Take away the dangerous blocks
- I feel less likely to be run over.
- Really? I've almost been run over 2x since thing change (Next to: "I feel less likely to be run over.")
- How about parking spaces?
- I use this crosswalk all the time because I feel safer
- :-)
- This is really improving the driving
- They look good but I'm not sure I understand them - maybe better signage
- Better than flat lines. Good for non-winter solution. Needed year-round.
- Where are the questions that ask what we don't like? Nothing to like right now!
- Still no sense that cars coming from the sides can see up or down hill any better.
- Great rest area for bottle pickers
- Move NE corner stop sign up to stop sign, add two parking spots in front of Tiffany
- Too narrow 8 St Nbound, especially at SE barrier
- Much safer for walkers
- I guarantee you this will make it troublesome for winter traffic - where's the sense.
- Caotic & confusing for everyone. It's a matter of time before a big accident.
- Feel much safer.
- Big improvement.
- Need another one or two vertical indicators on N.E. corner. Can't see yellow low curb when turning onto 8th from Royal. Several tire marks indicate problem. Otherwise good.
- An island to break up crosswalk would be a much safer & cheaper solution!

## 2) What do you like about how the space between the sidewalk curbs and the temporary traffic calming curbs is being used? What else might be done in this space?

- This is an eyesore
- Agree (next to: "this is an eyesore")
- More public spaces plz...pedestrians are people too
- Love this - love to see student art
- Flowers and planters would be nice instead of graffiti and junk art
- It's not graffiti
- Dumb to encourage kids to play on roads
- Agree (next to: "dumb to encourage kids to play on roads")
- Much safer on behalf of the children Thanks.
- This is an eyesore
- A green space with flowers
- I like it the piano works
- Dig up road and put in plants
- Scary mummies
- Sad that the piano doesn't work but otherwise I don't like it
- June 18: Piano works
- Thank you
- Piano works fine for an outdoor piano
- Please ask yourself if this is something you wish for in front of your home. Piano noise in the middle of the night and dummies on your trees, please ask yourselves that.



# Royal Avenue & 8 St Intersection Traffic Calming Pilot

Stakeholder Report Back: What we Heard/What we Did

February 2018

- Art and colour are welcome
- Put trees or bushes
- This is better. Art is by local students - nice to involve them!!!
- Garden pl.!
- Had a great jam session on piano and guitar!
- Awesome!! We live on Royal Ave and we need more public art like this :-)
- Agreed! (Next to: "Awesome!! We live on Royal Ave and we need more public art like this :-)")
- Rude idea (Next to: "Awesome!! We live on Royal Ave and we need more public art like this :-)")
- Art is fine
- I love it please make a permanent parklette
- Artwork is not appropriate for this area --> please replace with something more appealing/tasteful
- Agreed! (Next to: "Artwork is not appropriate for this area --> please replace with something more appealing/tasteful")
- Thank you looks inviting
- It's great seeing people and kids enjoying the new space
- Kids on road = dangerous (Next to: "It's great seeing people and kids enjoying the new space")
- The art is awesome what a joy
- Add greenspace around traffic circle
- Keep the piano, nothing else
- The piano is a brilliant idea!
- Bad idea (Next to: "The piano is a brilliant idea!")
- ~~Bad idea~~ --> brilliant idea (Next to: "The piano is a brilliant idea!")
- Let's put it in front of your house, eh? (Next to: "The piano is a brilliant idea")
- This is causing drivers to be distracted
- LOL (next to: "This is causing drivers to be distracted")
- No, your cell phones are (Next to: This is causing drivers to be distracted")
- People are slowing down to look because they're more curious, but now more distracted
- Why take down sculptures
- Alove these fun designs
- Love the bright colours
- They really have cool designs especially the piano
- Love this, need it in Sunnyside
- Sk8ing the curbs and playing piano. Feels safe
- Drug dealers will use the common areas to do their business, like 10 years ago
- Dummies are gone - now a sofa. What the ...!
- The city needs more art, keep up with the good ideas!!
- I love what you guys did with the space between the sidewalks - very creative!
- I think it's fabulous 'out of the box' thinking/design.
- Agreed. (Next to: "I think it's fabulous 'out of the box' thinking/design.")
- x2 (Next to: "Agreed. I think it's fabulous 'out of the box' thinking/design.")
- Maybe playing the piano at 2 AM will be good for you HA! (Next to: "x2. Agreed. I think it's fabulous 'out of the box' thinking/design.")
- x3 Ha! HA! (Next to: "Maybe playing the piano at 2 AM will be good for you HA! "x2. Agreed. I think it's fabulous 'out of the box' thinking/design.")
- Interesting. Kids will <3 it!
- I like it. It looks good.
- Please write down your address if you like this and we'll move the piano to the front of your house
- Area has become dumping ground for unwanted furniture - come on!
- Dangerous hang-out place when cars are going 50-70 km. (Too close to road to be anything useful
- Colourful, bright
- Everyday this makes me happy
- Invite lots of kids





# Royal Avenue & 8 St Intersection Traffic Calming Pilot

Stakeholder Report Back: What we Heard/What we Did  
February 2018

- Love the art and colours - Thank you City of Calgary
- So much fun!!
- Hideous!!!!
- Eyesore!!
- Maybe a professional could work on this.
- I love that kids designed this new park!
- Beautiful
- Thumbs up [drawn]
- This City makes poor design choices!!!
- I love it
- 2 thumbs up
- I love sidewalk
- Plant trees --> more green. Yellow thing look horrible + temporary
- I like this!
- No to trees, would block signals
- community garden (in planters)
- +1 (next to: community garden (in planters))
- good idea
- Parking - with a landscaped island in the middle
- This has become the off-leash area for all the irresponsible dog owners of upper/lower mount royal
- So not true!?! Dog owners and dogs wasn't a park with grass, not concrete (next to: This has become the off-leash area for all the irresponsible dog owners of upper/lower mount royal)
- Skateboard park for the kids - "great idea" so close to traffic
- tacky
- It's colourful and fun! - too close to the busy road
- I like it
- +1 (next to: I like it)
- Green space/ park
- Waste of space
- It is very ugly
- Grass
- Who encourages their child to play by the road?
- Love this!!
- Incredible place
- I love it
- Needs the piano!
- (in front of your place?) please leave address then [re: Needs piano comments]
- Need piano

## Online Feedback Form

### 1. I most often travel through the intersection by:

Walking	Driving	Cycling	Using other active modes (e.g.: Skateboard, Rollerblades, etc..)	Using assistive mobility devices (e.g. Wheelchair, Cane, etc..)
48	83	29	1	0

### 2. What are some of your positive experiences with the new design?

- pavement markings
- Tighter lane widths, slower speed less confusion for road users. This safety improvement is a winner.
- Safer pedestrian crossings. I'm more visible. Narrower roadways reduces speeds. More manageable intersection.
- Maybe the new road furniture will slow down motor vehicles.



# Royal Avenue & 8 St Intersection Traffic Calming Pilot

Stakeholder Report Back: What we Heard/What we Did

February 2018

- Definitely easier to see pedestrians earlier if you're going down the hill on 8th. Also, it's easy to see the blocks, which is great.
- At least people have a better idea on how to get through this massive intersection
- None.
- None
- I like that it is safer for pedestrians and slims the road. It is way too wide and unsafe.
- None
- There are no positives with the new design. I live in the area and have never had an issue either driving across the intersection, or walking across it. The speed limit is already 40km in that area of 8 St, and traffic calming circles are already in place on Royal Ave, and I don't ever see vehicles speeding through. If speeding is the issue, perhaps a blitz of photo radar in the area would assist in calming further. It would also make sense to install a pedestrian crossing light.
- Love the way the community and young people have taken over the space. Public art by the public. Great work!
- I live [omitted]. Sorry, no positives. But, if seeking to 'calm' traffic, add art that is peaceful and beautiful but invisible (if you know what I mean), not alarming, distracting, and confusing. All eyes on road please! Watch for pedestrians and cyclists!!! I am a former teacher . . . so all up for engaging students in 'real' work. But, consideration should have been given to not producing distracting art. I think they missed the point.
- None. I feel for the owners of the apartment house on the corner of 8th Street and Royal as well as the home owners. This is over kill for one problem and that problem was pedestrians where a much easier solution was available.
- AWESOME, slows down the cars, interesting and hip, locally created, what and how all such developments should be.
- None
- Shorter pedestrian movements. Might this not be the ONLY intersection on Royal Ave that has sufficient space for a bona fide traffic circle (I don't see the slope as an issue)?
- nothing
- I definitely like the traffic calming curbs to better define this intersection. I also like the idea of displaying flowerbeds.
- Great idea but poor design. The purpose of the project is to slow down traffic and make the area safe for pedestrians. I drove past the area and saw children playing in the decorated area. By. Rearing this play area you have placed people (adults and children) next to a known high hazard area. The only protection from traffic was a curb. Please contact your HSE department and consider installing barriers that could protect people from vehicles.
- None yet.
- The curbs and extended areas work well to more easily navigate the intersection and also encourages pedestrian safety. The paint on the asphalt is cute/acceptable.
- I value the effort to investigate and determine the limitations to this intersection...
- Allows drivers to reduce speeds and obey 40 km/hr speed limit.
- Ugly! Waist of money! Use the money to reserves 8 Street and Mount Royal. 8 Street is full of dangerous pot holes!. [Omitted]
- None
- None
- Love the better seaign and the art collab is fantastic!! So much better than looking at pilons. The piano is terrific.
- I think the city should do more, like this, to give kids the opportunity to get involved. I love the temporary art initiative.
- The traffic calming measures are a vital need here. Mt Royal roads/community was never designed to take as much traffic as today. I



# Royal Avenue & 8 St Intersection Traffic Calming Pilot

Stakeholder Report Back: What we Heard/What we Did

February 2018

find the refined intersection acts as reminder and helps drivers to calibrate their speed as well as provide safety to pedestrians. In the final design I think threes/green space that fits/connects with the remaining character of the community would make the traffic calming more fluid with the rest of the neighbourhood and blend in.

- So nice to see something down to help start the slowing of traffic through this residential neighbourhood. I have two small children and often go for walks through the area and I did this interesting just terrible. Now with some improvements it is so much nicer to go for walks.
- It really made me slow down while driving, acutely aware of the crosswalk lines. Felt safer while walking across the intersections subsequently.
- Easy to navigate, the public art space is lovely. Thank you for adding some local flair to the neighbourhood while making the intersection safer for citizens.
- Less complicated crossing by adding the south crosswalk as it connects existing sidewalks where a connection didn't exist. Narrower minimizes the car activity as the intersection was acting as a informal four way N/S and four way E/W making it difficult to predict driver behaviour. Speed initially dropped but my sense is that it creeping back up as people become familiar with the street scale.
- I think it is a great way of bringing positive change to the downtown core. Study after study has been conducted on the effects that poor urban design has on the mental health of city residents. I think this project really helps in diversifying the urban landscape. This project reminds me of the many projects that were done in New York City to better manage traffic. An individual you should research is Janet Sadiq Khan, who gives many examples of these types of projects in her book "Streetfight"
- I am not as nervous driving through that intersection. I always check two or three times that no pedestrians are crossing but there have been close calls with cars going around me or turning onto 8th from Royal.
- Makes it much easier to navigate both on foot and by car. Love the piano!
- I really enjoy stopping and looking at all of the artwork. It is a bit easier to have visibility when crossing.
- narrower street makes it easier to see the surrounding
- none, there didn't seem to be a problem to start with. I have been using this intersection at least twice daily for 35 years, 12 years as an east-west driver on Royal Ave, and 23 years as a north-south driver on 8th Street
- The design makes it much easier to cross the street. It also gives the intersection a more inviting and attractive look.
- The path through the intersection is much clearer and direct.  
I like the artwork.
- I love how it makes drivers slow down and negotiate with others at the intersection — a great improvement
- It's effectively slowing down traffic while providing better sightlines for the vehicles trying to cross or turn onto 8th Street. It is also much easier to see the people on the west side trying to cross 8th ST
- It's easier to cross 8 street to get to Royal.
- I love that it adds some character to the intersection. The use of colour is great. I also like that it extends the curbs so that cars drive more slowly through the area. Feels much safer!
- crossing the street is somewhat safer, but an island to break up the crosswalk into two sections could be a more cost effective method and more eye pleasing.
- There are none. I walk my dog across 8th Street and Royal Avenue 4-6 times a day.



# Royal Avenue & 8 St Intersection Traffic Calming Pilot

Stakeholder Report Back: What we Heard/What we Did

February 2018

Like any intersection you have to be alert and aware of your surroundings. Cars often do not stop and this new design has made no change.

- As a pedestrian, crosswalks are now shorter, making them easier to cross.  
As a driver, it is now easier to approach the intersection when going westbound on Royal Ave. There is no difference approaching the intersection in the other 3 directions.  
The plants are nice.
- The colors used on the group are pretty.
- Haven't had any positive experiences
- Re-use of over-the-counter pavement. The roadway is far too wide here.
- N/A
- Doing a left hand turn when heading westbound works better because I can advance into the effective flow of traffic.
- The walking/cycling crossing distances are shorter. As a pedestrian or cyclist it makes me more visible to vehicles.
- There is nothing positive about this project!! I live [omitted]. It looks terrible !!!!  
I hope it gets removed, it causes traffic congestion.
- Reduced distance for pedestrians is good and hoping the tighter configuration will slow down traffic
- Like the narrower intersection.
- Very few. Does anyone have any real evidence (not subjective or qualitative) that traffic calming even works over a long term? I'd like to see an empirical study.
- Nothing
- It feels much safer to cross the intersection as a driver on Royal ave and as a pedestrian crossing 8th street. The distances are more reasonable and lines of sight are better. The additional cross walk on the south side is also very much needed.
- Zero. If you need to modify the intersection great but a piano used painted tires and

plastic bubble wrap mannequins taped to trees is ridiculous. [omitted]

- None
- makes it clearer where cars and people are supposed to be  
makes it safer for pedestrians as it reduces their amount of exposure to cars and their being run down  
I never used to walk across 8th at Royal as it was too dangerous; now I feel like I won't have to avoid that intersection in the future also safer for cars now
- none
- Your objective of straightening the lane has worked but has since caused other problems as traffic backing up on Royal that is heading West
- It is much easier to see where other cars are supposed to be and where pedestrians are supposed to be. The view lines are better, because you know how far you can move out into the intersection and not be inside the intersection. It was really hard before, since you had to look through tree branches, because you weren't sure how far into the intersection you could safely go. Trimming the evergreen tree branches would really help too.
- I support the traffic calming measure but the aesthetics of the pilot are terrible. I hope that the permanent installation will have permanent curbs filled with landscaping such as grass and trees. I personally would not sit there but if a majority of people in the neighbourhood would like benches that would be ok.
- There are no positive experiences. Having said that, the art installation is 'cool' and tries to make something positively ugly interesting.
- the long crosswalk on North side of 8th street has shortened, but the same can be achieved by installing an island to break up this crosswalk into 2 sections



# Royal Avenue & 8 St Intersection Traffic Calming Pilot

Stakeholder Report Back: What we Heard/What we Did

February 2018

- It seems to be slowing cars down; now cars have to slow down to make the turn. The street feels much safer.
- I am not sure I find anything positive to note. Designs confusing and distracting and awful yellow disturbs the beauty of the lush and green neighbourhood. Artwork is lovely but should be in a public park, not in an area which distracts drivers from the road and sidewalks.
- The plastic people and the bright shapes are very eye catching. As a driver I slowed down, took notice of them which made me check for pedestrians even longer. As a cyclist/pedestrian I find that drivers are slowing down more and the change has really reduced the speeding and aggressive/reactive driving in the intersection.
- Much better sight lines up and down 8th Street when turning from Royal Avenue. Much more controlled navigation of the intersection, and more understandable. The old design left too much space for turns, and no consistency of where turns were initiated.
- love the fun art
- the ability to be further out - more visibility - when crossing
- pedestrians have less distance to travel between corners, making them more visible as they are immediately in a driver's field of view stops vehicles from coming up the inside lane to continue North/Southbound traffic\*
- Short crossing distances, no longer feels like a chasm or that you can never get a sightline to the south to see if someone is coming down the hill.
- It's now easier to cross 8th st on the North side of the intersection.
- safer to cross 8th street now
- Art work is neat, but I wonder how the home owners feel about them in front of their homes
- It's a step in the right direction. A long way to go to really improve the intersection but a step in the right direction. Shortening crossings is great start but doesn't look at much beyond reclaiming the most safe/unused pavement without touching the intersection.
- As an artist and resident of [omitted], I like the idea of some good design and colour to our city streets.  
However:  
Why is the city picking on Royal Ave? In three blocks [there is] a four-way stop, two traffic circles with overgrown, uncared for plants and now this abomination to drive around, everyday!  
Royal Ave was a nice quite street when Fifth Street was one way. Perhaps something to stop people from using it as "17 A" would be more helpful.
- I think the road surface should be reduced to slow traffic and make it a safer crossing experience for pedestrians.
- Well. It attracts attention.
- Crosswalk is much shorter so crossing is easier. Used to cross in the middle of the road instead to avoid cars.  
Easier to bike across east west because the distance needed to go is shorter and traffic seems to be slower  
I do drive walk and cycle through this intersection almost daily and I think these curbs are a good compromise. I walk mostly though I guess
- It's distracting and dumb.
- None. It's atrocious.
- None. It's an unneeded eyesore. Can't people just cross at 19th Avenue?
- This is a long-needed modification. I was cycling north on 8th once and very narrowly missed being hit and no doubt seriously injured if not killed by a driver who said they didn't see me. I also love the whimsy and



# Royal Avenue & 8 St Intersection Traffic Calming Pilot

Stakeholder Report Back: What we Heard/What we Did

February 2018

uniqueness of the current art installations, although I wonder if they distract drivers.

- It is sort of cute to have a piano in the road, but runs the risk of looking tacky or junky if neglected.
- I reside in the neighborhood in close proximity to the redesign. While an improvement, it does not address the main issue, namely speed and traffic volumes on 8th street. The art project was nice but has been scaled back. Going forward appropriate art for the community should be considered.
- Horrible. I have seen the painted tires you have out as "art", rolled down the hill into vehicles. My jeep has been hit twice and has huge lime green paint and scratches on it now. [omitted]
- Better view of drivers
- Lanes are more clear. Keep the art!
- Sadly, I never got to play the Street Piano, but other than that, this intersection is fantastic now and a joy to walk through. Send my thanks [omitted] for those simple (yet genius) traffic calming curbs.

- Helps narrow the east-west roadway so drivers and people can see each other sooner
- I have fewer near-misses now that I can see traffic in all four directions.
- It does give less area for hard roads surface, which far too extensive in this junction, and more for pedestrians.
- NONE - this is a disaster - it does not flow at all - very disruptive - when did this city become a nanny state?
- Nice tighter road design is working to make people more visible. I feel safer as a regular walker.
- If no traffic lights, then it's a good solution. I feel much safer crossing the Royal Ave corner, onto & from 8th St. I am more noticeable to drivers in that designated crosswalk zone. The yellow calming curbs make cars & bicycles slow down, instead of speeding around the corner onto Royal Ave and cars now have to slow down before turning right onto 8th St. [Omitted] and the Project is a great improvement. The Stop Sign that was there before was literally ignored by drivers.

### 3. What is not working for you with the new design?

- temporary curbs are ugly, more refined design better approach
- Should be permanent. That's the only way to improve on this stellar improvement.
- Intersection still oversized. Bike lanes in the shoulder space should be formalised between 17 Av up the hill. Effectively zero parking demand from Royal Av up the hill and only a few spots removed below. Cycling demand is high.
- May reduce the space I have for biking.
- The stop line for cars heading west on Royal Ave seems pretty far back. Given the speed with which cars can come down the hill on 8th, you sometimes need to accelerate quite quickly to turn right onto 8th if you don't want

to disrupt the flow of traffic. Hard to concentrate on pedestrians when you're trying that hard to get out of the way of oncoming traffic.

- it was better before just needs to be marked properly like it is now. crossing 8th, if you scoot out to where the lane actually begins it cuts off the distance by a large margin, making it an easy straight forward intersection, all this change was unneeded
- it reduces visibility for the drivers since it doesn't help drivers see around corners. It impedes their travel as the cars are still coming out at the same speed and the pedestrians are having more confidence when crossing the road. I have witnessed 3 almost accidents from [omitted] since the new set up





# Royal Avenue & 8 St Intersection Traffic Calming Pilot

Stakeholder Report Back: What we Heard/What we Did

February 2018

was put in place. The Royal Ave west side median makes it impossible for cars to stop. It is also [makes access to those houses harder]

- The curbs come out too far when turning from Royal avenue going west onto 8th Street SW. You are in the intersection by the time you can see around the corner instead of before where you eased into it. I find the new corner more dangerous than it ever was before and the way that the blocks are is very confusing. I hate it.
- It was good before
- Makes it harder for pedestrians to get across. The so called public art is [unattractive]. The curbs On the eastern side heading north are forcing cars into the on coming lane on a regular basis.
- Nothing, just make it permanent.
- It's already congested at the intersection with people going east and west. The new design has made the area smaller for vehicles to pass through. When it snows, we won't be able to see where the yellow blocks are.
- The new design is not only an eyesore but also a safety hazard for pedestrians and vehicles. Pedestrians have to come out too far into the road to see if it's safe to cross, and to be visible for vehicles. Vehicles are stopped back too far to view the entire intersection, and the "art" clutters and distracts. I'm not opposed to public art, but it needs to add to the space. Putting it in on an asphalt roadway is not adding to anything and is alienating people that might otherwise support art.
- More involvement in partnership with adjacent homes. May reduce some of their fears
- Royal will always be busy. [omitted] Keep as it was so that we can turn right while someone is trying to turn left. The art? People now dottle across intersection taking cell pics, forgetting it is actually an intersection. Art human figures confuses the eye into thinking

a pedestrian is there, when it is a weird blow up doll. Plus, one looks like it has been shot (red blotch on chest). Perfect opportunity for pranksters to have some fun with figures. More distraction.

- This solution and now with all the art designs is providing too much distraction and if someone is injured I would recommend that they sue the City for allowing this to happen.
- Love it the way it is
- All of it. Stop wasting money and put in speed bumps an cross walk lights. Solved.
- The temporary wood ramps seem surprisingly flimsy and prone to failure. While NOT part of the current project, I recommend that the easterly trees in the ornamental park on the NW corner of the intersection be removed. After about 25 years of growth, they are no longer visually permeable and screen pedestrians and drivers alike at this ped crossing (north side Royal Avenue travelling west to east). Significant legal exposure to the City that can be easily fixed. Replace with new columnars
- everything
- The blocking of this intersection makes turning more difficult. Winter will prove that this is another bad idea by the City.
- I am definitely not a fan of the chosen art and bright colours to help better display this area but knowing it is temporary and that it provided a wonderful opportunity for students to participate and contribute to a community project helps make it worthwhile! Art is very personal and always does create reaction.
- Creating a space that invites people into a high hazard area.
- The scattered, [omitted] 'artwork' is distracting and very dangerous. [It] also [negatively] effects property values. I feel sorry for my fellow neighbours who are trying to sell their homes right now. How would the



# Royal Avenue & 8 St Intersection Traffic Calming Pilot

Stakeholder Report Back: What we Heard/What we Did

February 2018

people who put this in or and whoever decided this was a great idea from the civil service side like this outside of their home? I guarantee you not one of you would like it...and would have it removed.

- The choice of art...Who want's to see plastic bodies with blood colored paint splattered on them? One even looks like gunshot wounds, which seems a bit offside [as it could be insensitive to those who have been victims of gunfire incidents]. Kids do not need to be seeing that.
- As a driver and pedestrian I use this intersection most days and in most directions. My initial feedback is less optimistic than I would have wished; it's now necessary to pull further out when approaching the junction on Royal Ave from the east, in order to turn either north or south.
- The art design/installation has been extremely distracting for drivers. I [omitted] have witnessed numerous drivers taking pictures while driving or waiting at the stop signs. In addition, as it is a newer concept, drivers are further distracted with the increase in pedestrians using the art in the space. It makes me nervous that this has been labelled a dangerous intersection and the art encourages young children to play within close proximity to the road.
- I liked the merge lane going from Royal ave onto 8st north it was safer. Now I feel I have to wing out into traffic and make an unsafe turn
- Unpleasant art work that distracts drivers and elimination of roadway.
- I would like to see more elevated awareness in the design such as trees to draw some attention to the drivers line of sight when approaching the calming curbs
- I'm happy with this intersection but I believe that at all points of entry into the neighbourhood there should be some signage

or something as people Treat it as a cut through and they speed. It's terribly unsafe.

- Needs more lighting or higher light levels at night.
- It should be narrower approaching the intersection and squared off at the curb. Drivers on Royal west turning north on 8th are still taking a sweeping turn without stopping and I have witnessed a situation where a man stepped out and an SUV driver looking left and not yielding, nearly hit him. Eliminate the "soft corners" to force the "stop". Will mention the stop sign at the same location is already run down and on the ground.
- I think as a former commuter I would still have supported this project. Please make sure that more of the intersections in our city are reconfigured in a similar way.
- I love it.
- There should be a pedestrian crossing sign as vehicles still take a while to notice when I am waiting to cross.
- i think there should be some more vertical sign posts to make it easier to see where the curbs extend farthest.
- I find I'm not used to the configuration yet and so it is all a bit confusing upon approach. I had a car from Royal Ave cross in front of me as I was travelling northbound on 8th Street, which I think may be confusion over whether it's a 4-way stop now. I also find the installation within the curbs to be very distracting as I'm driving through and trying to make sense of the new configuration.
- First, all the [omitted] stuff in the area is distracting and unsightly. Then the turn lane off 8th Street onto Royal Ave east and off Royal Ave onto 8th Street north were convenient and worked well and they're no longer there.
- There are still major barriers, particularly for strollers and wheelchairs. The stairs on the SW corner force people with strollers out onto the



# Royal Avenue & 8 St Intersection Traffic Calming Pilot

Stakeholder Report Back: What we Heard/What we Did

February 2018

street. However, if one tries to avoid the stairs by walking on the east side of 8th street, they will have to cross two awkward intersections with no curb cuts at Durham and Amherst. Thus, there is an incentive to jaywalk between Durham and Royal. Also, the sidewalks are extremely narrow. People are forced onto the street to get around each other.

- I look forward to depaving of the excessive asphalt and a permanent art installation
- It would be nice if there was a more obvious way for bikes and cars to know who is yielding right of way to whom.
- The saran wrap plastic people are distracting from the actual pedestrians on the road
- I don't know if the curbs are staying, but I think in winter when they are snow covered they might be hard to see.
- It should be permanent!
- dangerous cement blocks, especially in winter when cars and buses are sliding down 8st (northbound) sometimes sideways, loss of parking space. The cement blocks should be consulted with the transit department to see how comfortable their drivers are with it in Winter time.
- The hideous art is a big distraction and does nothing but take motorist's eyes off the road.
- It's ugly and cheapens the entire area. This type of "art" would make more sense in a more commercial area than a residential area.
- I recognize art is a point of view but the saran wrapped figurines are not appealing. They look cheap, will not weather well and one looks it has been shot or something as there is red blotches on it - not a great symbol for our city. I have to turn from Royal Avenue onto 8th and this has not lead to any improvement as I have to go fast to turn left before incoming traffic (which is not viewable until it is almost too close). In the winter this can pose a greater issue due to ice
- Everything about it - especially the 'art' (and it isn't art) - isn't working. Have lived [omitted] - have never seen an accident of any kind. You're trying to fix something that isn't broken. What is there now is a dangerous distraction to drivers and pedestrians. An 'art exhibit' on a busy, busy street? Dumb idea. Like putting a patio on a Deerfoot exit ramp.
- How slow the city has been in addressing intersections like this one throughout the city.
- Whatever is going on inside the barriers is extremely distracting. It looks like bodies are everywhere down there. Also, driving west on Royal, turning north onto 8th Street is a little unsettling to have those large curbs there. They're big enough to do a lot of damage, but not so big that I can see them while turning right. Considering the odd shape of the curb, this will be a spot where driver will no doubt damage their vehicles. Please put some extensions/flags on them to help guide us.
- A right hand turn (east), while heading north feels much less safe. I used to be able to hug the large corner and make my turn. Now the corner feels much tighter and I have to get into more traffic to make the turn. I know this will be much worse in winter as the lanes narrow from less than ideal snow removal.
- Other than making it permanent (curbs, trees etc), I think it is fine. The locations of the barriers are good. I would also add zebra stripe cross walks to further enhance visibility.
- Looks messy !!!!
- It is a little more difficult to see the traffic coming down the hill at the intersection. The art is weak in its design and execution.
- For cyclists coming down the hill the calming curbs force the cyclist back into traffic coming down the hill and it is especially difficult to make a right hand turn onto royal from 8th st without slowing down a lot and doing a tight turn, this will lead to slips off the bike and also makes it difficult to use bike signals to indicate



# Royal Avenue & 8 St Intersection Traffic Calming Pilot

Stakeholder Report Back: What we Heard/What we Did

February 2018

you're turning as you need both hands for the braking. I would allow a. It more space for a bike lane.

- The distance for a vehicle to travel when turning south onto 8th from Royal Avenue is still too great. A driver must still hit the gas pedal hard when turning, as cars coming north down the 8th Street hill more often than not are travelling above the speed limit, and appear very quickly into view. Suggest that the east side of the intersection be moved further straightened out into 8th Street to further shorten the distance.
- Temp curbs are confusing and dangerous. I've seen both drivers and pedestrians confused by them. The colored tires are a nice artistic touch. However, please get rid of the plastic humans. It's disgusting to see them strapped to poles, our young kids are scared of them, and late night revelers vandalize them.
- Everything
- We can still improve on the side walk along the west side of 8th that turns to stairs and has no wheel chair or stroller access.
- My comments above reflect my position.
- Two cars need to be able to fit on royal ave heading west to cross 8th. Traffic is backing up too. As because people can't turn right while someone waits to turn left. nothing bad for me
- Driving entry/exit from Royal Ave to 8th street more difficult and probably more dangerous. [omitted] this new measure is an eye sore. It also is attracting late nite bar crowd who are moving items to road. early evening skateboards are trying new "tricks" also dangerous. Just install crosswalk lights. Also limits parking on 8th Street
- I think the traffic going down the hill (Northbound) should have a turn lane to the East on Royal Ave so they can signal and not stop traffic. I can see lots of sliding accidents come winter. Make the curbs a lot smaller.

The traffic heading East on Royal wanting to turn right now can't until it is their turn causing the traffic to back up.

I cycle through this intersection twice daily including the winter. I also drive through it a lot as well

- The art installation with people-like forms is very distracting... it does slow drivers down, because they are like, "What is that?", but then it distracts from the real people in the area and the vehicles going by! A less provocative, but still pleasant alternative (benches away from the road, flower pots, non-distracting sculpture), would be a nice way to fill the space.
- The aesthetics are terrible. It looks like a scrapyard. It is potentially distracting to drivers at an intersection that they are trying to make safer.
- I am having trouble when needing to turn left onto 8th from Royal Ave (while facing West). Typically a vehicle behind me will move to my right to turn right and this blocks my view if oncoming traffic coming from the north. This has happened several times and makes things a lot more difficult and more dangerous. As a pedestrian, when I cross Royal Ave from the South East side of the street to the north east side is proving dangerous with sidewalk being far from stop line etc
- I am not at all happy with the new design. It seems that the City feels any intersection where traffic moves easily, or easily enough, needs to be changed to constrict traffic. Before these changes, there was enough room in the intersection so that people driving westbound on Royal could turn left, right or cross 8th. Now, it's one car at a time, and in the afternoon when there is traffic on 8th, you sit in a line and wait. [Burning] gasoline and harming the environment.
- really makes no difference in crossing 8th street from Royal avenue. Also the cement barricades are too dangerous



# Royal Avenue & 8 St Intersection Traffic Calming Pilot

Stakeholder Report Back: What we Heard/What we Did

February 2018

- Nothing really. I feel pretty positive about it. My husband thinks there should be a traffic circle there but then the space wouldn't be as usable for a garden or seating.
- see above.
- The height, because the space is so large I think taller things would more impact.
- Temporary curbs seem hard to judge, not quite sure where they are when I turn right from westbound Royal to northbound 8th, and it often feels I am about to drive over them. Could be just a familiarization is needed.
- THE PAINO NEEDS TO GO. People play it at all hours of the night [omitted]. It needs to be locked at night or removed. Please, I am begging. Have mercy. [omitted]. I also worry about the 'playground' theme of the pilot in an area without playground zoning. Is this not a safety risk? I witnessed young children hopping back and forth from the temporary curbs onto the roadway.
- the current design is temporary so the quality is not great but that's expected when it's a pilot
- lack of overhead/streetside crossing lights. would be useful, especially for northbound traffic to have a pedestrian crossing indicator when persons are crossing 8th street along Royal Ave SW (East-West).
- NIMBY comments on physical feedback board. Space is still too... novel - not as much of a space to stay at. (Yet?)
- The newly created cross walk on the South side of 8th street is very dangerous, cars seem to have a hard time stopping coming out of a corner coming down hill.
- barricades are a distraction for motorists and sometimes it's even harder for them to see me crossing
- I think a 4 way stop will be better than these distractive and hazardous calming curbs. 8th street gets very slippery in the winter months and in the past I've had to pull my SUV over to the side to gain traction again when it's icy. I am just worried what will happen now with these curbs there now. Will I get rear ended if I pull over???
- Design is too conservative - focuses on only repurposing unused space instead of narrowing the intersection or looking at steps to encourage slower speeds through design. (I get the yellow blocks are limited but it comes across as really conservative) No bike accommodation or consideration. (even if it's just steps to encourage the ability for a lane or separated track on 8th street by designing it as pedestrian islands/parklets with a 2m bike lane on either side.
- Sorry, but it looks like a school project gone horribly wrong. The intersection is even more dangerous. It's too much of a distraction when driving. The statues are scary. The angle of the right hand turn from Royal Ave to 8th Street is awkward. Now you are unable to turn right when the car in front of you is waiting to left or go straight. This backs up traffic, even more. Winter is coming with snow and ice, if the intersection remains this narrow, pedestrians and drivers will suffer.
- It's ugly. It looks like clutter. It adds no value to the property. It takes up parking which is already an issue.
- Could look better. The [omitted] paint doesn't match Mount Royal aesthetics. But I do like that it is fun.
- All of it.
- 1. It's really ugly. 2. It eliminates much-needed parking spaces. 3. It's not necessary, thus a waste of tax-payers' money. If people feel unsafe crossing such a wide street, they need only walk ONE block to cross at 19th Avenue.





# Royal Avenue & 8 St Intersection Traffic Calming Pilot

Stakeholder Report Back: What we Heard/What we Did

February 2018

- How do we stop this project from going any further? Surely we have more urgent matters that need attending to?
- Without pedestrian-controlled crossing lights, it may not be effective. It's a WIDE intersection, and it would take a brave person to just head across without some flashing lights.
- While I understand the goal of reducing pedestrian crossing distances, this doesn't seem like a high pedestrian traffic intersection. There are likely more pressing locations for bump outs
- The traffic calming does not substantively address the problems on the road, namely: speed and volume of traffic on 8th street. Moreover, it does not address pedestrian safety, the ostensible goal due to the stop signs being too far set back. This intersection needs: (i) a traffic circle; (ii) further narrowing; (iii) a median; and a pedestrian crossing single or some combination of all of the above. I do not believe the City's claim that a traffic circle is not feasible.
- It's dangerous.
- There is no space left for cyclists! What are you supposed to do on a bike? The curb extensions push you into traffic, and it does not feel safe unless you ride on the sidewalk, which I am pretty sure is illegal.
- Even though it's temporary, it's so ugly.
- Nothing - it's better.
- Not much, I love it. It needs to be made permanent, and used as a model for every other intersection redesign in the City. There must be thousands of intersections in this city that literally need to be completely rebuilt, and yes, I know that would cost an insane amount of money. Increase our road safety budget by 3 orders of magnitude and it should become feasible. There are literally lives at stake.
- When you're heading west on Royal Ave and have to turn on to 8th St (either direction), it's difficult. Turning requires going straight and then making a very sharp turn. Also, if you're turning left, people who are behind you and want to turn right get impatient.
- Roadway is still too wide (8th St) and the surface treatment of the roadway feels like we drive on cobblestone
- I don't like the colour yellow. Can we paint this in other colours?
- I don't think this kind of space (next to a fairly busy road, at a junction) is a place to rest or play. The design patterns seem to entice children to come playing next to that busy road. It's scary, unless it's in a 30 km/h zone. It seems tokenistic, let's have children play here, let's create a public space, not realistic.
- obtrusive - hard to understand and see - the pilot art design was offensive and pornographic at one point..very distracting
- The intersection is still sooooo wide, even with the addition of all the traffic calming stuff. Cars still rip through up to Mount Royal because there is no expectation to stop and most cars are high-end sports vehicles.
- Too distracting!

#### 4. What do you like about how the space between the sidewalk curbs and the temporary traffic calming curbs is being used?

- Nothing installed yet but it's better than before. Crossing are shorter and feel safer than before.
- Doesn't seem to be used for anything yet.
- A priority bike lane would be great. It would make it easier to get onto 8th from Royal Ave.
- Nothing, I think you are over thinking what needs to be done, you should also use the





# Royal Avenue & 8 St Intersection Traffic Calming Pilot

Stakeholder Report Back: What we Heard/What we Did

February 2018

curbs with the old set up, people just didn't know how to use that intersection

- I like how it slows down the traffic to make it safer. However, there are better ways of mitigating the speeding cars. The posted speed limit is 40 km/h but cars drive much faster coming down that hill. To effectively enforce the speed limit, putting in something like a camera or a speed bump would slow down the cars without rearranging the entire intersection.
- I liked it when it was a road!
- nothing
- It's a junky, mishmash [omitted]. Hire someone who engages with residents. Hire someone who does something of value. Taped figures all over the trees...one has red blotches on it as if the figure has been shot or stabbed. Looks like a joke. Most of that garbage is movable and will end up being tossed around. This was a nice neighbourhood. Thanks for ruining it.
- It is a large space. Final design could include benches and planters, etc.
- Nothing
- It continues to be wasted space. At least if you are putting in curbs, use it to distinguish merge lanes for traffic from Royal Ave onto 8 St, or get rid of the merge lane and extend parking options in the area, which are few and far between. The old tires that are being placed in the area are not art, and I wouldn't be surprised if they encouraged dumping of other garbage. Also, benches do not make sense in that area, as I can't imagine anyone that would want to sit in an intersection.
- Much needed in residential neighborhood.
- Using the street regularly, I prefer the way it was. I was surprised to find the curbs there all of a sudden. Were we surveyed about this and I missed it?
- Nothing.
- Art, colour, variety, vibrant.
- The student art is interesting and colourful. From a liability perspective, is the City exposed when inviting the public to play in an unclosed public right of way (yes)? Might cello-figures hidden in bushes startle some elderly pedestrians, particularly at night?
- nothing
- I like that it better defines this intersection. As someone who drives this way to work everyday I have seen cars all over this intersection and pedestrians who risk being hit because of how indistinct and awkward the intersection is.
- Poor design. Placing a play area next to a busy road is very dangerous.
- I think right now it seems more dangerous for cars. People aren't used to the new structure and don't know exactly where to stop when coming out of Royal avenue going west or turning up 8th Street. It seems to make you speed up instead of slow down because before this you could round the corner more easily and merge onto 8th or Royal.
- Bit more added safety is nice.
- Given that the junction was identified as a high risk, the space is probably best used remaining 'empty'. The colourful tires and street art are a great idea in principle, but alas are a new, visual distraction to drivers. The art is certainly appreciated but is in the wrong place. I don't believe it belongs on such a junction but encourage the teacher and the kids to continue creating colour and decoration for the community. Great idea, but not helpful or safe in this location.
- I feel like the current use of the space is dangerous and is an additional distraction to drivers. Now drivers have to pay attention to the changing intersection, yet also have young children or adults playing directly adjacent to it. In the future if this is approved than potentially green space could be put in here with a bench and some flower pots.



# Royal Avenue & 8 St Intersection Traffic Calming Pilot

Stakeholder Report Back: What we Heard/What we Did

February 2018

- I find it distracting and a waste. Leave it as it was and pedestrians can cross on the south side of the intersection where it is narrower.
- Nothing. It's ridiculous like most of the ideas coming out of the planning office. [omitted]
- Encountered it yesterday for the first time while driving down 8th Street. Hadn't even heard about it. I found it to be EXTREMELY distracting, not to mention ugly and creepy. I believe it should be removed immediately.
- Love it. All about the kids.
- I like involving the community/local schools with art. Not everyone will appreciate it but an interesting temporary and low cost solution.
- Happy to see some art.
- Public art great but needs landscaping and softening with flowering plants, bushes & smaller trees .
- Vertical visual deflection to visually narrow the space. Trees and tall planter boxes.
- I think using it as an art installation is a great way of better utilizing the space. Maybe figure out a way to bring some tables and chairs to the area, so I can sit down, have a coffee and enjoy the space. Maybe once a year get an artist to change the look of the intersection to keep it interesting. Just please don't change it back to an empty space. This project and others will help in making Calgary, especially the downtown a lot more enjoyable for all.
- It's really great. I like the colors and how the students have turned a normal space into something fun.
- Like that it engaged youth.
- I really love all the art!!!
- I like it that they're put to creative use, but the white hanging men maybe too distracting.
- I don't like it. It's visually too busy and looks [unattractive]. That is a nice neighborhood, and it looks like someone spilled a box of oversized smarties, or some young kids went wild with their paint.
- [unattractive], seems to be a waste of our money.
- Great! Attractive. It gives the intersection a sense of place.
- I like that it is animated
- The art project is a fun little pilot — I assume this was just a sweet, quick imagining of the types of ways the space could eventually be used. Very whimsical and fun to have a little pop-up like this.
- I like the idea of having some form of landscaping
- I don't mind them. I live [omitted] and cars are still going very fast up and down 8 street. The curbs don't seem to be slowing cars down.
- Colour, planters are great. I would like more plants and greenery.
- This space is extremely unpleasant right now with graffiti "art" and scary mummies, basically an eyesore. Not to mention that it might attract illegal drug activities in the neighbourhood like 6 - 7 years ago.
- Again this artwork is terrible. I feel guilty saying this as it is the result of hard work by the Western Canada High art students but it does not belong on the road in our neighborhood. I hate to see what is going to happen when Stampede week arrives and a few inebriated people start rolling the tires down the street.
- I don't like how the space is being used at all. The packing tape mannequins are creepy - I don't get them at all. Who in the right mind would want those in front of their house. Why is there a broken piano there? I don't think the idea of having a "common area" in between the curbs works at all. It is a high traffic intersection that could potentially be dangerous (especially during Winter). The intersection is on a hill and a sloped "common area" is not ideal.



# Royal Avenue & 8 St Intersection Traffic Calming Pilot

Stakeholder Report Back: What we Heard/What we Did

February 2018

- No it is a little confusing and looks incomplete. It is not clear to me how this will help with pedestrian crossing or accidents. Again turning left onto 8th is a wide stretch and putting barriers in does not nothing to help.
- Don't like anything about it. Wait until the midnight drunks get in there - all that junk will be all over 8 street
- Interesting, artistic and lively uses for this space are encouraging.
- I don't think it's a bad idea, anything to help pedestrians be safer is a good thing. Please do not plant trees there, you guys keep planting trees that will always grow to block your signs and views of traffic.
- Nothing. You should leave a lane for bikes between the curb and the dead space. Right now it looks like you are encouraging children to play next to an intersection.
- I think having nearby children participate was a great idea. It doesn't look professional, but that is not the point. When you see it you can tell that some of the art was done by children, and I think that is really sweet.
- remove !
- It is nice to see some temporary public art. May not be the best art but it gives an opportunity for the inexperienced.
- Kind of cheesy, the permanent version should be more professional
- The artwork is very busy and distracting.
- Make them cement based with bigger signs so drivers can see them.
- Nothing
- Nice temporary art but long term it should be landscaped to beautify the entrance into Mount Royal.
- Nothing, not one bit . It is a joke and the concept sucks!
- Nothing
- I like the student art
- nothing
- I think the art is distracting and will look bad after it has been rained on a few more times. Please remove it.
- I don't really think it is being used well now, at least not with the current art installation... it may be good to have other art that is not so large-scale, but more pedestrian-level (not distraction to drivers, but interesting to walking speed or slow biking speed). It is a nice idea to make it fun, but it's not really a place for hanging out... it's not designated as a park... it's really just a sidewalk in front of houses, so I don't know that you really want to make it a place to hang out
- Nothing, as currently configured.
- Ugly looking, don't like it at all.
- It's an opportunity for the local students to participate; I think that's great. I also like the bright colours.
- Distracting. Why not large green plant containers, which would promote more green space.
- Colour, human element (the sculptures), that it just appeared (this was wonderful to see something different and new).
- Love it! Hoping for grass and trees, and maybe some permanent artwork when the final design is implemented.
- The creativity and bright colours are wonderful.
- for a temporary measure it's great to have gotten kids engaged in art and taking pride in their local area. Obviously if this becomes permanent it should be landscaped appropriately
- it looks kind of cheap - painted tires as planters. It doesn't currently fit into the current look of Lower/Upper Mount Royal.
- Art, plants, attempts to foster community. It looks inventive and experimental.
- Not much, it's become a hang out area for hobos and recently people are dumping unwanted furniture there and it's now very



# Royal Avenue & 8 St Intersection Traffic Calming Pilot

Stakeholder Report Back: What we Heard/What we Did

February 2018

difficult to make that right turn onto royal avenue from 8th street.

- I see homeless people hanging out there in the morning so really a bad idea and I see cars and cyclists fighting for space now.
- It's cute, but I've seen skateboarder, bottle pickers, and various type of people hanging out there. Doesn't seem like such a good idea when the area is so close to a main thoroughway.
- Not a single thing. [It's] entirely useless.
- The piano is a good photo op type place
- I don't like it. It's very distracting as a driver.
- Nothing. Aesthetically, it's a disaster. From a practical standpoint, it's just not necessary.
- Don't like it. What's wrong with having a nice wide street once in a while?
- Love the use of art.
- Creates a bit of a "safe" area for pedestrians
- They are not currently being used, nor are they likely to be used going forward as no one wants or needs to stop and visit by an overly busy road in a residential neighborhood.
- Hard visibility, and not well thought out since it is more dangerous than before.
- Nothing - I suppose it helps pedestrians, but at the expense of those who ride bikes in the neighbourhood. This isn't a fair solution.
- Just pour sidewalks/curbs, no need for trying to make it "pretty".
- The art. Making the lanes narrower.
- It's beautiful. Impermanent, but beautiful.
- I don't. It's really creepy to be honest.

- High school was involved, community involvement, public art.
- Nothing.  
Who is going to shovel them in winter to make it safe for pedestrians?
- It is too distracting to have the art in the centre of the bumpouts - particularly the clear ones resembling people.
- Starting to help define edges of the roadway to make them smaller
- It's fun. Especially for a very boring neighbourhood (upper MT Royal)
- not much, I don't think it necessarily need a specific predetermined "use".
- nothing..waste of time and my money
- I like the use of local artists from the high school to take ownership and design some stuff. It's a neat display and visually interesting. Western Canada should just take full art ownership of the block and every class can repaint it and set up new displays whenever. Make it a living display that is always changing and adapting, plus gives students a cool space they can claim as their own and get them to start thinking about community .
- Better visibility is safer for everyone
- I really appreciate having all that space to safely cross the street from curb to curb, and I like the layout.

## 5. What else might be done in the space between the sidewalk curbs and the temporary traffic calming curbs?

- painted pavement/public art on street/road would be preferred
- Green space. Space for meet other people, seating, something that takes advantage of the great view of Downtown.
- Needs greenery.
- Bike lanes
- If this becomes permanent, concrete planters would be great. It would increase visibility of the new curbs while still allowing drivers to see pedestrians.



# Royal Avenue & 8 St Intersection Traffic Calming Pilot

Stakeholder Report Back: What we Heard/What we Did

February 2018

- go back with original design and use those traffic curbs
- Nothing.
- remove the calming curbs
- How about getting rid of the space. The road worked just fine after the lines were finally drawn on it a year or so ago. Wasted space. Better off putting a bike lane than these yellow curbs. Or better yet, how about creating wider, decent sidewalks?!
- Temporary intervention is a good idea, but just spend the money and make it permanent/nicer looking to appease grouchy neighbours
- Merge lane - Pedestrian crossing lights (like the crossing lights at 8 St & 15 Ave SW) – parking - photo radar for speeding control - traffic circle such as the ones on Royal Ave
- More garden if it becomes permanent. More neighbour involvement.
- Keep the space clear of distraction. No trees that could blur view.
- If you are concerned about pedestrians, put in a pedestrian crossing light. I have lived [omitted] and this has never been a concern about traffic but rather pedestrians.
- Little Free Library, a bench, planters.....
- Concrete planters with "fake" cedar bushes and trees (zero maintenance). Any "play areas" should be in the lee of such protection. I like the cello figures. Good prototype for human models (although they need to be located and sized so as not to confuse drivers who might think they are pedestrians).
- Hold city meetings . This will give the city a way to make decisions quicker.
- I like the idea of flower pots but perhaps ones that are bigger and taller and more earthy colours to match the historic and mature natural part of this beautiful neighborhood.
- A paved area like on memorial drive.
- A 6" high wooden border filled with woodchips or stones or grass would be fine inside the curbs. Leaving the curbs, no goofy tires/plastic wrap is safer. On the 'art' side: It isn't original art. This is a rip off of what they did in Louisiana in 2015 <http://trailnet.org/tag/bicycle-safety/> used for pop up traffic calming demonstrations <http://trailnet.org/author/robinjohnson/page/4/> and not original art so that is not an excuse. It makes absolutely no sense for safety or property values.
- Make the art something city related, or incorporate the art better into the barrier/curbs.
- Given that this is a temporary feature I'd be tempted the space alone. It's a shame that the city isn't willing to introduce a fourth crosswalk, as many residents raised and requested at the meeting.
- Leave it empty to encourage drivers to focus on the road and the pedestrians crossing the intersection. Why add another distraction to an intersection already labelled as dangerous. To be honest I have heard more people yelling and shouting at pedestrians from vehicles since this has been implemented. Previously you would have heard the odd horn honking as cars scurried through the intersection, however I have yet to witness an accident and I have lived [omitted].
- The temporary "traffic calming" curbs should be removed and leave the space as it was. It is safer to merge into that road that turn a sharp turn into it
- Undo everything that has been done.
- Why does anything need to be done with it? Just leave it.
- Put up signs to keep the [naysayers] away.
- What might just add to and complement the temporary space is some planters with flowers/greens to fill in and make for a bit more of a dynamic space. Drivers by miss some of art painted on the ground but would see planters.





# Royal Avenue & 8 St Intersection Traffic Calming Pilot

Stakeholder Report Back: What we Heard/What we Did

February 2018

- Not sure. Trees? Garden styles? Local Community gardens
- The park like space with participatory music and art displays will be enhanced when curbs and permanent landscaping are in place.
- Again tree and tall planter boxes...greenery and garden treatments that visually narrow the space
- Revolving art installations.
- Tree planters?
- More chairs.
- bike repair station, community library, oversized chess board, picnic table
- I would be supportive of greenery being added - some tasteful (stone, metal or other neutral color) planters would be so much better than the uncoordinated paint splatter-look that's there now. Something less visually distracting than the current installation would be preferred as well.
- leave it alone, why fix something that didn't appear to be broken. Leave the intersection alone. It is a large intersection but why try to jam it up and impede traffic flow?
- Bistro tables and chairs  
More plants. A lemonade stand. a little free library. supplies so anyone can draw on the asphalt with chalk
- Large, permanent flower beds, a small bike lane through the barriered areas, so that navigating with people driving cars, who tend to just scream down 8th, could be more safely negotiated.
- I like the idea of planters and having some form of landscaping within the temporary curbs. The painted tires though colorful are just hideous, especially considering the demographic of the surrounding area. The addition of some LED lighting for additional safety might be nice. And providing a dedicated bike lane on both sides of the street, there are numerous bikes going both up & down 8th St. Please remove the plastic people.
- Not sure.
- Make it permanent.
- only green space and flower planter please, nothing else.
- I don't believe we need the calming curbs but if they have to be there just leave it back to it's natural space. This is a beautiful part of the city with the stone fences and trees - we don't need the addition of colourful tires and tape mannequins. The one area looks like a [omitted] kindergarten playground and the other looks like humans tied to trees which actually scare some of the children.
- Just put plants or grass in them and be done with it. I'd rather they be empty than what's currently in them.
- Would a roundabout help recognizing that the flow from downtown onto 8th street is considerable. Have the people who came up with the latest design ever tried to turn left during busy times? Maybe they should experience using this road from all areas (ie pedestrian, driver, biker) to better understand the issues before jumping to solutions.
- Make it look like an intersection instead of a poorly designed circus.
- More gardens and public art.
- Please focus on anything low profile and no obstructive to drivers. In the end the roads accommodate vehicles. It seems that striving to have more cyclist and pedestrians on the roads, it is making driving more of a challenge. Please provide balance. Vehicles will always be on the road and ensuring safety of pedestrians might start with visibility by drivers.
- Open up the inside of the corners for bike traffic. Pedestrians can still step out into the dead space and bikes will be able to make use of the space for safer corners.
- Nothing I can think of.





# Royal Avenue & 8 St Intersection Traffic Calming Pilot

Stakeholder Report Back: What we Heard/What we Did

February 2018

- I'm ok with painting the crosswalks a bright white/yellow , but the rest is an eye sore !!!! My vote is to remove all of it.....[omitted]
- Green spaces, turf with raised garden spaces? Community flower or edible gardens (But road wash and salts may be issues)? Venue for rotating roster of temporary public art? Enclosed small dog off leash like in New York Park? A portion could be set aside for community vendor(s). Small free library.
- Benches, small sculptures, grass.
- Fill in the space permanently with larger curbs.
- Nothing. No evidence that traffic calming actually is effective.
- Please consult with professionals and not students
- Landscape/park type space. Keep the visual allowance for cars but make it green.
- I suggest putting a fence around the concrete barriers and fill it with the Neanderthals complete with dunce hats who thought this was a good idea. Once that is done put a great big arrow with a sign that says look at the losers.
- I suggest moving the crosswalk on the east side of 8th (crossing royal ave) back to where the road is narrower so that cars turning left and right can do so in front of pedestrians and pedestrians have less street to cross. This will keep traffic moving and keep pedestrians safe.
- no suggestions
- if Western could make it an art project that is replace each semester, that would be great!
- remove this expensive art teaching project, a complete waste of money
- Make the calming curbs smaller to allow right turns from 8th onto Royal heading East and turning right from Royal on 8th North
- Keep the spaces open visually, to deter malingers. You could just fill it in and make them traffic islands (low maintenance landscaping, low shrubs, flowers, etc)... cuz
- really, they are just really big sidewalks in front of and beside houses.
- Install permanent curbs and fill the gap with grass and trees. Flower pots, if done on a large scale and timeless in design at reasonable cost, could be an acceptable addition. Need something more in harmony with the community. Flower, trees, and planter would be more eye pleasing. However please please do not turn it into a rest area, It will attract drug and other illegal activities like 12 years ago in this intersection.
- I'd like to see some low planting there; native plants/shrubs, things that won't affect sight lines. Maybe some seating.
- Green planting
- taller structures where the lane dividers are, - even more colour -ongoing art installations that change on a semi regular basis
- Shaded benches? Donation drop off containers? Book sharing 'free library' boxes? [omitted] THE PIANO HAS TO GO ASAP!!!
- Obviously if this becomes permanent it should be landscaped appropriately, preferably with some sort of semi-permeable surface not just huge swaths of concrete.
- Benches
- overhead pedestrian crossing light standards permanent planters (if any) with low profile plants that allow for increased visibility when turning on and off of Royal Ave SW
- Grass, greenspace, benches, something to make the space more inviting. Better underused green space than dead asphalt. Non permanent options; turn some of the bulbs into parklets.
- The calming curbs willing extremely dangerous in Winter time, the size should be greatly reduced and eliminated all together
- The traffic calming curbs should be taken out. Best way to slow cars down is to have another 4 way stop at Amherst or Durham and 8 street. Right now cars are already traveling



# Royal Avenue & 8 St Intersection Traffic Calming Pilot

Stakeholder Report Back: What we Heard/What we Did

February 2018

too fast coming down hill around a bend, so another 4 way stop will be way more effective to slow cars down than the calming curbs.

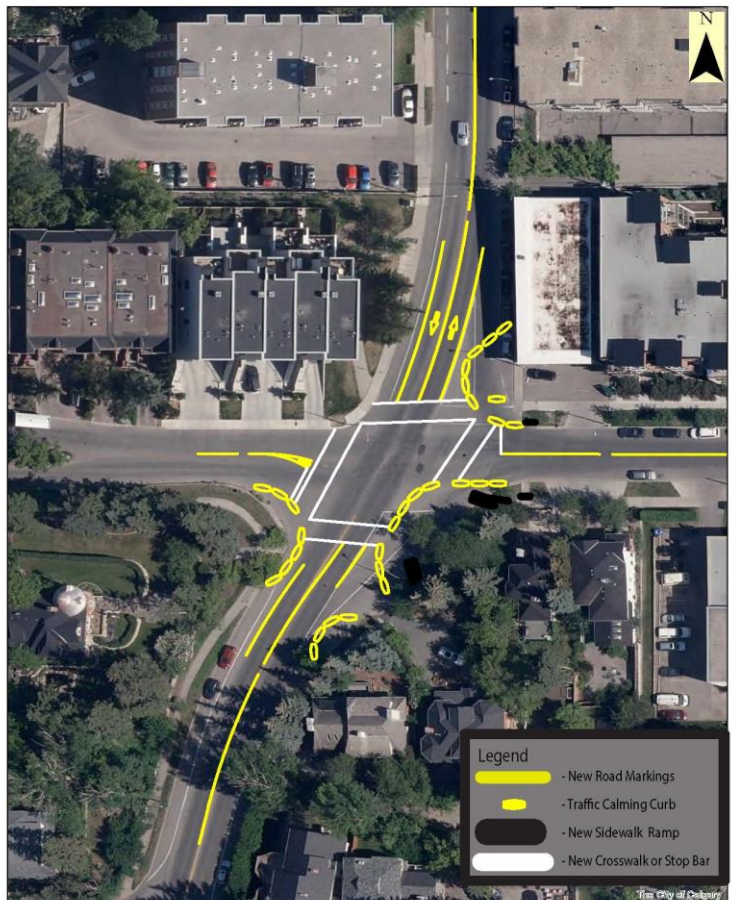
- Maybe some flower, trees and giant planters, but the final design should have a deterrent from having people congregate there. Just too close to the road for comfort, especially for kids. it's a known fact in the neighborhood that kids hide by the bushes at the intersection on 8 st and Premier way and throw snow balls at cars in winter. This could become their new playground
- If you are going to use plants, keep them watered trimmed and fresh. Dead plants in painted tires are just sad :(
- Make it green and a comfortable place for pedestrians and people waiting to take the bus. This is an entry way into a beautiful neighborhood when travelling south and a gateway into the core when travelling north. A historical plaque about the community may be a nice touch.
- Parking. Shrubs. Greenery. Gardens. Something will ensure someone won't get run over. But Parking would be ideal. 2 cars could fit there.
- Green space might match the aesthetics of the area. There aren't that many kids in the area.
- Nothing. Parking spots are good.
- Leave it the way it was. Unless hundreds of pedestrians are inconvenienced or endangered every day, shouldn't our resources be directed where they might do more people more good?
- Leave it alone!
- Permanent modifications need to include kerbs, grass, landscaping, or some other way of distinguishing the changes from the adjacent roadway. It's a bit visually confusing right now, saying both 'road' and 'art'.
- perhaps some wayfinding elements...what's to the N, S. E and W of where the pedestrian is standing?
- The basis of this question is flawed and suggests that a decision to proceed with the current design is pre-ordained. The City needs to look at new designs to address the substantive issues with the intersection, namely speed and traffic volumes. As a resident of the community I am very frustrated that the main concerns are not being addressed and instead increasing pedestrian access is purportedly being addressed instead of dealing with the real issues identified by the community.
- Cement curbs in place...no tires needed.
- Why not just install pedestrian lights? They would benefit everyone.
- If anything just put nice lights to ensure pedestrians are seen in low light.
- Keep the art - it's great. Or, planters.
- Landscaped pocket parks with seating and foliage.
- plants/greenery, nice paintings (like the ones on the planters in Marda Loop/Garrison)
- Suggest those spaces be made larger and then landscaped. Look at the Mawson Plan for some ideas about how to treat these public spaces.
- I like parks, make this a park.
- Could it be planted, providing a buffer between the pedestrians and the cars, between the cyclists and the cars and the pedestrians. Could it act as an extension of the grass along the pavement. Could it be a rain garden to filter some of the storm water? I really don't think a "use" here is relevant, it is not the right urban fabric: too busy, too open.
- leave it alone
- Pop-up bars and a cafe /food truck might be cool (but may not be feasible). Honestly, the intersection is so over sized you could sell 60% of it and put up a small apartment building. A large grassy traffic circle might be nice too.

# Royal Avenue & 8 St Intersection Traffic Calming Pilot

Stakeholder Report Back: What we Heard/What we Did  
February 2018

## Social Mapping Tool

1. Tell us what is working or not working about the design in that location. Tell us what you like about, or what else might be done, in the space between the sidewalk curbs and temporary curbs.





# Royal Avenue & 8 St Intersection Traffic Calming Pilot

Stakeholder Report Back: What we Heard/What we Did

February 2018

- Hard to see oncoming traffic on 8 st from stop line on Royal.
- People have to come further out to see on coming traffic which means pedestrians crossing are being blocked site wise. Utter fail.
- Children are playing close to traffic and distracting drivers. This is not good.
- Skateboarders are using this to shoot videos late at night. I have already had to file a noise complaint with the police.
- Extremely dangerous. In Winter time this barricade will definitely cause a lot of pile ups when cars & buses sliding down the hills.
- Homeless bottle pickers are using this area as a parking lot on their way to the bottle depot
- ugly grafitti
- Loss of valuable parking space.
- Do not need this cross walk, the one on the North side is sufficient.
- Dog feces everywhere, it's become a de facto off leash area.
- the "art" piano is blocking view of traffic coming down from the hill
- drug dealers will return if area is turned into a rest area or benches are put in.
- the dummies scared the [living] daylight out of me when I walked my dog at night
- noise pollution from the piano in the early hours of the morning [omitted]
- If you like this "Art" ask yourselves if you would want them in front of your homes??? These poor home owners who have to put up with it.
- This is "Art" if it's on someone else's properties. I bet you will call it graffiti if it's on your homes.
- Loss of one parking spot is hardly a real issue.
- Graffiti is not the same as vandalism.
- To everyone who like this. I hope you get to speak to the poor motorists who ram into the barricades and then gets rear ended in winter
- Sightlines aren't great looking south (pilot doesn't realistically change this); move crosswalk and stop line further west?
- A 4 way stop further up the hill at Amherst or Durham and 8 street is a more effective way to slow down traffic speeding down the hill
- This space has become a dumping ground for unwanted furnitures from the apartment dwellers and unleashed area for area dog owners
- mototist speeding down the hills after coming out of a bend - makes it difficult to see pedestrains trying to cross at this new crosswalk
- I've seen cyclists being squeezed by motorists, especially during rush hour. Cyclists are avoiding it by riding on the sidewalk
- this is a major obsticle when I am cycling uphill, please take it out. Kids are playing hopsotch here too, very dangerous
- Put in a 4 way stop or install an island to break up the cross walk will be way cheaper and simpler. This is too confusing now
- With the calming cub out like this, it will be impossible to make a right turn onto royal ave without sliding into cars by the stop sign.
- with the calming cub out this far will be impossible to make right hand turn onto Royal ave without sliding into cars by stop sign in Winter

Public art, with height and movement/give, i.e springs, in case of slippage on the steep hill.