



Springbank Hill Community Park

Stakeholder Report Back: What we Heard

January 2017



Project overview

The Springbank Hill Community Association (SBHCA) has been entrusted by the City of Calgary to develop a 6.29 acre parcel of land on 26 Ave SW between 77 and 69 Streets SW. The site is a beautiful Aspen forest surrounded by homes, a church and in close proximity to a K-9 school (2017), high school and university.

Community consultation in 2011 and 2015 indicated a desire to develop the site as a natural/recreational area, a space where residents can connect with nature. The project envisions a natural park where the community can have memorable outdoor experiences and strengthen social connections. A space that offers greater diversity of leisure and play opportunities rather than the typical industrial playground model. SBHCA are working The City of Calgary Parks and Calgary Neighbourhoods to bring this project to reality.

This natural recreation area will not only benefit Springbank Hill community but also communities in close proximity (Aspen Woods, Christie Park, Signature Park, Strathcona Park, Signal Hill, Richmond Hill) that are also in need of a place where they can connect with nature.

As part of The City's "This is my neighbourhood" program, residents of Springbank Hill requested help in enhancing this area for community use.

To create ideas on how to improve the functionality and accessibility of this natural park, the Springbank Hill Community Association partnered with [Ground Cubed Landscape Architects](#) (ground3), a professional landscaping company, to develop some conceptual designs. Conceptual designs incorporated feedback received from the community during the ["This is my neighbourhood" engagement](#).

Springbank Hill Community Association and The City are asking residents of Springbank Hill to provide their feedback on conceptual designs. Once a design is finalized, The City will work with the Springbank Hill Community Association to implement the enhancements to the natural area.



Springbank Hill Community Park

Stakeholder Report Back: What we Heard
January 2017

Engagement overview

Stakeholders were able to provide feedback on the concept designs at 2 open houses, November 24 and December 1, 2016. There was also an online opportunity to provide input from November 17, 2016 to January 2, 2017.

The input will be used determine the types of natural spaces that will be developed on the site and help to identify other concerns of neighbours and citizens.

What we asked

Participants were asked to respond 4 concept designs (see following pages 4&5)

- What are your thoughts about the design?
- This space is a sandy area that could be different types of play spaces. What do you think of these ideas?
- When looking at the natural wooded area participants were asked – What are your thoughts about these possibilities? (Possibilities indicated natural playground space, a treehouse, park benches, outdoor movie screen and slackline.)

What we heard

During the Open Houses on November 24th and December 1st and from the online feedback received it was evident Springbank Hill and neighbouring residents were generally very happy with concept designs and the amount of natural space that would remain when the park was developed. There was a wide range of opinions on the types of play areas suggested. Some were concerned about the potential parking problems. Concern was also raised about the potential for vandalism in the park.

- ▶ For a detailed summary of the input that was provided, please see the [Summary of Input](#) section.
- ▶ For a verbatim listing of all the input that was provided, please see the [Verbatim Responses](#) section.

Next steps

We will report back on “What We Heard” from the public and “What We Did”, how we used the information collected. Timeline for the development is below:

November – December 2016	Residents provide feedback on conceptual designs
January – February 2017	Compile Feedback
Spring 2017	Begin enhancements to Springbank Hill Community Park*
Fall 2017	Opening of the new Springbank Hill Community Park*

*Dependent on funding approvals.



Springbank Hill Community Park

Stakeholder Report Back: What we Heard

January 2017

Summary of Input

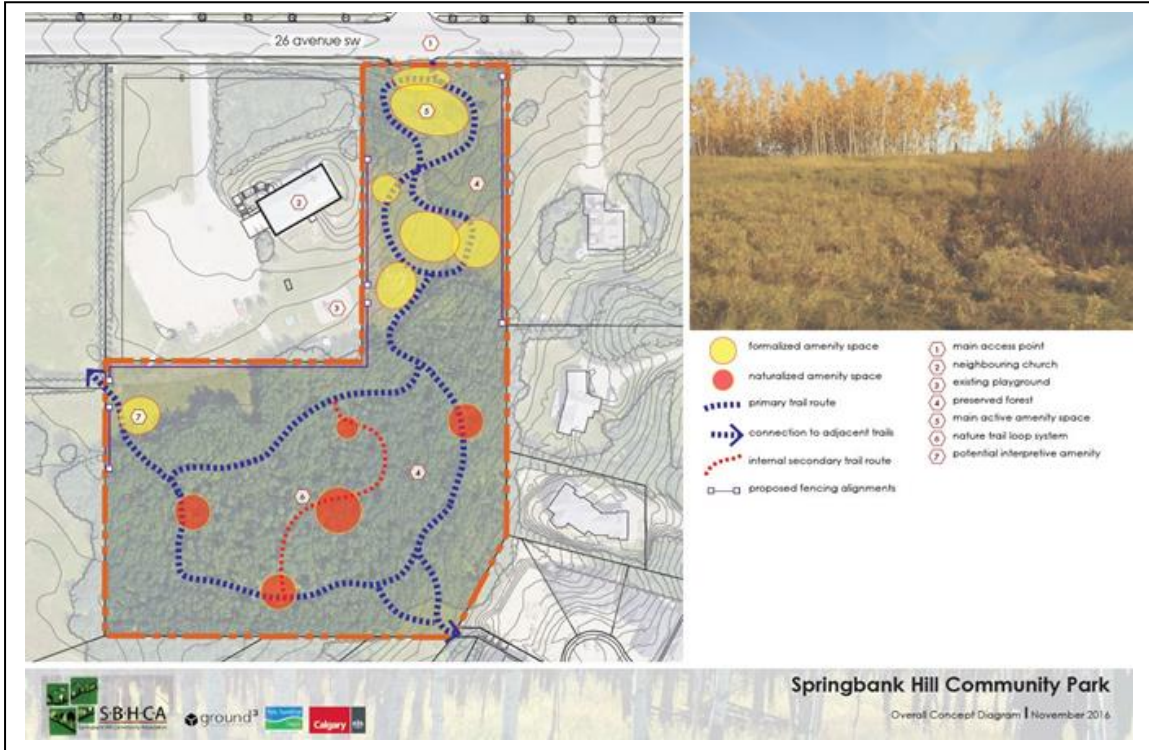
Input summarized is from the November 24 and December 1 open houses attended by approximately 90 residents and from the online survey that was completed by 16 participants.

THEME	Feedback Example
Like the Design	<ul style="list-style-type: none"> • Overall concept looks good. • Design looks excellent. • Like whole plan • Great concepts - really like the approach that the Association is taking.
Natural Space	<ul style="list-style-type: none"> • Love the "outdoor play" space using natural components as playground items. • Keep as natural as possible • Low level natural play
Play Spaces	<ul style="list-style-type: none"> • Would love to see a splash park or some sort of water element for kids. • Love the idea of natural wood/logs for kids to climb on and play. • The proposed play spaces encourage climbing, balance, building, interaction with more than a phone screen. • Not sure about the sandy area, might just turn out to be a place for bugs and animal waste to collect...?
Parking	<ul style="list-style-type: none"> • Parking? Street parking already filled! Maybe time limit? • Concerns with parking on street. May need to make a 2 hour zone
Vandalism	<ul style="list-style-type: none"> • Concerns re: vandalism, visibility, lighting • Lights on the pathway • Concerned about vandalism and severe weather, so no electronics in the plan would be wise.

Springbank Hill Community Park

Stakeholder Report Back: What we Heard
January 2017

Conceptual Designs



Springbank Hill Community Park

Stakeholder Report Back: What we Heard
January 2017



large playpit

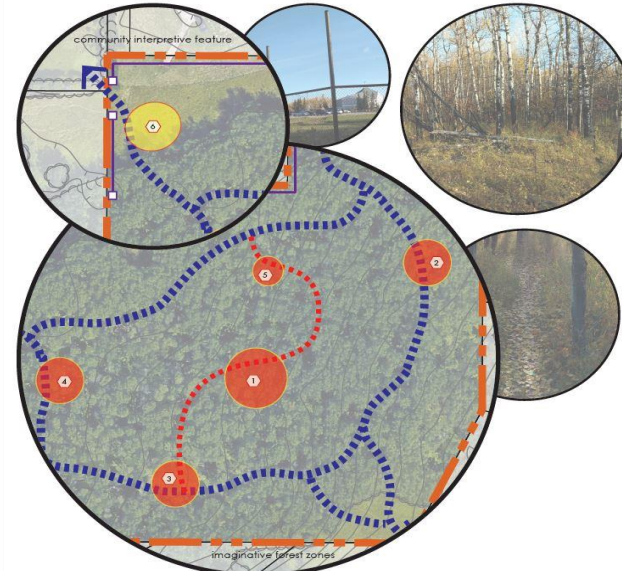
natural border materials

potential water play/climbing features

nature-themed creative play structures



Springbank Hill Community Park
Play Pit Precedent Options | November 2016





community interpretive feature

imaginative forest zones

- 1 outdoor classroom
creative play/nature building blocks
natural playground elements
- 2 natural playground elements
small scale exercise component
community garden plots
- 3 interpretive signage
community donor feature
stacklines between trees
- 4 sculptural elements/feature rocks
low treehouses
seating
- 5 rest nook with bench
interpretive habitat signage
found object historic to site
- 6 community info board
outdoor movie screen
interpretive historical wall

Springbank Hill Community Park
Ingredients for Interpretive Spaces | November 2016





Springbank Hill Community Park

Stakeholder Report Back: What we Heard

January 2017

Verbatim Comments

Questions were asked in person and were also available online.

What are your thoughts about the design?

- Concerns re: vandalism, visibility, lighting
- Lights on the pathway
- Concerns with parking on street. May need to make a 2 hour zone
- Emergency Tower
- Parking
- Zone 5 - ice rink area in winter
- Crossing Safely - walk lights
- Public washroom space?
- Like keeping as natural as possible! Thank you
- Bike rack
- Video Surveillance
- Like whole plan
- Cross Walk
- Would like to connect to Montreaux Park
- Given any consideration to possibly being on First Nations land?
- Keep as natural as possible
- Can community volunteers help during construction to a cost?
- Create sense of community
- Parking? Street parking already filled! Maybe time limit? Restrict Ambrose student parking?
- Adequate parking?
- Keep Natural!
- A washroom for the park
- Overall concept looks good.
- Design looks excellent. Love the "outdoor play" space using natural components as playground items.
- "Excellent variety to proposed features especially tobagan hill, picnic area, Boardwalk and sandy play pit. Something for everyone.
- Not so sure about liability associated with zip line but a supervised, non -permanent installation would be very popular. The components must be removable when not in use.
- Lighting is not discussed but essential to discourage loitering and unwanted nighttime activity."
- Not sure about the sandy area, might just turn out to be a place for bugs and animal waste to collect...?
- I can't read the words that describe the features on the website. Clear it up.
- design seems good but font/legend is impossible to read
- "The parking will no doubt be used for the sport fields across the street.



Springbank Hill Community Park

Stakeholder Report Back: What we Heard

January 2017

- The parking seems unnecessary for a neighbourhood park (unless it's an accessible path?)"
- Great concepts - really like the approach that the Association is taking.
- The zipline looks like fun

This space is a sandy area that could be different types of play spaces. What do you think of these ideas?

- Natural H2O feature, attracts birds, animals
- Formalized lawn should be ice rink
- I like the wood balising thing
- Children painted tiles on railing of boardwak feature
- Adopt a rink
- Toboggan Hill - concern of ending into boardwalk
- BBQ pits? Or Group area, possibility covered picnic area. I think there are teen challenge structures at COP, near Revelstoke for ideas. "Grimp. A l'arbre" in France, beautiful!
- Fire pits? near picnic tables
- Cross-country ski loop through forest
- How are you going to handle students from the public school across the street?
- No lights - keep it natural
- low level natural play (logs, rocks/stepping stone) - low level maintenance lifecycle costs
- I don't necessarily love the sand space. I think it becomes messy, plants will eventually blow in and animals may use it as a litter box.
- Would love to see a splash park or some sort of water element for kids.
- Love the idea of natural wood/logs for kids to climb on and play.
- The proposed play spaces encourage climbing, balance, building, interaction with more than a phone screen. Adding to a giant birds' nest from the twig debris in the retained tree stand would be popular with the young engineers in the community.
- "I LOVE the idea of an outdoor obstacle course or adventure course. A playground for older kids or adults to have an adventure... rope bridge, wall to climb over, logs to balance walk over, boxes to jump up and down on... natural playground elements, but challenging. Could also have benches to rest on. We need to encourage older kids/adults to be more active in this community.
- Also would love to have a watermark in the community somewhere... closest one is at south Glenmore, and it is always very crowded in the summer."
- ideas look good. does sand attract the wrong thing? ie stray cats use it a litter box...
- The sandpit is great idea - but lets make it fun for the kids.
- It needs logs and things to climb and play on.



Springbank Hill Community Park

Stakeholder Report Back: What we Heard

January 2017

When looking at the natural wooded area participants were asked – What are your thoughts about these possibilities? (Possibilities indicated natural playground space, a treehouse, park benches, outdoor movie screen and slackline.)

- Interpretive sign - animal, birds & critters
- Summer
- Great ideas! *make sure to include features for teen more challenging climbing stuff, netted higher areas, zipline!
- Rock Climbing wall
- Need for teenager engagement
- Pool
- A coroded swing and normal swing. Thank you.
- Gazebo
- Short tree house with slide
- Zipline please, swings too please
- Swings please
- Off-leash dog park
- Very good! Neat ideas! Love it!
- I love them all!
- I like the slackline!
- Treehouse
- Tree fort & walking bridge
- Movie Deadpool on movie wall
- I like the low tree house
- I like the outdoor MOVIE SCREEN
- Movie screen sounds amazing
- Simple path identification i.e. little colored triangles (blue, red)
- Hammock? Water fountains? Comfortable benches?
- I like #2 the net playground
- Zipline
- Ice rink
- Garbage bins? Who maintains these?
- Tree swing or hanging feature?
- Tree stumps (large) as climbing features - natural feel
- Signage - food, rules of space, garbage, in/out
- Fencing - chain-link, think long-term
- Graffiti wall for teens
- Dead-fall, Community Clean-up idea, CA run? City run?
- Slack llines look great



Springbank Hill Community Park

Stakeholder Report Back: What we Heard

January 2017

- Like the movie wall
- Movie screen! Great!
- Maintenance might be an issue?
- The tree House
- Mini water park ... like fountains that kids can play in during summer
- Outdoor movie screen
- In order #2, #4, #5
- Need continuous bike paths
- Outdoor screen for "Movie in the Park" during the summer
- 1, 4, 5
- Developers should committ to a certain percentage to contribute to the community
- Keep spaces as natural (non manufactured) as possible.
- Love the zipline, slackline, treehouse ideas. We need kids to be engaged in natural outdoor spaces.
- Love the outdoor movie idea
- Yes! Love the outdoor climbing structure ideas!
- "Concerned about vandalism and severe weather, so no electronics in the plan would be wise.
- Opportunity for community garden would be excellent but hard to protect from the deer, hare, moose, coyotes, etc. during the short growing season.
- No mention of ongoing maintenance... ie who maintains the sand pit to remove animal droppings?
- Is the park locked after sundown? Would someone be responsible for that?"
- I'm not an owl, so can't see words that small. Why are the images not scale-able?
- can't suggest on something I cannot read. font is impozible to reed :)
- "Please refrain from installing playground equipment that creates hazards/traps for deer and other wildlife.
- I dislike the billboard/movie screen."
- The trails really respect the integrity of the forest.
- Some paths through the trees with benches would be nice. Don't try to fill up the whole park with things. Sometimes people just want to go for a nice quiet walk and enjoy the natural beauty.

Is there anything else you would like to share? (Online only)

- Would like to see some gazebo type places (to host kids birthday parties)..... like down in Bowness Park.
- I think the idea is great! Keep it natural, make it a space to walk and for kids to play in a natural setting.
- "Natural and creative ideas abound here. Thank you for an opportunity to comment as we were unable to attend your open houses.
- Sievers
- Spring Valley Lane"
- Would love to have more walking/biking paths throughout the community. Some of the few paths we have around this community suddenly come to a dead end or don't connect up with other path systems.



Springbank Hill Community Park

Stakeholder Report Back: What we Heard

January 2017

I LOVE that the city is trying to keep natural parks and trees cared for - we all need nature around us to thrive and be happy.

- Please ensure no firepits are placed in this park. It is close to a school, residents homes, and will have a playground in it. Keep a healthy atmosphere - PLEASE - no smoke!
- would love a legible plan sent to yakoda@gmail.com
- "Some great thought has gone into connecting this area to existing paths. However, I would prefer it was left as is.
- If you won't just leave it as is, then please leave it as natural as possible for the deer and other wildlife. Thanks."
- looking forward to the park.
- On these pages, there is no overview map showing the proposed park in relation to 69th and 77th St.. This would be helpful to show how the park fits in with the rest of the community.
- I think it's great that you're giving us a park and preserving the nature! Full steam ahead, these are all great ideas. Just make sure to install enough garbage bins for the parents and dog owners!
- Is the deer family that has been living in that 'safe' area for the last 8+ years (I've only been in Calgary 8 so don't know about before that) being moved out? Or have they been already relocated? I've seen up to 12 in the family group during the last years.
- A splash park or water park. Please!!!!!!
- Leave some spaces natural for adults. Sometimes people just want to go for a nice quiet walk and enjoy the natural beauty.