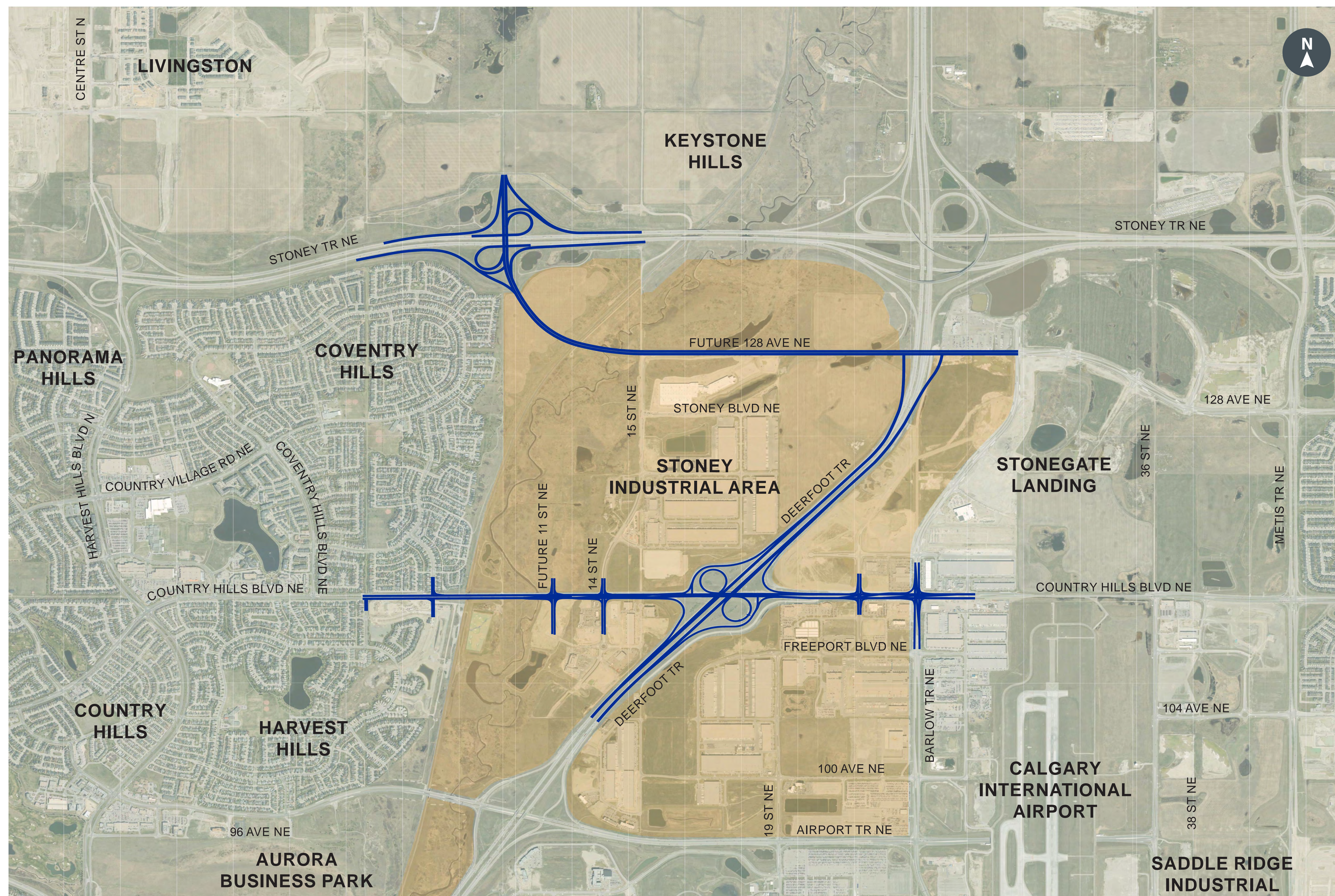


Project background information

This booklet will provide you with background information related to these projects. For ongoing project updates, information regarding future engagement events, or to sign up for email updates, visit calgary.ca/CountryHillsWidening or calgary.ca/128AveNE. The online survey for this first phase of engagement is open until **December 4, 2019**.



128 Avenue N.E. Functional Planning Study

Country Hills Boulevard N.E. Functional Planning Study

Project objectives

The City of Calgary is planning for the future widening of Country Hills Boulevard N.E. and the future 128 Avenue N.E. connection. The project objectives are as follows:

Country Hills Boulevard N.E.

Objectives

- Develop plans to widen Country Hills Boulevard N.E. between Deerfoot Trail and Coventry Boulevard N.E. from four to six lanes, including continuous multi-use pathways.
- Examine widening strategies for existing bridges over CP Rail, Nose Creek and Deerfoot Trail.
- Better accommodate and improve safety for people walking, cycling, taking transit and driving in the study area.

128 Avenue N.E.

Objectives

- Plan for the future 128 Avenue N.E. connection between Deerfoot Trail and Stoney Trail that will accommodate all modes of transportation.
- Review previous interchange plans at both Deerfoot Trail and Stoney Trail.
- Examine new bridge crossings over CP Rail and Nose Creek.
- Incorporate safety best practices considering those who travel through or commute along the study area.

Background

Land Use Planning

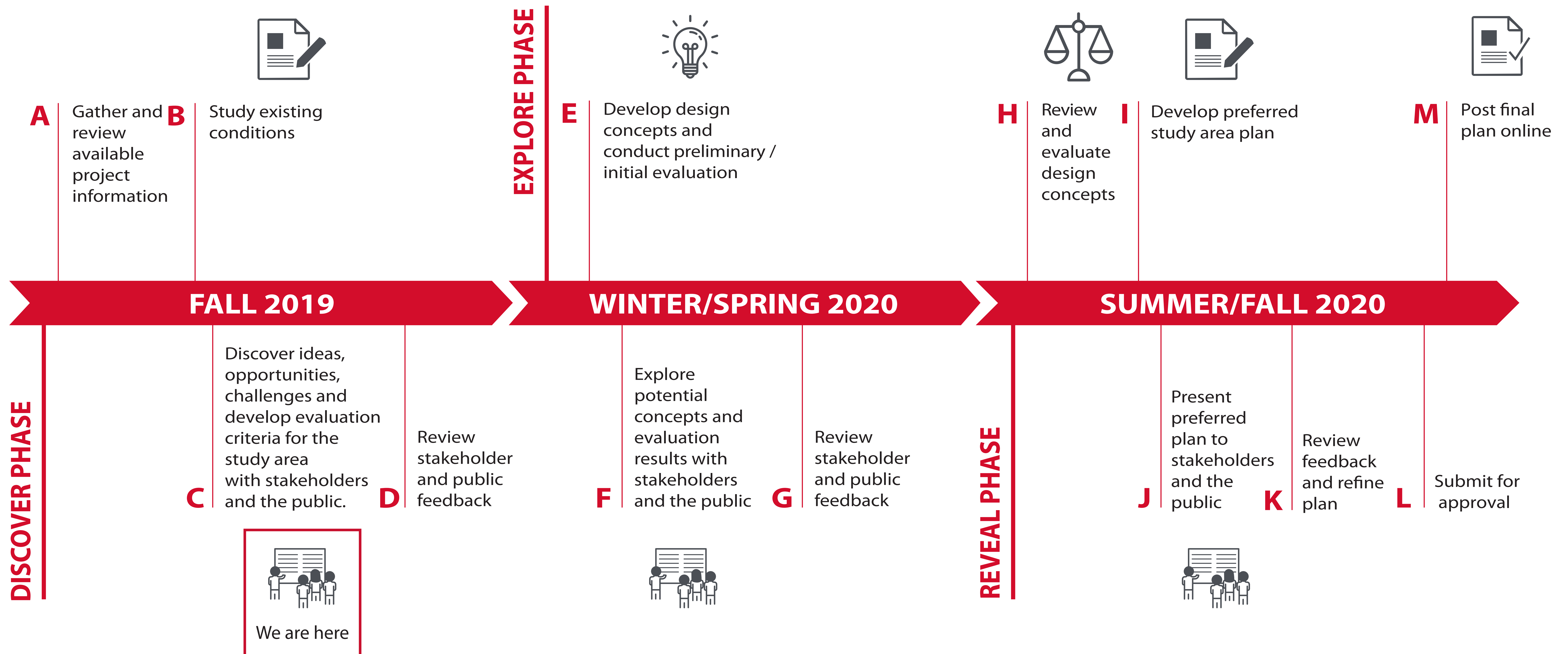
- 2004 Stoney Industrial Area Structure Plan** identifies approximately 932 hectares to be developed as industrial and commercial land (employing approximately 32,000 people).
- 2007 Northeast Industrial Area Structure Plan** identifies approximately 560 hectares to be developed as business, industrial and commercial land (employing approximately 1,600 people).
- 2015 Keystone Hills Area Structure Plan** identifies approximately 1,080 hectares to be developed as three communities, industrial and commercial land (employing approximately 18,000 people).

Transportation Planning

- 2000 Deerfoot Trail/Country Hills Boulevard Functional Planning Study** provides long-term and ultimate stage planning for the Deerfoot Trail/Country Hills Boulevard interchange, including updating Country Hills Boulevard N.E. to six-lanes and Deerfoot Trail widening.
- 2003 Stoney Trail Functional Planning Study** provides preliminary planning for the northern section of Stoney Trail, including the interchange at Stoney Trail/11 Street N.E.
- 2008 128 Avenue N.E. Functional Planning Study** generated a functional plan for the development of 128 Avenue N.E. between Deerfoot Trail and east of Metis Trail, including a proposed half diamond interchange on Deerfoot Trail (providing access to/from the south).
- 2009 Calgary Transportation Plan (CTP)** classifies **Country Hills Boulevard** as a six-lane Arterial Street. It is a key east-west connection to Deerfoot Trail and the Airport, and extends the full width of the city. The CTP classifies **128 Avenue N.E.** as an Industrial Arterial Road and a key east-west connection between Stoney Trail and Deerfoot Trail through the Stoney Industrial Area.
- 2015 Investing in Mobility: Transportation Infrastructure Investment Plan (TIIP)** identifies the widening of Country Hills Blvd N.E. as a key infrastructure requirement for the adjacent industrial growth. No funding is currently allocated to this project.



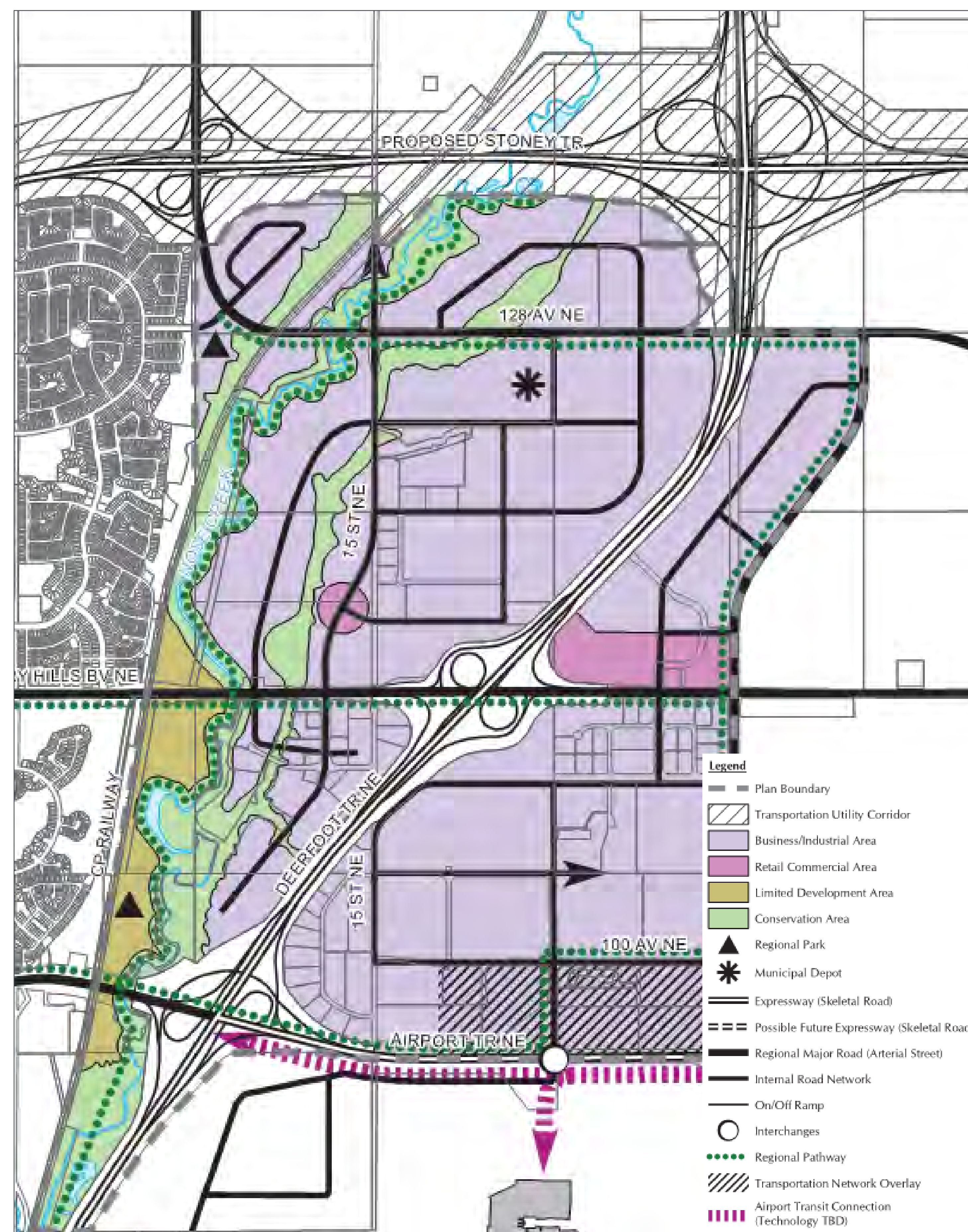
Study process



Stoney Industrial Area Structure Plan

Approved: 2004 | Amended: 2014

Land Use Concept



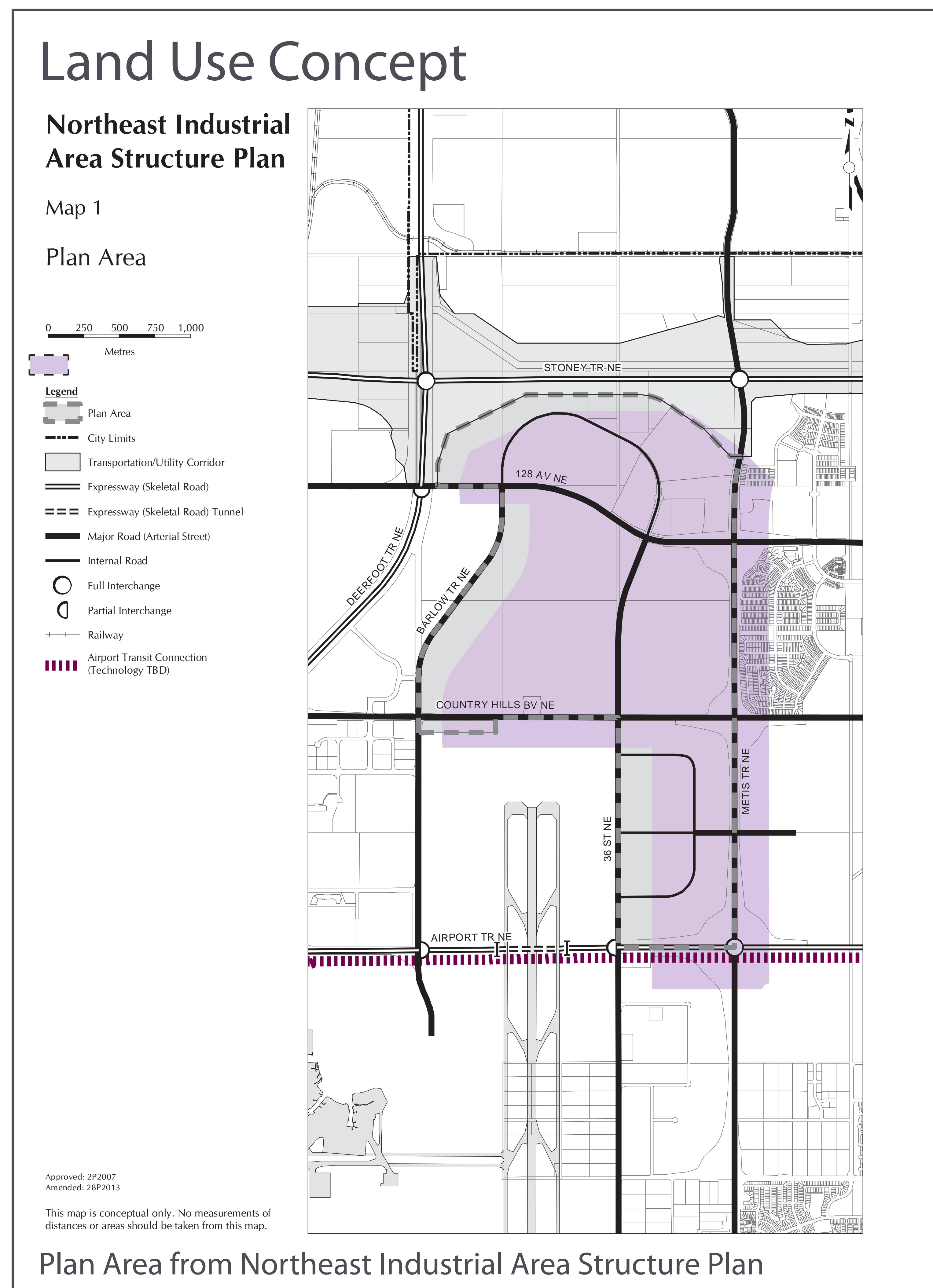
Land Use Concept from Stoney Industrial Area Structure Plan

Highlights:

- Country Hills Boulevard and 128 Avenue N.E. will support completion of the commercial and industrial growth.
- Existing and planned commercial and industrial growth in the Stoney Industrial ASP area will support approximately 32,000 jobs.
- Widening of Country Hills Boulevard N.E. to six lanes will provide increased capacity for accessing the Airport and Deerfoot Trail.
- 128 Avenue N.E. will be an important east-west connection between Stoney Trail and Deerfoot Trail through the Stoney Industrial ASP area.
- Direct and convenient pedestrian circulation within the ASP area will be supported by regional and local trails, pathways, sidewalks, and other features.

Northeast Industrial Area Structure Plan

Approved: 2007 | Amended: 2013

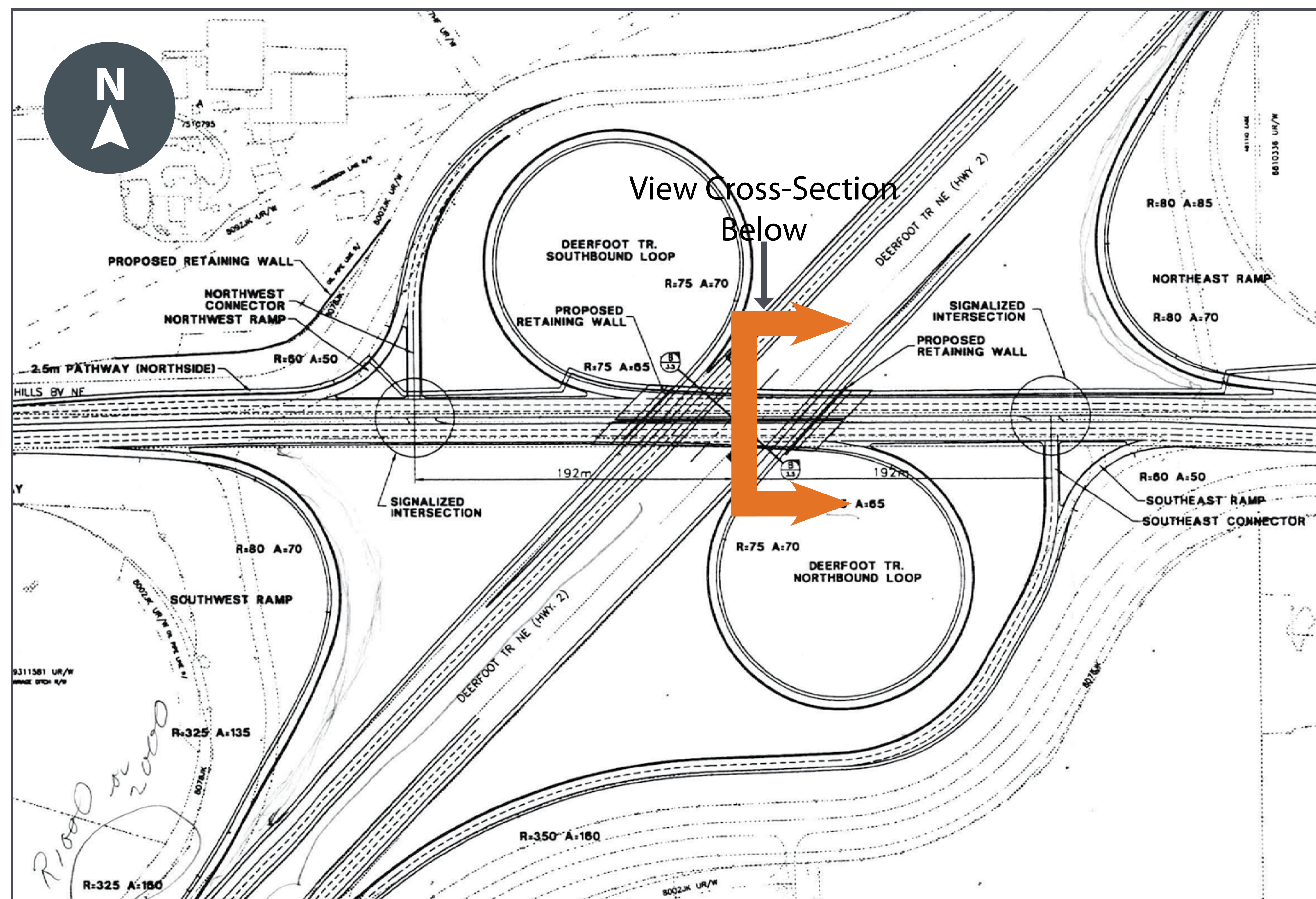


Highlights:

- The Northeast Industrial ASP plans for the development of approximately 560 hectares of land, supporting business/ industrial/commercial employment of about 1,600 people.
- 128 Avenue N.E., with connections to Deerfoot Trail and east of Metis Trail, will serve as an important transportation network link for the northern portion of the overall ASP area.
- The ASP notes that “construction of a right-in access northbound from Deerfoot Trail N.E. to 128 Avenue N.E. may occur in advance of the construction of the future half diamond interchange...” Note: The current study will consider other medium-term staging opportunities for this interchange.
- LRT service along 128 Avenue N.E. is anticipated in the east half of the ASP area, but will not cross Deerfoot Trail.

Deerfoot Trail/Country Hills Boulevard Functional Planning Study

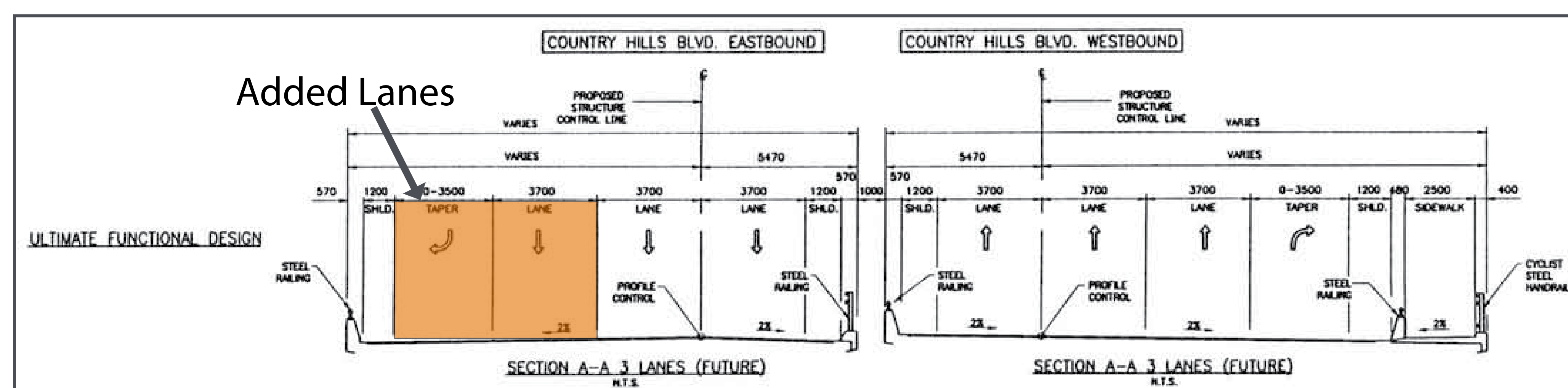
Completed: 2000



*Ultimate Plan from 2000 Deerfoot Trail/Country Hills Blvd. Functional Planning Study

Recommendations:

- Upgrade Country Hills Boulevard N.E. to a six-lane divided arterial road west of the Deerfoot Trail interchange.*
- Upgrade the Deerfoot Trail south bridge interchange from an eastbound two-lane road to an eastbound three-lane road, including a ramp to access northbound Deerfoot Trail**.
- Additional northbound and southbound lanes added to Deerfoot Trail.



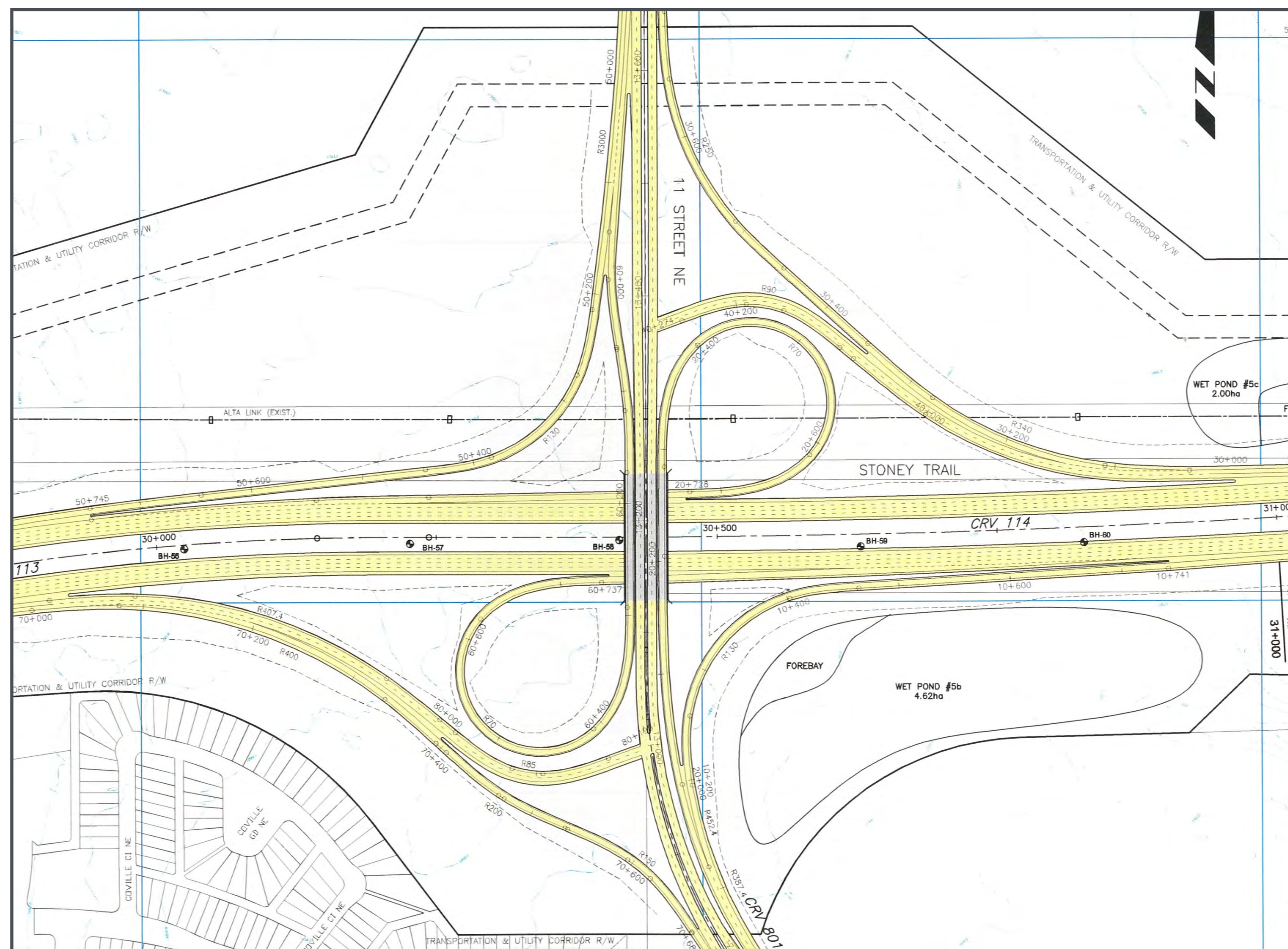
**Ultimate Cross Section from 2000 Deerfoot Trail/Country Hills Blvd. Functional Planning Study

Stoney Trail Functional Planning Study

Completed: 2003

Highlights:

- This study (by Alberta Transportation) provides the preliminary planning for the northern section of the Stoney Trail Ring Road, including the recommended interchange at 11 Street/128 Avenue N.E.*
- The study considered populations of 1.0 million and 1.5 million people in Calgary.
- Full and partial access staging plans were developed for the 11 Street N.E. interchange. Note: the current study will review staging options for this interchange.
- In 2007, pre-grading for the long-term interchange plan was completed.**



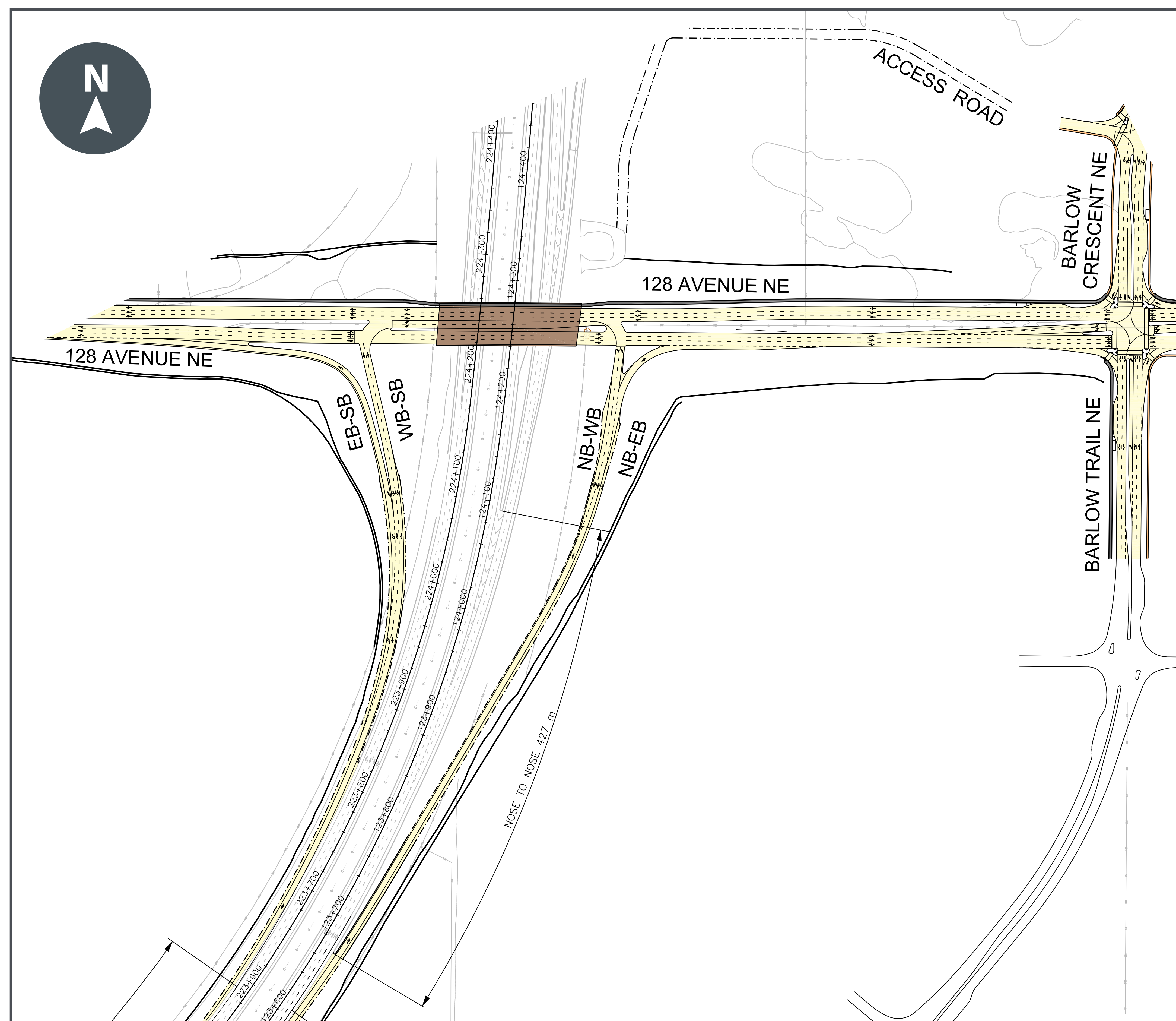
* Stoney Trail at 11 St. N.E. Recommended Ultimate Roadway from Stoney Trail Functional Planning Study



** From City Aerial Map

128 Avenue N.E. Functional Planning Study

Completed: 2008



Interchange Plan from the 2008 128 Avenue N.E. Functional Planning Study

Highlights:

- This study (by an area developer) includes functional plans for 128 Avenue N.E. between Deerfoot Trail and Metis Trail for a 50 to 75-year planning horizon.
- Initial construction was completed for 128 Avenue N.E. from Barlow Trail to Metis Trail.
- Construction of the proposed half diamond interchange (to/from the south).

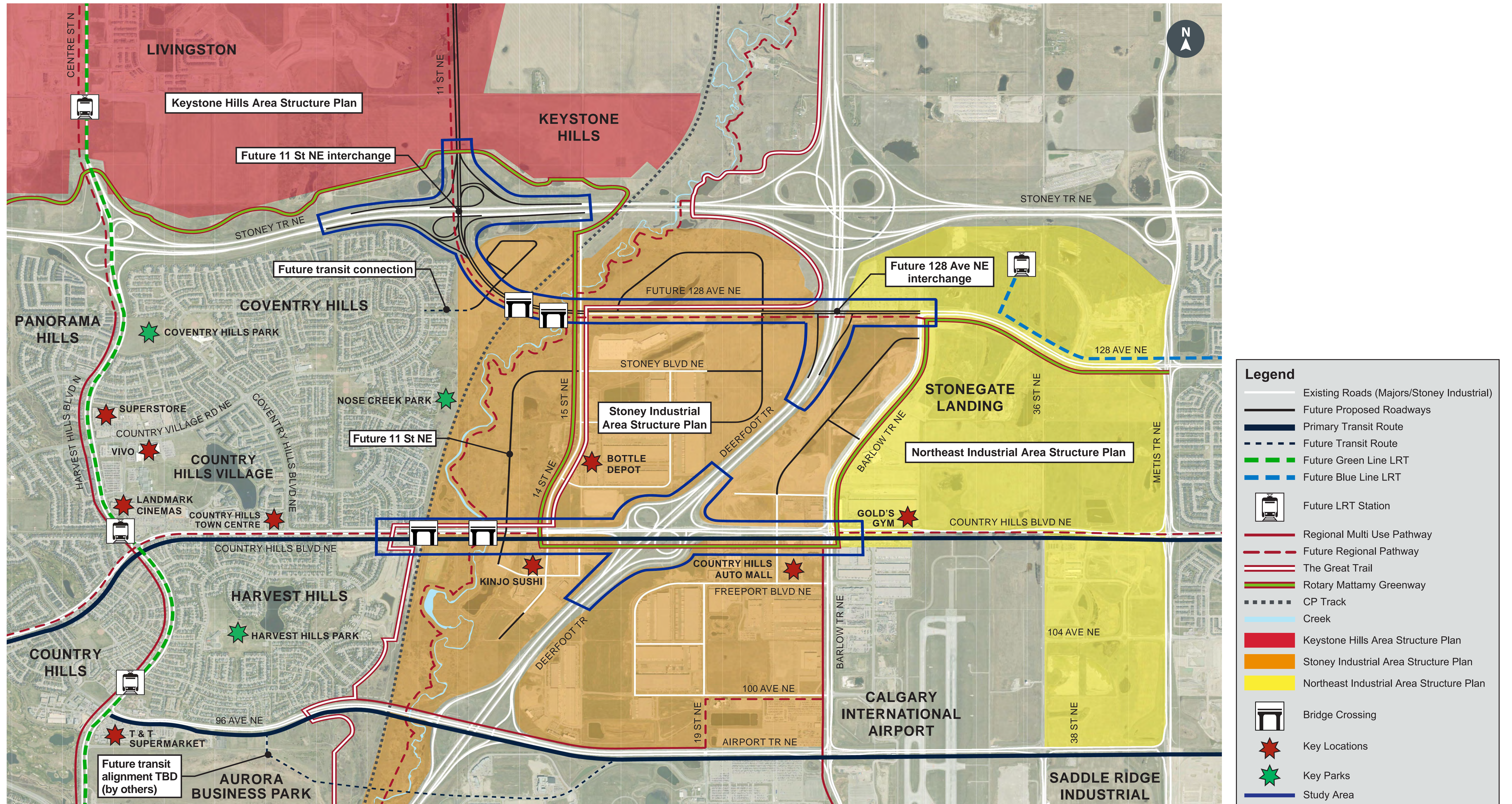


Road characteristics

	Characteristic	Existing	Future*
Country Hills Boulevard N.E.	Daily traffic	18,000 to 33,000 vehicles/day	20,000 to 35,000 vehicles/day
	Speed	70 km/h	60 km/h
	Number of travel lanes	2-3 lanes/direction	3 lanes/direction
	Sidewalk	Partially built on both sides	To be determined
	Pathway	Partially built on both sides	Primary bike route
	Transit	1 transit route	Primary transit network
	Truck route	Truck route and high-load corridor	Main goods movement corridor east of Deerfoot Trail
	CP Rail crossing	4 travel lanes	6 travel lanes
	Nose Creek crossing	4 travel lanes	6 travel lanes
	Deerfoot Trail crossing	5 travel lanes	6 travel lanes
128 Avenue N.E.	Daily traffic	Negligible within study area	10,000 to 30,000+ vehicles/day
	Speed	50 km/h	60 km/h
	Number of travel lanes	4 travel lanes (east of Barlow Trail) 2 travel lanes (15 Street N.E. to west of Deerfoot Trail)	4-6 travel lanes
	Sidewalk	South side (east of Barlow Trail)	To be determined
	Pathway	North side (east of Barlow Trail) South side (15 Street N.E. to west of Deerfoot Trail)	
	Transit	New Stoney Transit Facility (bus storage/maintenance) recently constructed	Local bus service Transit-only connection planned between 128 Avenue N.E. and the Coventry Hills community
	Truck route	No	To be determined
	CP Rail crossing	No	Yes
	Nose Creek crossing	No	Yes
	Deerfoot Trail crossing	No	Yes - half interchange to/from the south
	Stoney Trail crossing	No	Yes - full interchange

*As per previous planning documents and to be confirmed during this study

Project considerations



Next steps



1. Discover Phase: Document and Assess Existing Conditions
 - The online survey is open until **December 4 , 2019** at calgary.ca/CountryHillsWidening or calgary.ca/128AveNE
2. Explore Phase: Development and Analyze Concepts (January - May 2020)
3. Reveal Phase: Presentation of Recommended Plan (June - December 2020)



How will public feedback be used?

The City will prepare a What We Heard report summarizing all feedback following this and future public engagement sessions. Your input will help inform the design concept and the preferred plan for the Country Hills Boulevard N.E. and 128 Avenue N.E. study areas.

For ongoing project updates, information regarding future engagement events, or to sign up for email updates, visit calgary.ca/CountryHillsWidening or calgary.ca/128AveNE.

Thank you for your interest.

Please take a moment to fill out a comment form or provide your feedback online. Your feedback will help us improve our future engagement events.